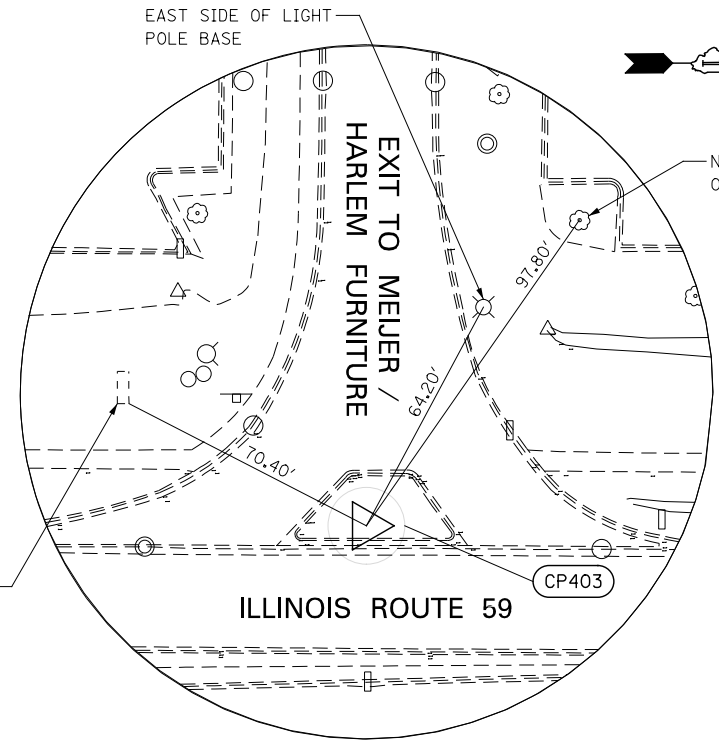
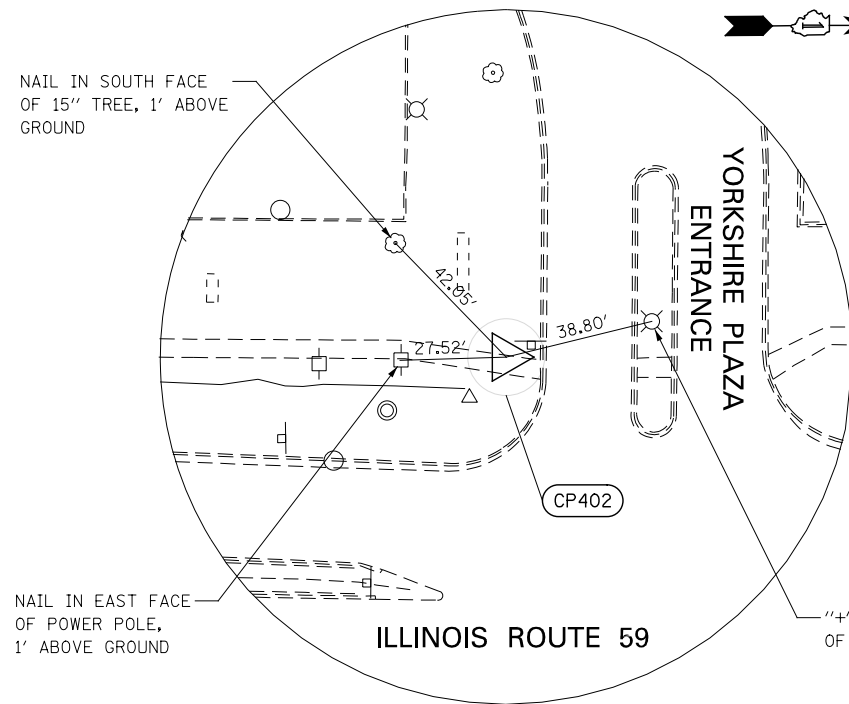


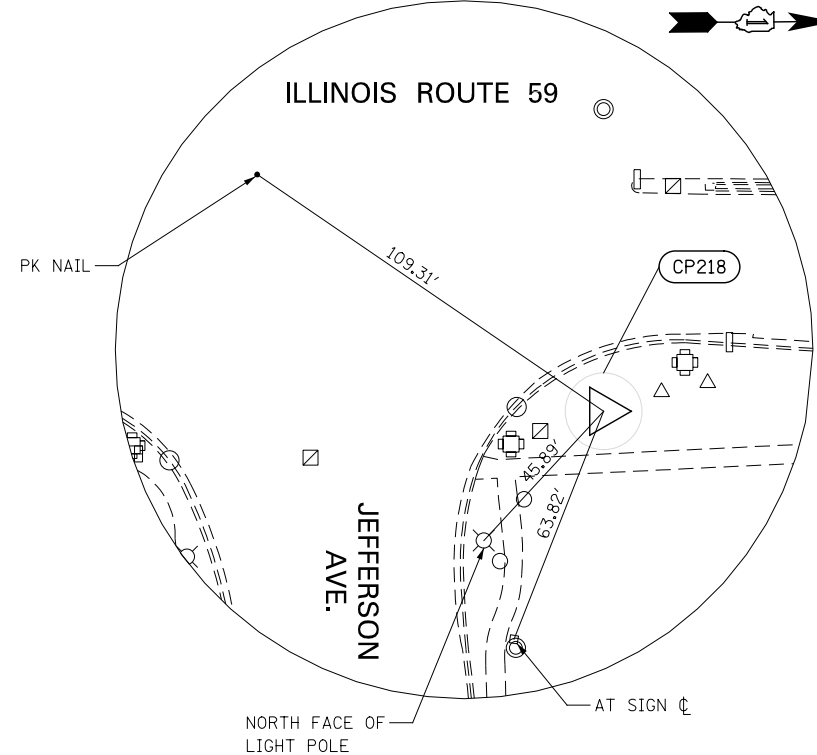
CONTROL POINT 401
 STA. 3906+54.31 79.67' RT
 REBAR W/CAP 4' EAST OF MID-POINT OF BACK OF CURB IN THE SOUTH EAST QUADRANT OF ROUTE 59 AND AURORA AVE., 0.5' SOUTH OF EXISTING HANDHOLE.
 N 856050.0607
 E 19141.3010
 ELEV. = 693.09



CONTROL POINT 403
 STA. 3921+44.45 36.85' LT
 CROSS (+) 3' WEST OF WEST BACK OF CURB OF PORK CHOP ISLAND AT SOUTH EASTERN EXIT OF MEIJER FOODS/HARLEM FURNITURE TO ROUTE 59.
 N 857541.4681
 E 19043.1390
 ELEV. = 705.51



CONTROL POINT 402
 STA. 3915+52.85 60.97' LT
 CROSS (+) CUT 0.5' EAST OF WEST BACK OF SIDEWALL EDGE, 9' SOUTH OF BACK OF CURB, AT SOUTH ENTRANCE TO YORKSHIRE PLAZA AT ROUTE 59.
 N 856950.3341
 E 19009.4040
 ELEV. = 701.37



CONTROL POINT 218
 STA. 3936+64.73 71.43' RT
 NAPERVILLE GPS MONUMENT AT NORTHEAST CORNER OF IL ROUTE 59 AND JEFFERSON AVE., 8' WEST OF EDGE OF SIDEWALK, 10' EAST OF MID-POINT OF BACK OF CURB.
 N 859060.2211
 E 19168.4500
 ELEV. = 710.10

DESIGNED	PJO	REVISED	-
DRAWN	KES	REVISED	-
CHECKED	JCM	REVISED	-
DATE	12/14/2012	REVISED	-

**STATE OF ILLINOIS
 DEPARTMENT OF TRANSPORTATION**

ALIGNMENT, TIES, AND BENCHMARKS

SCALE: AS SHOWN | SHEET NO. 6 OF 8 SHEETS | STA. TO STA.

F.A.P. RTE.	SECTION	COUNTY	TOTAL SHEETS	SHEET NO.
338	(112 & 113) WRS-7	DUPAGE	1156	92
CONTRACT NO. 60R30				
ILLINOIS FED. AID PROJECT				