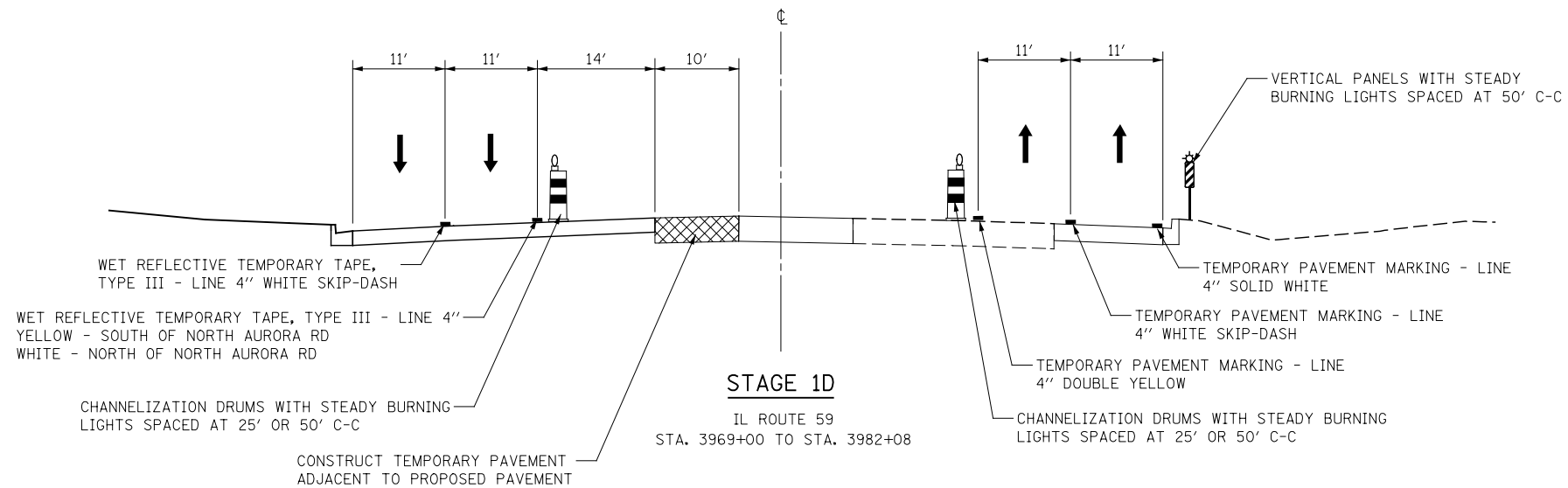


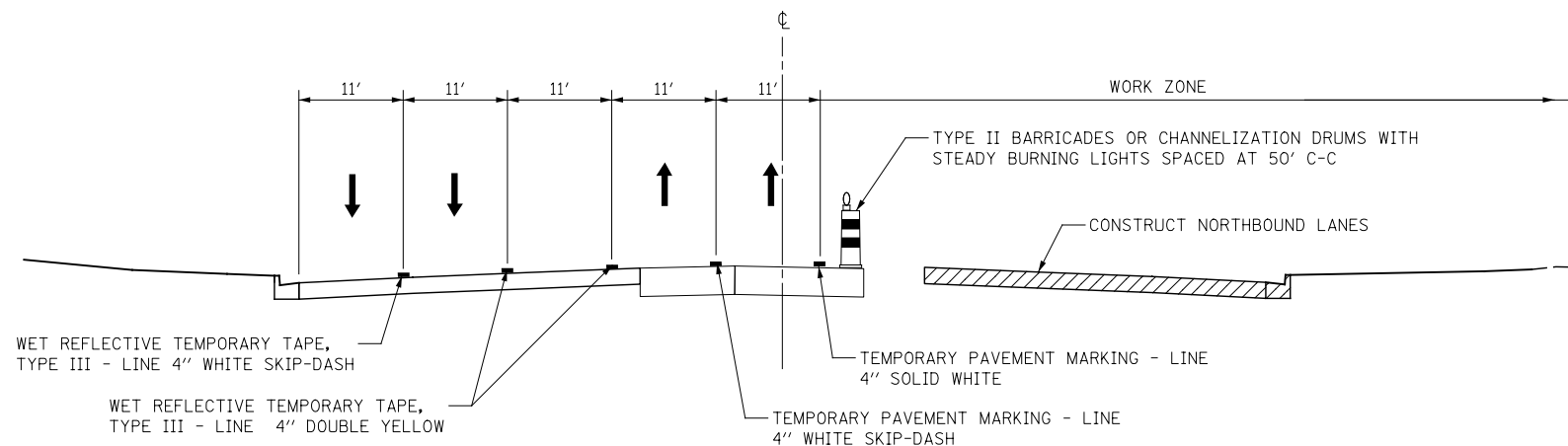
STAGE 1, 1A, 1B, 1C

IL ROUTE 59
STA. 3969+00 TO STA. 3982+08



STAGE 1D

IL ROUTE 59
STA. 3969+00 TO STA. 3982+08



STAGE 2

IL ROUTE 59
STA. 3969+00 TO STA. 3982+08

DESIGNED	PJO	REVISED	-
DRAWN	KES	REVISED	-
CHECKED	JCM	REVISED	-
DATE	12/14/2012	REVISED	-

**STATE OF ILLINOIS
DEPARTMENT OF TRANSPORTATION**

**IL ROUTE 59 MOT TYPICAL SECTIONS
BNSF RAILROAD TO NORTH AURORA ROAD**

SCALE: AS SHOWN | SHEET NO. 14 OF 195 SHEETS | STA. 3969+00 TO STA. 3982+08

F.A.P. RTE.	SECTION	COUNTY	TOTAL SHEETS	SHEET NO.
338	(112 & 113) WRS-7	DUPAGE	1156	108
CONTRACT NO. 60R30				
ILLINOIS FED. AID PROJECT				