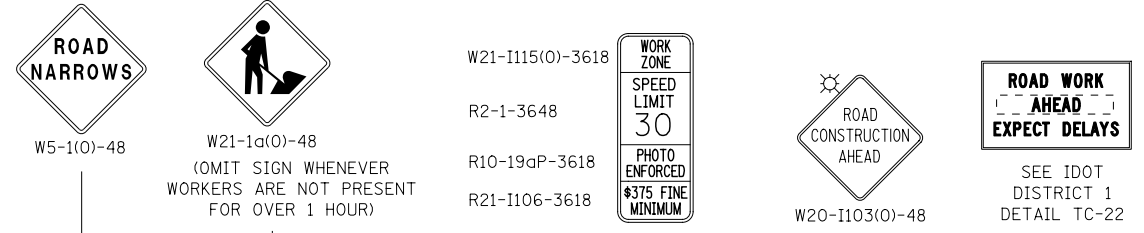
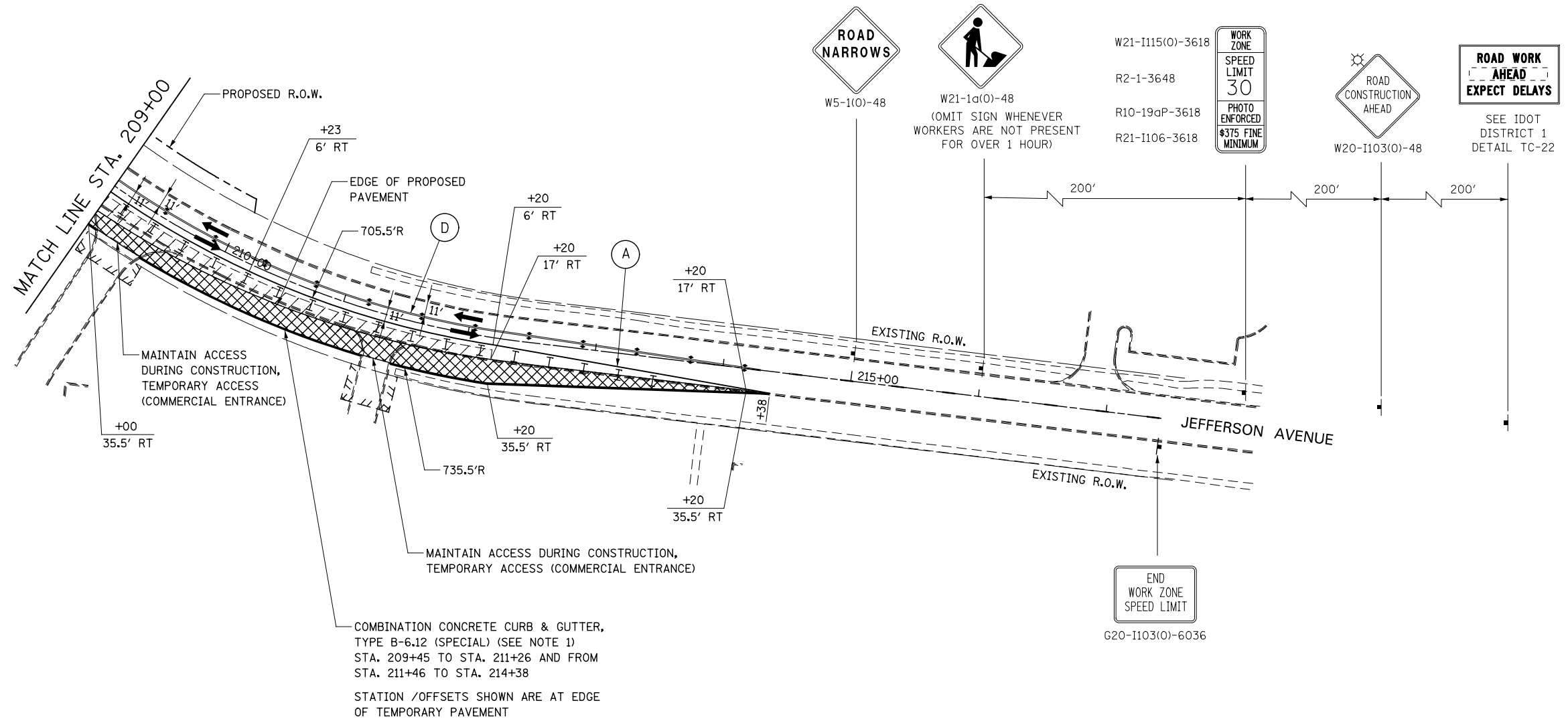


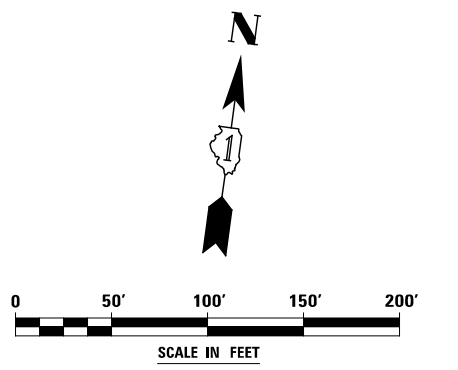
ADVANCE SIGNING FOR JEFFERSON AVENUE

(SPACING MAY VARY DUE TO FIELD CONDITIONS)



NOTES

1. AT THE LIMITS OF THE CURB AND GUTTER, TRANSITIONS SHALL BE INSTALLED IN ACCORDANCE WITH THE MAINTENANCE OF TRAFFIC DETAILS AND AS DIRECTED BY THE ENGINEER



DESIGNED	PJO	REVISED	-	STATE OF ILLINOIS DEPARTMENT OF TRANSPORTATION	MAINTENANCE OF TRAFFIC – STAGE 1 JEFFERSON AVENUE	F.A.P. RTE.	SECTION	COUNTY	TOTAL SHEETS	SHEET NO.
DRAWN	KES	REVISED	-			338	(112 & 113) WRS-7	DUPAGE	1156	142
CHECKED	JCM	REVISED	-			CONTRACT NO. 60R30				
DATE	12/14/2012	REVISED	-			ILLINOIS FED. AID PROJECT				