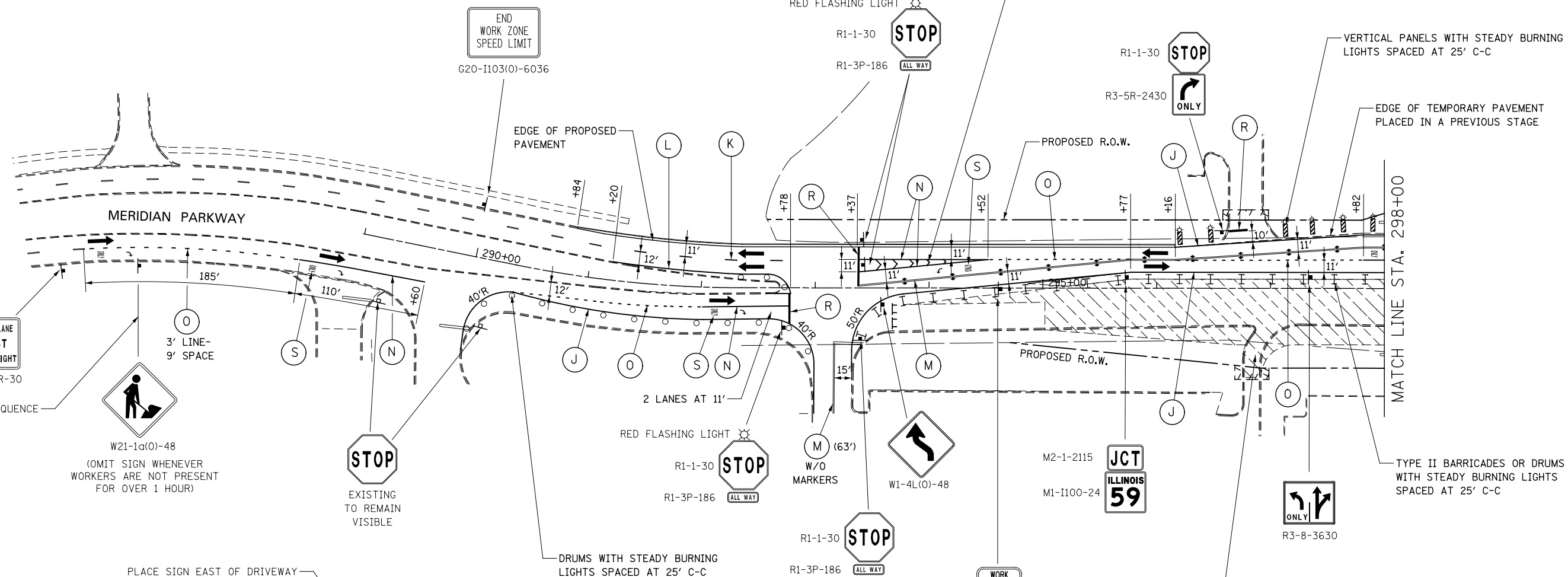


WET REFLECTIVE TEMPORARY TAPE, TYPE III, 12", SOLID WHITE CHEVRONS AT 5 EQUAL SPACES



SEE ADVANCE SIGNING SEQUENCE

RIGHT LANE MUST TURN RIGHT
R7-7R-30



W21-1a(0)-48
(OMIT SIGN WHENEVER WORKERS ARE NOT PRESENT FOR OVER 1 HOUR)



EXISTING TO REMAIN VISIBLE



RED FLASHING LIGHT
R1-1-30
R1-3P-186

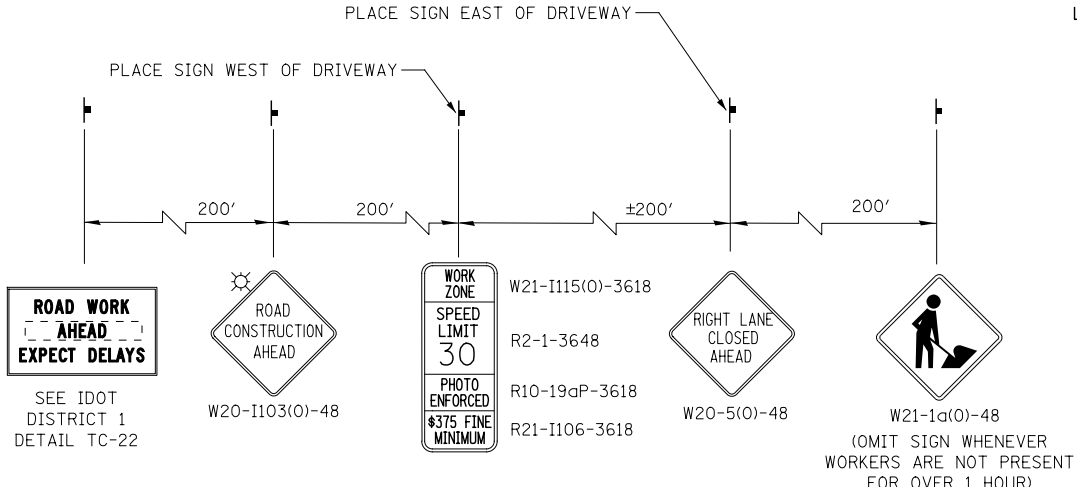


RED FLASHING LIGHT
R1-1-30
R1-3P-186

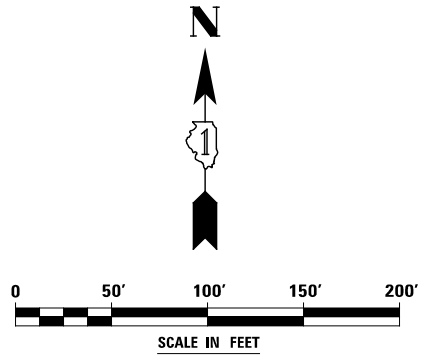
WORK ZONE
SPEED LIMIT 30
PHOTO ENFORCED
\$375 FINE MINIMUM

W21-I115(0)-3618
R2-1-3648
R10-19aP-3618
R21-I106-3618

MAINTAIN ACCESS DURING CONSTRUCTION, TEMPORARY ACCESS (COMMERCIAL ENTRANCE)



ADVANCE SIGNING FOR MERIDIAN PARKWAY
(SPACING MAY VARY DUE TO FIELD CONDITIONS)



DESIGNED	PJO	REVISED	-
DRAWN	KES	REVISED	-
CHECKED	JCM	REVISED	-
DATE	12/14/2012	REVISED	-

STATE OF ILLINOIS
DEPARTMENT OF TRANSPORTATION

MAINTENANCE OF TRAFFIC - STAGE 1A
MERIDIAN PARKWAY
SCALE: AS SHOWN SHEET NO. 64 OF 195 SHEETS STA. 288+00 TO STA. 298+00

F.A.P. RTE.	SECTION	COUNTY	TOTAL SHEETS	SHEET NO.
338	(112 & 113) WRS-7	DUPAGE	1156	158
CONTRACT NO. 60R30				
ILLINOIS FED. AID PROJECT				