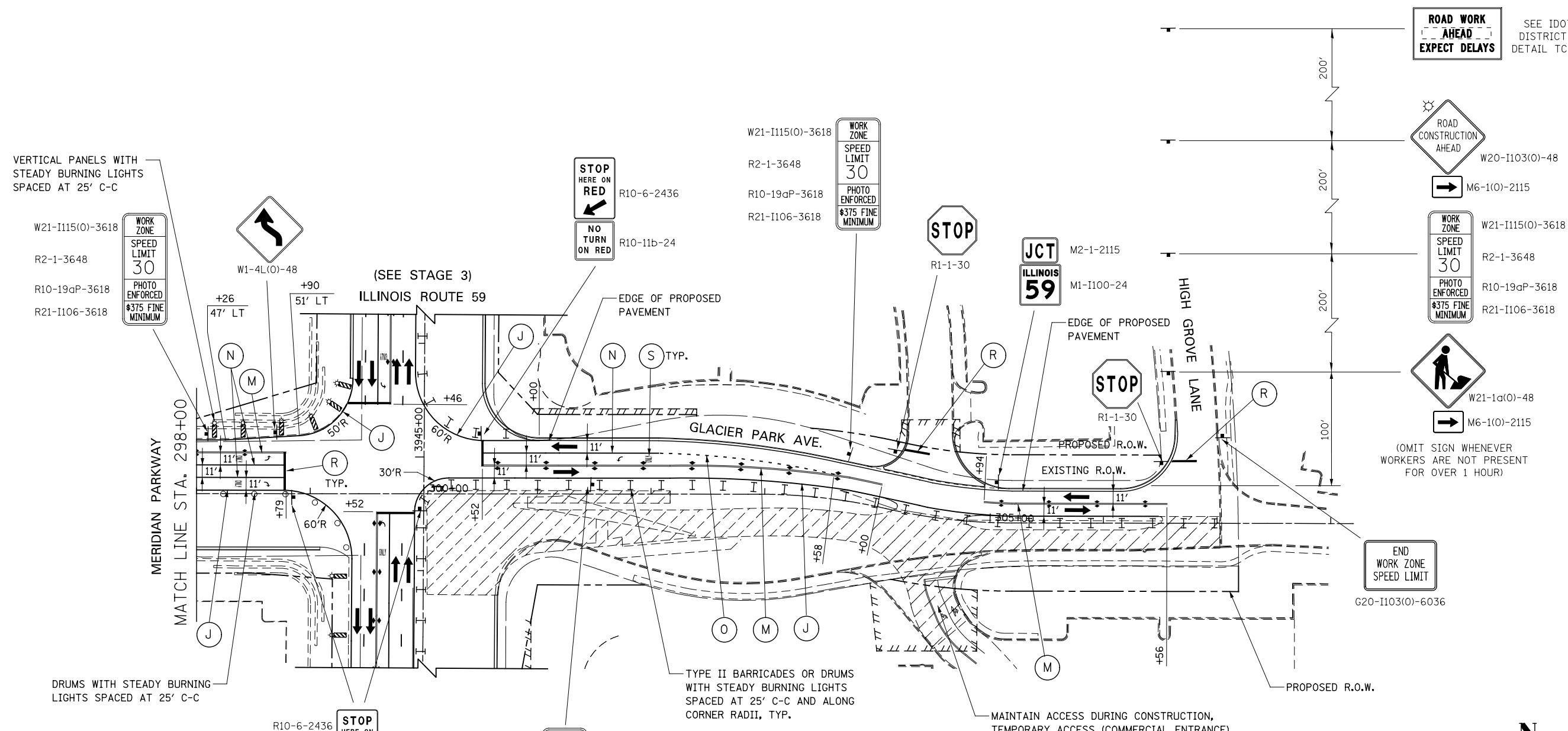


ADVANCE SIGNING FOR GLACIER PARK AVENUE / HIGH GROVE LANE
(SPACING MAY VARY DUE TO FIELD CONDITIONS)



VERTICAL PANELS WITH STEADY BURNING LIGHTS SPACED AT 25' C-C

W21-I115(O)-3618
R2-1-3648
R10-19aP-3618
R21-I106-3618

WORK ZONE
SPEED LIMIT
30
PHOTO ENFORCED
\$375 FINE
MINIMUM

MATCH LINE STA. 298+00

DRUMS WITH STEADY BURNING LIGHTS SPACED AT 25' C-C

R10-6-2436
R10-11b-24

W21-I115(O)-3618
R2-1-3648
R10-19aP-3618
R21-I106-3618

WORK ZONE
SPEED LIMIT
30
PHOTO ENFORCED
\$375 FINE
MINIMUM

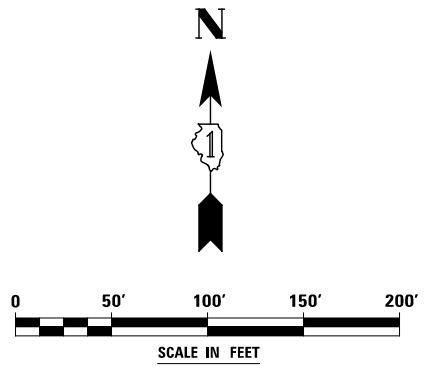
TYPE II BARRICADES OR DRUMS WITH STEADY BURNING LIGHTS SPACED AT 25' C-C AND ALONG CORNER RADII, TYP.

MAINTAIN ACCESS DURING CONSTRUCTION, TEMPORARY ACCESS (COMMERCIAL ENTRANCE)

(OMIT SIGN WHENEVER WORKERS ARE NOT PRESENT FOR OVER 1 HOUR)

SEE IDOT DISTRICT 1 DETAIL TC-22

END WORK ZONE SPEED LIMIT
G20-I103(O)-6036



DESIGNED	PJO	REVISED	-
DRAWN	KES	REVISED	-
CHECKED	JCM	REVISED	-
DATE	12/14/2012	REVISED	-

STATE OF ILLINOIS
DEPARTMENT OF TRANSPORTATION

MAINTENANCE OF TRAFFIC - STAGE 3A
GLACIER PARK AVENUE

SCALE: AS SHOWN SHEET NO. 144 OF 195 SHEETS STA. 298+00 TO STA. 308+00

F.A.P. RTE.	SECTION	COUNTY	TOTAL SHEETS	SHEET NO.
338	(112 & 113) WRS-7	DUPAGE	1156	238
CONTRACT NO. 60R30				
ILLINOIS FED. AID PROJECT				