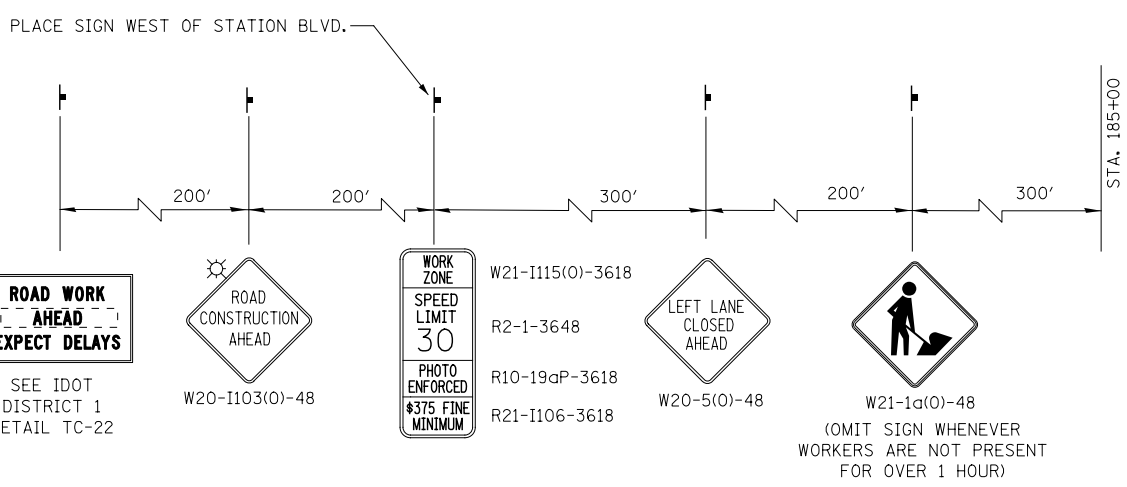
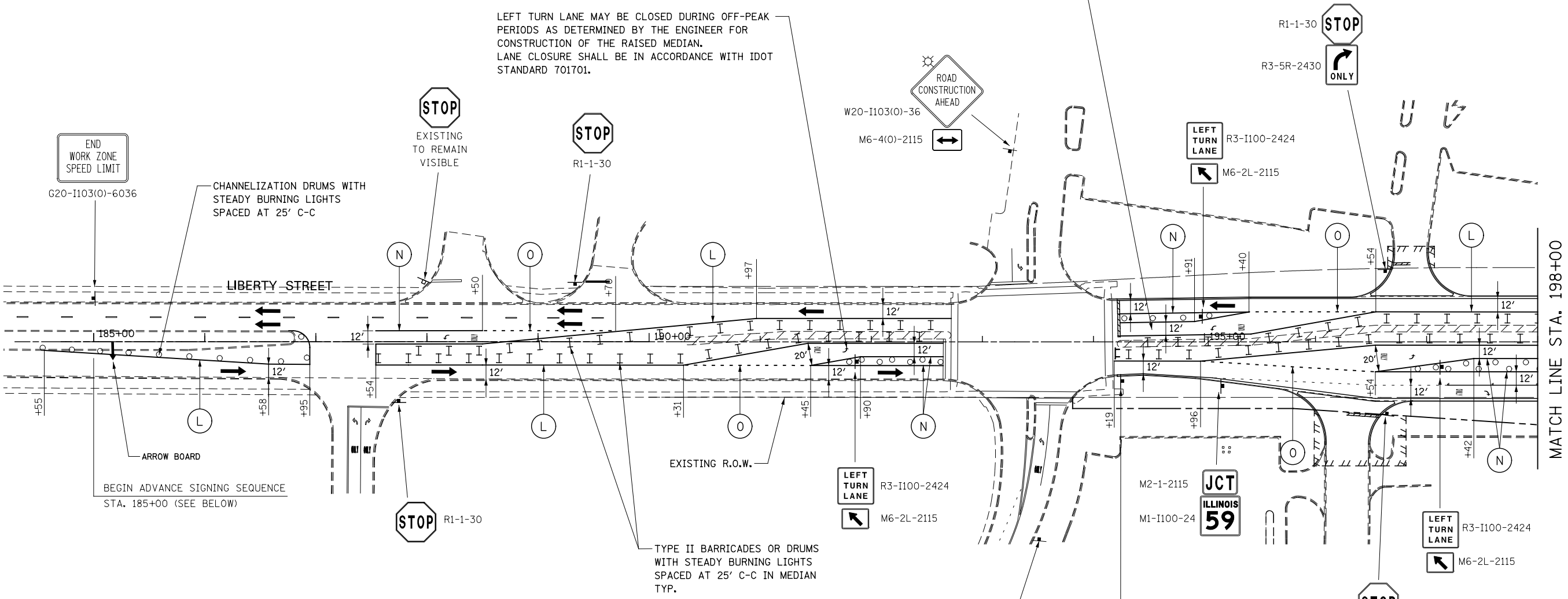
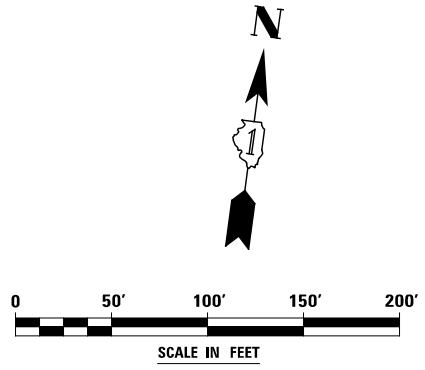


LEFT TURN LANE MAY BE CLOSED DURING OFF-PEAK PERIODS AS DETERMINED BY THE ENGINEER FOR CONSTRUCTION OF THE RAISED MEDIAN. LANE CLOSURE SHALL BE IN ACCORDANCE WITH IDOT STANDARD 701701.

LEFT TURN LANE MAY BE CLOSED DURING OFF-PEAK PERIODS AS DETERMINED BY THE ENGINEER FOR CONSTRUCTION OF THE RAISED MEDIAN. LANE CLOSURE SHALL BE IN ACCORDANCE WITH IDOT STANDARD 701701.



ADVANCE SIGNING FOR LIBERTY STREET
(SPACING MAY VARY DUE TO FIELD CONDITIONS)



DESIGNED	PJO	REVISED	-
DRAWN	KES	REVISED	-
CHECKED	JCM	REVISED	-
DATE	12/14/2012	REVISED	-

STATE OF ILLINOIS
DEPARTMENT OF TRANSPORTATION

MAINTENANCE OF TRAFFIC - STAGE 4
LIBERTY STREET

SCALE: AS SHOWN SHEET NO. 168 OF 195 SHEETS STA. 185+00 TO STA. 198+00

F.A.P. RTE.	SECTION	COUNTY	TOTAL SHEETS	SHEET NO.
338	(112 & 113) WRS-7	DUPAGE	1156	259
CONTRACT NO. 60R30				

ILLINOIS FED. AID PROJECT