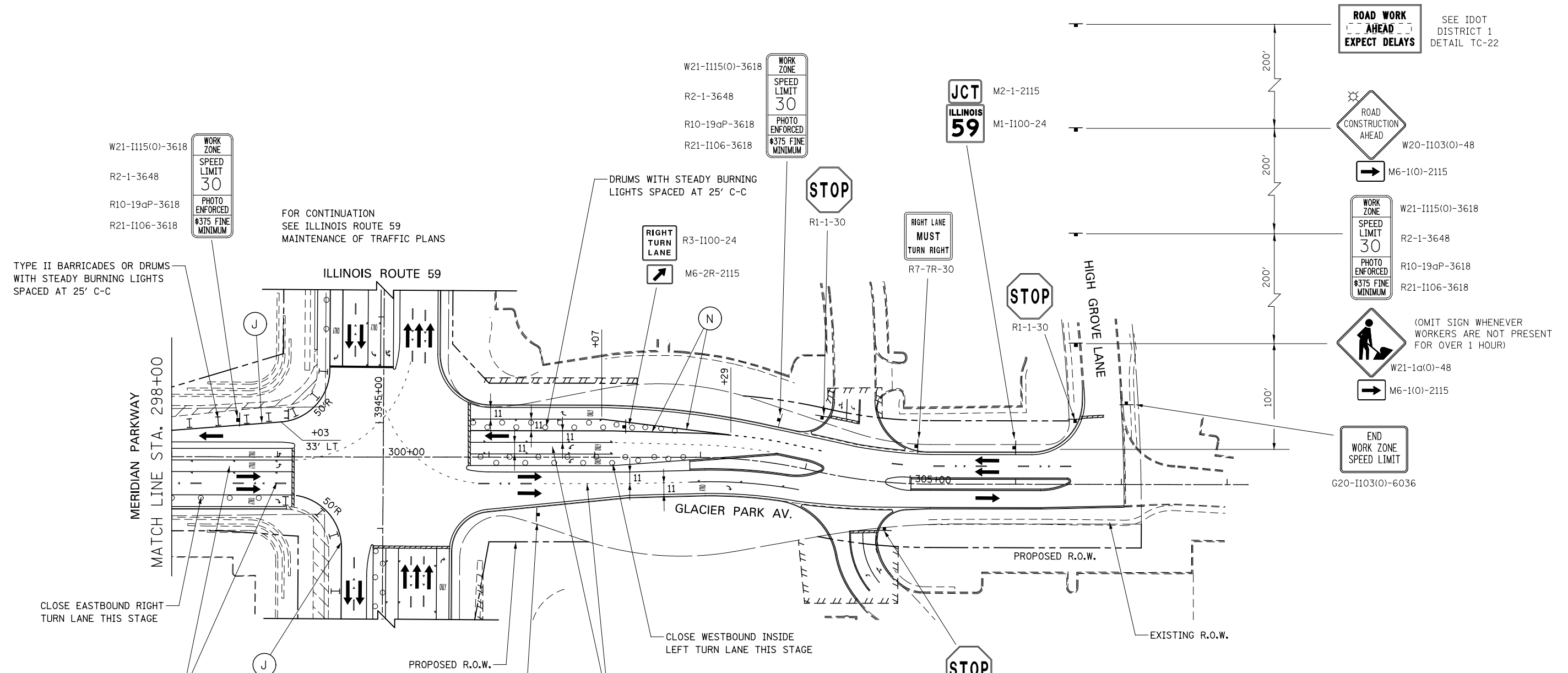


ADVANCE SIGNING FOR GLACIER PARK AVENUE / HIGH GROVE LANE
 (SPACING MAY VARY DUE TO FIELD CONDITIONS)



- ROAD WORK AHEAD EXPECT DELAYS SEE IDOT DISTRICT 1 DETAIL TC-22
- ROAD CONSTRUCTION AHEAD W20-I103(O)-48
- M6-1(O)-2115
- WORK ZONE SPEED LIMIT 30 PHOTO ENFORCED \$375 FINE MINIMUM W21-I115(O)-3618 R2-1-3648 R10-19aP-3618 R21-I106-3618
- (OMIT SIGN WHENEVER WORKERS ARE NOT PRESENT FOR OVER 1 HOUR) W21-1a(O)-48
- M6-1(O)-2115
- END WORK ZONE SPEED LIMIT G20-I103(O)-6036

W21-I115(O)-3618
 R2-1-3648
 R10-19aP-3618
 R21-I106-3618

W21-I115(O)-3618
 R2-1-3648
 R10-19aP-3618
 R21-I106-3618

W21-I115(O)-3618
 R2-1-3648
 R10-19aP-3618
 R21-I106-3618

TYPE II BARRICADES OR DRUMS WITH STEADY BURNING LIGHTS SPACED AT 25' C-C

FOR CONTINUATION SEE ILLINOIS ROUTE 59 MAINTENANCE OF TRAFFIC PLANS

DRUMS WITH STEADY BURNING LIGHTS SPACED AT 25' C-C

CLOSE EASTBOUND RIGHT TURN LANE THIS STAGE

CLOSE WESTBOUND INSIDE LEFT TURN LANE THIS STAGE

PERMANENT PAVEMENT MARKING UNLESS OTHERWISE INDICATED (SEE PAVEMENT MARKING PLANS)

PERMANENT PAVEMENT MARKING UNLESS OTHERWISE INDICATED (SEE PAVEMENT MARKING PLANS)

STATE OF ILLINOIS
 DEPARTMENT OF TRANSPORTATION

MAINTENANCE OF TRAFFIC - STAGE 4A
 GLACIER PARK AVENUE

F.A.P. RTE.	SECTION	COUNTY	TOTAL SHEETS	SHEET NO.
338	(112 & 113) WRS-7	DUPAGE	1156	283
CONTRACT NO. 60R30				
ILLINOIS FED. AID PROJECT				

SCALE: AS SHOWN SHEET NO. 191 OF 195 SHEETS STA.298+00 TO STA. 308+00

DESIGNED	PJO	REVISED	-
DRAWN	KES	REVISED	-
CHECKED	JCM	REVISED	-
DATE	12/14/2012	REVISED	-