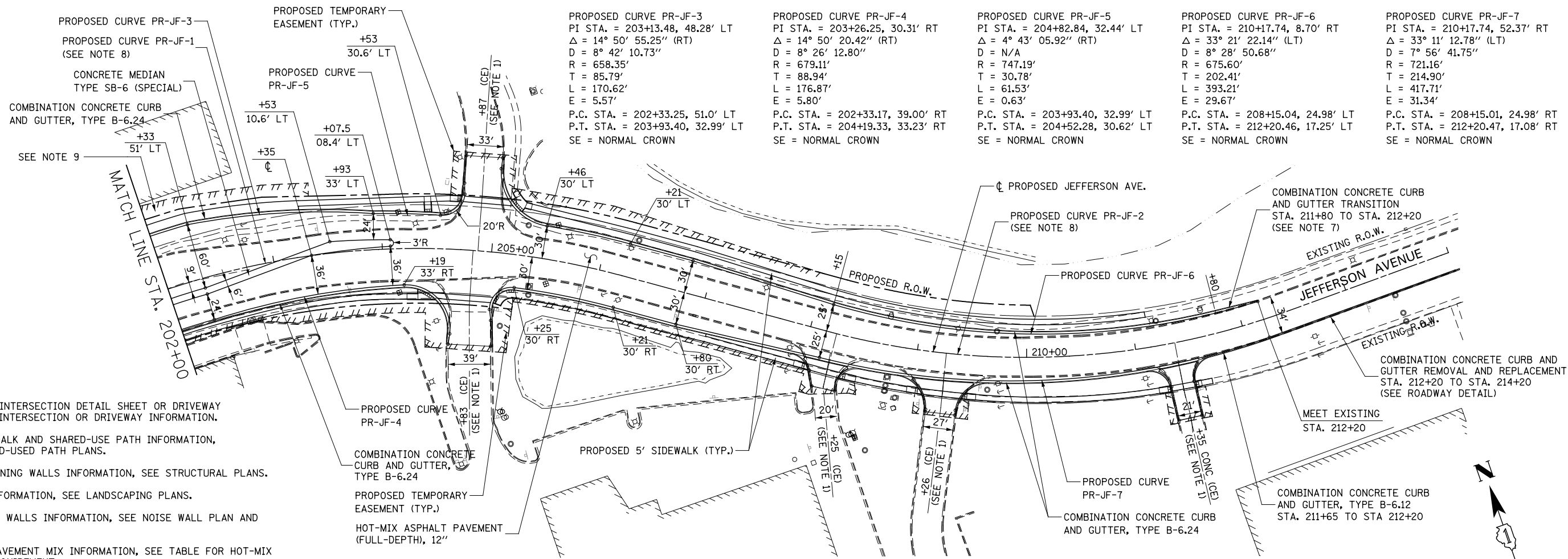


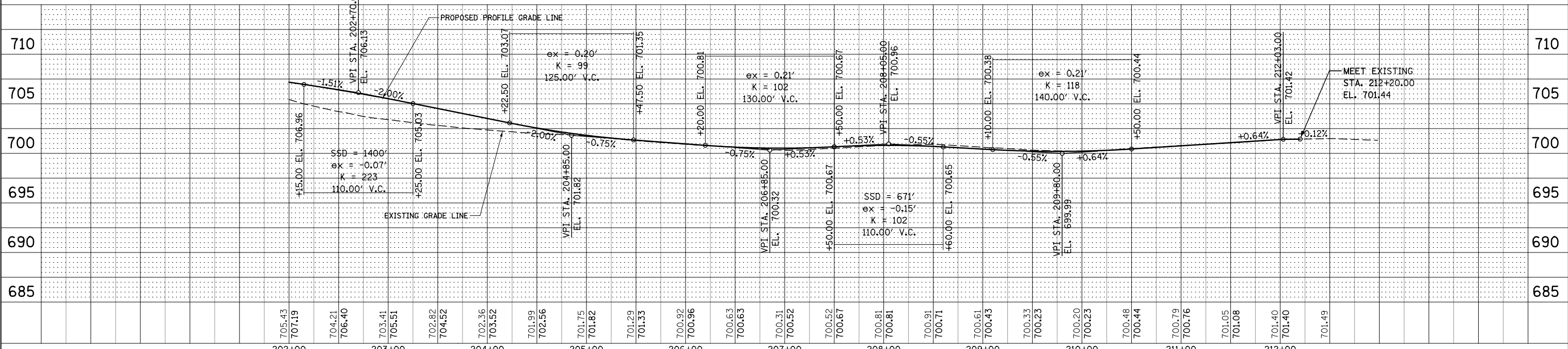
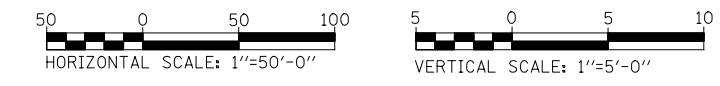
PLAN	SURVEYED	DATE
	PLOTTED	BY
	CHECKED	
	NO. _____	
	FILE NAME	

PROFILE	SURVEYED	DATE
	GRADES CHECKED	BY
	STRUCTURE NOTATIONS CHK'D	
	NO. _____	



**NOTES:**

- SEE CORRESPONDING INTERSECTION DETAIL SHEET OR DRIVEWAY DETAILS SHEET FOR INTERSECTION OR DRIVEWAY INFORMATION.
- FOR PROPOSED SIDEWALK AND SHARED-USE PATH INFORMATION, SEE SIDEWALK/SHARED-USED PATH PLANS.
- FOR PROPOSED RETAINING WALLS INFORMATION, SEE STRUCTURAL PLANS.
- FOR LANDSCAPING INFORMATION, SEE LANDSCAPING PLANS.
- FOR PROPOSED NOISE WALLS INFORMATION, SEE NOISE WALL PLAN AND PROFILE SHEETS.
- FOR HMA ASPHALT PAVEMENT MIX INFORMATION, SEE TABLE FOR HOT-MIX ASPHALT MIXTURE REQUIREMENT.
- COMBINATION CONCRETE CURB AND GUTTER TRANSITION FROM TYPE B-6.24 TO B-6.12 SHALL BE PAID FOR AS "COMBINATION CONCRETE CURB AND GUTTER, TYPE B-6.24".
- FOR PROPOSED JEFFERSON AVENUE CENTERLINE INFORMATION SEE THE ALIGNMENT, BENCHMARKS, AND TIES SHEETS.
- THE CONTRACTOR SHALL EXERCISE UTMOST CARE TO AVOID ANY IMPACTS, THROUGH THE USE OF THE TEMPORARY EASEMENT AT THIS LOCATION, TO THE EXISTING/PROPOSED PRIVATE SIDEWALK LOCATED ADJACENT AND ALONG THE PERIMETER OF THE EXISTING BUILDING.



DESIGNED	PJO	REVISED	-
DRAWN	KES	REVISED	-
CHECKED	JCM	REVISED	-
DATE	12/14/2012	REVISED	-

**STATE OF ILLINOIS  
DEPARTMENT OF TRANSPORTATION**

**PLAN AND PROFILE - JEFFERSON AVENUE**

SCALE: AS SHOWN SHEET NO. 11 OF 16 SHEETS STA. 202+00 TO STA. 212+20

F.A.P. RTE.	SECTION	COUNTY	TOTAL SHEETS	SHEET NO.
338	(112 & 113) WRS-7	DUPAGE	1156	311
CONTRACT NO. 60R30				
ILLINOIS FED. AID PROJECT				