

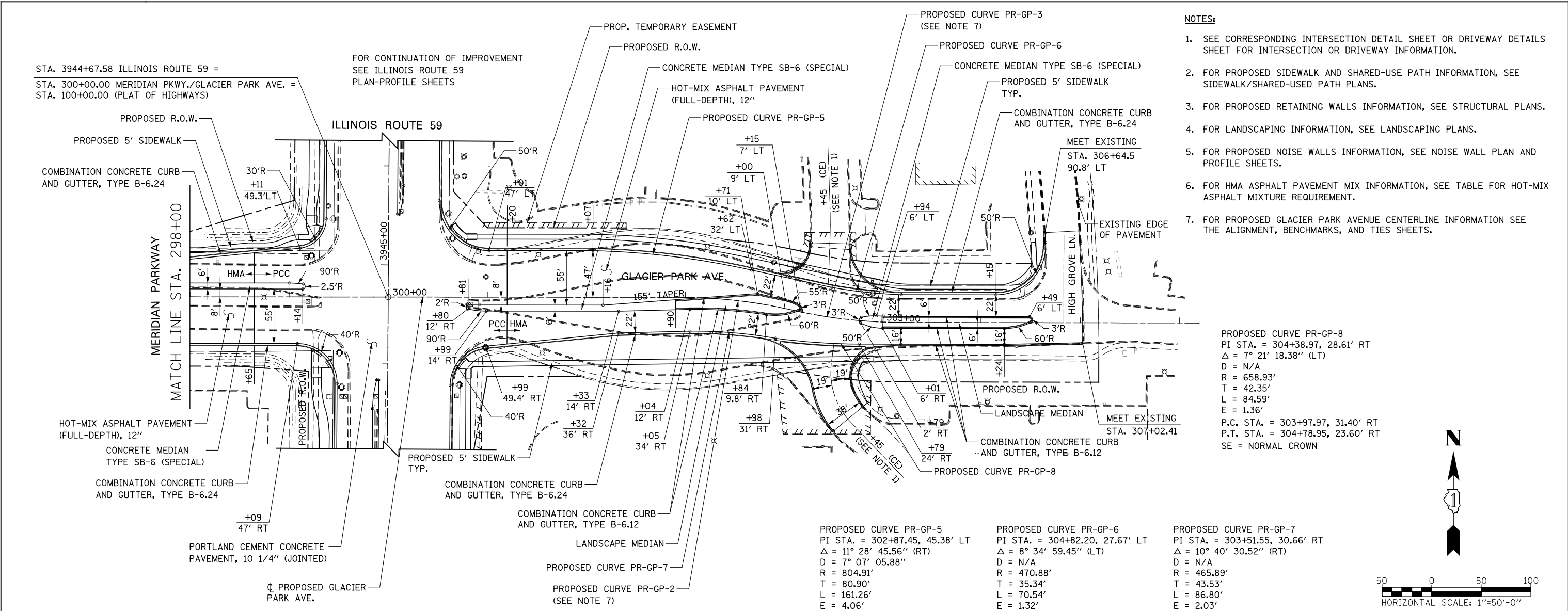
PLAN
 SURVEYED
 PLOTTED
 CHECKED
 ALIGNED
 FILE NAME
 NO. DATE

PROFILE
 SURVEYED
 PLOTTED
 CHECKED
 GRADES
 STRUCTURE
 NOTATIONS
 CHKD
 NO. DATE

STA. 3944+67.58 ILLINOIS ROUTE 59 =
 STA. 300+00.00 MERIDIAN PKWY./GLACIER PARK AVE. =
 STA. 100+00.00 (PLAT OF HIGHWAYS)

FOR CONTINUATION OF IMPROVEMENT
 SEE ILLINOIS ROUTE 59
 PLAN-PROFILE SHEETS

- NOTES:
1. SEE CORRESPONDING INTERSECTION DETAIL SHEET OR DRIVEWAY DETAILS SHEET FOR INTERSECTION OR DRIVEWAY INFORMATION.
 2. FOR PROPOSED SIDEWALK AND SHARED-USE PATH INFORMATION, SEE SIDEWALK/SHARED-USED PATH PLANS.
 3. FOR PROPOSED RETAINING WALLS INFORMATION, SEE STRUCTURAL PLANS.
 4. FOR LANDSCAPING INFORMATION, SEE LANDSCAPING PLANS.
 5. FOR PROPOSED NOISE WALLS INFORMATION, SEE NOISE WALL PLAN AND PROFILE SHEETS.
 6. FOR HMA ASPHALT PAVEMENT MIX INFORMATION, SEE TABLE FOR HOT-MIX ASPHALT MIXTURE REQUIREMENT.
 7. FOR PROPOSED GLACIER PARK AVENUE CENTERLINE INFORMATION SEE THE ALIGNMENT, BENCHMARKS, AND TIES SHEETS.

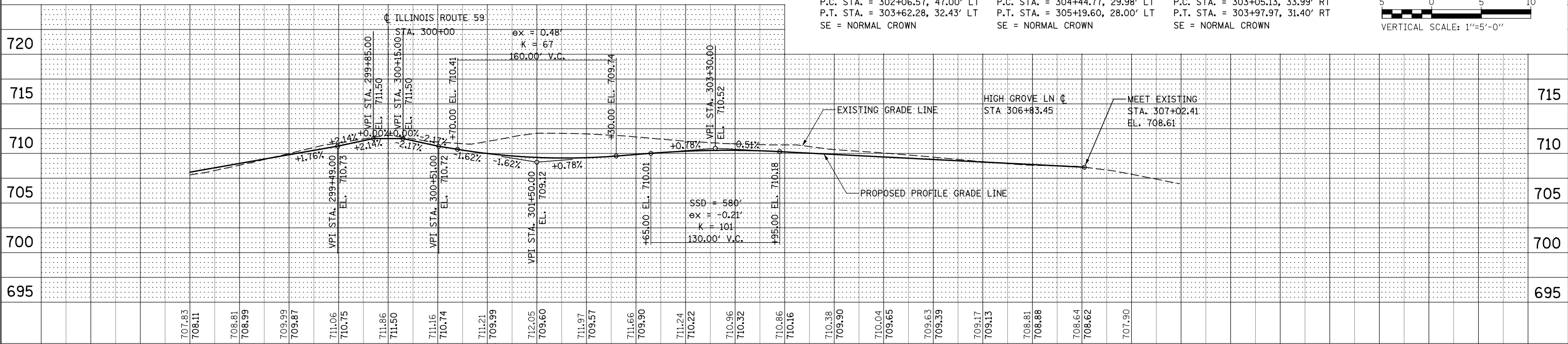
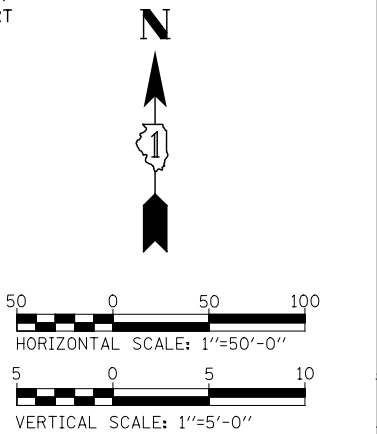


PROPOSED CURVE PR-GP-8
 PI STA. = 304+38.97, 28.61' RT
 $\Delta = 7^\circ 21' 18.38''$ (LT)
 D = N/A
 R = 658.93'
 T = 42.35'
 L = 84.59'
 E = 1.36'
 P.C. STA. = 303+97.97, 31.40' RT
 P.T. STA. = 304+78.95, 23.60' RT
 SE = NORMAL CROWN

PROPOSED CURVE PR-GP-5
 PI STA. = 302+87.45, 45.38' LT
 $\Delta = 11^\circ 28' 45.56''$ (RT)
 D = $7^\circ 07' 05.88''$
 R = 804.91'
 T = 80.90'
 L = 161.26'
 E = 4.06'
 P.C. STA. = 302+06.57, 47.00' LT
 P.T. STA. = 303+62.28, 32.43' LT
 SE = NORMAL CROWN

PROPOSED CURVE PR-GP-6
 PI STA. = 304+82.20, 27.67' LT
 $\Delta = 8^\circ 34' 59.45''$ (LT)
 D = N/A
 R = 804.91'
 T = 35.34'
 L = 70.54'
 E = 1.32'
 P.C. STA. = 304+44.77, 29.98' LT
 P.T. STA. = 305+19.60, 28.00' LT
 SE = NORMAL CROWN

PROPOSED CURVE PR-GP-7
 PI STA. = 303+51.55, 30.66' RT
 $\Delta = 10^\circ 40' 30.52''$ (RT)
 D = N/A
 R = 465.89'
 T = 43.53'
 L = 86.80'
 E = 2.03'
 P.C. STA. = 303+05.13, 33.99' RT
 P.T. STA. = 303+97.97, 31.40' RT
 SE = NORMAL CROWN



707.83	708.11	708.81	708.99	709.99	709.87	711.06	710.75	711.86	711.50	711.16	710.74	711.21	709.99	712.05	709.60	711.97	709.57	711.66	709.90	711.24	710.22	710.96	710.32	710.86	710.16	710.38	709.90	710.04	709.65	709.63	709.39	709.17	709.13	708.81	708.88	708.64	708.62	707.90																										
										298+00						299+00						300+00						301+00						302+00						303+00						304+00						305+00						306+00						307+00
																							DESIGNED	PJO	REVISIONS	-																																						
																							DRAWN	KES	REVISIONS	-																																						
																							CHECKED	JCM	REVISIONS	-																																						
																							DATE	12/14/2012	REVISIONS	-																																						
STATE OF ILLINOIS																							DEPARTMENT OF TRANSPORTATION																							PLAN AND PROFILE - MERIDIAN PKWY./GLACIER PARK AVE.																		
																							F.A.P. RTE.	338	SECTION	(112 & 113) WRS-7	COUNTY	DUPAGE	TOTAL SHEETS	1156	SHEET NO.	313																																
																							CONTRACT NO. 60R30																																									
																							FED. ROAD DIST. NO.	ILLINOIS	FED. AID PROJECT																																							
																							SCALE: AS SHOWN	SHEET NO. 13 OF 16 SHEETS	STA. 298+00 TO STA. 308+00																																							