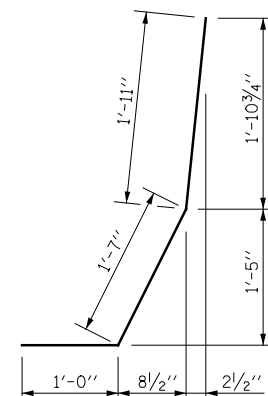


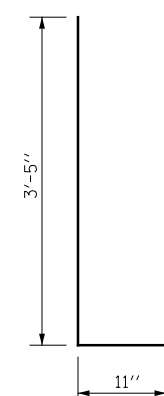
FORMED OPENING 8"W X 3"H
MAX SPA. 25' C-C
SEE NOTE 3

PROPOSED INLET
OR CATCH BASIN

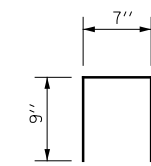
PLAN VIEW
CONCRETE BARRIER BASE NOTCH OUT FOR DRAINAGE STRUCTURES
LIGHT POLE FOUNDATION, SPECIAL



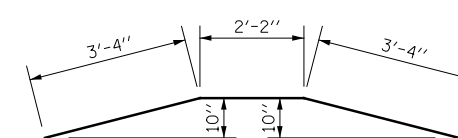
BAR d2(E)



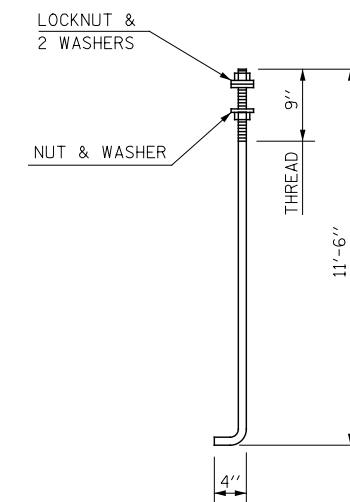
BAR d3(E)



BAR d5(E)

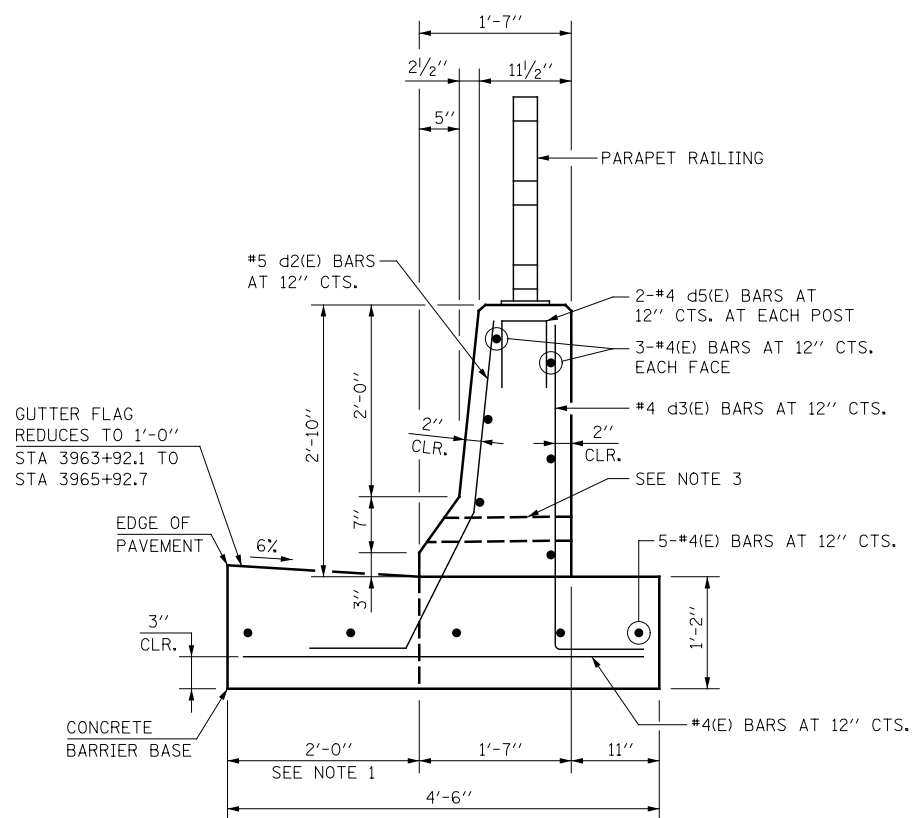


BAR d4(E)



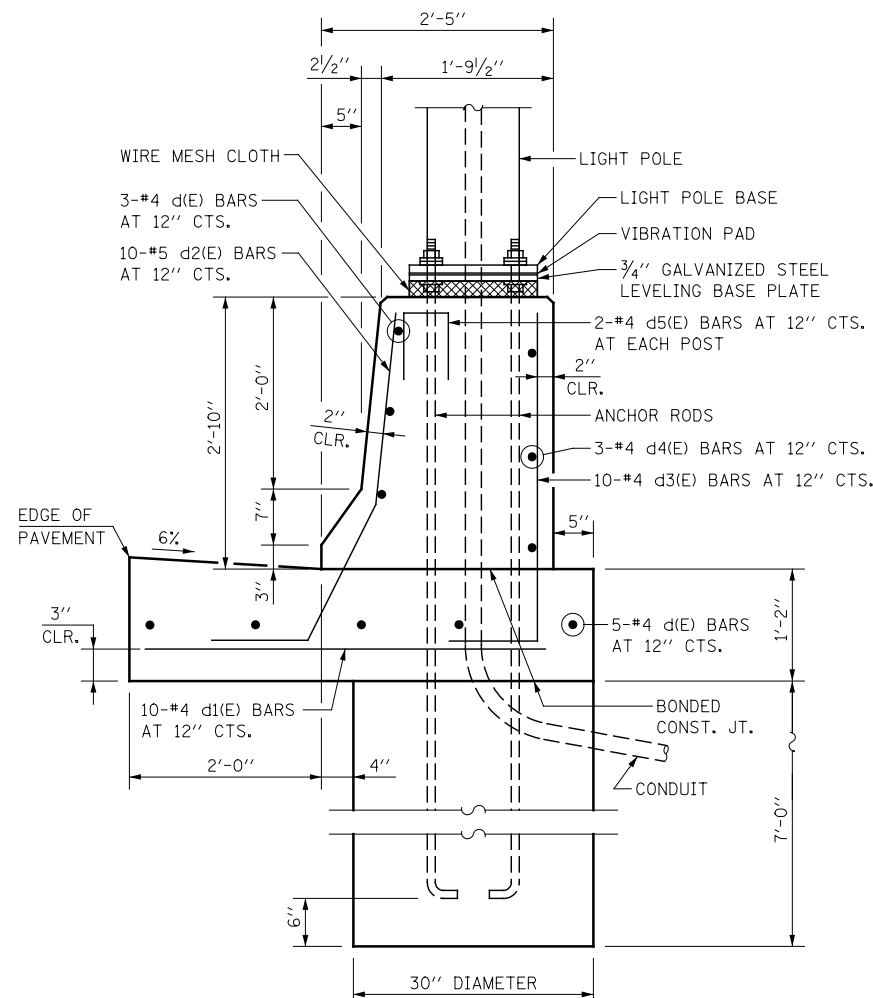
ANCHOR ROD

1" DIAMETER ANCHOR BOLTS
(ASTM F 1554 GRADE 10S) FULL LENGTH
HOT DIPPED GALVANIZED



GUTTER FLAG
REDUCES TO 1'-0"
STA 3963+92.1 TO
STA 3965+92.7

SECTION A-A
SINGLE FACE CONCRETE BARRIER WALL WITH
PARAPET RAILING AND CONCRETE BARRIER BASE



SECTION B-B
LIGHT POLE FOUNDATION, SPECIAL

NOTES

1. THE CONCRETE BARRIER BASE SHALL BE NOTCHED ONLY AT LOCATIONS WHERE DRAINAGE STRUCTURES ARE TO BE PLACED ALONG THE BARRIER WALL. THE GUTTER FLAG WILL BE POURED SEPARATELY AFTER THE DRAINAGE STRUCTURE IS SET IN PLACE.
2. SEE PLANS FOR LOCATIONS OF DRAINAGE STRUCTURES AND LIGHT POLES. DETAIL DOES NOT REPRESENT TYPICAL LOCATIONS OF BOTH DRAINAGE STRUCTURE AND LIGHT POLE.
3. THE BARRIER WALL SHALL HAVE FORMED OPENINGS 8"W X 3"H CAST THROUGH THE WALL. THE ELEVATION OF THE BOTTOM OF THE OPENING SHALL MATCH THE ELEVATION OF THE TOP OF THE PROPOSED SIDEWALK. THEY SHALL BE SPACED A MAXIMUM OF 25' C-C AND AS DIRECTED BY THE ENGINEER. NO OPENINGS SHALL BE FORMED WITHIN THE LIMITS THE LIGHT POLE SECTIONS.
4. 1" DEEP CONTRACTION JOINTS SHALL BE CONSTRUCTED IN THE BARRIER WALL ONLY (NOT IN THE BARRIER BASE). THE LOCATION OF THE CONTRACTION JOINT SHALL MATCH CRACKS THAT HAVE ALREADY DEVELOPED IN THE BASE. CONTRACTION JOINTS SHALL ALSO BE CONSTRUCTED AT BOTH SIDES OF ALL DRAINAGE STRUCTURES. MAXIMUM JOINT SPACING SHALL BE 30 FEET.
5. THE FORMING OF CONTRACTION JOINTS SHALL BE DONE WITH AN APPROVED FINISHING TOOL, AT THE DISCRETION OF THE ENGINEER, SUBJECT TO THE SATISFACTORY CONTROL OF CRACKING. THE SAWING OF CONTRACTION JOINTS IN THE BARRIER WALL SHALL NOT BE PERMITTED.
6. REINFORCEMENT BENDING DETAILS SHALL BE IN ACCORDANCE WITH THE "MANUAL OF STANDARD PRACTICE FOR DETAILING REINFORCED CONCRETE STRUCTURES", ACI 315, LATEST EDITION.
7. REINFORCEMENT BAR BENDING DIMENSIONS ARE OUT TO OUT.
8. REINFORCING BARS DESIGNATED "(E)" SHALL BE EPOXY COATED.
9. LOCATIONS FOR LIGHT POLE FOUNDATIONS, SPECIAL SHALL BE COORDINATED WITH THE LIGHTING DRAWINGS AND AS DIRECTED BY THE ENGINEER.
10. SINGLE FACE CONCRETE BARRIER WALL SHALL BE POURED SEPARATELY FROM THE CONCRETE BARRIER BASE.
11. SINGLE FACE CONCRETE BARRIER WALL AND REINFORCEMENT BARS, EPOXY COATED, AS SHOWN, SHALL BE IN ACCORDANCE WITH THE SPECIAL PROVISION FOR "CONCRETE BARRIER WALL (SPECIAL)"
12. CONCRETE BARRIER BASE AND PARAPET RAILING SHALL BE PAID FOR SEPARATELY AS "CONCRETE BARRIER BASE" AND "PARAPET RAILING", RESPECTIVELY.
13. LIGHT POLE FOUNDATIONS, SPECIAL SHALL BE IN ACCORDANCE WITH THE SPECIAL PROVISION FOR "LIGHT POLE FOUNDATION, SPECIAL"
14. FOUNDATIONS ARE DESIGNED TO BE LOCATED WHERE SOILS HAVE AN UNCONFINED COMPRESSIVE STRENGTH OF AT LEAST 1.0 TSF. THE CONTRACTOR SHALL VERIFY THE SOIL STRENGTH DURING DRILLING FOR LIGHT POLE FOUNDATION. IF OTHER CONDITIONS ARE ENCOUNTERED, THE CONTRACTOR SHALL NOTIFY THE ENGINEER AND PROCEED AS DIRECTED BY THE ENGINEER.

DESIGNED	PJO	REVISED	-
DRAWN	KES	REVISED	-
CHECKED	JCM	REVISED	-
DATE	12/14/2012	REVISED	-

STATE OF ILLINOIS
DEPARTMENT OF TRANSPORTATION

ROADWAY DETAILS		F.A.P. RTE.	SECTION	COUNTY	TOTAL SHEETS	SHEET NO.
SINGLE FACE CONCRETE BARRIER WALL WITH PARAPET RAILING DETAILS		338	(112 & 113) WRS-7	DUPAGE	1156	317
SCALE: AS SHOWN		SHEET NO. 1 OF 2 SHEETS		STA.	TO STA.	
		DT-01		CONTRACT NO. 60R30		
ILLINOIS FED. AID PROJECT						