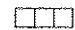
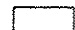
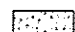

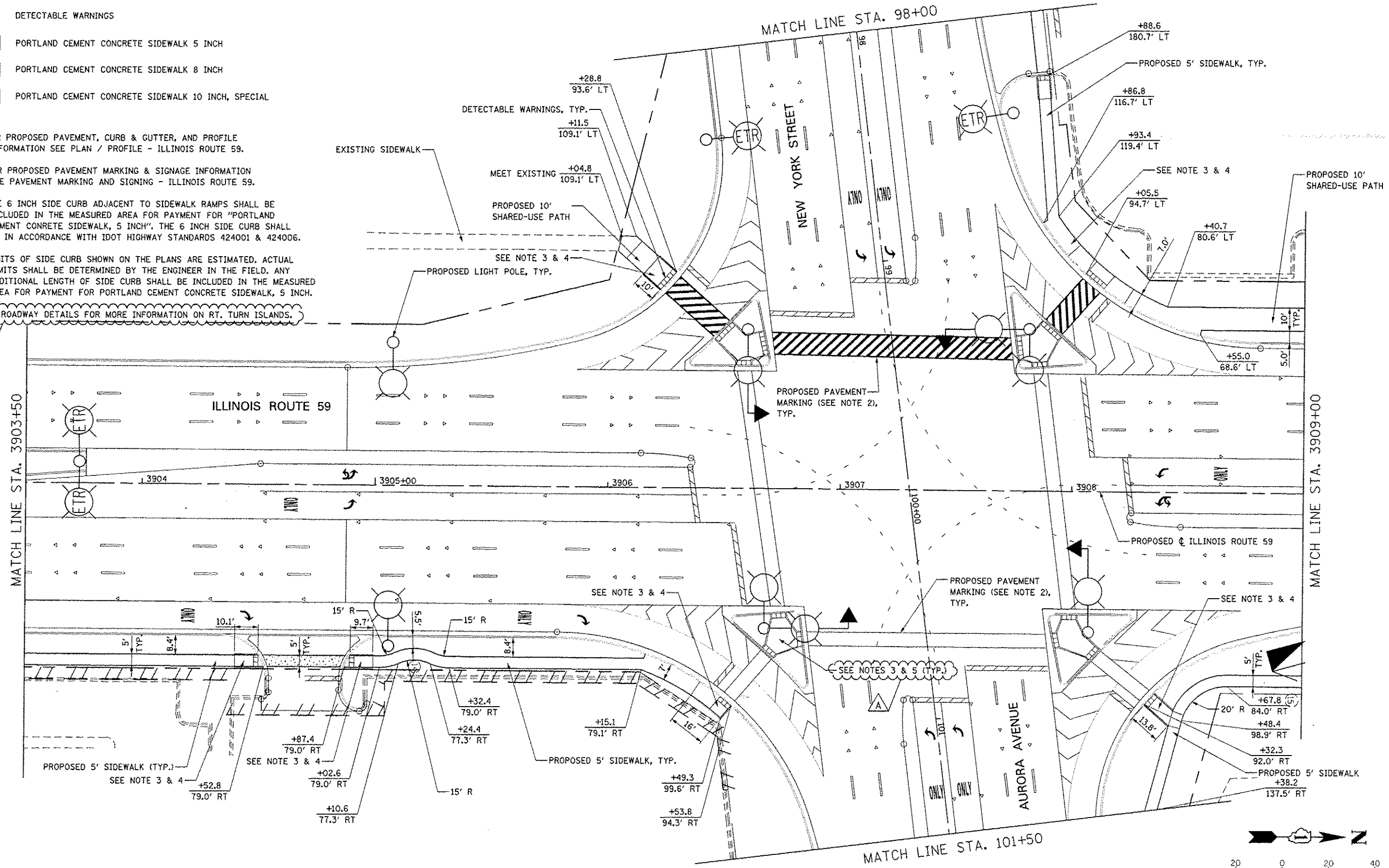


**LEGEND**

-  DETECTABLE WARNINGS
-  PORTLAND CEMENT CONCRETE SIDEWALK 5 INCH
-  PORTLAND CEMENT CONCRETE SIDEWALK 8 INCH
-  PORTLAND CEMENT CONCRETE SIDEWALK 10 INCH, SPECIAL

**NOTES**

1. FOR PROPOSED PAVEMENT, CURB & GUTTER, AND PROFILE INFORMATION SEE PLAN / PROFILE - ILLINOIS ROUTE 59.
2. FOR PROPOSED PAVEMENT MARKING & SIGNAGE INFORMATION SEE PAVEMENT MARKING AND SIGNING - ILLINOIS ROUTE 59.
3. THE 6 INCH SIDE CURB ADJACENT TO SIDEWALK RAMPS SHALL BE INCLUDED IN THE MEASURED AREA FOR PAYMENT FOR "PORTLAND CEMENT CONCRETE SIDEWALK, 5 INCH". THE 6 INCH SIDE CURB SHALL BE IN ACCORDANCE WITH IDOT HIGHWAY STANDARDS 424001 & 424006.
4. LIMITS OF SIDE CURB SHOWN ON THE PLANS ARE ESTIMATED. ACTUAL LIMITS SHALL BE DETERMINED BY THE ENGINEER IN THE FIELD. ANY ADDITIONAL LENGTH OF SIDE CURB SHALL BE INCLUDED IN THE MEASURED AREA FOR PAYMENT FOR PORTLAND CEMENT CONCRETE SIDEWALK, 5 INCH.
5. SEE ROADWAY DETAILS FOR MORE INFORMATION ON RT. TURN ISLANDS.



DESIGNED <i>PJO</i>	REVISED - ADDENDUM A 02/20/2013	<b>STATE OF ILLINOIS DEPARTMENT OF TRANSPORTATION</b>	<b>SIDEWALK / SHARED-USE PATH DETAILS ILLINOIS ROUTE 59</b>		F.A.P. RTE.	SECTION	COUNTY	TOTAL SHEETS	SHEET NO.
DRAWN <i>KES</i>	REVISED -				338	(112 & 113) WRS-7	DUPAGE	1156	327
CHECKED <i>JCM</i>	REVISED -				CONTRACT NO. 60R30				
DATE <i>12/14/2012</i>	REVISED -				ILLINOIS FED. AID PROJECT				