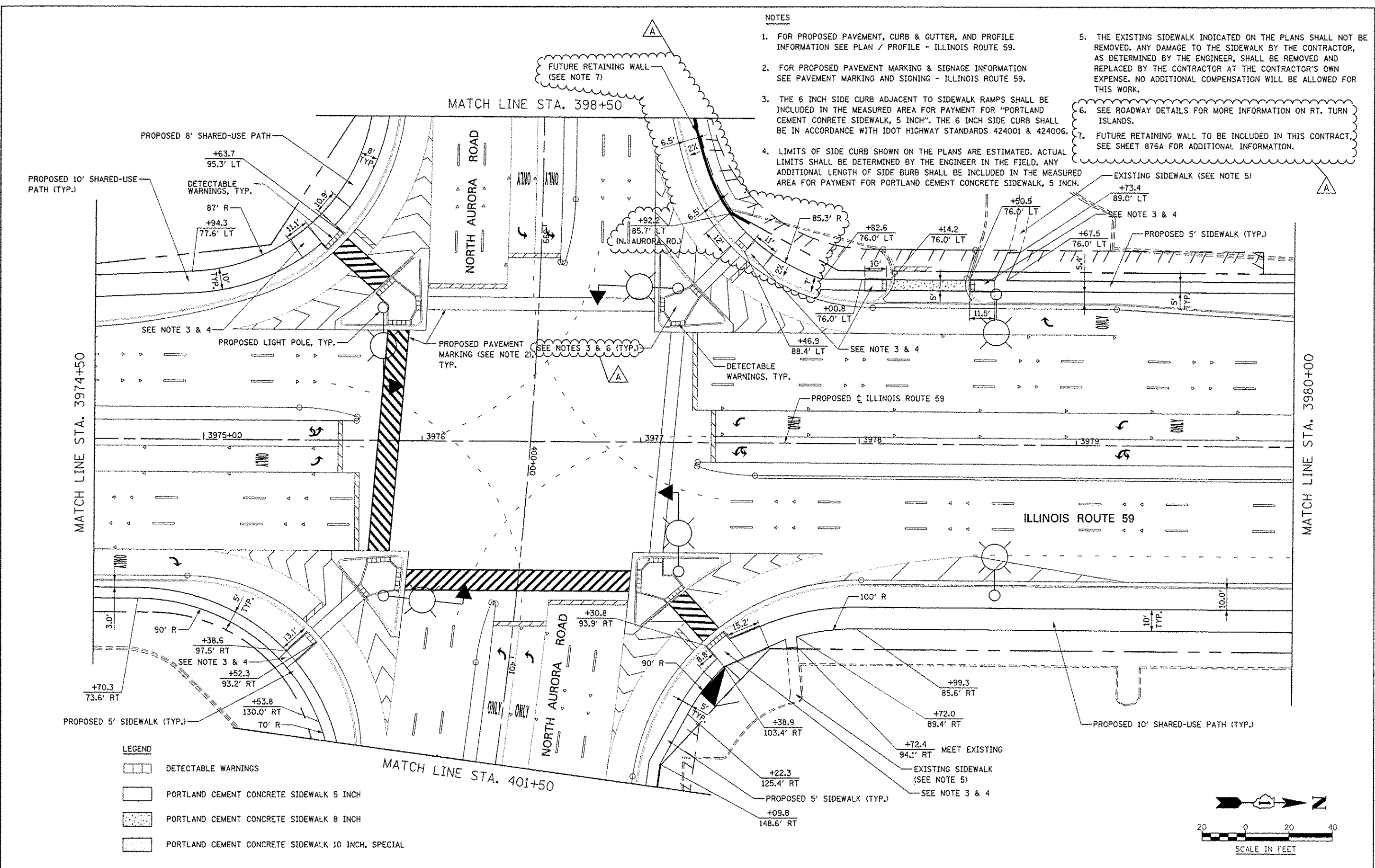


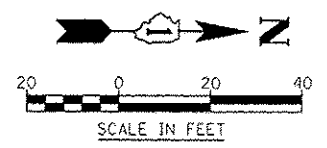
**NOTES**

1. FOR PROPOSED PAVEMENT, CURB & GUTTER, AND PROFILE INFORMATION SEE PLAN / PROFILE - ILLINOIS ROUTE 59.
2. FOR PROPOSED PAVEMENT MARKING & SIGNAGE INFORMATION SEE PAVEMENT MARKING AND SIGNING - ILLINOIS ROUTE 59.
3. THE 6 INCH SIDE CURB ADJACENT TO SIDEWALK RAMPS SHALL BE INCLUDED IN THE MEASURED AREA FOR PAYMENT FOR "PORTLAND CEMENT CONCRETE SIDEWALK, 5 INCH". THE 6 INCH SIDE CURB SHALL BE IN ACCORDANCE WITH IDOT HIGHWAY STANDARDS 424001 & 424006.
4. LIMITS OF SIDE CURB SHOWN ON THE PLANS ARE ESTIMATED. ACTUAL LIMITS SHALL BE DETERMINED BY THE ENGINEER IN THE FIELD. ANY ADDITIONAL LENGTH OF SIDE CURB SHALL BE INCLUDED IN THE MEASURED AREA FOR PAYMENT FOR PORTLAND CEMENT CONCRETE SIDEWALK, 5 INCH.
5. THE EXISTING SIDEWALK INDICATED ON THE PLANS SHALL NOT BE REMOVED. ANY DAMAGE TO THE SIDEWALK BY THE CONTRACTOR, AS DETERMINED BY THE ENGINEER, SHALL BE REMOVED AND REPLACED BY THE CONTRACTOR AT THE CONTRACTOR'S OWN EXPENSE. NO ADDITIONAL COMPENSATION WILL BE ALLOWED FOR THIS WORK.
6. SEE ROADWAY DETAILS FOR MORE INFORMATION ON RT. TURN ISLANDS.
7. FUTURE RETAINING WALL TO BE INCLUDED IN THIS CONTRACT. SEE SHEET 876A FOR ADDITIONAL INFORMATION.



**LEGEND**

[Symbol]	DETECTABLE WARNINGS
[Symbol]	PORTLAND CEMENT CONCRETE SIDEWALK 5 INCH
[Symbol]	PORTLAND CEMENT CONCRETE SIDEWALK 8 INCH
[Symbol]	PORTLAND CEMENT CONCRETE SIDEWALK 10 INCH, SPECIAL



DESIGNED <i>PJO</i>	REVISED - ADDENDUM A 02/20/2013	<b>STATE OF ILLINOIS DEPARTMENT OF TRANSPORTATION</b>	<b>SIDEWALK / SHARED-USE PATH DETAILS ILLINOIS ROUTE 59</b>		F.A.P. RTE.	SECTION	COUNTY	TOTAL SHEETS	SHEET NO.	
DRAWN <i>KES</i>	REVISED -		SCALE: AS SHOWN	SHEET NO. 16 OF 32 SHEETS	STA. 3974+50 TO STA. 3980+00	338	(112 & 113) WRS-7	DUPAGE	1156	341
CHECKED <i>JCM</i>	REVISED -					CONTRACT NO. 60R30				
DATE: 12/14/2012	REVISED -					ILLINOIS FED. AID PROJECT				