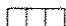
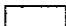
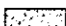

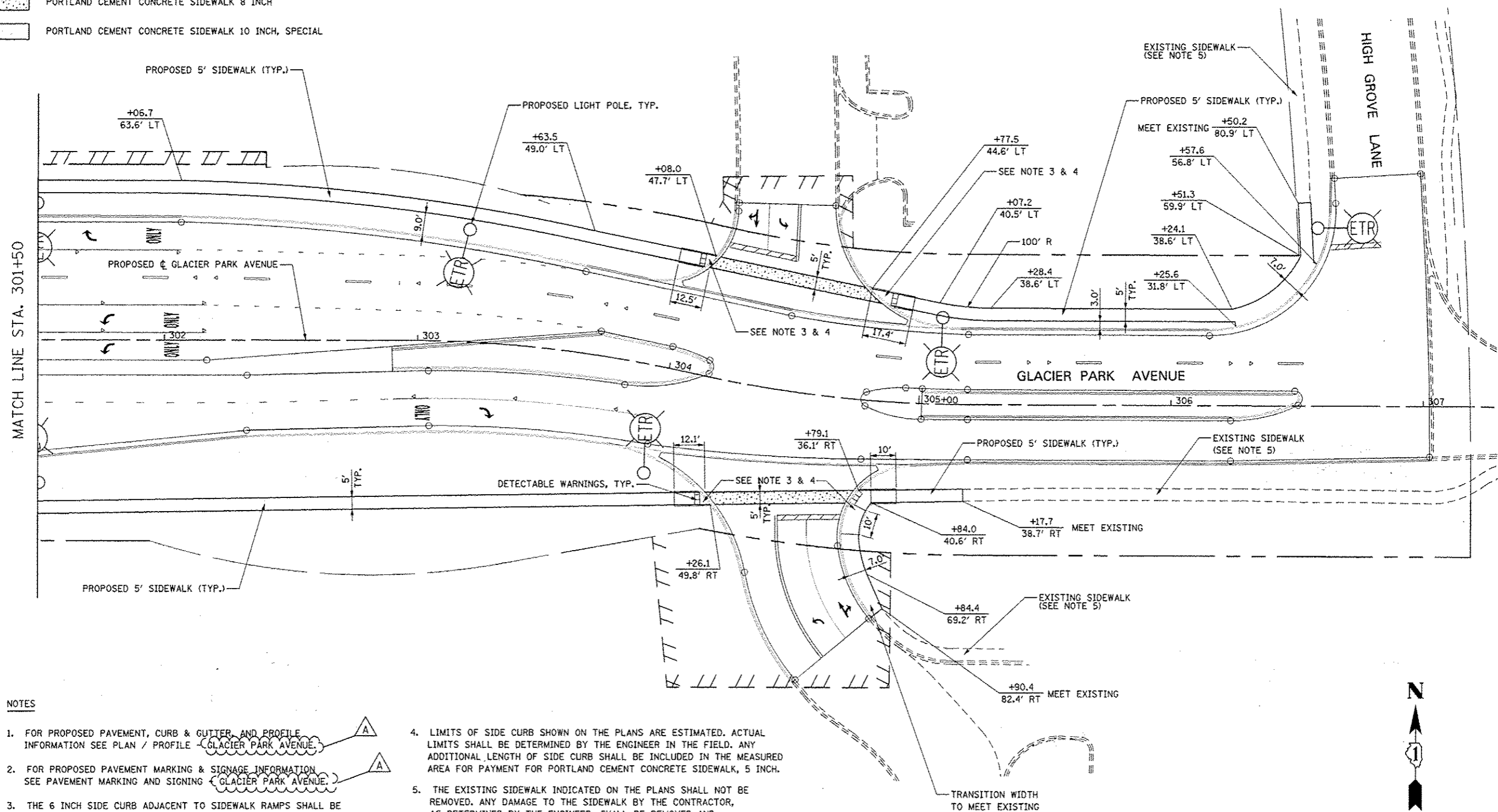


LEGEND

-  DETECTABLE WARNINGS
-  PORTLAND CEMENT CONCRETE SIDEWALK 5 INCH
-  PORTLAND CEMENT CONCRETE SIDEWALK 8 INCH
-  PORTLAND CEMENT CONCRETE SIDEWALK 10 INCH, SPECIAL



NOTES

1. FOR PROPOSED PAVEMENT, CURB & GUTTER AND PROFILE INFORMATION SEE PLAN / PROFILE - GLACIER PARK AVENUE.
2. FOR PROPOSED PAVEMENT MARKING & SIGNAGE INFORMATION SEE PAVEMENT MARKING AND SIGNING - GLACIER PARK AVENUE.
3. THE 6 INCH SIDE CURB ADJACENT TO SIDEWALK RAMPS SHALL BE INCLUDED IN THE MEASURED AREA FOR PAYMENT FOR "PORTLAND CEMENT CONCRETE SIDEWALK, 5 INCH". THE 6 INCH SIDE CURB SHALL BE IN ACCORDANCE WITH IDOT HIGHWAY STANDARDS 424001 & 424006.
4. LIMITS OF SIDE CURB SHOWN ON THE PLANS ARE ESTIMATED. ACTUAL LIMITS SHALL BE DETERMINED BY THE ENGINEER IN THE FIELD. ANY ADDITIONAL LENGTH OF SIDE CURB SHALL BE INCLUDED IN THE MEASURED AREA FOR PAYMENT FOR PORTLAND CEMENT CONCRETE SIDEWALK, 5 INCH.
5. THE EXISTING SIDEWALK INDICATED ON THE PLANS SHALL NOT BE REMOVED. ANY DAMAGE TO THE SIDEWALK BY THE CONTRACTOR, AS DETERMINED BY THE ENGINEER, SHALL BE REMOVED AND REPLACED BY THE CONTRACTOR AT THE CONTRACTOR'S OWN EXPENSE. NO ADDITIONAL COMPENSATION WILL BE ALLOWED FOR THIS WORK.

DESIGNED	PJO	REVISED -	ADDENDUM A 02/20/2013
DRAWN	KES	REVISED -	
CHECKED	JCM	REVISED -	
DATE	12/14/2012	REVISED -	

**STATE OF ILLINOIS
DEPARTMENT OF TRANSPORTATION**

**SIDEWALK / SHARED-USE PATH DETAILS
GLACIER PARK AVENUE**

SCALE: AS SHOWN SHEET NO. 26 OF 32 SHEETS STA. 301+50 TO STA. 307+00

F.A.P. RTE.	SECTION	COUNTY	TOTAL SHEETS	SHEET NO.
338	(112 & 113) WRS-7	DUPAGE	1156	351
CONTRACT NO. 60R30				
ILLINOIS FED. AID PROJECT				