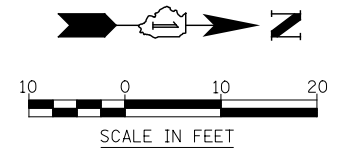
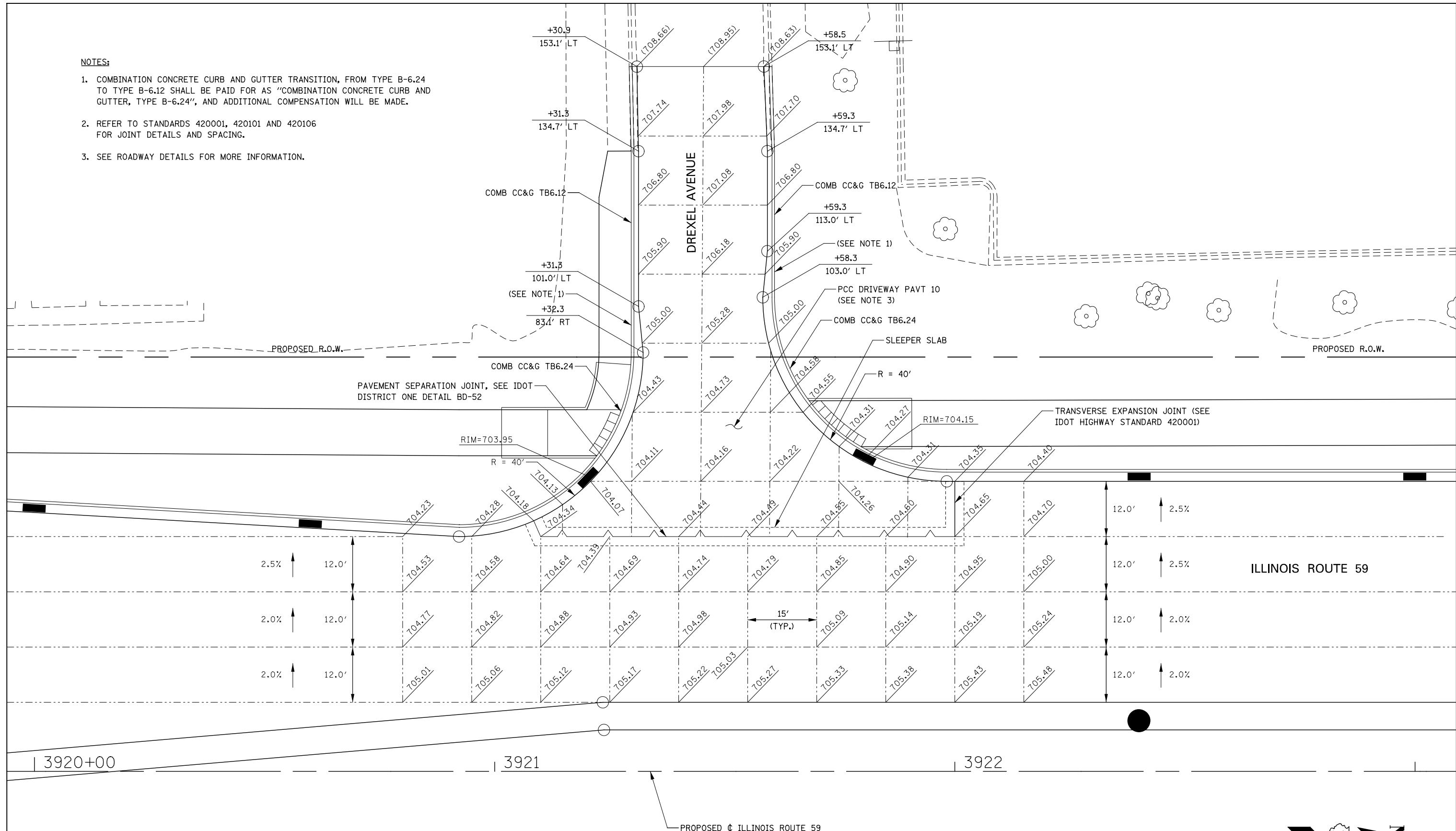


NOTES:

1. COMBINATION CONCRETE CURB AND GUTTER TRANSITION, FROM TYPE B-6.24 TO TYPE B-6.12 SHALL BE PAID FOR AS "COMBINATION CONCRETE CURB AND GUTTER, TYPE B-6.24", AND ADDITIONAL COMPENSATION WILL BE MADE.
2. REFER TO STANDARDS 420001, 420101 AND 420106 FOR JOINT DETAILS AND SPACING.
3. SEE ROADWAY DETAILS FOR MORE INFORMATION.



DESIGNED	PJA	REVISED	-	STATE OF ILLINOIS DEPARTMENT OF TRANSPORTATION	INTERSECTION DETAILS ILLINOIS ROUTE 59 AND DREXEL AVENUE	F.A.P. RTE.	SECTION	COUNTY	TOTAL SHEETS	SHEET NO.
DRAWN	KAV	REVISED	-			338	(112 & 113) WRS-7	DUPAGE	1156	365
CHECKED	JCH	REVISED	-			CONTRACT NO. 60R30				
DATE	12/14/2012	REVISED	-			ILLINOIS FED. AID PROJECT				
				SCALE: AS SHOWN		SHEET NO. 2 OF 9 SHEETS		STA. 3919+94 TO STA. 3923+09		