
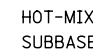
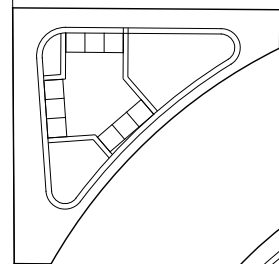
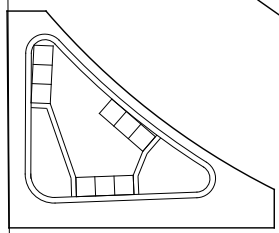
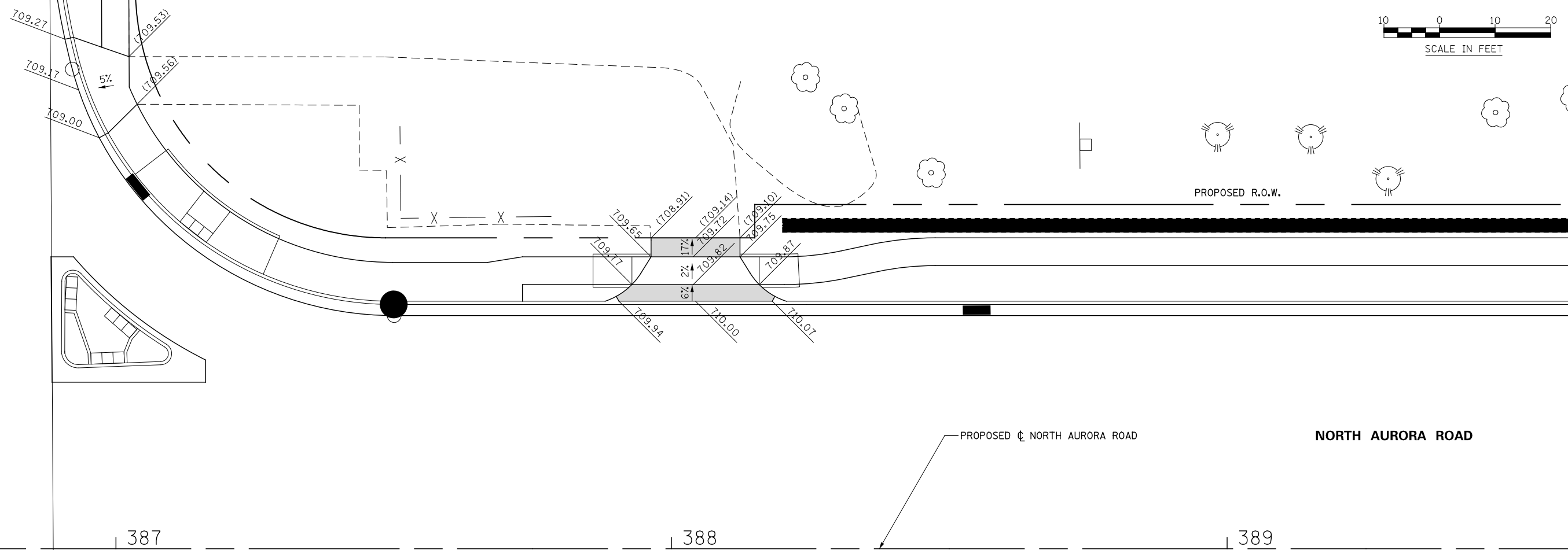
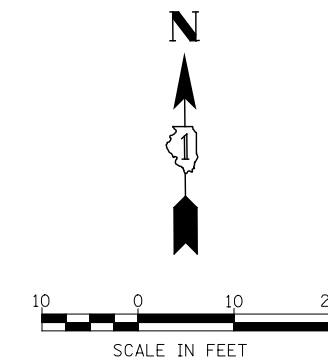


LEGEND:

-  HOT-MIX ASPHALT DRIVEWAY PAVEMENT, 10" (SEE NOTE 1)
-  SUBBASE GRANULAR MATERIAL, TYPE B 4"

NOTES:

1. FOR HMA MATERIAL REQUIREMENTS SEE HMA MIXTURE CHART ON THE GENERAL NOTE SHEET.



DESIGNED	PJO	REVISED	-
DRAWN	KES	REVISED	-
CHECKED	JCM	REVISED	-
DATE	12/14/2012	REVISED	-

**STATE OF ILLINOIS
DEPARTMENT OF TRANSPORTATION**

**DRIVEWAY DETAILS
NORTH AURORA ROAD - STA 386+94 & STA 388+05**

F.A.P. RTE.	SECTION	COUNTY	TOTAL SHEETS	SHEET NO.
338	(112 & 113) WRS-7	DUPAGE	1156	403
CONTRACT NO. 60R30				

SCALE: AS SHOWN | SHEET NO. 31 OF 37 SHEETS | STA. TO STA.

ILLINOIS FED. AID PROJECT