
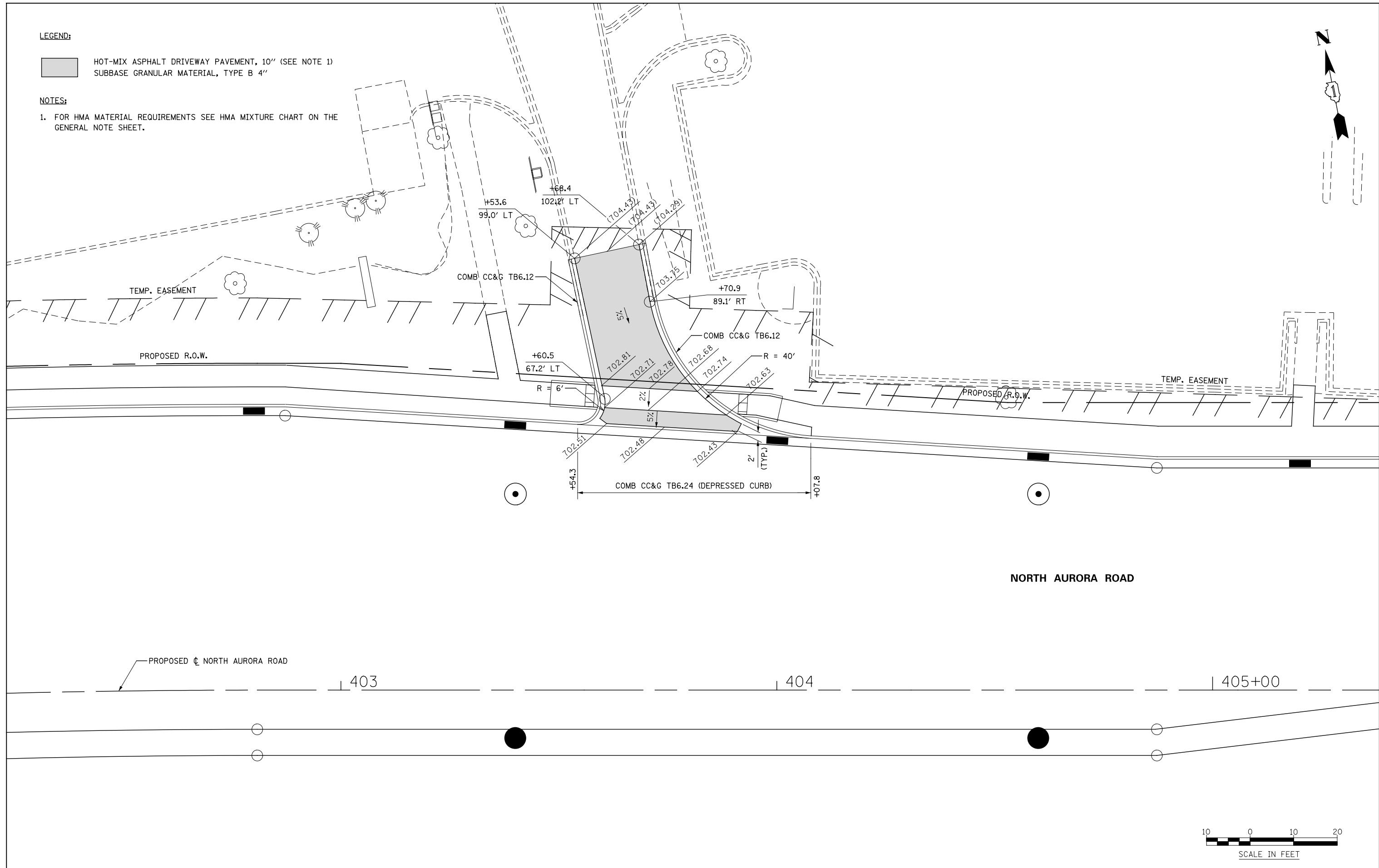
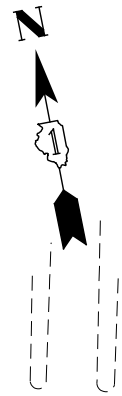


**LEGEND:**

-  HOT-MIX ASPHALT DRIVEWAY PAVEMENT, 10" (SEE NOTE 1)
-  SUBBASE GRANULAR MATERIAL, TYPE B 4"

**NOTES:**

1. FOR HMA MATERIAL REQUIREMENTS SEE HMA MIXTURE CHART ON THE GENERAL NOTE SHEET.



**NORTH AURORA ROAD**

PROPOSED  $\phi$  NORTH AURORA ROAD

403

404

405+00



SCALE IN FEET

DESIGNED	PJO	REVISED	-
DRAWN	KES	REVISED	-
CHECKED	JCM	REVISED	-
DATE	12/14/2012	REVISED	-

**STATE OF ILLINOIS  
DEPARTMENT OF TRANSPORTATION**

**DRIVEWAY DETAILS  
NORTH AURORA ROAD - STA 403+70**

SCALE: AS SHOWN | SHEET NO. 33 OF 37 SHEETS | STA. TO STA.

F.A.P. RTE.	SECTION	COUNTY	TOTAL SHEETS	SHEET NO.
338	(112 & 113) WRS-7	DUPAGE	1156	405
CONTRACT NO. 60R30				
ILLINOIS FED. AID PROJECT				