

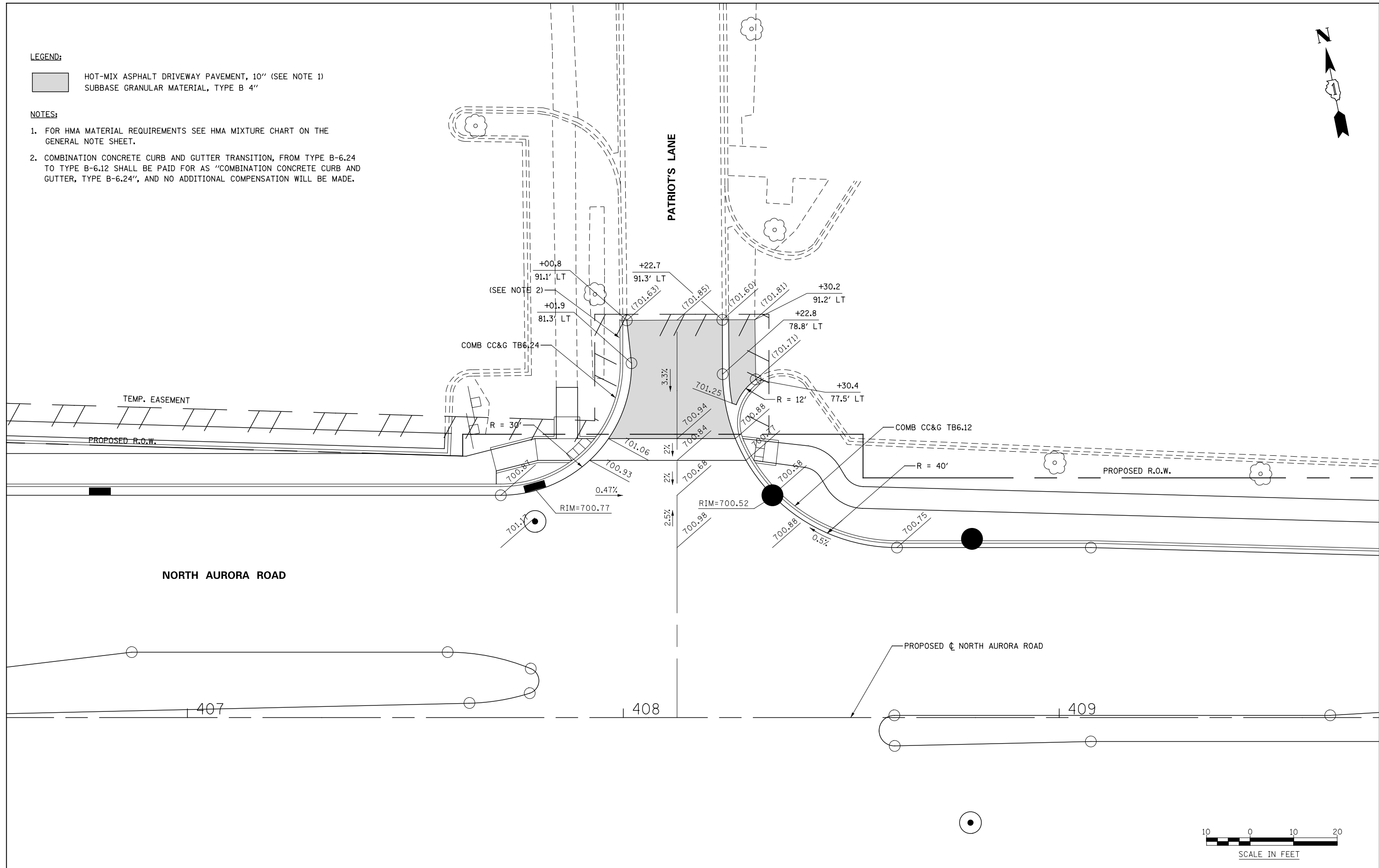


LEGEND:

- HOT-MIX ASPHALT DRIVEWAY PAVEMENT, 10" (SEE NOTE 1)
- SUBBASE GRANULAR MATERIAL, TYPE B 4"

NOTES:

1. FOR HMA MATERIAL REQUIREMENTS SEE HMA MIXTURE CHART ON THE GENERAL NOTE SHEET.
2. COMBINATION CONCRETE CURB AND GUTTER TRANSITION, FROM TYPE B-6.24 TO TYPE B-6.12 SHALL BE PAID FOR AS "COMBINATION CONCRETE CURB AND GUTTER, TYPE B-6.24", AND NO ADDITIONAL COMPENSATION WILL BE MADE.



	DESIGNED <i>PJO</i>	REVISED -	STATE OF ILLINOIS DEPARTMENT OF TRANSPORTATION	DRIVEWAY DETAILS NORTH AURORA ROAD - STA 408+12	F.A.P. RTE.	SECTION	COUNTY	TOTAL SHEETS	SHEET NO.	
	DRAWN <i>KES</i>	REVISED -			338	(112 & 113) WRS-7	DUPAGE	1156	407	
	CHECKED <i>JCM</i>	REVISED -			CONTRACT NO. 60R30					
	DATE <i>12/14/2012</i>	REVISED -			ILLINOIS FED. AID PROJECT					
					SCALE: AS SHOWN		SHEET NO. 35 OF 37 SHEETS		STA. TO STA.	