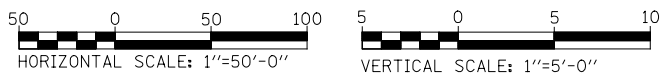
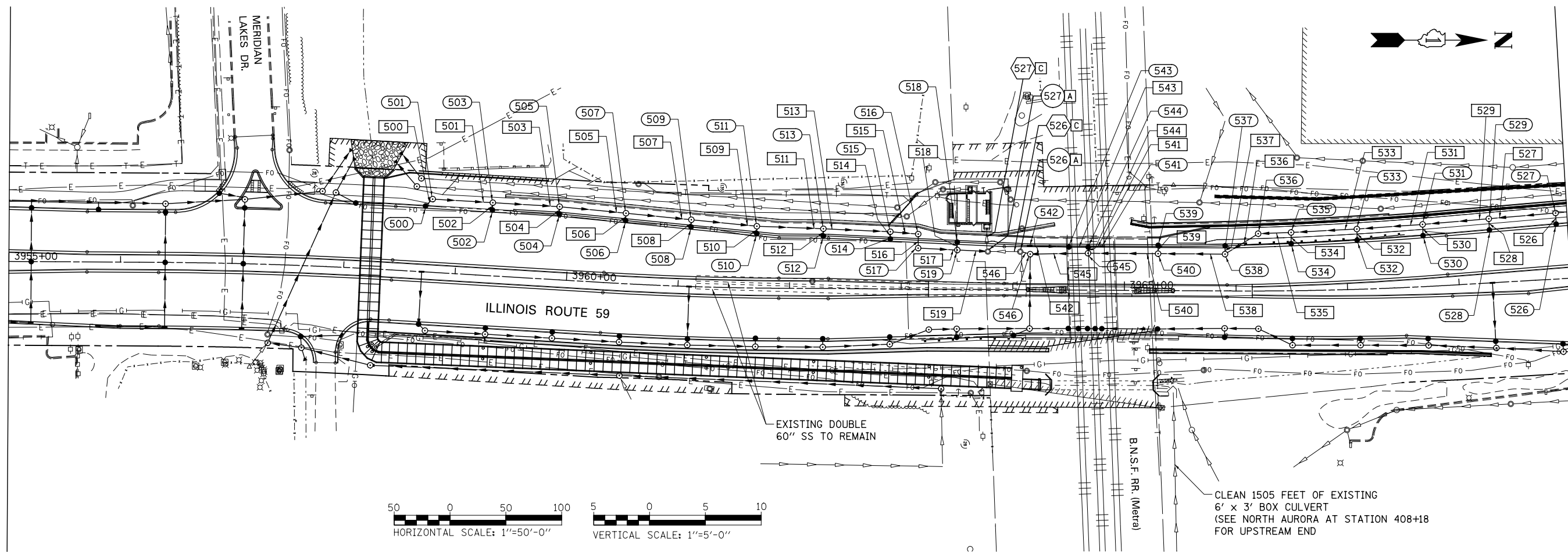


PLAN	SURVEYED	BY	DATE
	PLOTTED		
	CHECKED		
	ALIGNED		
	FILED		
	NO. _____		
	FILE NAME _____		

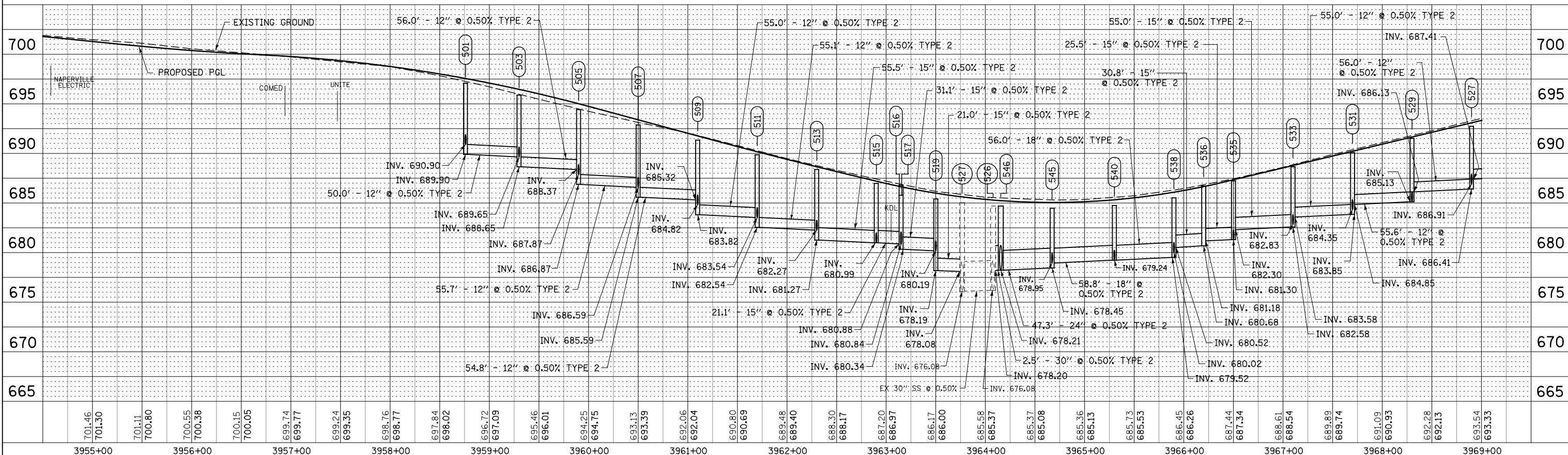
PROFILE	SURVEYED	BY	DATE
	PLOTTED		
	GRADES CHECKED		
	STRUCTURE NOTATIONS OK'D		
	NO. _____		

MATCH LINE STA. 3955+00
SEE DRAWING DP-04

MATCH LINE STA. 3969+00
SEE DRAWING DP-06B



CLEAN 1505 FEET OF EXISTING
6' x 3' BOX CULVERT
(SEE NORTH AURORA AT STATION 408+18
FOR UPSTREAM END)



DESIGNED	JWM	REVISED	-
DRAWN	KES	REVISED	-
CHECKED	JRS	REVISED	-
DATE	12/14/2012	REVISED	-

STATE OF ILLINOIS
DEPARTMENT OF TRANSPORTATION

PROPOSED DRAINAGE PLAN & PROFILE - ILLINOIS ROUTE 59

SCALE: 1"=50' SHEET NO. 9 OF 25 SHEETS STA. 3955+00 TO STA. 3969+00

F.A.P. RTE.	SECTION	COUNTY	TOTAL SHEETS	SHEET NO.
338	(112 & 113) WRS-7	DUPAGE	1156	475
DP-05B			CONTRACT NO. 60R30	
FED. ROAD DIST. NO.	ILLINOIS FED. AID PROJECT			