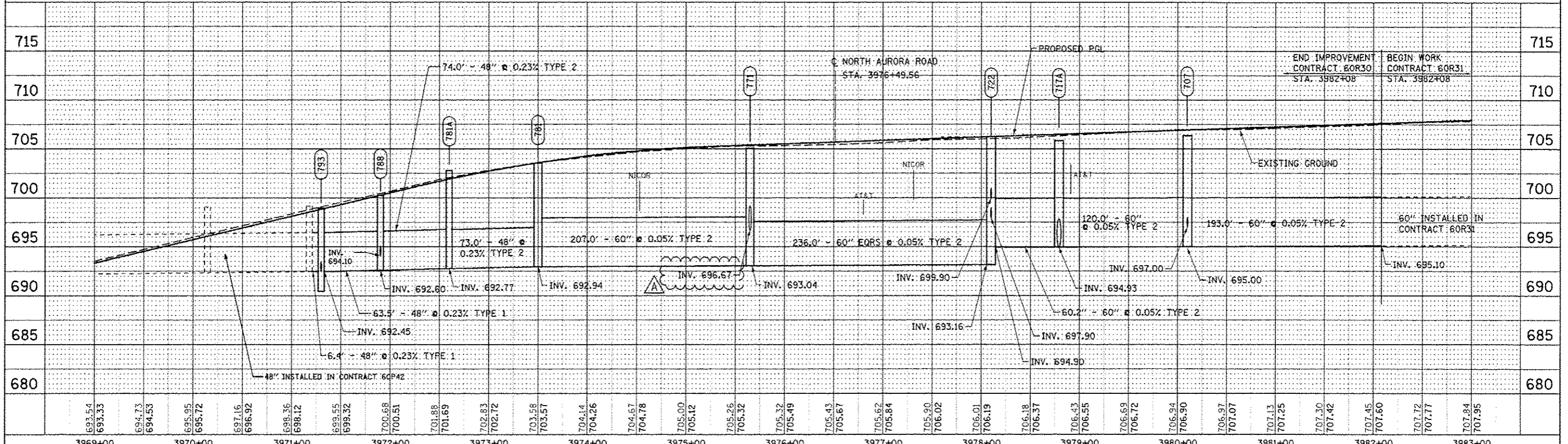
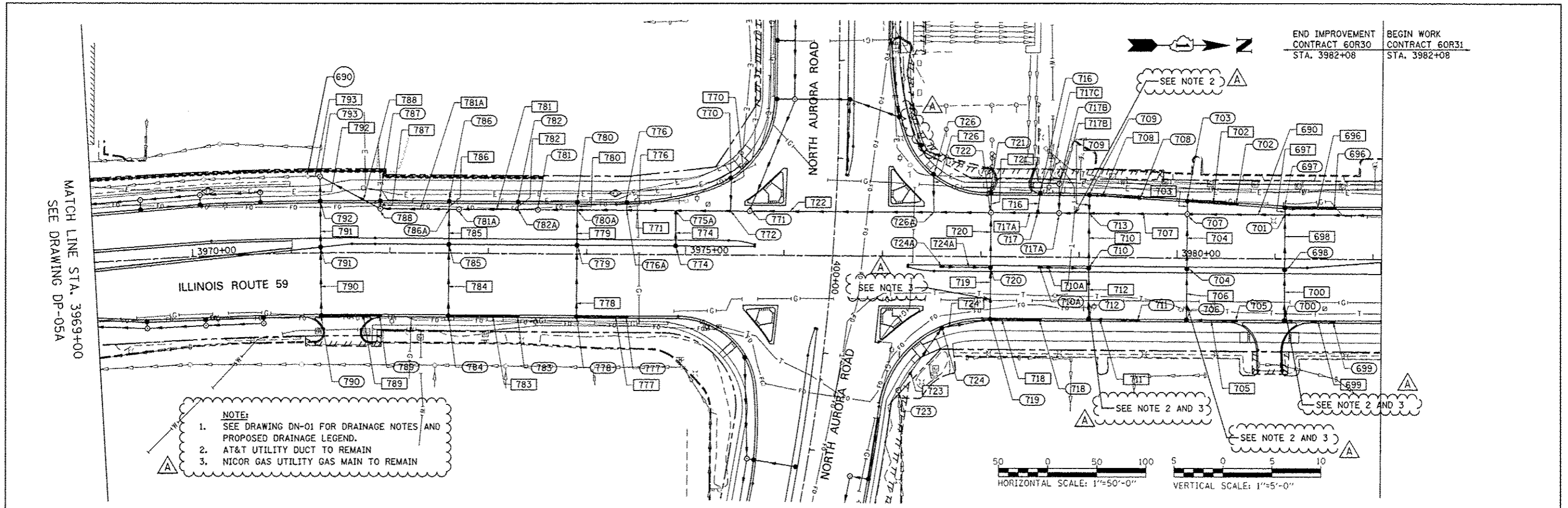


PLAN	DATE
DESIGNED	
DRAWN	
CHECKED	
DATE	

PROFILE	DATE
DESIGNED	
DRAWN	
CHECKED	
DATE	



3969+00	3970+00	3971+00	3972+00	3973+00	3974+00	3975+00	3976+00	3977+00	3978+00	3979+00	3980+00	3981+00	3982+00	3983+00																																												
693.54	693.33	694.73	694.53	695.95	695.72	697.16	696.92	698.36	698.12	699.55	699.32	700.68	700.51	701.88	701.69	702.83	702.72	703.58	703.57	704.14	704.26	704.67	704.78	705.00	705.12	705.26	705.32	705.32	705.49	705.49	705.43	705.67	705.62	705.84	705.90	706.02	706.01	706.19	706.18	706.37	706.43	706.55	706.69	706.72	706.84	706.90	706.97	707.07	707.13	707.25	707.30	707.42	707.45	707.60	707.72	707.77	707.84	707.95

DESIGNED	JWM	REVISED	ADDENDUM A 02/20/2013
DRAWN	KES	REVISED	
CHECKED	JRS	REVISED	
DATE	12/14/2012	REVISED	

**STATE OF ILLINOIS  
DEPARTMENT OF TRANSPORTATION**

**PROPOSED DRAINAGE PLAN & PROFILE - ILLINOIS ROUTE 59**

SCALE: 1"=50' SHEET NO. 11 OF 25 SHEETS STA. 3969+00 TO STA. END

F.A.P. RTE.	SECTION	COUNTY	TOTAL SHEETS	SHEET NO.
338	(112 & 113) WRS-7	DUPAGE	1156	477
DP-06A			CONTRACT NO. 60R30	
FED. ROAD DIST. NO. ILLINOIS FED. AID PROJECT				