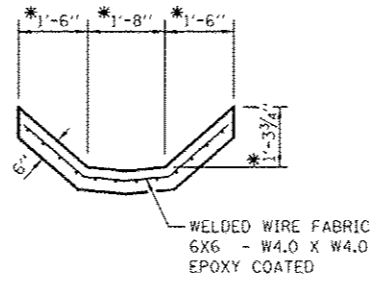
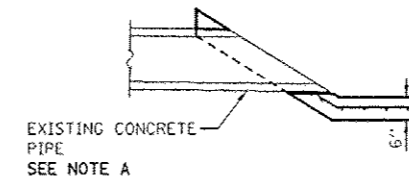


**SECTION A-A**

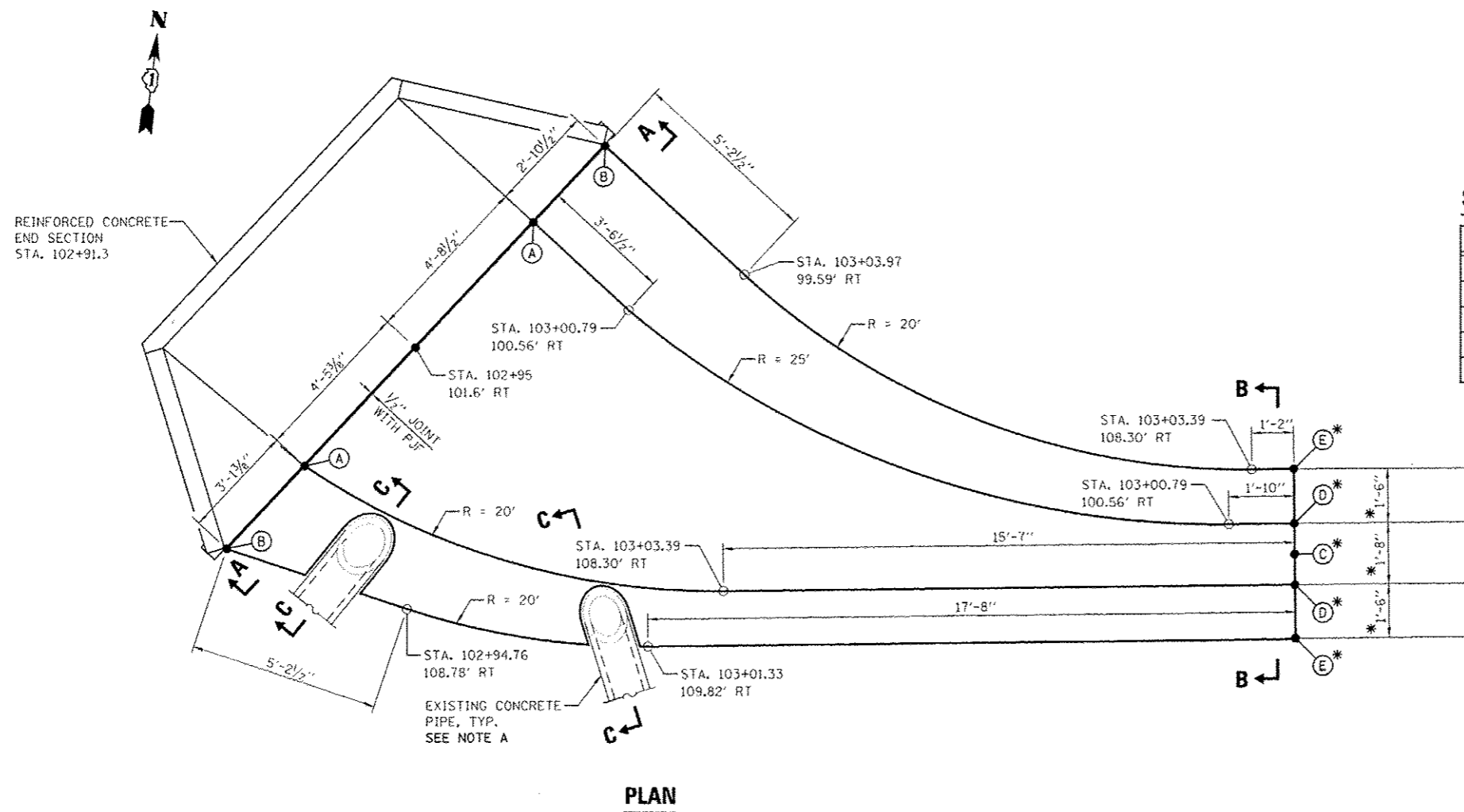


**SECTION B-B**



**SECTION C-C**

**NOTE A**  
 PROVIDE A NOTCH IN THE PAVED DITCH AROUND THE EXISTING CONCRETE PIPE. THE NOTCH SHALL BE 1" WIDER ON EACH SIDE OF THE CONCRETE PIPE. PROVIDE 1" PJF BETWEEN THE PAVED DITCH AND THE CONCRETE PIPE. MODIFY THE END OF EXISTING CONCRETE PIPE TO MATCH SLOPE OF PAVED DITCH. BOTH THE NOTCH IN THE PAVED DITCH AND THE MODIFICATIONS TO THE EXISTING CONCRETE PIPE SHALL BE AS DIRECTED AND TO THE SATISFACTION OF THE ENGINEER.



**PLAN**

**PAVED DITCH SPOT ELEVATIONS**

LOCATION	ELEVATION
(A)	687.58
(B)	689.50
(C)	*687.55
(D)	*687.62
(E)	*686.93

**BILL OF MATERIALS**

ITEM	UNIT	QUANTITY
CONCRETE STRUCTURES	CU YD	4.6
WELDED WIRE FABRIC 6X6	SQ YD	31.0

**LEGEND**

PJF PREFORMED JOINT FILLER

**GENERAL NOTES**

ALL SLOPE RATIOS ARE EXPRESSED AS UNITS OF VERTICAL DISPLACEMENT TO UNITS OF HORIZONTAL DISPLACEMENT (V:H).  
 \*MATCH EXISTING

DESIGNED <i>TB</i>	REVISD -  02/11/2013	<b>STATE OF ILLINOIS DEPARTMENT OF TRANSPORTATION</b>	<b>DRAINAGE DETAILS PAVED DITCH (SPECIAL) STA. 102 + 95</b>		F.A.P. RTE.	SECTION	COUNTY	TOTAL SHEETS	SHEET NO.
DRAWN <i>TB</i>	REVISD -		338	(112 & 113) WRS-7	DUPAGE	1156	507		
CHECKED <i>WPM</i>	REVISD -		SCALE: NONE		DD-08	CONTRACT NO. 60R30			
DATE <i>12/14/2012</i>	REVISD -		SHEET NO. 1 OF 1 SHEETS	STA. TO STA.	ILLINOIS FED. AID PROJECT				