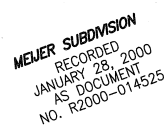
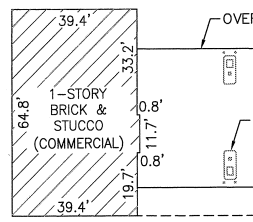
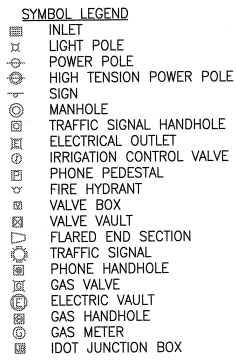
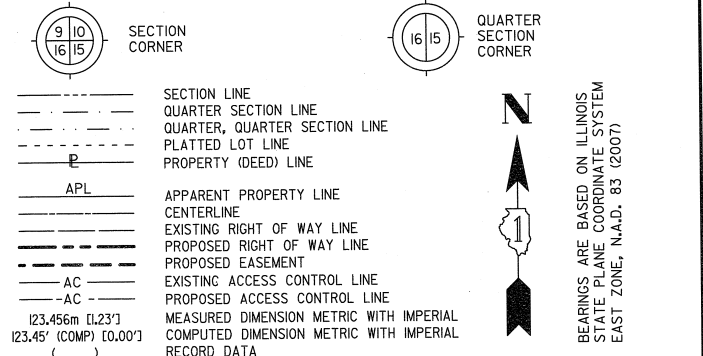


PART OF THE NE 1/4 SECTION 21 AND PART OF THE NW 1/4 SECTION 22, ALL IN T38N, R9E OF THE 3rd PM, NAPERVILLE TOWNSHIP, DUPAGE COUNTY, ILLINOIS.

LEGEND



PROJECT COORDINATES ARE SHOWN

NO.	STATION	OFFSET	NORTH-COORDINATES-EAST-
121	3925+41.68	00.00' LT	N 857,937.6168 E 19,090.1583
297	3925+69.94	90.00' LT	N 857,966.4265 E 19,000.3326
298	3925+72.50	95.00' LT	N 857,969.0199 E 18,995.3484
882	3925+79.73	85.00' RT	N 857,975.1543 E 19,175.3892
834	3925+91.73	96.99' RT	N 857,987.0738 E 19,187.4555
1618	3925+92.55	122.00' RT	N 857,987.7456 E 19,212.4691
299	3925+94.53	95.00' LT	N 857,991.0493 E 18,995.4830
1620	3925+94.53	127.00' LT	N 857,991.2448 E 18,963.4836
831	3926+41.73	90.99' RT	N 858,037.1093 E 19,181.7601
1510	3926+41.73	122.00' RT	N 858,036.9199 E 19,212.7695
884	3926+47.72	85.00' RT	N 858,043.1382 E 19,175.8045
1619	3926+51.87	122.00' RT	N 858,047.0593 E 19,212.8315
271	3926+53.30	85.00' RT	N 858,048.7186 E 19,175.8386
272	3926+66.00	85.00' RT	N 858,061.4184 E 19,175.9162
273	3926+66.00	75.00' RT	N 858,061.4794 E 19,165.9164
1622	3926+86.73	95.00' LT	N 858,083.2445 E 18,996.0462
1621	3926+86.73	127.00' LT	N 858,083.4400 E 18,964.0468
275	3928+18.57	75.00' RT	N 858,214.0466 E 19,166.8485
276	3928+18.57	85.00' RT	N 858,213.9855 E 19,176.8483
277	3928+28.57	85.00' RT	N 858,223.9853 E 19,176.9094
278	3928+28.57	75.00' RT	N 858,224.0464 E 19,166.9096
274	3929+03.73	75.00' RT	N 858,299.2055 E 19,167.3687
1104	3929+22.05	95.00' LT	N 858,318.5659 E 18,997.4838

PARCEL NUMBER	OWNER	TOTAL HOLDING ACRES	PART TAKEN ACRES	REMAINDER ACRES	PREV. DED. ACRES	EASEMENT ACRES	EASEMENT PURPOSE	PERMANENT TAX INDEX NUMBER	PROPERTY ACQUIRED BY
1HJ0010A	CENTRO NP HOLDINGS 6 SPE, L.L.C. A DELAWARE LIMITED LIABILITY COMPANY	50.079	0.201	49.652				07-22-102-009	
1HJ0010B			0.041						
1HJ0010C			0.169						
1HJ0010D			0.016						
1HJ0010E			0.044						
1HJ0014A	MEJER STORES LIMITED PARTNERSHIP, A MICHIGAN LIMITED PARTNERSHIP	38.327	0.060	37.940				07-21-200-040	
1HJ0014B			0.250						
1HJ0014C			0.059						
1HJ0014D			0.018						
1HJ0014PE			0.068						
1HJ0020	SLEVIN CAPITAL DEVELOPMENT, INC., A CALIFORNIA CORPORATION	1.152	0.077	1.075				07-22-102-004	
1HJ0020PE			0.009 AC 384 SF						
1HJ0020TE-B			0.002 AC 100 SF						

SEE SHEET A7

SEE SHEET A9

SEE SHEET A11

SEE SHEET A13

SEE SHEET A15

SEE SHEET A17

SEE SHEET A19

SEE SHEET A21

SEE SHEET A23

SEE SHEET A25

SEE SHEET A27

SEE SHEET A29

SEE SHEET A31

SEE SHEET A33

SEE SHEET A35

SEE SHEET A37

SEE SHEET A39

- NOTES:
- 1) ALL COORDINATES SHOWN HEREON ARE PROJECT. ALL DISTANCES SHOWN HEREON ARE GROUND.
 - 2) BEARINGS SHOWN HEREON ARE BASED ON ILLINOIS STATE PLANE COORDINATE SYSTEM EAST ZONE, NAD 83, (2007).
 - 3) THE COMBINATION FACTOR USED FOR THIS PROJECT = 0.99994777.
 - 4) COORDINATE CONVERSION
- NAD83 (2007) STATE PLANE COORDINATES TO PROJECT COORDINATES:
 A) DIVIDE THE STATE PLANE NAD83 GRID COORDINATES BY THE COMBINATION FACTOR.
 B) SUBTRACT 1,000,000.00 FROM THESE NORTHINGS AND EASTINGS.
- PROJECT COORDINATES TO NAD83 (2007) STATE PLANE COORDINATES:
 A) ADD 1,000,000.00 TO THE PROJECT NORTHINGS AND EASTINGS.
 B) MULTIPLY THESE COORDINATES BY THE COMBINATION FACTOR.
- 5) THE NGS MONUMENT HELD FOR THIS PROJECT IS FIRST ORDER P.I.D. AA3750.
- | NAD83 (2007) S.P. | PROJECT (GROUND) |
|-------------------|------------------|
| N. 1,869,327.5048 | N. 869,425.1449 |
| E. 1,023,602.1293 | E. 23,655.5948 |

RECEIVED
 DEC 14 2011
 PLATS & LEGALS

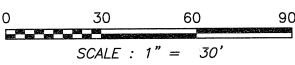
Classen, White & Associates, P.C.
 121 AIRPORT DRIVE, UNIT 1
 JOLIET, ILLINOIS 60431
 (815) 744-3720

SHEET 1 IS A COVER SHEET AND NOT RECORDED.

**PLAT OF HIGHWAYS
 STATE OF ILLINOIS
 DEPARTMENT OF TRANSPORTATION
 F.A.P. 338 ILLINOIS ROUTE 59**

SECTION FERRY RD. TO AURORA AVE. DUPAGE COUNTY
 PROJECT JOB NO. R-91-035-09
 STATION 3925+00 TO STATION 3929+22
 SCALE: 1" = 30' SHEET A8 OF 11

**BUREAU OF LAND ACQUISITION
 201 WEST CENTER COURT
 SCHAUMBURG, ILLINOIS 60196-1096**



PRINTING DATE: DECEMBER 14, 2011 - KAG \MicroStation\Sheet AB R4.dgn