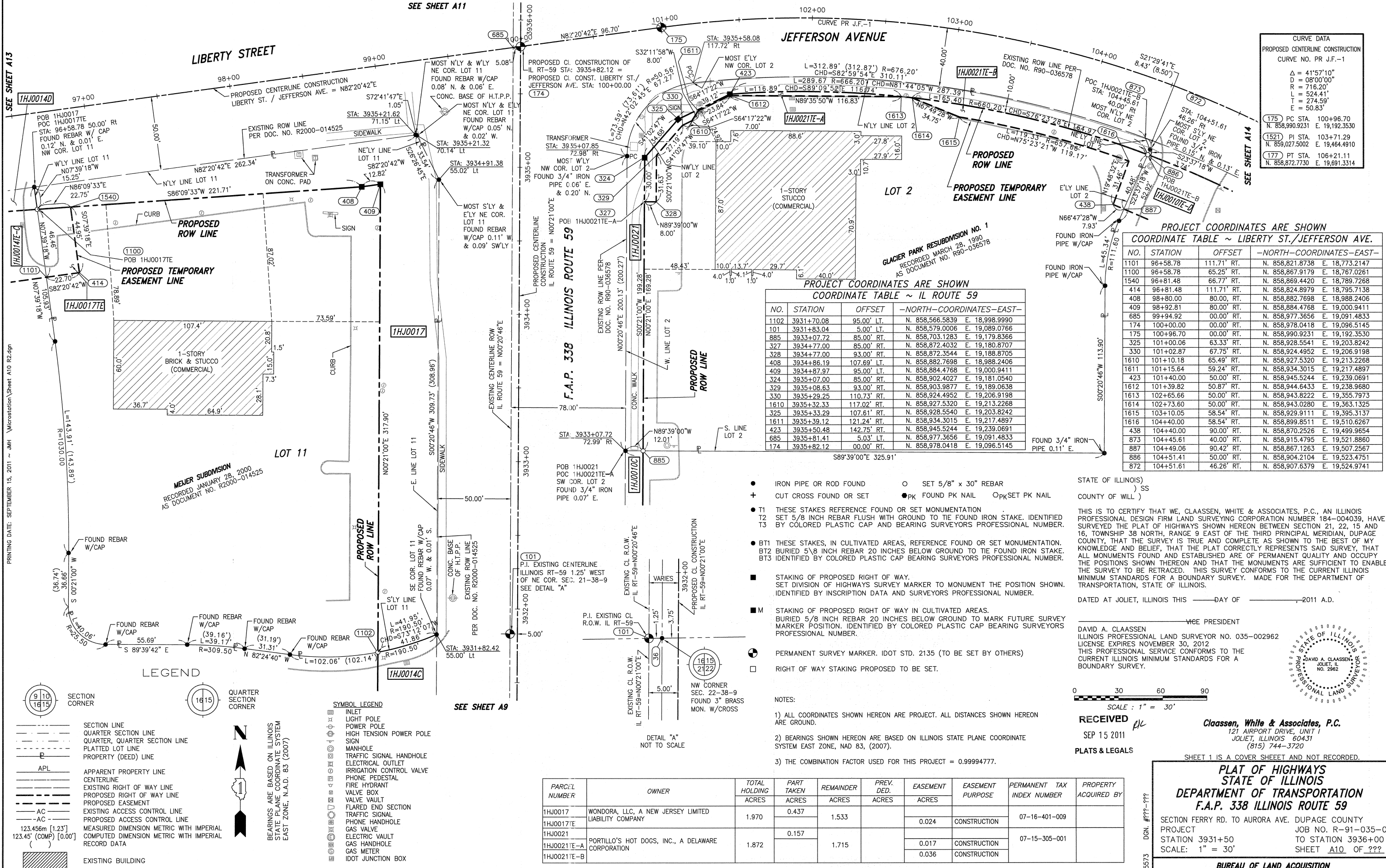


SEE SHEET A11



**CURVE DATA**  
 PROPOSED CENTERLINE CONSTRUCTION  
 CURVE NO. PR J.F.-1

Δ	= 41°57'10"
D	= 08°00'00"
R	= 716.20'
L	= 524.41'
T	= 274.59'
E	= 50.83'

(175) PC STA. 100+96.70  
 N. 858,990.9231 E. 19,192.3530  
 (152) PI STA. 103+71.29  
 N. 858,027.5002 E. 19,464.4910  
 (177) PT STA. 106+21.11  
 N. 858,872.7730 E. 19,691.3314

**PROJECT COORDINATES ARE SHOWN**  
 COORDINATE TABLE ~ LIBERTY ST./JEFFERSON AVE.

NO.	STATION	OFFSET	-NORTH-COORDINATES-EAST-
1101	96+58.78	111.71' RT.	N. 858,821.8738 E. 18,773.2147
1100	96+58.78	65.25' RT.	N. 858,867.9179 E. 18,767.0261
1540	96+81.48	66.77' RT.	N. 858,869.4420 E. 18,789.7268
414	96+81.48	111.71' RT.	N. 858,824.8979 E. 18,795.7138
408	98+80.00	80.00' RT.	N. 858,882.7698 E. 18,988.2406
409	98+80.00	80.00' RT.	N. 858,884.4768 E. 19,000.9411
685	99+94.92	00.00' RT.	N. 858,977.3656 E. 19,091.4833
174	100+00.00	00.00' RT.	N. 858,978.0418 E. 19,096.5145
175	100+96.70	00.00' RT.	N. 858,990.9231 E. 19,192.3530
325	101+00.00	63.33' RT.	N. 858,928.5541 E. 19,203.8242
330	101+02.87	67.75' RT.	N. 858,924.4952 E. 19,206.9198
1610	101+10.18	65.49' RT.	N. 858,927.5320 E. 19,213.2268
1611	101+15.64	59.24' RT.	N. 858,934.3015 E. 19,217.4897
423	101+40.00	50.00' RT.	N. 858,945.5244 E. 19,239.0691
1612	101+39.82	50.87' RT.	N. 858,944.6433 E. 19,238.9680
1613	102+65.66	50.00' RT.	N. 858,943.8222 E. 19,355.7973
1614	102+73.60	50.00' RT.	N. 858,943.0280 E. 19,363.1325
1615	103+10.05	58.54' RT.	N. 858,929.9111 E. 19,395.3137
1616	104+40.00	58.54' RT.	N. 858,899.8511 E. 19,510.6267
438	104+40.00	90.00' RT.	N. 858,870.2526 E. 19,499.9654
873	104+45.61	40.00' RT.	N. 858,915.4795 E. 19,521.8860
887	104+49.06	90.42' RT.	N. 858,867.1263 E. 19,507.2567
886	104+51.41	50.00' RT.	N. 858,904.2104 E. 19,523.4751
872	104+51.61	46.26' RT.	N. 858,907.6379 E. 19,524.9741

**PROJECT COORDINATES ARE SHOWN**  
 COORDINATE TABLE ~ IL ROUTE 59

NO.	STATION	OFFSET	-NORTH-COORDINATES-EAST-
1102	3931+70.08	95.00' LT.	N. 858,566.5839 E. 18,998.9990
101	3931+83.04	5.00' LT.	N. 858,579.0006 E. 19,089.0766
885	3933+07.72	85.00' RT.	N. 858,703.1283 E. 19,179.8366
327	3934+77.00	85.00' RT.	N. 858,872.4032 E. 19,180.8707
328	3934+77.00	93.00' RT.	N. 858,872.3544 E. 19,188.8705
408	3934+86.19	107.69' LT.	N. 858,882.7698 E. 18,988.2406
409	3934+87.97	95.00' RT.	N. 858,884.4768 E. 19,000.9411
324	3935+07.00	85.00' RT.	N. 858,902.4027 E. 19,181.0540
329	3935+08.63	93.00' RT.	N. 858,903.9877 E. 19,189.0638
330	3935+29.25	110.73' RT.	N. 858,924.4952 E. 19,206.9198
1610	3935+32.33	117.02' RT.	N. 858,927.5320 E. 19,213.2268
325	3935+33.29	107.61' RT.	N. 858,928.5540 E. 19,203.8242
1611	3935+39.12	121.24' RT.	N. 858,934.3015 E. 19,217.4897
423	3935+50.48	142.75' RT.	N. 858,945.5244 E. 19,239.0691
685	3935+81.41	5.03' LT.	N. 858,977.3656 E. 19,091.4833
174	3935+82.12	00.00' RT.	N. 858,978.0418 E. 19,096.5145

- IRON PIPE OR ROD FOUND ○ SET 5/8" x 30" REBAR
- + CUT CROSS FOUND OR SET ● PK FOUND PK NAIL ○ PK SET PK NAIL
- T1 THESE STAKES REFERENCE FOUND OR SET MONUMENTATION
- T2 SET 5/8 INCH REBAR FLUSH WITH GROUND TO THE FOUND IRON STAKE. IDENTIFIED BY COLORED PLASTIC CAP AND BEARING SURVEYORS PROFESSIONAL NUMBER.
- T3
- BT1 THESE STAKES, IN CULTIVATED AREAS, REFERENCE FOUND OR SET MONUMENTATION.
- BT2 BURIED 5/8 INCH REBAR 20 INCHES BELOW GROUND TO THE FOUND IRON STAKE.
- BT3 IDENTIFIED BY COLORED PLASTIC CAP BEARING SURVEYORS PROFESSIONAL NUMBER.
- STAKING OF PROPOSED RIGHT OF WAY. SET DIVISION OF HIGHWAYS SURVEY MARKER TO MONUMENT THE POSITION SHOWN. IDENTIFIED BY INSCRIPTION DATA AND SURVEYORS PROFESSIONAL NUMBER.
- M STAKING OF PROPOSED RIGHT OF WAY IN CULTIVATED AREAS. BURIED 5/8 INCH REBAR 20 INCHES BELOW GROUND TO MARK FUTURE SURVEY MARKER POSITION. IDENTIFIED BY COLORED PLASTIC CAP BEARING SURVEYORS PROFESSIONAL NUMBER.
- ⊕ PERMANENT SURVEY MARKER. IDOT STD. 2135 (TO BE SET BY OTHERS)
- RIGHT OF WAY STAKING PROPOSED TO BE SET.

NOTES:  
 1) ALL COORDINATES SHOWN HEREON ARE PROJECT. ALL DISTANCES SHOWN HEREON ARE GROUND.  
 2) BEARINGS SHOWN HEREON ARE BASED ON ILLINOIS STATE PLANE COORDINATE SYSTEM EAST ZONE, NAD 83, (2007).  
 3) THE COMBINATION FACTOR USED FOR THIS PROJECT = 0.99994777.

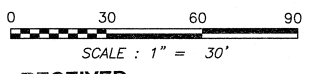
STATE OF ILLINOIS )  
 ) SS  
 COUNTY OF WILL )

THIS IS TO CERTIFY THAT WE, CLAASSEN, WHITE & ASSOCIATES, P.C., AN ILLINOIS PROFESSIONAL DESIGN FIRM LAND SURVEYING CORPORATION NUMBER 184-004039, HAVE SURVEYED THE PLAT OF HIGHWAYS SHOWN HEREON BETWEEN SECTION 21, 22, 15 AND 16, TOWNSHIP 38 NORTH, RANGE 9 EAST OF THE THIRD PRINCIPAL MERIDIAN, DUPAGE COUNTY, THAT THE SURVEY IS TRUE AND COMPLETE AS SHOWN TO THE BEST OF MY KNOWLEDGE AND BELIEF, THAT THE PLAT CORRECTLY REPRESENTS SAID SURVEY, THAT ALL MONUMENTS FOUND AND ESTABLISHED ARE OF PERMANENT QUALITY AND OCCUPY THE POSITIONS SHOWN THEREON AND THAT THE MONUMENTS ARE SUFFICIENT TO ENABLE THE SURVEY TO BE RETRACED. THIS SURVEY CONFORMS TO THE CURRENT ILLINOIS MINIMUM STANDARDS FOR A BOUNDARY SURVEY. MADE FOR THE DEPARTMENT OF TRANSPORTATION, STATE OF ILLINOIS.

DATED AT JOLIET, ILLINOIS THIS \_\_\_\_\_ DAY OF \_\_\_\_\_, 2011 A.D.

\_\_\_\_\_  
 VICE PRESIDENT

DAVID A. CLAASSEN  
 ILLINOIS PROFESSIONAL LAND SURVEYOR NO. 035-002962  
 LICENSE EXPIRES NOVEMBER 30, 2012  
 THIS PROFESSIONAL SERVICE CONFORMS TO THE  
 CURRENT ILLINOIS MINIMUM STANDARDS FOR A  
 BOUNDARY SURVEY.



RECEIVED  
 SEP 15 2011  
 PLATS & LEGALS

**Classten, White & Associates, P.C.**  
 121 AIRPORT DRIVE, UNIT 1  
 JOLIET, ILLINOIS 60431  
 (815) 744-3720

SHEET 1 IS A COVER SHEET AND NOT RECORDED.

**PLAT OF HIGHWAYS**  
**STATE OF ILLINOIS**  
**DEPARTMENT OF TRANSPORTATION**  
**F.A.P. 338 ILLINOIS ROUTE 59**

SECTION FERRY RD. TO AURORA AVE. DUPAGE COUNTY  
 PROJECT JOB NO. R-91-035-09  
 STATION 3931+50 TO STATION 3936+00  
 SCALE: 1" = 30' SHEET A10 OF ???

PARCEL NUMBER	OWNER	TOTAL HOLDING ACRES	PART TAKEN ACRES	REMAINDER ACRES	PREV. DED. ACRES	EASEMENT ACRES	EASEMENT PURPOSE	PERMANENT TAX INDEX NUMBER	PROPERTY ACQUIRED BY
1HJ0017	WONDORA, LLC, A NEW JERSEY LIMITED LIABILITY COMPANY	1.970	0.437	1.533		0.024	CONSTRUCTION	07-16-401-009	
1HJ0021	PORTILLO'S HOT DOGS, INC., A DELAWARE CORPORATION	1.872	0.157	1.715		0.017	CONSTRUCTION	07-15-305-001	
1HJ0021E-A						0.036	CONSTRUCTION		
1HJ0021E-B									