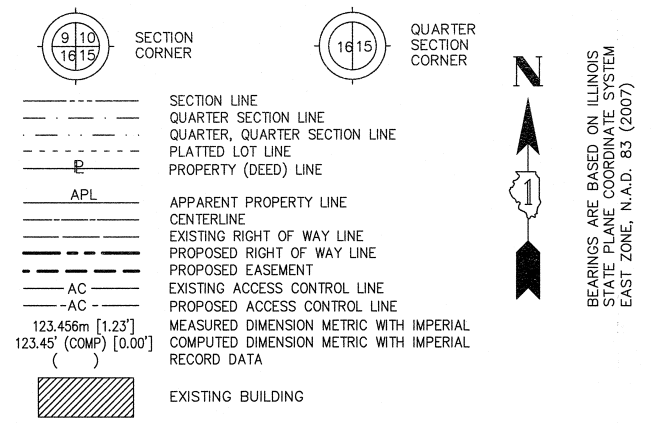
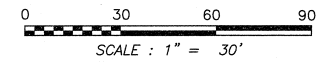


PART OF THE NW 1/4 SECTION 22, ALL IN T38N, R9E OF THE 3rd PM, NAPERVILLE TOWNSHIP, DUPAGE COUNTY, ILLINOIS.

LEGEND



BEARINGS ARE BASED ON ILLINOIS STATE PLANE COORDINATE SYSTEM EAST ZONE, N.A.D. 83 (2007)



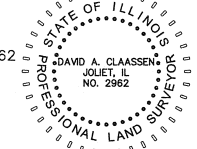
STATE OF ILLINOIS )  
COUNTY OF WILL )

THIS IS TO CERTIFY THAT WE, CLAASSEN, WHITE & ASSOCIATES, P.C., AN ILLINOIS PROFESSIONAL DESIGN FIRM LAND SURVEYING CORPORATION NUMBER 184-004039, HAVE SURVEYED THE PLAT OF HIGHWAYS SHOWN HEREON IN SECTION 22, TOWNSHIP 38 NORTH, RANGE 9 EAST OF THE THIRD PRINCIPAL MERIDIAN, DUPAGE COUNTY, THAT THE SURVEY IS TRUE AND COMPLETE AS SHOWN TO THE BEST OF MY KNOWLEDGE AND BELIEF, THAT THE PLAT CORRECTLY REPRESENTS SAID SURVEY, THAT ALL MONUMENTS FOUND AND ESTABLISHED ARE OF PERMANENT QUALITY AND OCCUPY THE POSITIONS SHOWN THEREON AND THAT THE MONUMENTS ARE SUFFICIENT TO ENABLE THE SURVEY TO BE RETRACED. THIS SURVEY CONFORMS TO THE CURRENT ILLINOIS MINIMUM STANDARDS FOR A BOUNDARY SURVEY. MADE FOR THE DEPARTMENT OF TRANSPORTATION, STATE OF ILLINOIS.

DATED AT JOLIET, ILLINOIS THIS \_\_\_\_\_ DAY OF \_\_\_\_\_, 2011 A.D.

DAVID A. CLAASSEN  
ILLINOIS PROFESSIONAL LAND SURVEYOR NO. 035-002962  
LICENSE EXPIRES NOVEMBER 30, 2012  
THIS PROFESSIONAL SERVICE CONFORMS TO THE CURRENT ILLINOIS MINIMUM STANDARDS FOR A BOUNDARY SURVEY.

DAVID A. CLAASSEN  
VICE PRESIDENT



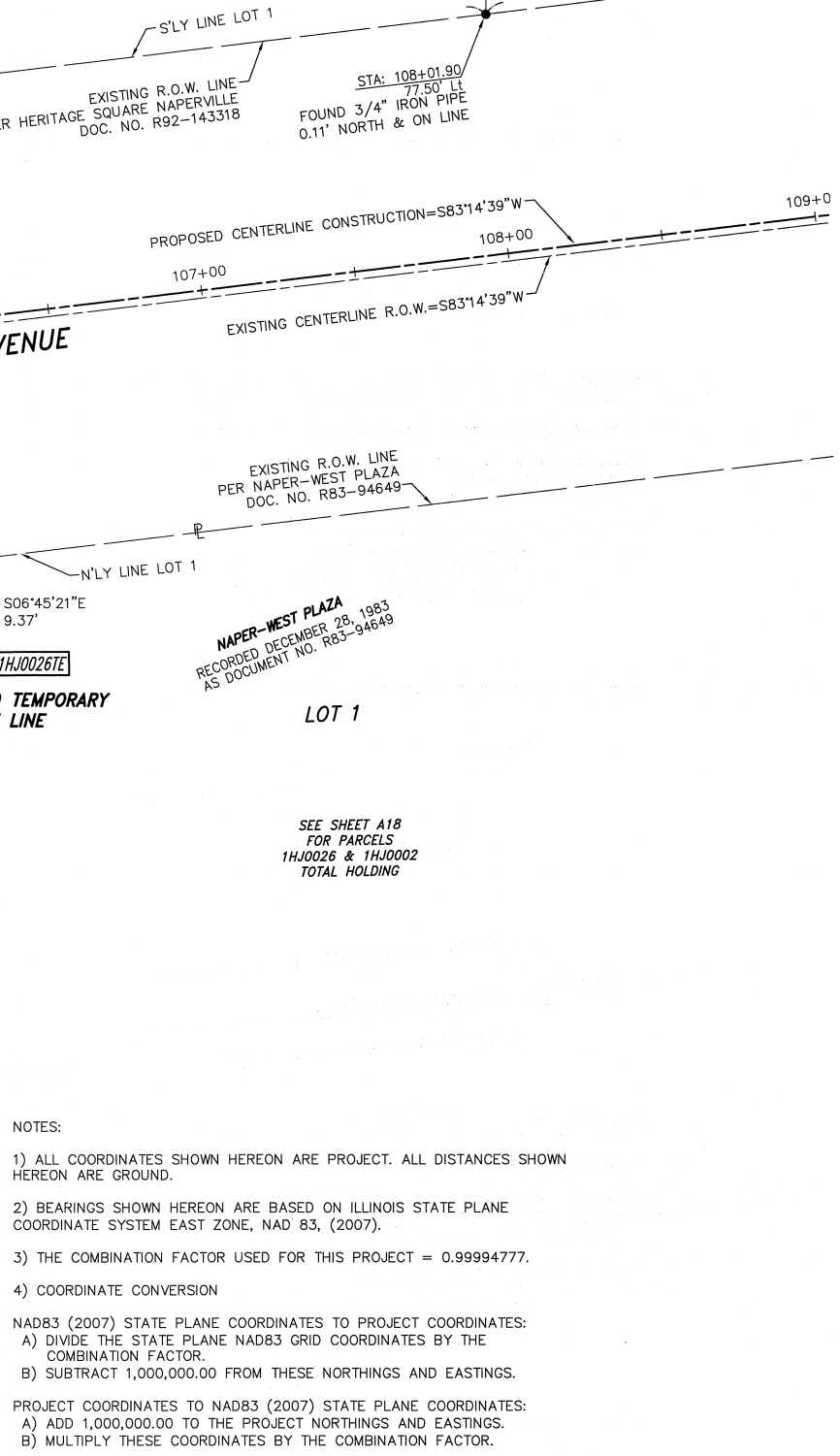
RECEIVED  
SEP 15 2011  
Plats & Legals  
Classten, White & Associates, P.C.  
121 AIRPORT DRIVE, UNIT 1  
JOLIET, ILLINOIS 60431  
(815) 744-3720

SHEET 1 IS A COVER SHEET AND NOT RECORDED.

PLAT OF HIGHWAYS  
STATE OF ILLINOIS  
DEPARTMENT OF TRANSPORTATION  
F.A.P. 338 ILLINOIS ROUTE 59

SECTION FERRY RD. TO AURORA AVE. DUPAGE COUNTY  
PROJECT JOB NO. R-91-035-09  
STATION 104+50 STATION 113+50  
SCALE: 1" = 30' SHEET A17 OF ???

BUREAU OF LAND ACQUISITION  
201 WEST CENTER COURT  
SCHAUMBURG, ILLINOIS 60196-1096



NOTES:

- ALL COORDINATES SHOWN HEREON ARE PROJECT. ALL DISTANCES SHOWN HEREON ARE GROUND.
- BEARINGS SHOWN HEREON ARE BASED ON ILLINOIS STATE PLANE COORDINATE SYSTEM EAST ZONE, NAD 83, (2007).
- THE COMBINATION FACTOR USED FOR THIS PROJECT = 0.99994777.
- COORDINATE CONVERSION

NAD83 (2007) STATE PLANE COORDINATES TO PROJECT COORDINATES:  
A) DIVIDE THE STATE PLANE NAD83 GRID COORDINATES BY THE COMBINATION FACTOR.  
B) SUBTRACT 1,000,000.00 FROM THESE NORTHINGS AND EASTINGS.

PROJECT COORDINATES TO NAD83 (2007) STATE PLANE COORDINATES:  
A) ADD 1,000,000.00 TO THE PROJECT NORTHINGS AND EASTINGS.  
B) MULTIPLY THESE COORDINATES BY THE COMBINATION FACTOR.

5) THE NGS MONUMENT HELD FOR THIS PROJECT IS FIRST ORDER P.I.D. AA3730.

NAD83 (2007) S.P.	PROJECT (GROUND)
N. 1,869,327.5048	N. 869,425.1449
E. 1,023,602.1293	E. 23,655.5948

PROJECT COORDINATES ARE SHOWN  
COORDINATE TABLE ~ AURORA AVENUE

NO.	STATION	OFFSET	--NORTH--COORDINATES--EAST--	
1159	105+41.13	115.50' RT.	N. 856,075.0950	E. 19,613.0501
752	105+44.66	87.25' RT.	N. 856,103.5613	E. 19,613.2372
710	105+45.88	77.50' RT.	N. 856,113.3905	E. 19,613.3018
1160	102+49.73	115.50' RT.	N. 856,040.8153	E. 19,323.6721
709	102+54.48	77.50' RT.	N. 856,079.1108	E. 19,323.9238
471	106+07.38	86.87' RT.	N. 856,111.3198	E. 19,675.4737
472	106+07.38	77.50' RT.	N. 856,120.6248	E. 19,674.3714

- SYMBOL LEGEND
- INLET
  - LIGHT POLE
  - POWER POLE
  - SIGN
  - MANHOLE
  - TRAFFIC SIGNAL HANDHOLE
  - ELECTRICAL OUTLET
  - IRRIGATION CONTROL VALVE
  - PHONE PEDESTAL
  - FIRE HYDRANT
  - VALVE BOX
  - VALVE VAULT
  - FLARED END SIGNAL
  - TRAFFIC SIGNAL
  - PHONE HANDHOLE
  - GAS VALVE
  - ELECTRIC VAULT
  - GAS HANDHOLE
  - GAS METER
  - IDOT JUNCTION BOX

SEE SHEET A4  
SEE SHEET A3

PARCEL NUMBER	OWNER	TOTAL HOLDING ACRES	PART TAKEN ACRES	REMAINDER ACRES	PREV. DED. ACRES	EASEMENT ACRES	EASEMENT PURPOSE	PERMANENT TAX INDEX NUMBER	PROPERTY ACQUIRED BY
1HJ0002	INLAND REAL ESTATE LB I LLC, A DELAWARE LIMITED LIABILITY COMPANY	15.051	0.101	14.950		0.056	CONSTRUCTION	07-22-303-004	
1HJ0002TE-A								07-22-303-010	
1HJ0002TE-B								07-22-303-011	
1HJ0010A	CENTRO NP HOLDINGS 6 SPE, LLC A DELAWARE LIMITED LIABILITY COMPANY	50.079	0.201	49.578		0.254	CONSTRUCTION	07-22-303-012	
1HJ0010B			0.041					07-22-101-005	
1HJ0010C			0.169					07-22-102-009	
1HJ0010D			0.090					07-22-102-010	
1HJ0026TE	KRCV CORP., A KANSAS CORPORATION	9.001		9.001		0.014	CONSTRUCTION	07-22-101-006	