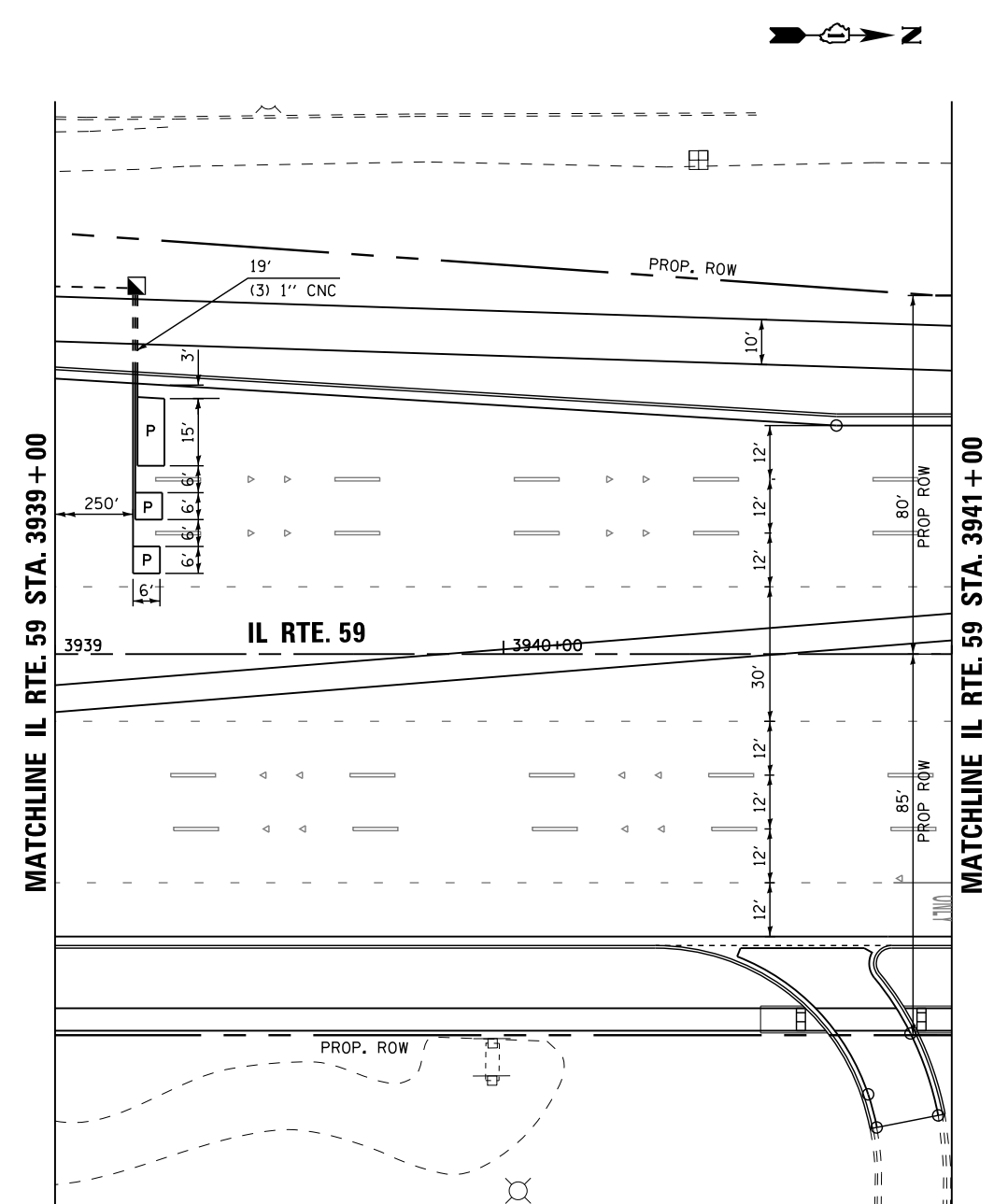


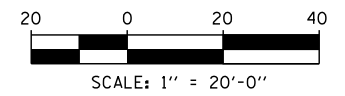
MATCHLINE IL RTE. 59 STA. 3933 + 00



MATCHLINE IL RTE. 59 STA. 3941 + 00

ALL LOOPS WITHIN LIMITS OF PCC ROADWAY RECONSTRUCTION SHALL BE PREFORMED TYPE

**RESTORATION OF WORK AREA.** RESTORATION OF THE TRAFFIC SIGNAL WORK AREA SHALL BE INCLUDED IN THE RELATED PAY ITEM SUCH AS FOUNDATION, CONDUIT, HANDHOLE, TRENCH AND BACKFILL, ETC., AND NO EXTRA COMPENSATION SHALL BE ALLOWED. ALL ROADWAY SURFACES SUCH AS SHOULDERS, MEDIAN, SIDEWALKS, PAVEMENT ETC. SHALL BE REPLACED IN KIND. ALL DAMAGE TO MOWED LAWNS SHALL BE REPLACED WITH AN APPROVED SOD, AND ALL DAMAGE TO UNMOWED FIELDS SHALL BE SEEDD IN ACCORDANCE WITH STANDARD SPECIFICATIONS 252 AND 250 RESPECTIVELY.



FILE NAME = K:\Projects\090059\Design\Sheet Files\6799rwa59proLJ2.dgn	USER NAME = \$USER\$	DESIGNED - DW	REVISED -	<b>STATE OF ILLINOIS DEPARTMENT OF TRANSPORTATION</b>	<b>TRAFFIC SIGNAL MODERNIZATION PLAN IL RTE 59 AT LIBERTY ST / JEFFERSON AVE</b>			F.A. RTE. 338	SECTION (112 & 113) WRS-7	COUNTY DUPAGE	TOTAL SHEETS 1156	SHEET NO. 627
PLOT SCALE = \$SCALE\$	CHECKED - KMM	REVISED -	REVISED -		SCALE: 1"=20'	SHEET NO. 2 OF 2 SHEETS	STA. TO STA.	<b>TS-35</b>		CONTRACT NO. 60R30		
PLOT DATE = 12/6/2012	DATE -	REVISED -	REVISED -		ILLINOIS FED. AID PROJECT							