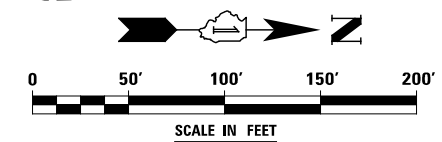
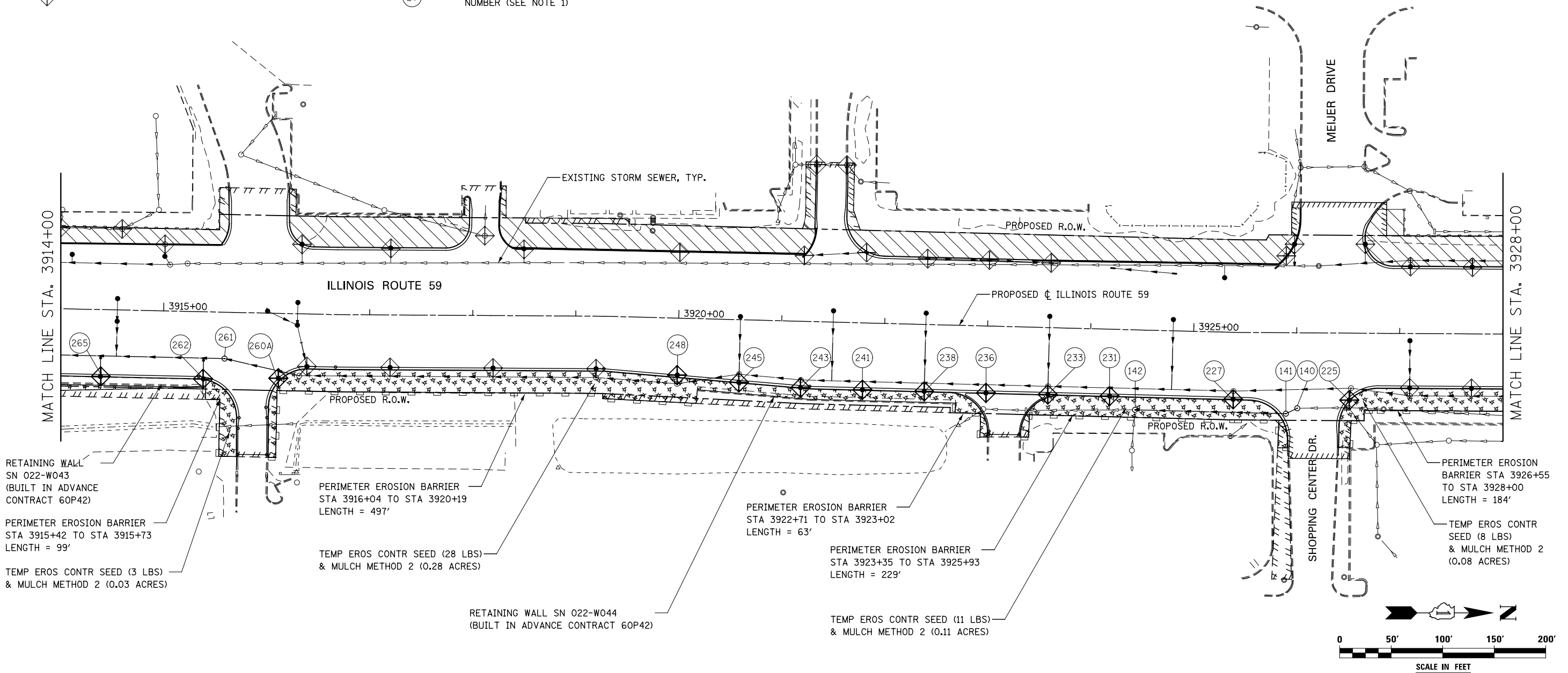


EROSION CONTROL LEGEND

	TEMPORARY EROSION CONTROL SEEDING AND MULCH METHOD 2		TEMPORARY DITCH CHECK
	TEMPORARY EROSION CONTROL SEEDING AND TEMPORARY EROSION CONTROL BLANKET		TEMPORARY DITCH CHECK INSTALLED IN PREVIOUS STAGE
	PERMANENT SEEDING (SEE NOTE 3)		INLET & PIPE PROTECTION
	TEMPORARY EROSION CONTROL SEEDING OR PERMANENT SEEDING INSTALLED IN A PREVIOUS STAGE		INLET & PIPE PROTECTION INSTALLED IN PREVIOUS STAGE
	TEMPORARY PAVEMENT		FLOW DIRECTION (SEE NOTE 4)
	PERIMETER EROSION BARRIER (SEE NOTE 2)		PROPOSED STORM SEWER (SEE NOTE 1)
	PERIMETER EROSION BARRIER INSTALLED IN PREVIOUS STAGE		PROPOSED STORM SEWER INSTALLED IN PREVIOUS STAGE
	INLET FILTER		TEMPORARY PIPE CULVERT
	INLET FILTER INSTALLED IN PREVIOUS STAGE		PERMANENT DRAINAGE STRUCTURE NUMBER (SEE NOTE 1)

NOTES

1. SEE PROPOSED DRAINAGE PLANS FOR STORM SEWER INFORMATION.
2. PERIMETER EROSION BARRIER SHALL BE ERECTED ADJACENT TO R.O.W., EASEMENT, AND CONSTRUCTION LIMITS AND AS DIRECTED BY THE ENGINEER.
3. SEE LANDSCAPING PLANS FOR LANDSCAPING REQUIREMENTS.
4. SEE STAGE 3 CROSS SECTIONS FOR GRADING INFORMATION.



RETAINING WALL SN 022-W043 (BUILT IN ADVANCE CONTRACT 60P42)

PERIMETER EROSION BARRIER STA 3915+42 TO STA 3915+73 LENGTH = 99'

TEMP EROS CONTR SEED (3 LBS) & MULCH METHOD 2 (0.03 ACRES)

PERIMETER EROSION BARRIER STA 3916+04 TO STA 3920+19 LENGTH = 497'

TEMP EROS CONTR SEED (28 LBS) & MULCH METHOD 2 (0.28 ACRES)

RETAINING WALL SN 022-W044 (BUILT IN ADVANCE CONTRACT 60P42)

PERIMETER EROSION BARRIER STA 3922+71 TO STA 3923+02 LENGTH = 63'

PERIMETER EROSION BARRIER STA 3923+35 TO STA 3925+93 LENGTH = 229'

TEMP EROS CONTR SEED (11 LBS) & MULCH METHOD 2 (0.11 ACRES)

PERIMETER EROSION BARRIER STA 3926+55 TO STA 3928+00 LENGTH = 184'

TEMP EROS CONTR SEED (8 LBS) & MULCH METHOD 2 (0.08 ACRES)

DESIGNED	PJO	REVISED	-
DRAWN	KES	REVISED	-
CHECKED	JCM	REVISED	-
DATE	12/14/2012	REVISED	-

**STATE OF ILLINOIS
DEPARTMENT OF TRANSPORTATION**

**EROSION CONTROL - STAGE 3, 3A AND 3B
ILLINOIS ROUTE 59**

SCALE: AS SHOWN | SHEET NO. 44 OF 70 SHEETS | STA. 3914+00 TO STA. 3928+00

F.A.P. RTE.	SECTION	COUNTY	TOTAL SHEETS	SHEET NO.
338	(112 & 113) WRS-7	DUPAGE	1156	734
CONTRACT NO. 60R30				
ILLINOIS FED. AID PROJECT				