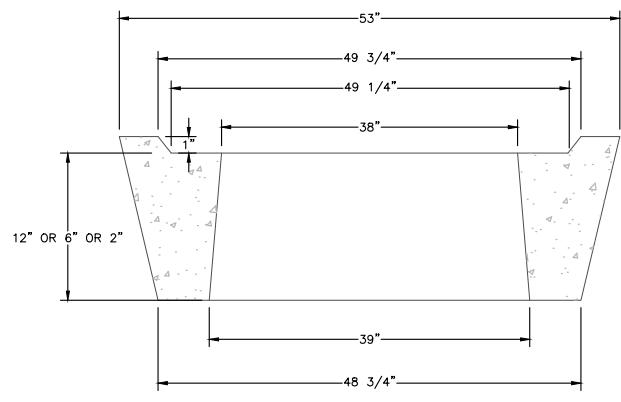
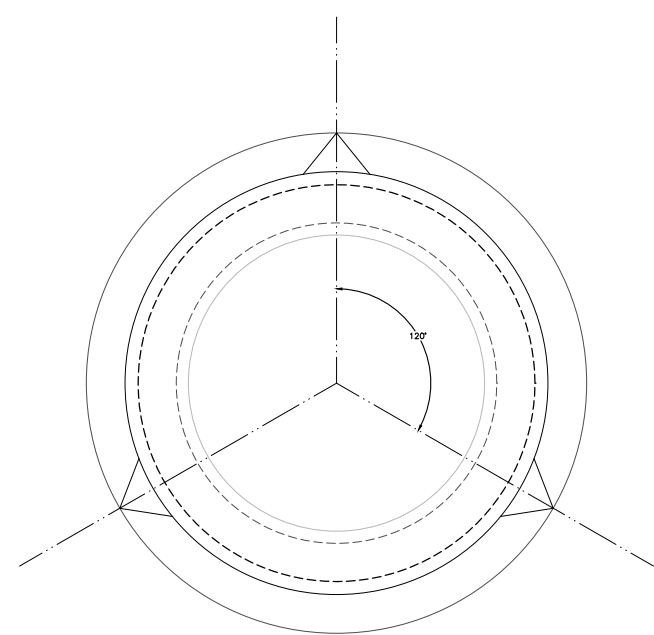


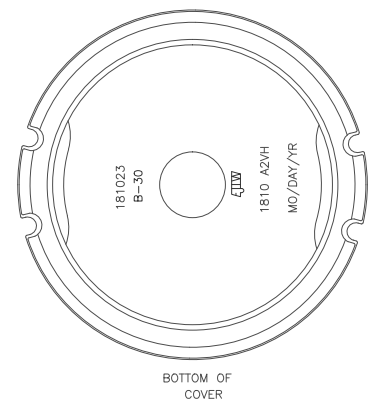
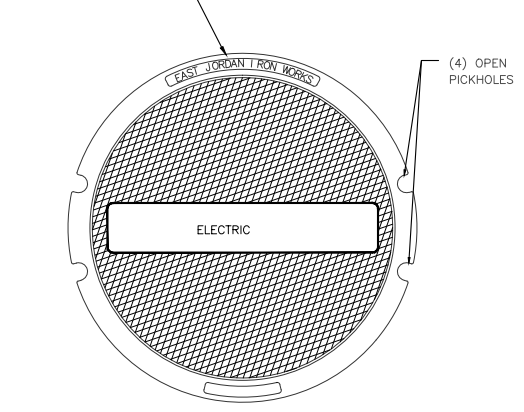
F.A.P. RTE.	SECTION	COUNTY	TOTAL SHEETS	SHEET NO.
338/IL 59	2011-035	DUPAGE		
FED.ROAD.DIST.NO.		ILLINOIS	CONTRACT 60P42	
		FED. AID PROJECT		



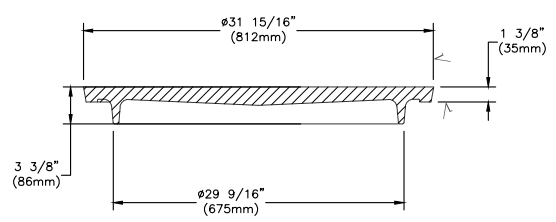
- NOTES:
1. CONCRETE 4500 PSI AT 28 DAYS
 2. EACH ADJUSTING RING SHALL COME WITH 14 FEET OF 1" INCH DIAMETER JOINT SEALANT TAPE.

**MANHOLE
ADJUSTING RING**

2" (51mm) LETTERS
(RECESSED FLUSH)



BOTTOM OF COVER

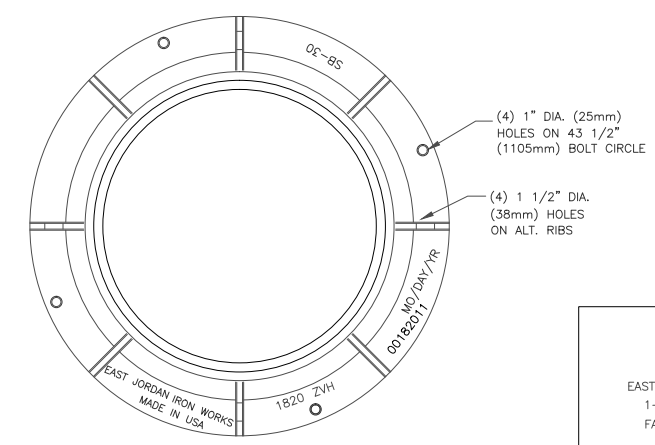


EAST JORDAN
IRON WORKS, INC.
P.O. BOX 439
EAST JORDAN, MI. 49727
1-800-874-4100
FAX 231-536-4458

EST. WT.
COVER: 295 LBS 134kg

✓ MACHINED SURFACE

COVER SECTION

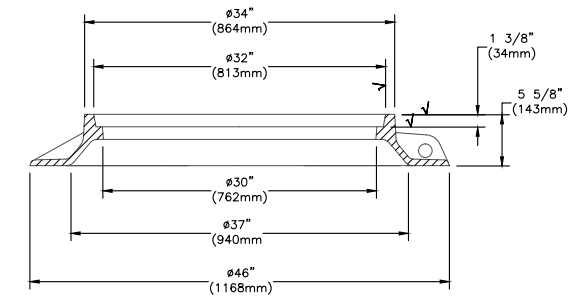


(4) 1" DIA. (25mm)
HOLES ON 43 1/2"
(1105mm) BOLT CIRCLE

(4) 1 1/2" DIA.
(38mm) HOLES
ON ALT. RIBS

EAST JORDAN
IRON WORKS, INC.
P.O. BOX 439
EAST JORDAN, MI. 49727
1-800-874-4100
FAX 231-536-4458

EST. WT.
FRAME: 295 LBS 134kg



✓ MACHINED SURFACE

FRAME SECTION

- NOTES:
- 1) CONTRACTOR IS ADVISED THE MANHOLE AS SUPPLIED FROM UTILITY CONCRETE PRODUCTS (UCP). IS SHIPPED WITH 4-12" ADJUSTING RING ONLY.
 - 2) CONTRACTOR IS ADVISED THAT 2" AND 6" ADJUSTING RINGS ARE AVAILABLE FROM THE CITY, IF REQUESTED BY THE CONTRACTOR. CONTRACTOR TO PICK UP AND IS INCIDENTAL TO THE CONTRACT.
 - 3) COVERS AND FRAME SECTIONS ARE TO BE PICKED UP AT THE CITY STORAGE YARD AND IS INCIDENTAL TO THE CONTRACT.

PROJECT TITLE					ROUTE 59 ROAD IMPROVEMENTS				
PROJECT DESCRIPTION					DETAILS AND STANDARDS				
ENGINEER	BCC	DRAFTING DATE	8-04-12	MAP #	4211,4224	SCALE	N.T.S.		
GIS DESIGN BY	DL	DRAFTED BY	PSM	REVISIONS DATE	N/A	PROJECT #	EU-12		
CHECKED BY		APPROVED BY		CAD FILE	0061123001D14.DWG	SHEET #	14 OF 40		
Naperville					Department of Public Utilities Electric Division				
					WORK REQUEST # 61123				