

Bench Mark: Cross "+" on top of north end of headwall, 50' north of centerline of Phoenix Closures driveway, east side of IL Route 59, Sta. 3958+37, 42' Right, Elev. 696.41

Existing Structure: S.N. 022-0038 originally built in 1935 as a single span bridge. In 1983 the structure was lengthened. The original east abutment was replaced with a pier and a second span was added to the east as part of Section 1977-215-BR. The bridge's steel beams were last painted under Contract 60F01 in 2009. The structure consists of two steel beam simple spans of 46'-2 1/2" and 42'-7 1/2". The substructure consists of closed abutments and a solid reinforced concrete pier supported on piles. The structure is 96'-11" from bk. to bk. of abutments and 43'-0" wide.

Traffic on roadway shall be stage constructed.

No salvage.

DESIGN SPECIFICATIONS

AREMA 2011

LOADING

Cooper E80 Plus Impact for Equipment without Hammer Blow

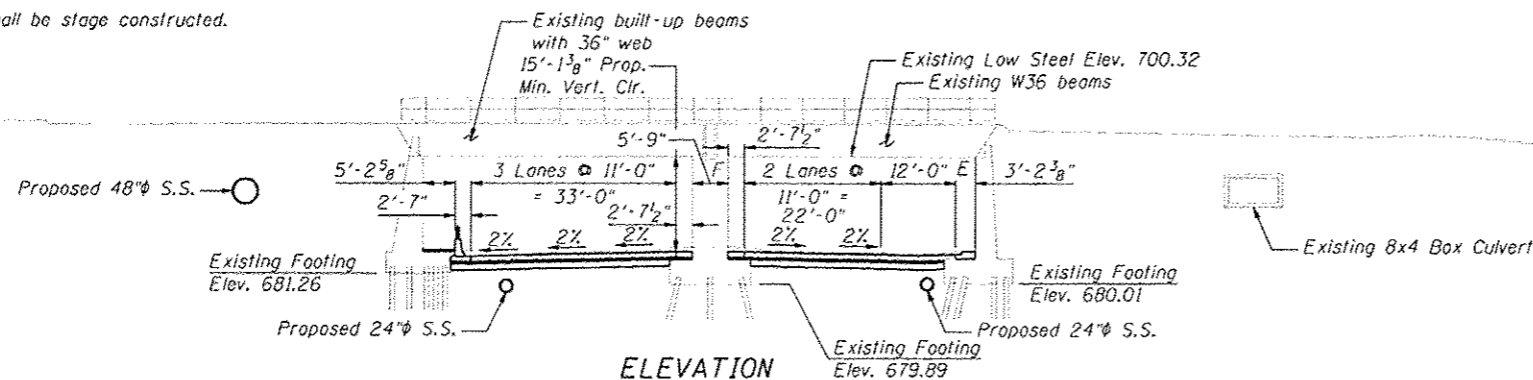
DESIGN STRESSES

EXISTING STRUCTURE

$f_s = 3,500$ psi
 $f_y = 60,000$ psi (reinforcement)
 $f_c = 20,000$ psi (Structural Carbon Steel)

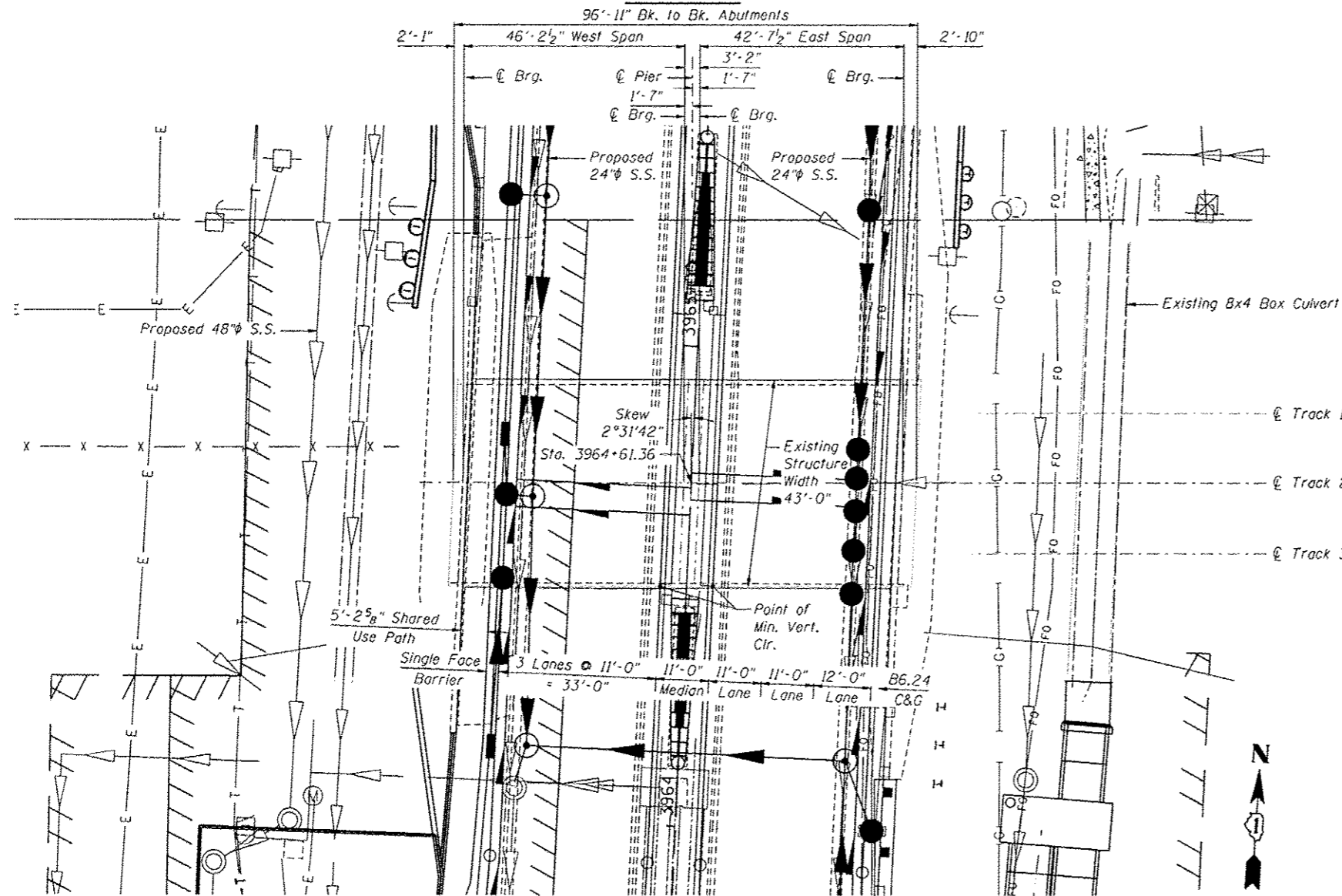
GENERAL NOTES

- Plan dimensions and details relative to existing plans are subject to nominal construction variations. The Contractor shall field verify existing dimensions and details affecting new construction and make necessary approved adjustments prior to construction or ordering of materials. Such variations shall not be cause for additional compensation for a change in scope of the work, however, the Contractor will be paid for the quantity actually furnished at the unit price bid for the work.
- The existing structural steel coating contains lead. The Contractor shall take appropriate precautions to deal with the presence of lead on this project.

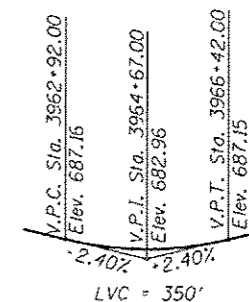


TOTAL BILL OF MATERIAL

ITEM	UNIT	QUANTITY
Epoxy Crack Injection	Foot	134
Structural Repair of Concrete (Depth < 5")	Sq. Ft.	20
Cleaning Bridge Seats	Sq. Ft.	562
Cleaning and Painting Exposed Rebar	Sq. Ft.	3

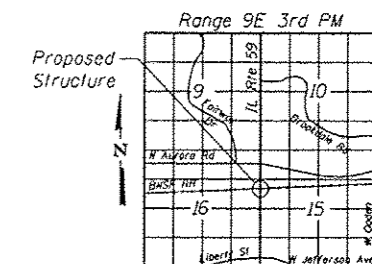


Signature: *Deborah A. Zook* Date: 12-14-12
 November 30, 2014 Expires



PROFILE GRADE

(along inside edge of pavement, proposed IL Route 59)



LOCATION SKETCH

INDEX OF SHEETS

- SC-1. General Plan
- SC-2. Superstructure Repairs
- SC-3. West Abutment Repairs
- SC-4. Pier Repairs
- SC-5. East Abutment Repairs

GENERAL PLAN
BNSF RAILROAD OVER IL RTE 59
FAP RTE 338
SECTION (112 & 113) WRS-7
DUPAGE COUNTY
STA. 3964+61.36
SN 022-0038

ZROKA engineering
 Zroka Engineering, P.C.
 4216 North Hermitage
 Chicago, IL 60613

DESIGNED - LAS	REVISED -
CHECKED - DAZ	REVISED -
DRAWN - SAW	REVISED -
CHECKED - LAS	REVISED -

SCALE - NONE
 DATE - 12/14/2012

STATE OF ILLINOIS
 DEPARTMENT OF TRANSPORTATION

GENERAL PLAN & ELEVATION
 STA. 3964+61.36 S.N. 022-0038

SHEET NO. SC-1 OF SC-5 SHEETS

F.A.P. RTE.	SECTION	COUNTY	TOTAL SHEETS	SHEET NO.
338	(112 & 113) WRS-7	DUPAGE	156	142
			CONTRACT NO. 60R30	

ILLINOIS FED. AID PROJECT