

Bench Mark: Square "□" cut in base of southern most light pole in parking lot at #177B IL Route 59, Sta. 3966+94, 155' Right, Elev. 701.63

Existing Structure: None

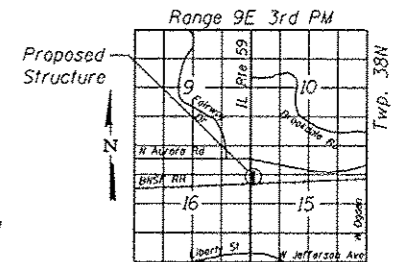
Notes:
Offsets are measured from the $\text{\textcircled{C}}$ Proposed IL Rte 59 to the front face of the wall. Front Face of wall does not include architectural finish. See Section on Sheets SA-4 and SA-5.

For Index of Sheets, General Notes, Design Specifications, PGL Information, and Total Bill of Material, see Sheet SA-2 of SA-12.

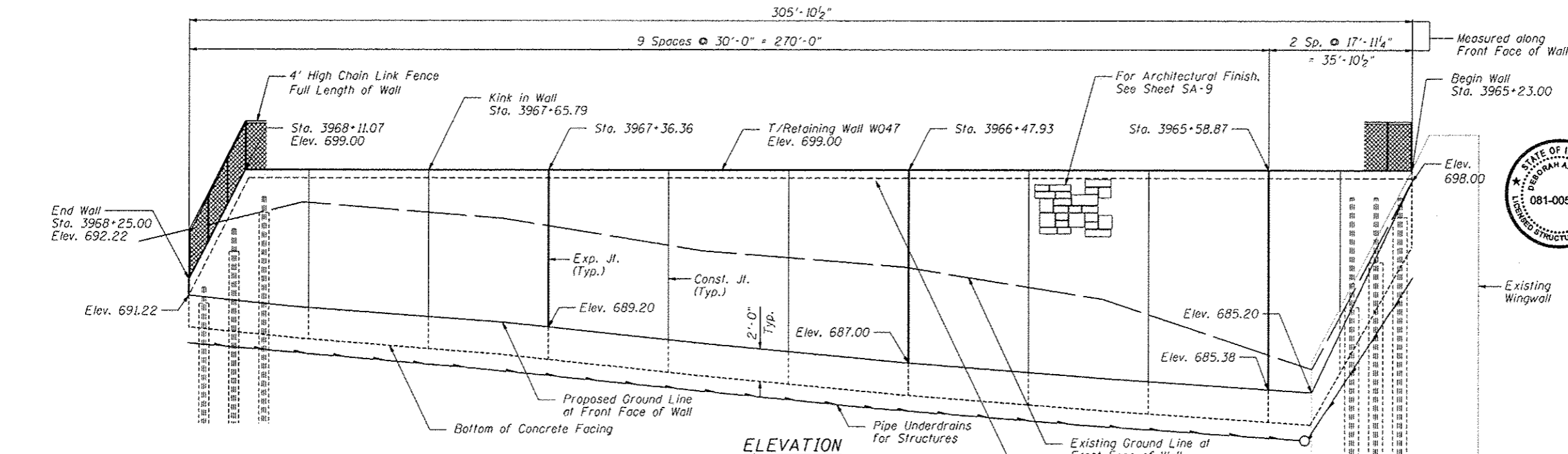
Notes:
For Section A-A, see Sheet SA-5 of SA-12.

Soldier piles not shown for clarity.

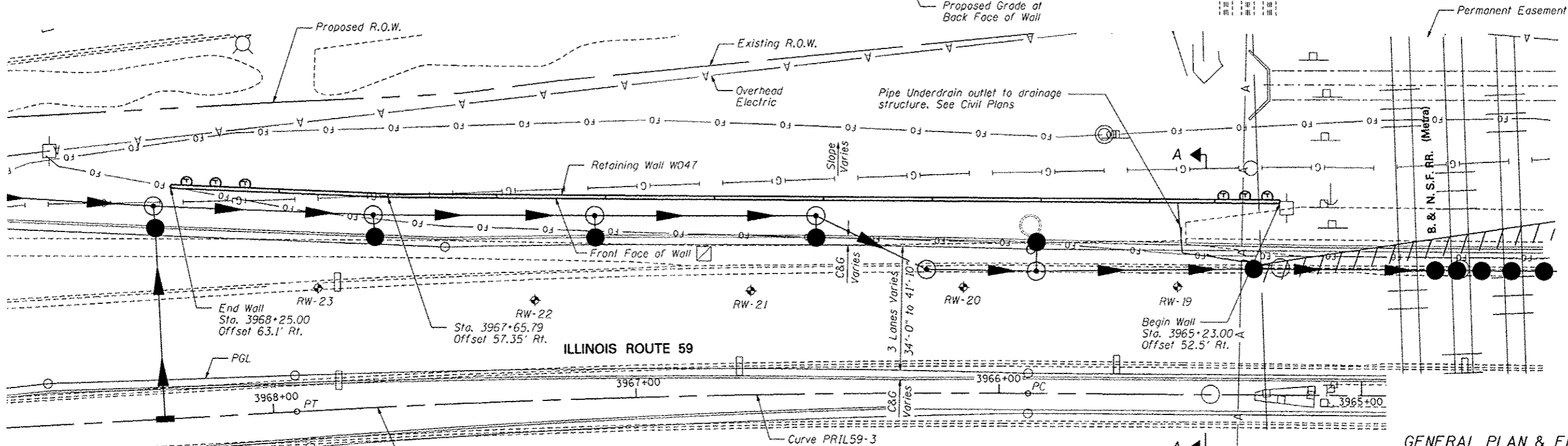
Buried utilities that cross SN 022-W047 will be relocated by others.



LOCATION SKETCH



ELEVATION



PLAN



Signature: *Deborah A. Zroma* 12-14-12
Date: November 30, 2014
Expires:

APPROVED
For Structural Adequacy Only
D. Carl Purney
Engineer of Bridges & Structures

Overhead electric line will be live during construction. Piles in this area may need to be spliced. Pile splices required due to these live electric lines shall not be paid for separately but shall be included in the cost of Furnishing Soldier Piles

GENERAL PLAN & ELEVATION
IL RTE 59 FAP RTE 338
SECTION (112 & 113) WRS-7
DUPAGE COUNTY
STA. 3965+23.00 TO STA. 3968+25.00
SN 022-W047

ZROKA engineering
Zroka Engineering, P.C.
4216 North Hermitage
Chicago, IL 60613

DESIGNED - LAS	REvised -
CHECKED - DAZ	REvised -
DRAWN - SAW	REvised -
CHECKED - LAS	REvised -

STATE OF ILLINOIS
DEPARTMENT OF TRANSPORTATION

GENERAL PLAN & ELEVATION
STA. 3965+23.00 TO STA. 3968+25.00 SN 022-W047

F.A.P. RTE.	SECTION	COUNTY	TOTAL SHEETS	SHEET NO.
338	(112 & 113) WRS-7	DUPAGE	1156	827
CONTRACT NO. 60R30			ILLINOIS FED. AID PROJECT	

SHEET NO. SA-1 OF SA-13 SHEETS