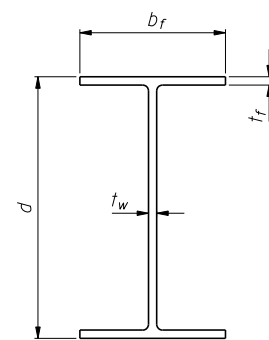
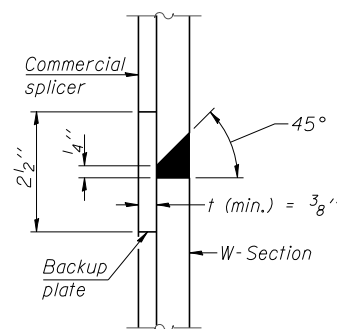


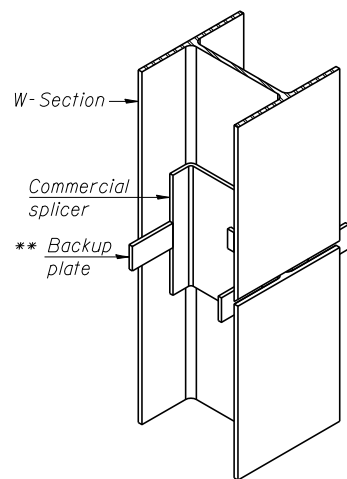
ELEVATION



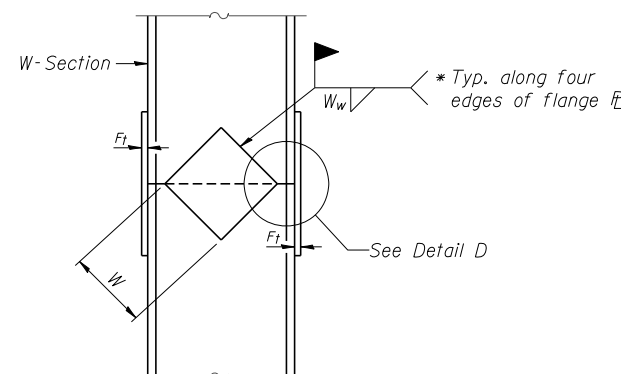
Designation	Depth d	Flange width b _f	Flange thickness t _f	Web thickness t _w	Encasement diameter A
W33x141	33 3/4"	11 1/2"	1 5/16"	5 5/8"	42"



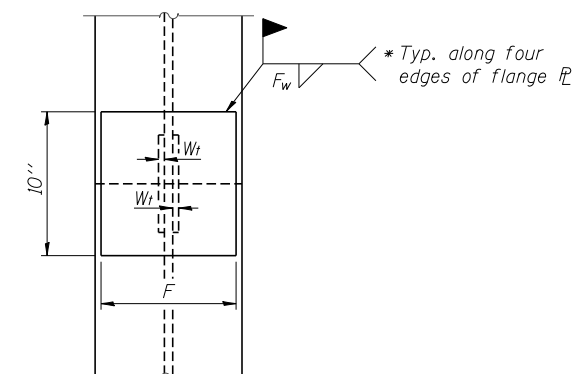
DETAIL "B"



ISOMETRIC VIEW

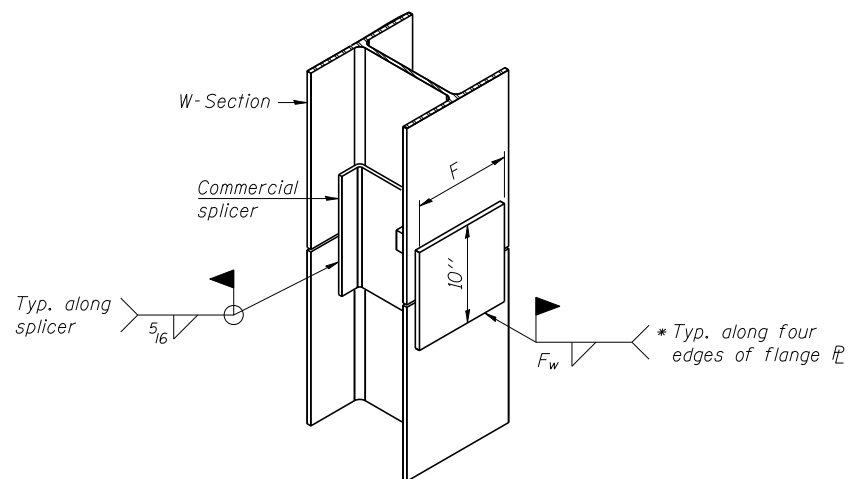


ELEVATION

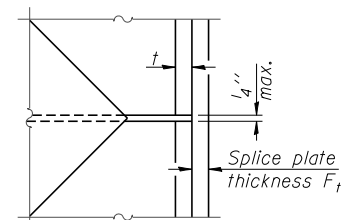


END VIEW

WELDED COMMERCIAL SPLICE



ISOMETRIC VIEW



DETAIL D

Designation	F	F _t	F _w	W	W _t	W _w
W33x141	9"	1 1/4"	1"	21"	5 5/8"	1/2"

WELDED PLATE FIELD SPLICE

WELDED COMMERCIAL SPLICE ALTERNATE

- * Interrupt welds 1/4" from end of web and/or each flange.
- ** Remove portions of backup plates that extend outside the flanges.

Note:
The steel W-Sections shall be according to AASHTO M270 Grade 36.

FILE NAME = ...60R30-W047-011-PileSpliceDetails.dgn



Zroka Engineering, P.C.
4216 North Hermitage
Chicago, IL 60613

DESIGNED - LAS	REVISED -
CHECKED - DAZ	REVISED -
DRAWN - SAW	REVISED -
CHECKED - LAS	REVISED -

STATE OF ILLINOIS
DEPARTMENT OF TRANSPORTATION

PILE SPLICE DETAILS
STA. 3965 + 23.00 TO STA. 3968 + 25.00 SN 022-W047

SHEET NO. SA-11 OF SA-13 SHEETS

F.A.P. RTE.	SECTION	COUNTY	TOTAL SHEETS	SHEET NO.
338	(112 & 113) WRS-7	DUPAGE	1156	857
				CONTRACT NO. 60R30

ILLINOIS FED. AID PROJECT