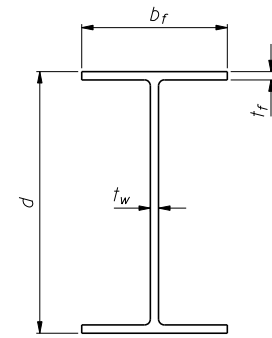
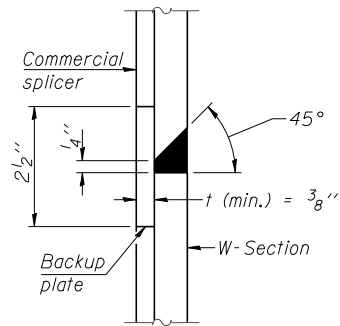


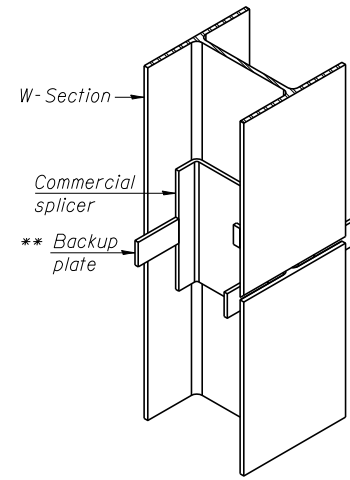
ELEVATION



Designation	Depth d	Flange width b_f	Flange thickness t_f	Web thickness t_w	Encasement diameter A
W33x141	33 $\frac{1}{4}$ "	11 $\frac{1}{2}$ "	$\frac{15}{16}$ "	$\frac{5}{8}$ "	42"

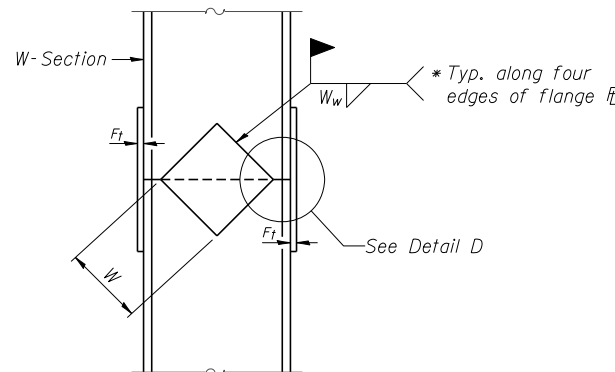


DETAIL "B"

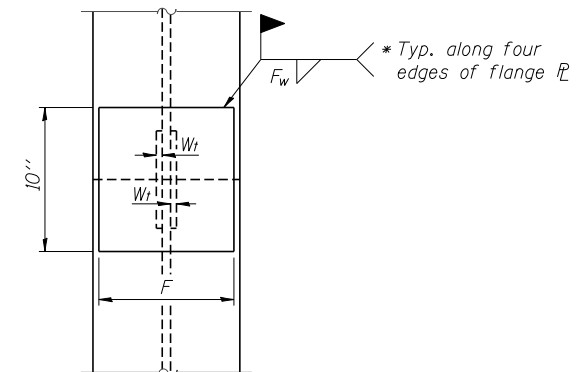


ISOMETRIC VIEW

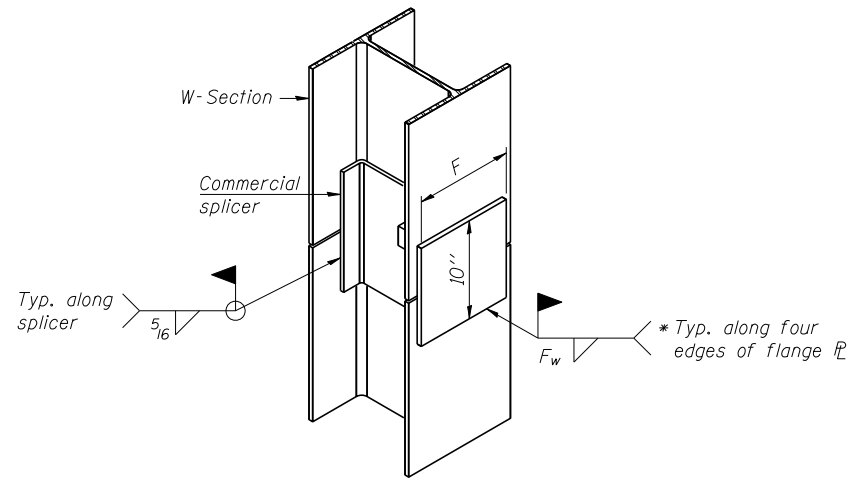
WELDED COMMERCIAL SPLICE



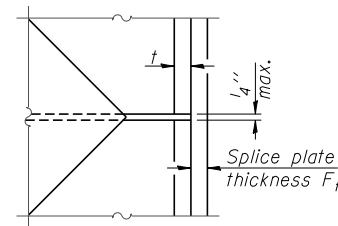
ELEVATION



END VIEW



ISOMETRIC VIEW



DETAIL D

Designation	F	F_t	F_w	W	W_t	W_w
W33x141	9"	1 $\frac{1}{4}$ "	1"	21"	$\frac{5}{8}$ "	$\frac{1}{2}$ "

WELDED PLATE FIELD SPLICE

WELDED COMMERCIAL SPLICE ALTERNATE

- * Interrupt welds $\frac{1}{4}$ " from end of web and/or each flange.
- ** Remove portions of backup plates that extend outside the flanges.

Note:
The steel W-Sections shall be according to AASHTO M270 Grade 36.

FILE NAME = ...60R30-W061-014-PileSplice.dgn



Zroka Engineering, P.C.
4216 North Hermitage
Chicago, IL 60613

DESIGNED - LAS	REVISED -
CHECKED - DAZ	REVISED -
DRAWN - SAW	REVISED -
CHECKED - LAS	REVISED -

STATE OF ILLINOIS
DEPARTMENT OF TRANSPORTATION

PILE SPLICE DETAILS
STA. 3959 + 30.00 TO STA. 3964 + 32.50 SN 022-W061

SHEET NO. SB-14 OF SB-17 SHEETS

F.A.P. RTE.	SECTION	COUNTY	TOTAL SHEETS	SHEET NO.
338	(112 & 113) WRS-7	DUPAGE	1156	873
				CONTRACT NO. 60R30

ILLINOIS FED. AID PROJECT