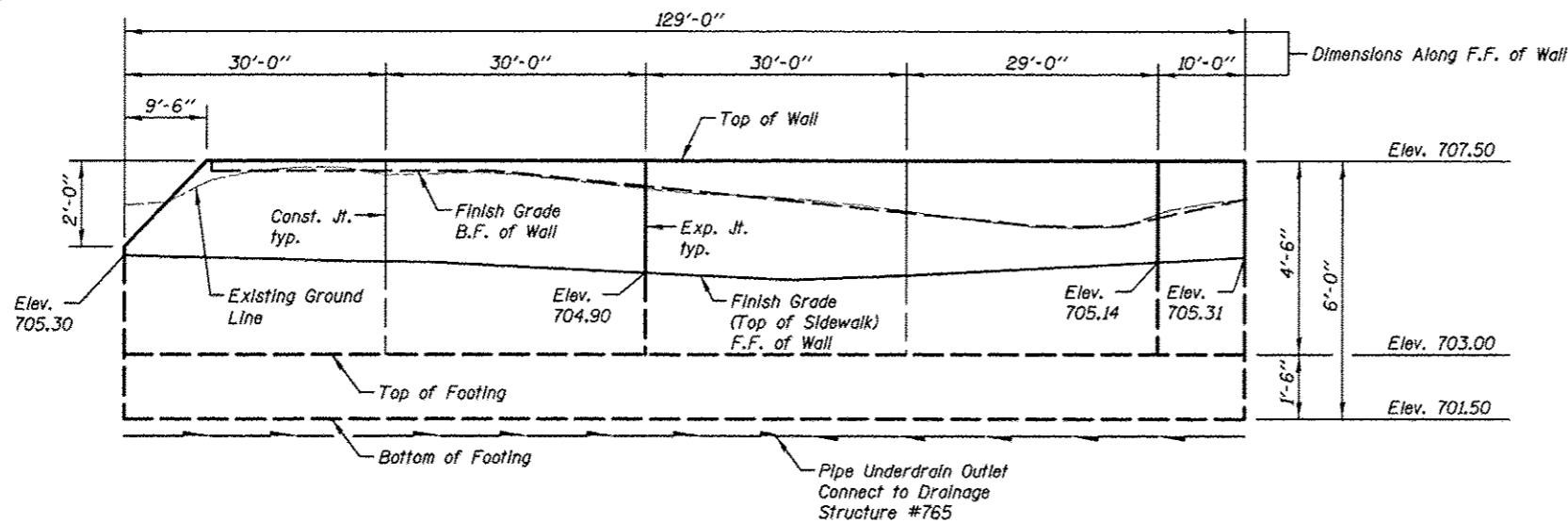


Bench Mark: BM #211 3977+40, 129 RT
 Square "□" out in south side of light pole base. Just south of CVS Drug Store Sign
 northeast corner of Route 59 and North Aurora Road.
 ELEV. 707.30

Existing Structure: None.



ELEVATION

TOTAL BILL OF MATERIAL

ITEM	UNIT	TOTAL
Subbase Granular Material, Type B 4"	Sq. Yd.	60
Structure Excavation	Cu. Yd.	215
Concrete Structures	Cu. Yd.	60
Reinforcement Bars, Epoxy Coated	Pound	14500
Concrete Sealer	Sq. Ft.	484
Geocomposite Wall Drain	Sq. Yd.	710
Pipe Underdrains for Structures 4"	Foot	129

CURVE DATA

☉ North Aurora Rd.
 Curve PR-MA-1
 $\Delta = 10^\circ 53' 54''$ (RT)
 $D = 2^\circ 29' 59''$
 $R = 2,292.00'$
 $T = 218.64'$
 $L = 435.96'$
 $E = 10.40'$
 SE = Normal Crown
 PC STA. 398+44.84
 PT STA. 402+80.81
 PI STA. 400+63.49

DESIGN SPECIFICATIONS

2012 AASHTO LRFD Bridge Design Specifications
 6th Edition, with 2012 Interim Revisions

DESIGN STRESSES

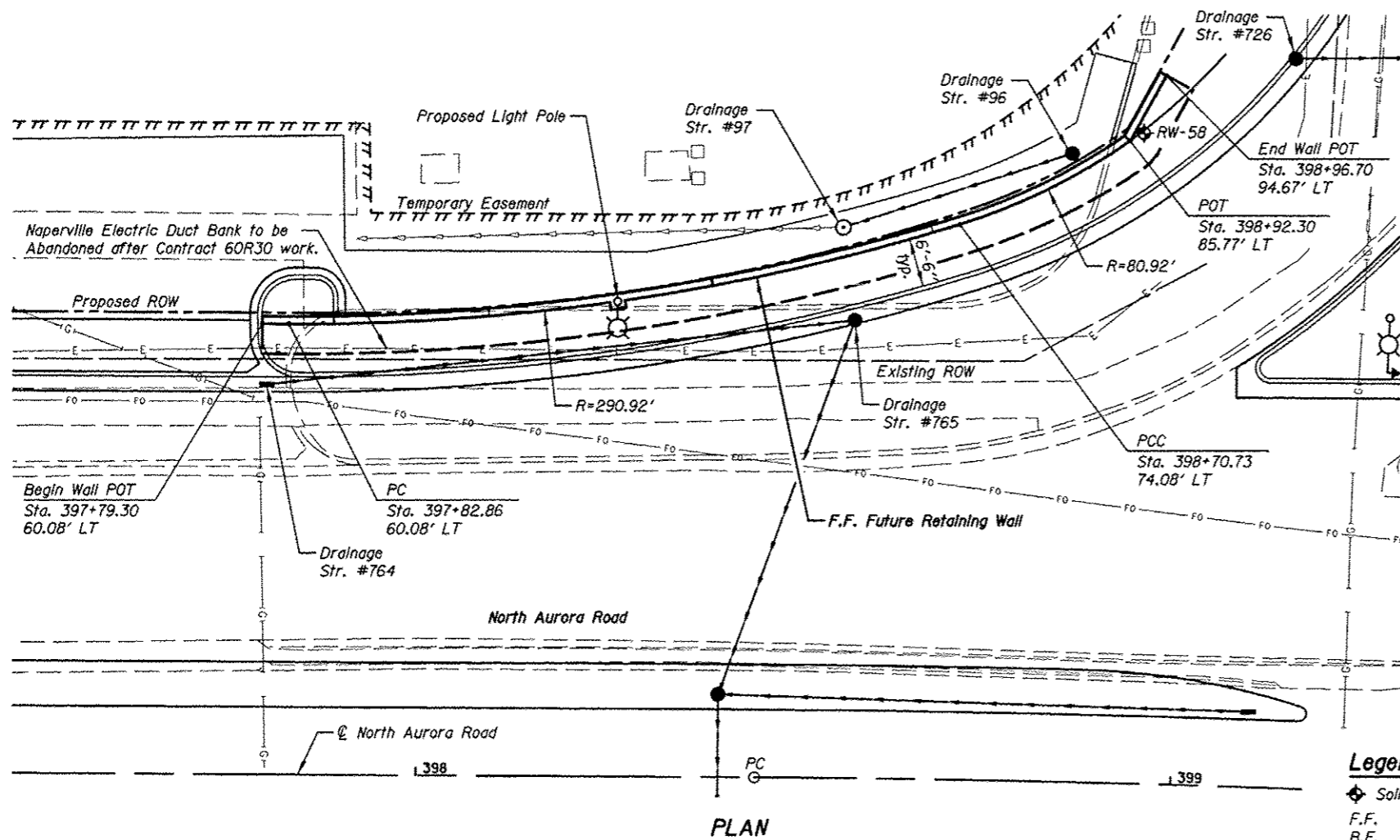
FIELD UNITS

$f'_c = 3,500$ psi
 $f_y = 60,000$ psi (reinforcement)

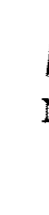
Notes

The location of this wall is less than 1' from ROW. The wall will be built to the radius shown and not kinked. No exceptions.

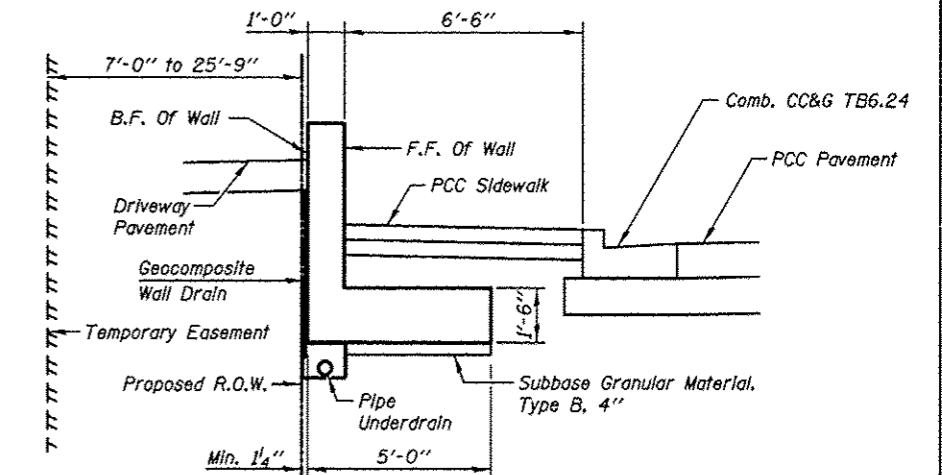
See Roadway Drainage Plans for Drainage Structure Locations.



PLAN



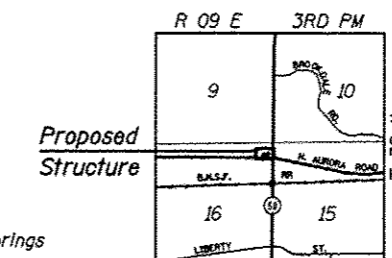
Illinois Route 59



TYPICAL SECTION

THIS SHEET IS FOR INFORMATION ONLY. Quantities shown are estimated and NOT included in the Summary of Quantities.

**GENERAL PLAN AND ELEVATION
 ILLINOIS ROUTE 59 F.A.P. RTE. 338
 SEC. (112 & 113) WRS-7
 DUPAGE COUNTY
 STA. 397+79 TO STA. 398+97
 FUTURE RETAINING WALL**



LOCATION SKETCH

KNIGHT Engineers & Architects	DESIGNED - WPM	REVISOR	2/11/2013	WPM	STATE OF ILLINOIS DEPARTMENT OF TRANSPORTATION	GENERAL PLAN AND ELEVATION FUTURE RETAINING WALL	F.A.P. RTE.	SECTION	COUNTY	TOTAL SHEETS	SHEET NO.
	CHECKED - TB	REVISOR					338	(112 & 113) WRS-7	DUPAGE	1156	876A
SCALE - NONE	DRAWN - TB	REVISOR			SHEET NO. SC-1 OF 1 SHEETS	CONTRACT NO. 60R30	ILLINOIS FED. AID PROJECT				
DATE - 12/14/2012	CHECKED - WPM	REVISOR									