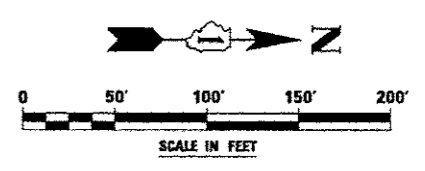


**MOT PAVEMENT MARKING LEGEND**

- (A) TEMPORARY PAVEMENT MARKING - LINE 4", SOLID WHITE
- (B) TEMPORARY PAVEMENT MARKING - LINE 4", WHITE SKIP-DASH (10' LINE - 30' SPACE)
- (C) TEMPORARY PAVEMENT MARKING - LINE 4", SOLID YELLOW
- (D) TEMPORARY PAVEMENT MARKING - LINE 4", DOUBLE YELLOW SPACED AT 11" C-C WITH TEMPORARY RAISED REFLECTIVE PAVEMENT MARKERS SPACED 40' C-C (BI-DIRECTIONAL AMBER)
- (E) TEMPORARY PAVEMENT MARKING - LINE 6", SOLID WHITE
- (F) TEMPORARY PAVEMENT MARKING - LINE 6", WHITE DOTTED (2' LINE - 6' SPACE) (UNLESS OTHERWISE NOTED)
- (G) TEMPORARY PAVEMENT MARKING - LINE 12", SOLID YELLOW
- (H) TEMPORARY PAVEMENT MARKING - LINE 24", SOLID WHITE
- (I) TEMPORARY PAVEMENT MARKING, LETTERS & SYMBOLS
- (J) WET REFLECTIVE TEMPORARY TAPE, TYPE III, 4", SOLID WHITE
- (K) WET REFLECTIVE TEMPORARY TAPE, TYPE III, 4", WHITE SKIP-DASH (10' LINE - 30' SPACE)
- (L) WET REFLECTIVE TEMPORARY TAPE, TYPE III, 4", SOLID YELLOW
- (M) WET REFLECTIVE TEMPORARY TAPE, TYPE III, 4", DOUBLE YELLOW SPACED AT 11" C-C WITH TEMPORARY RAISED REFLECTIVE PAVEMENT MARKERS SPACED 40' C-C (BI-DIRECTIONAL AMBER)
- (N) WET REFLECTIVE TEMPORARY TAPE, TYPE III, 6", SOLID WHITE
- (O) WET REFLECTIVE TEMPORARY TAPE, TYPE III, 6", WHITE DOTTED (2' LINE - 6' SPACE) (UNLESS OTHERWISE NOTED)
- (P) WET REFLECTIVE TEMPORARY TAPE, TYPE III, 12", SOLID YELLOW
- (R) WET REFLECTIVE TEMPORARY TAPE, TYPE III, 24", SOLID WHITE
- (S) WET REFLECTIVE TEMPORARY TAPE, TYPE III, LETTERS & SYMBOLS

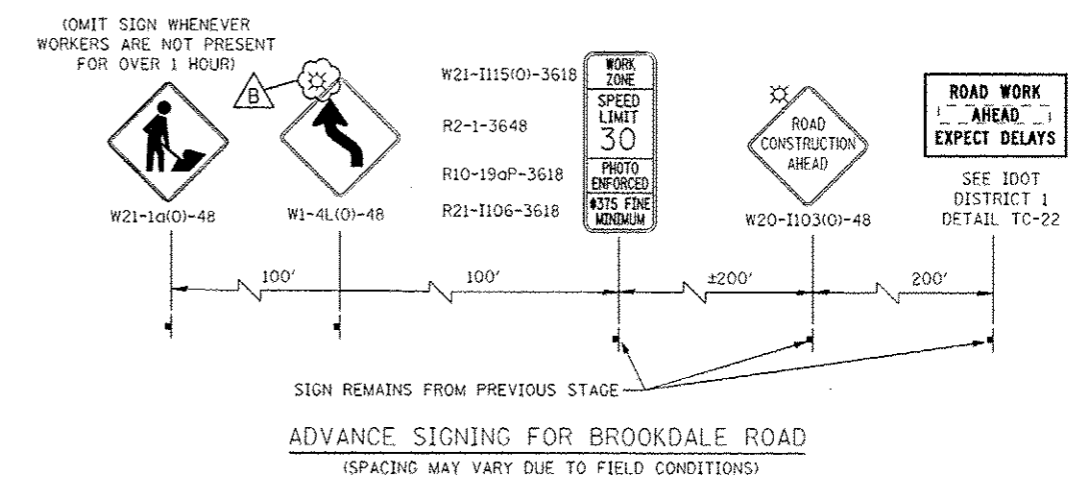
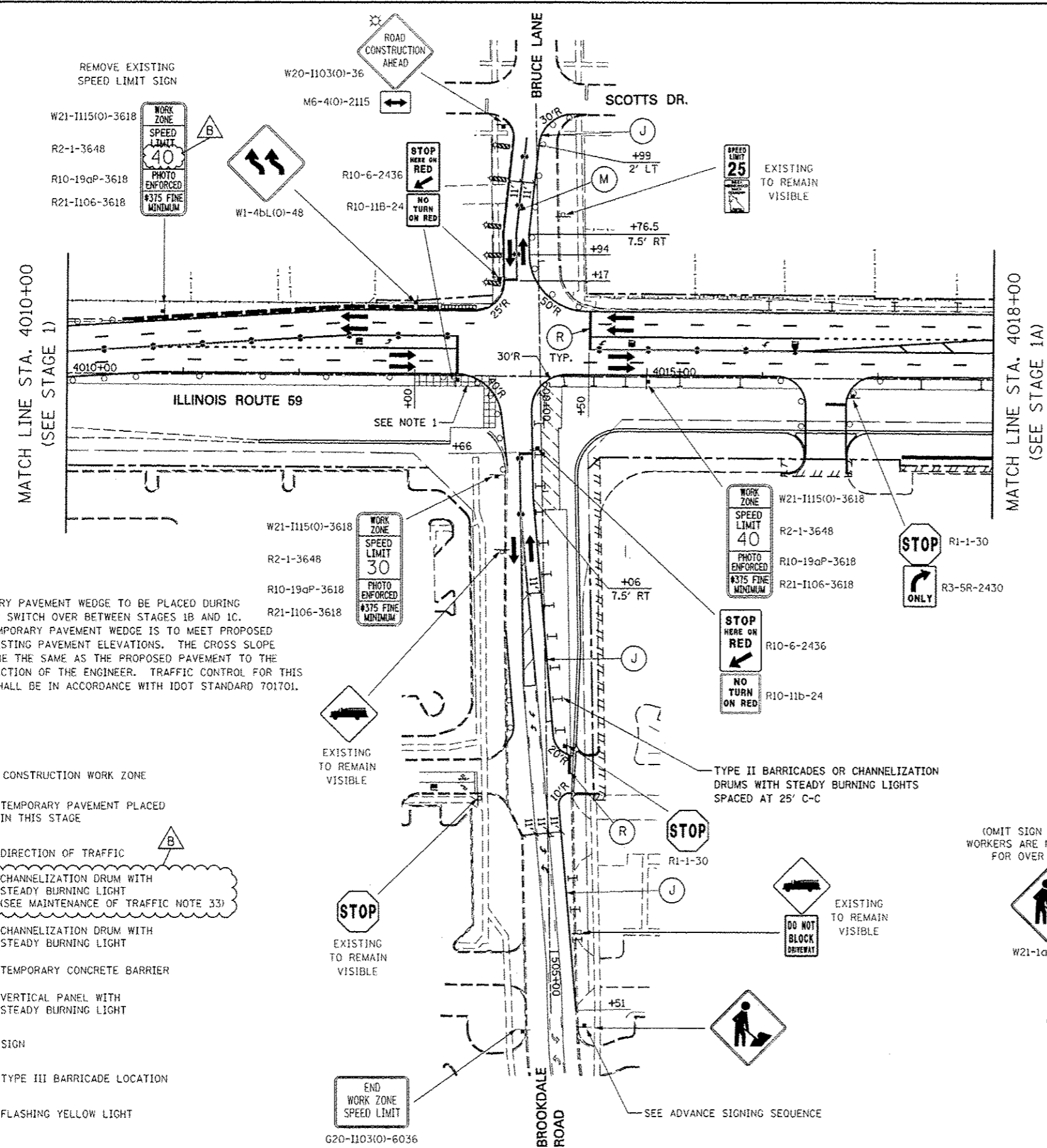


**NOTES**

- TEMPORARY PAVEMENT WEDGE TO BE PLACED DURING TRAFFIC SWITCH OVER BETWEEN STAGES 1B AND 1C. THE TEMPORARY PAVEMENT WEDGE IS TO MEET PROPOSED AND EXISTING PAVEMENT ELEVATIONS. THE CROSS SLOPE SHALL BE THE SAME AS THE PROPOSED PAVEMENT TO THE SATISFACTION OF THE ENGINEER. TRAFFIC CONTROL FOR THIS WORK SHALL BE IN ACCORDANCE WITH IDOT STANDARD 701701.

**LEGEND**

- CONSTRUCTION WORK ZONE
- TEMPORARY PAVEMENT PLACED IN THIS STAGE
- DIRECTION OF TRAFFIC
- CHANNELIZATION DRUM WITH STEADY BURNING LIGHT (SEE MAINTENANCE OF TRAFFIC NOTE 33)
- CHANNELIZATION DRUM WITH STEADY BURNING LIGHT
- TEMPORARY CONCRETE BARRIER
- VERTICAL PANEL WITH STEADY BURNING LIGHT
- SIGN
- TYPE III BARRICADE LOCATION
- FLASHING YELLOW LIGHT



DESIGNED	PJO	REVISED	- ADDENDUM B 05/01/2013
DRAWN	KES	REVISED	-
CHECKED	JCM	REVISED	-
DATE	12/11/2012	REVISED	-

**STATE OF ILLINOIS  
DEPARTMENT OF TRANSPORTATION**

<b>MAINTENANCE OF TRAFFIC - STAGE 1B</b>		F.A.P. RTE.	SECTION	COUNTY	TOTAL SHEETS	SHEET NO.
<b>ILLINOIS ROUTE 59 - BRUCE LN./BROOKDALE RD.</b>		33B	(112 & 113) WRS-6	DUPAGE	734	118
SCALE: AS SHOWN		SHEET NO. 49 OF 117 SHEETS		STA. 4010+00 TO STA. 4018+00		CONTRACT NO. 60R31
ILLINOIS FED. AID PROJECT						