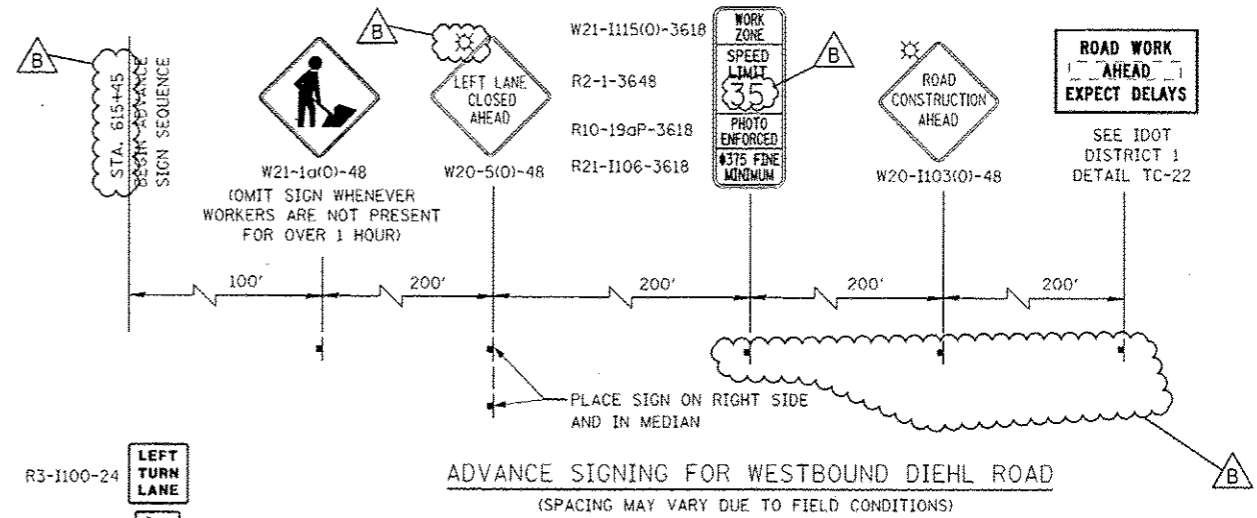
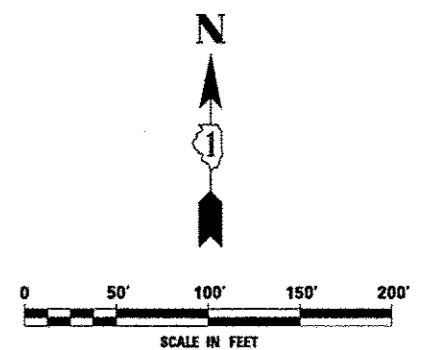


W21-1115(O)-3618
 R2-1-3648
 R10-19aP-3618
 R21-1106-3618

CHANNELIZATION DRUMS WITH
 STEADY BURNING LIGHTS
 SPACED AT 25' C-C, TYP.



ADVANCE SIGNING FOR WESTBOUND DIEHL ROAD
 (SPACING MAY VARY DUE TO FIELD CONDITIONS)



DESIGNED <i>PJO</i>	REVISED - ADDENDUM B 05/01/2013	STATE OF ILLINOIS DEPARTMENT OF TRANSPORTATION	MAINTENANCE OF TRAFFIC - STAGE 2B DIEHL ROAD		F.A.P. RTE.	SECTION	COUNTY	TOTAL SHEETS	SHEET NO.	
DRAWN <i>KES</i>	REVISED -		338	(112 & 113) WRS-6	DUPAGE	734	145			
CHECKED <i>JCM</i>	REVISED -		SCALE: AS SHOWN		SHEET NO. 76 OF 117 SHEETS		STA. 605+00 TO STA. 615+00		CONTRACT NO. 60R31	
DATE <i>12/14/2012</i>	REVISED -		ILLINOIS FED. AID PROJECT							