

W21-1115(0)-3618
 R2-1-3648
 R10-19aP-3618
 R21-1106-3618

WORK ZONE
 SPEED LIMIT
 45
 PHOTO ENFORCED
 #375 FINE
 MINIMUM

STOP
 ONLY

R1-1-30
 R3-5R-2430

R1-1-30
 STOP
 ONLY

R3-5R-2430

KEEP
 RIGHT

R4-7b-2430

EDGE OF PROPOSED PAVEMENT

PROPOSED R.O.W.

DIEHL ROAD

CHANNELIZATION DRUMS WITH STEADY BURNING LIGHTS SPACED AT 25' C-C

CONTRACT 60R31 WORK LIMIT STA. 4045+00

SEE CONTRACT 60I31

KEEP
 RIGHT

R4-7b-2430

LEFT TURN LANE

R3-1100-24
 M6-2L-2115

LEFT TURN LANE

R3-1100-24
 M6-2L-2115

EDGE OF PROPOSED PAVEMENT

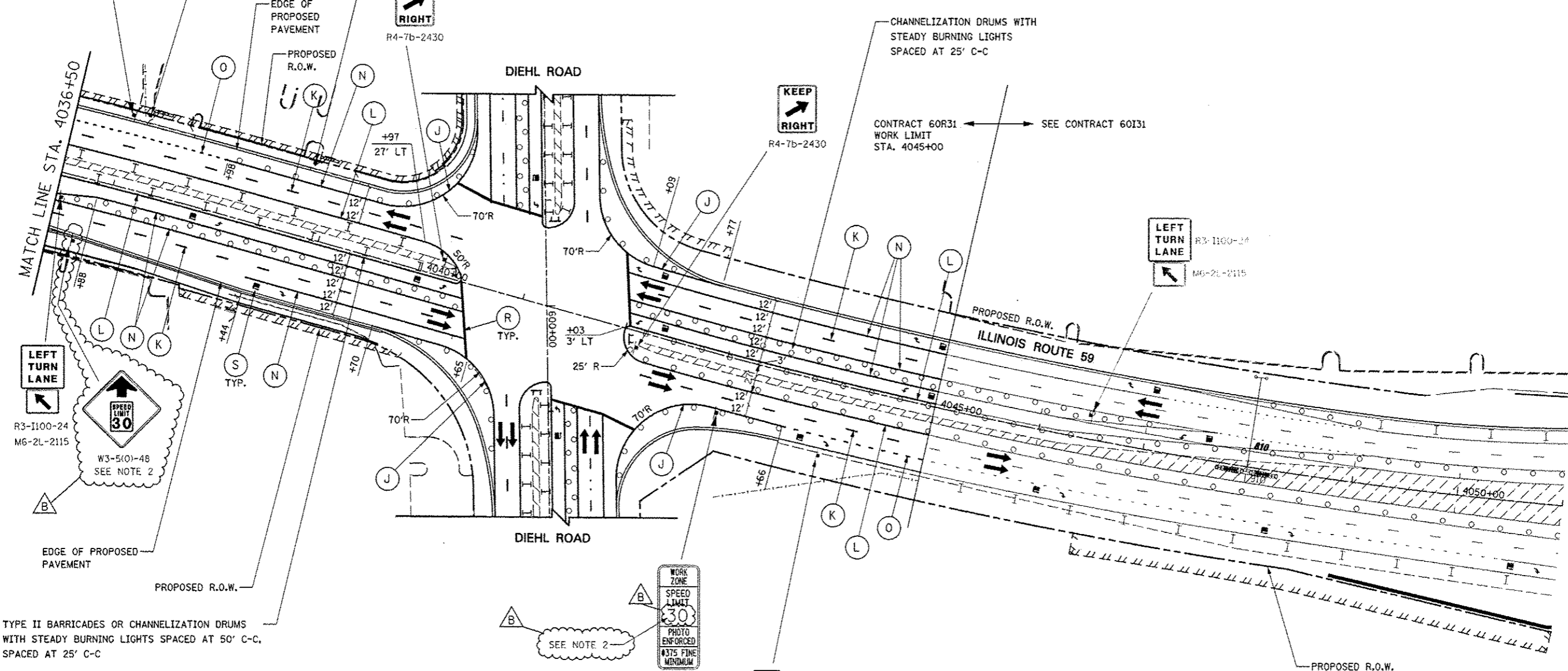
PROPOSED R.O.W.

DIEHL ROAD

ILLINOIS ROUTE 59

PROPOSED R.O.W.

PROPOSED R.O.W.



TYPE II BARRICADES OR CHANNELIZATION DRUMS WITH STEADY BURNING LIGHTS SPACED AT 50' C-C, SPACED AT 25' C-C

SEE NOTE 2

WORK ZONE
 SPEED LIMIT
 30
 PHOTO ENFORCED
 #375 FINE
 MINIMUM

W21-1115(0)-3618
 R2-1-3648
 R10-19aP-3618
 R21-1106-3618

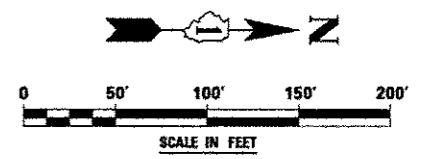
JCT
 TOLL
 88
 M2-1-2115
 M4-15-2412
 M1-1-36

(CONTRACT 60I31)

NOTES

1. ADVANCE SIGN LOCATIONS SHALL BE COORDINATED WITH ADJACENT CONTRACT. "ROAD CONSTRUCTION AHEAD" SIGN SHALL BE PLACED WHEN WARRANTED BY WORK ZONE CONDITIONS OR AS DIRECTED BY THE ENGINEER.

2. THE CONTRACTOR SHALL COORDINATE THE SPEED LIMIT WITH ADJACENT CONTRACT 60I31. INSTALL W3-5 SIGN ONLY IF SPEED LIMIT IN CONTRACT 60I31 IS 30 MPH.



DESIGNED <i>PJO</i>	REVISED - ADDENDUM B 05/01/2013	STATE OF ILLINOIS DEPARTMENT OF TRANSPORTATION	MAINTENANCE OF TRAFFIC - STAGE 4 ILLINOIS ROUTE 59		F.A.P. RTE.	SECTION	COUNTY	TOTAL SHEETS	SHEET NO.
DRAWN <i>KES</i>	REVISED -		338	(112 & 113) WRS-6	DUPAGE	734	176		
CHECKED <i>JCM</i>	REVISED -		CONTRACT NO. 60R31			ILLINOIS FED. AID PROJECT			
DATE <i>12/14/2012</i>	REVISED -		SCALE: AS SHOWN	SHEET NO. 107 OF 117 SHEETS	STA. 4036+50 TO STA. 4045+00				