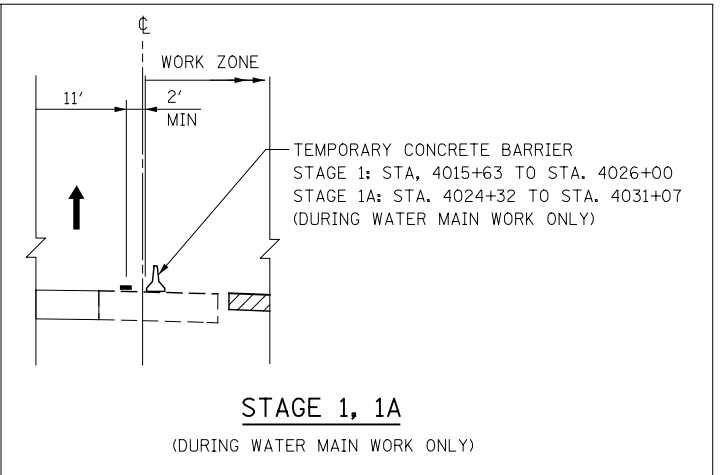
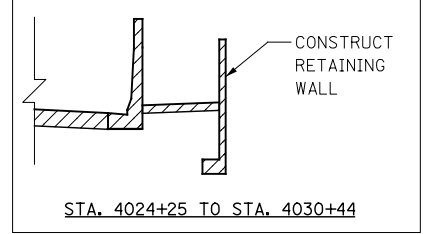
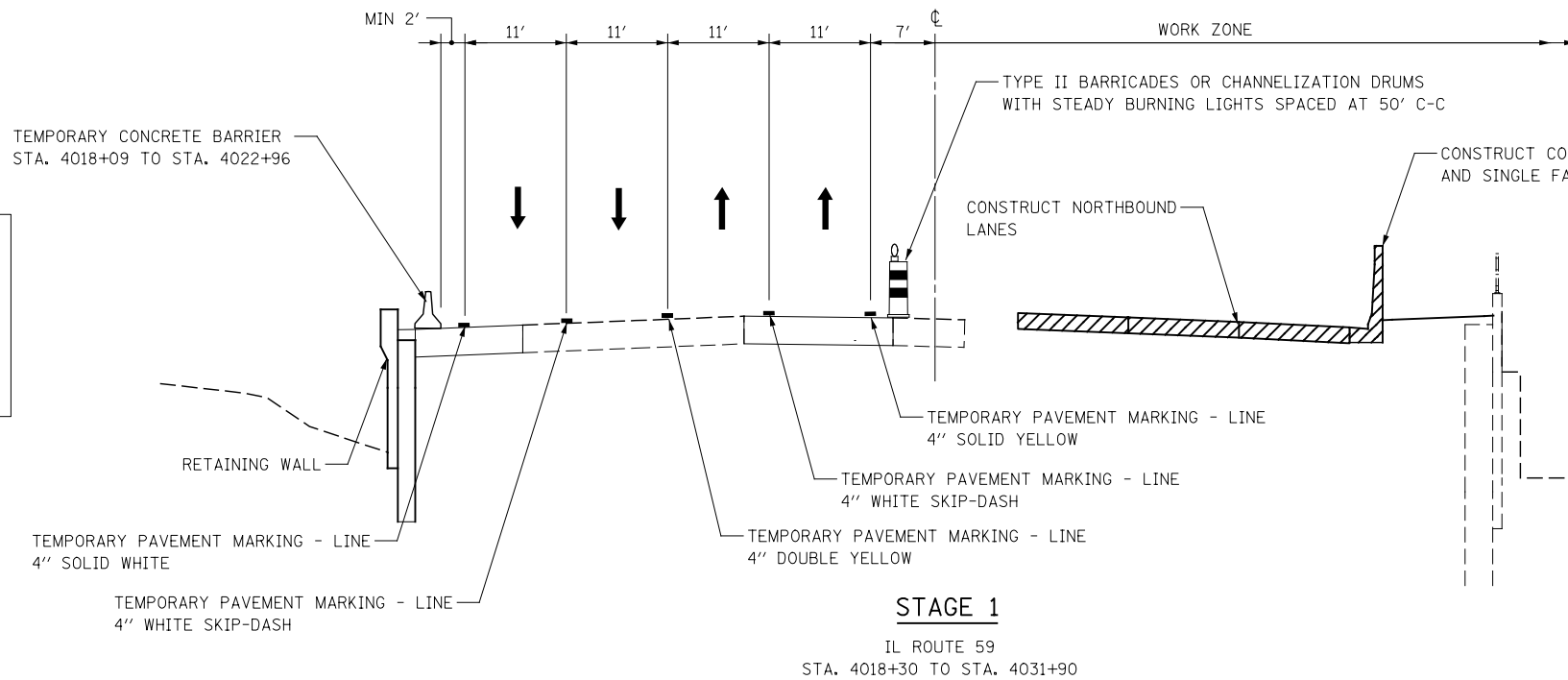


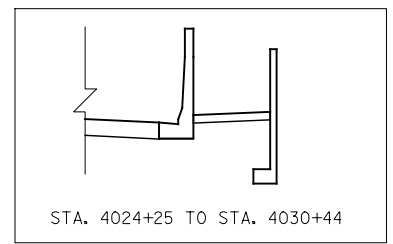
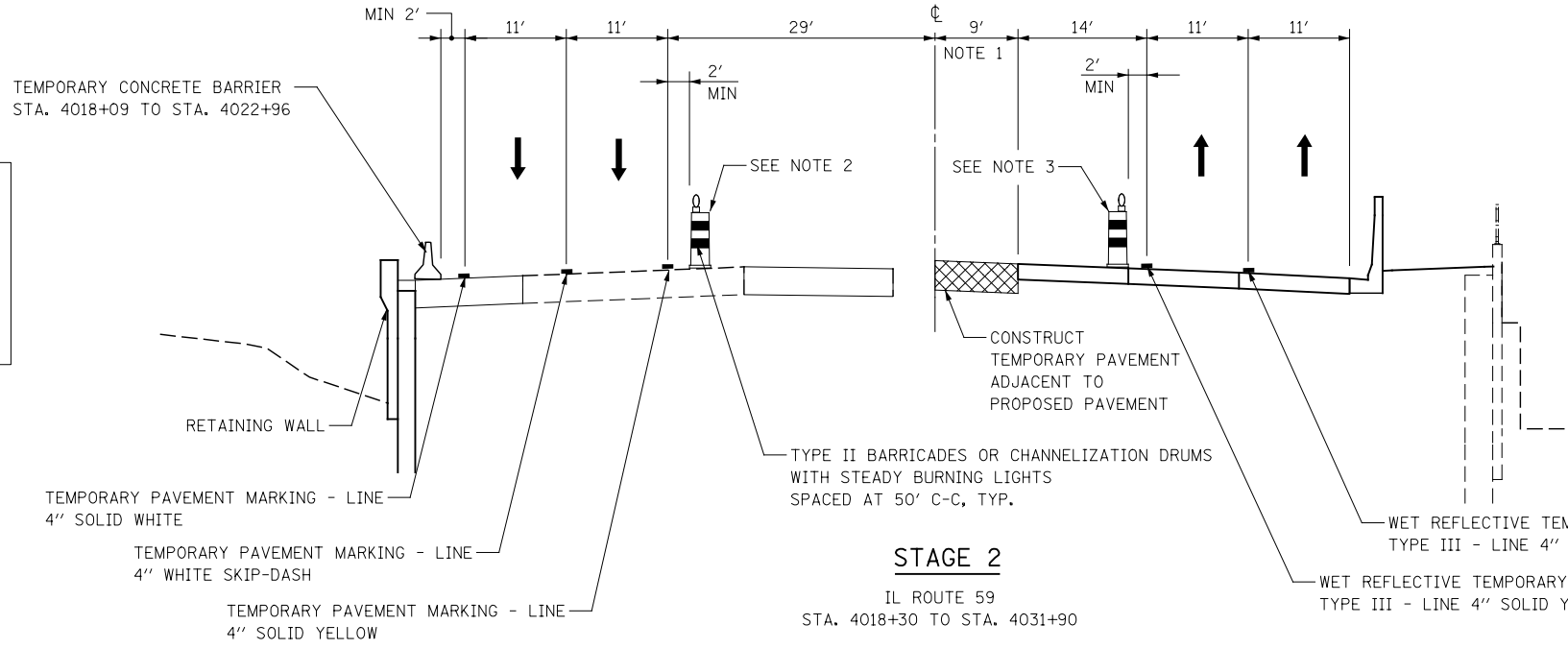
TEMPORARY PAVEMENT MARKING - LINE  
4" SOLID WHITE (1' FROM TEMP EOP)

AT LOCATIONS WITH COMBINATION CONCRETE CURB AND GUTTER AND WITHOUT TEMPORARY CONCRETE BARRIER



TEMPORARY PAVEMENT MARKING - LINE  
4" SOLID WHITE (1' FROM TEMP EOP)

AT LOCATIONS WITH COMBINATION CONCRETE CURB AND GUTTER AND WITHOUT TEMPORARY CONCRETE BARRIER



NOTE 1: TEMPORARY PAVEMENT WIDTH DIMENSION VARIES APPROACHING THE BRUCE DRIVE / BROOKDALE ROAD INTERSECTION (STA. 4018+30 TO STA. 4023+00).

NOTE 2: REPLACE TYPE II BARRICADES OR DRUMS WITH TEMPORARY CONCRETE BARRIER BETWEEN STA. 4020+05 AND STA. 4022+30 DURING BOX CULVERT CONSTRUCTION.

NOTE 3: REPLACE TYPE II BARRICADES OR DRUMS WITH TEMPORARY CONCRETE BARRIER BETWEEN STA. 4020+00 AND STA. 4021+98 DURING BOX CULVERT CONSTRUCTION.

DESIGNED <i>PJO</i>	REVISED -	<b>STATE OF ILLINOIS DEPARTMENT OF TRANSPORTATION</b>	<b>IL ROUTE 59 MOT TYPICAL SECTIONS BRUCE LN /BROOKDALE RD TO PEBBLEWOOD LN /MCDOWELL RD</b>		F.A.P. RTE.	SECTION	COUNTY	TOTAL SHEETS	SHEET NO.
DRAWN <i>KES</i>	REVISED -		338	(112 & 113) WRS-6	DUPAGE	734	83		
CHECKED <i>JCM</i>	REVISED -		SCALE: AS SHOWN   SHEET NO. 14 OF 117 SHEETS   STA. 4018+30 TO STA. 4031+90			CONTRACT NO. 60R31			
DATE <i>12/14/2012</i>	REVISED -		ILLINOIS FED. AID PROJECT						