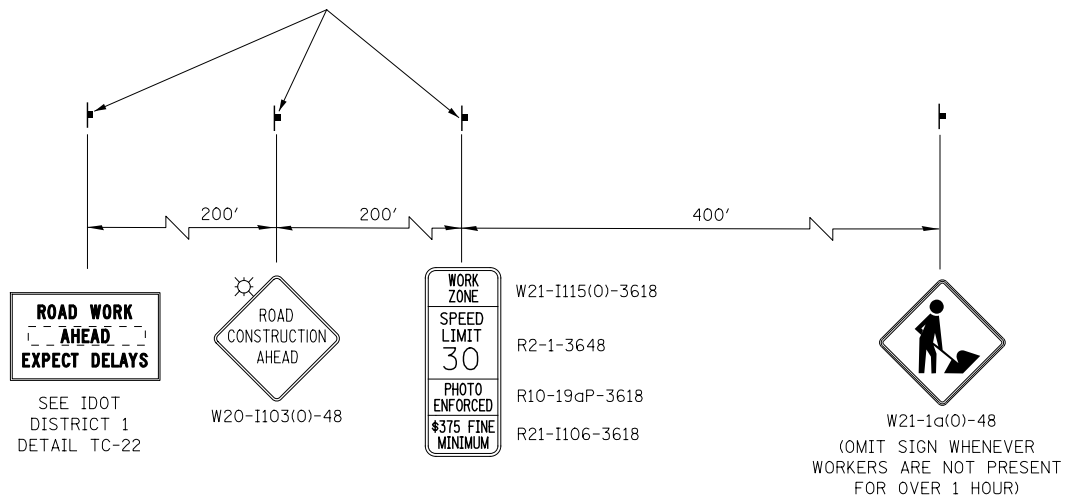
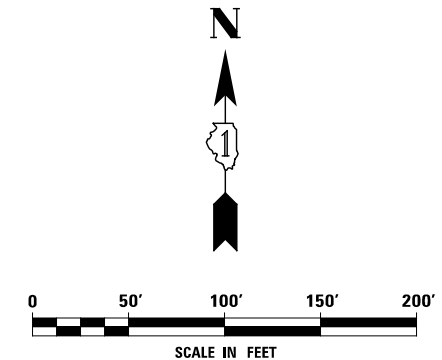


SIGN REMAINS FROM PREVIOUS STAGE



ADVANCE SIGNING FOR EASTBOUND DIEHL ROAD  
(SPACING MAY VARY DUE TO FIELD CONDITIONS)



DESIGNED	PJO	REVISED	-
DRAWN	KES	REVISED	-
CHECKED	JCM	REVISED	-
DATE	12/14/2012	REVISED	-

**STATE OF ILLINOIS  
DEPARTMENT OF TRANSPORTATION**

**MAINTENANCE OF TRAFFIC – STAGE 2  
DIEHL ROAD**

SCALE: AS SHOWN    SHEET NO. 63 OF 117 SHEETS    STA. 581+00    TO STA. 594+00

F.A.P. RTE.	SECTION	COUNTY	TOTAL SHEETS	SHEET NO.
338	(112 & 113) WRS-6	DUPAGE	734	132
CONTRACT NO. 60R31				
ILLINOIS FED. AID PROJECT				