

F.A.I. RTE.	SECTION	COUNTY	TOTAL SHEETS	SHEET NO.
80	(06-6HB-1)BP	BUREAU	9	1
		ILLINOIS	CONTRACT NO. 66C88	

STATE OF ILLINOIS
DEPARTMENT OF TRANSPORTATION
DIVISION OF HIGHWAYS

**PROPOSED
HIGHWAY PLANS**

F.A.I. ROUTE 80 (I-80)
SECTION (06-6HB-1)BP

**CLEANING AND PAINTING STRUCTURAL STEEL
STRUCTURE NO. 006-0127
BUREAU COUNTY**

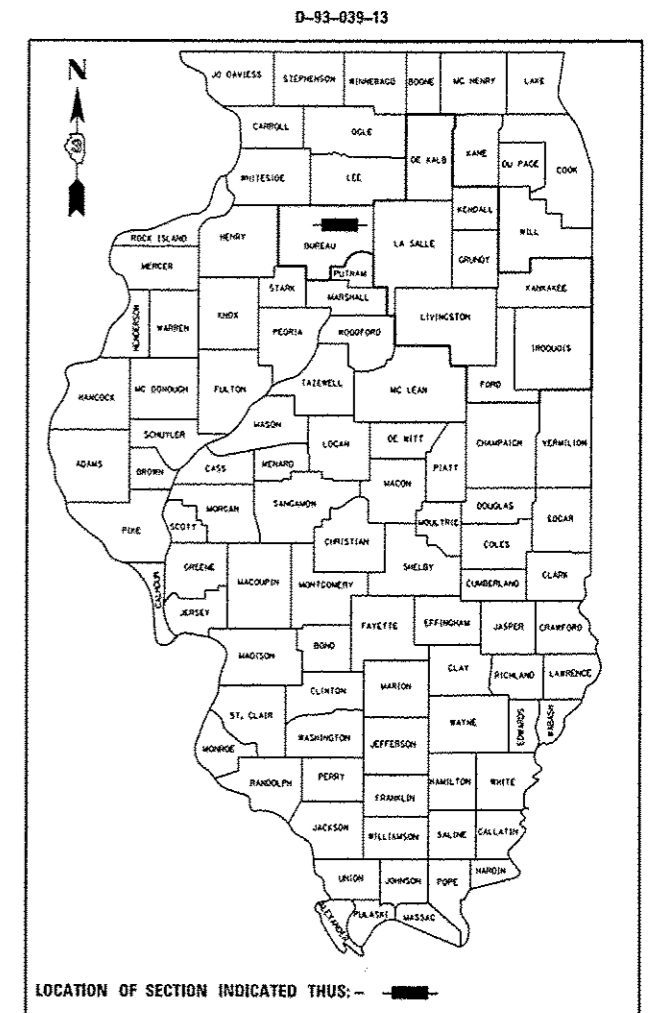
C-93-083-13

INDEX OF SHEETS

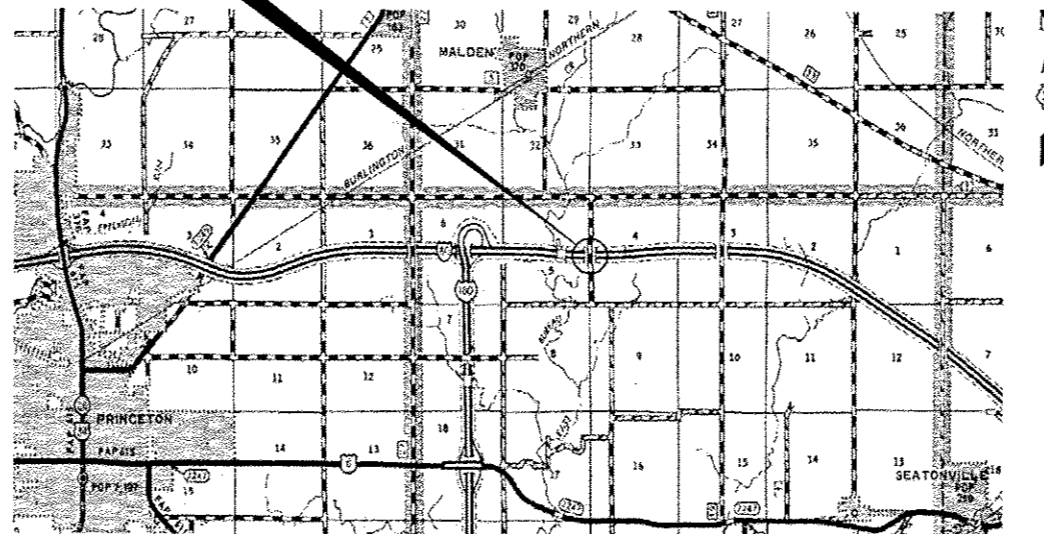
- 1 COVER SHEET
- 2 GENERAL NOTES
- 3 SUMMARY OF QUANTITIES
- 4 TYPICAL SECTIONS
- 5 TRAFFIC CONTROL AND PROTECTION STANDARD 701400 (SPECIAL)
- 6 TRAFFIC CONTROL AND PROTECTION STANDARD 701402 (SPECIAL)
- 7-9 EXISTING STRUCTURE PLANS

STANDARDS

- 000001-06 STANDARD SYMBOLS, ABBREVIATIONS AND PATTERNS
- 001006 DECIMAL OF AN INCH AND OF A FOOT
- 635011-02 REFLECTOR MARKER AND MOUNTING DETAILS
- 701001-02 OFF-ROAD OPERATIONS, 2L, 2W, MORE THAN 15' (4.5m) AWAY
- 701006-04 OFF-ROAD OPERATIONS 2L, 2W, 15' (4.5m) TO 24' (600m) FROM PAVEMENT EDGE
- 701101-03 OFF-ROAD OPERATIONS MULTILANE, 15' (4.5m) TO 24' (600m) FROM PAVEMENT EDGE
- 701106-02 OFF-ROAD OPERATIONS, MULTILANE, MORE THAN 15' (4.5m) AWAY
- 701201-04 LANE CLOSURE, 2L, 2W, DAY ONLY, FOR SPEEDS ≥ 45 MPH
- 701426-05 LANE CLOSURE, MULTILANE INTERMITTENT OR MOVING OPERATION, FOR SPEEDS ≥ 45 MPH
- 701901-02 TRAFFIC CONTROL DEVICES
- 704001-07 TEMPORARY CONCRETE BARRIER
- 780001-03 TYPICAL PAVEMENT MARKINGS

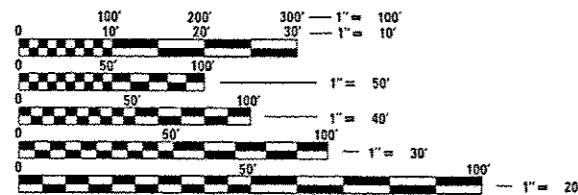


PROJECT LOCATION
SN. 006-0127
CARRYING TR 322
OVER F.A.I 80 (I-80)
STA. 1451 + 52.41



**LOCATION MAP
NOT TO SCALE**

GROSS LENGTH = 217.50 FT. = 0.041 MILE
NET LENGTH = 217.50 FT. = 0.041 MILE



FULL SIZE PLANS HAVE BEEN PREPARED USING STANDARD ENGINEERING SCALES. REDUCED SIZED PLANS WILL NOT CONFORM TO STANDARD SCALES. IN MAKING MEASUREMENTS ON REDUCED PLANS, THE ABOVE SCALES MAY BE USED.

J.U.L.I.E.
JOINT UTILITY LOCATION INFORMATION FOR EXCAVATION
1-800-892-0123
OR 811

DISTRICT 3 NO. (815) 434-6131
PROJECT ENGINEER: JOE KANNEL, P.E.
UNIT CHIEF: RON WOODSHANK
TOWNSHIP: SELBY
CONTRACT NO. 66C88

FUNCTIONAL CLASSIFICATION
RURAL INTERSTATE
FAI ROUTE 80 (I-80)
2011 ADT = 19600
P.V. = 56.88% M.U. = 39.80% S.U. = 3.32%

STATE OF ILLINOIS
DEPARTMENT OF TRANSPORTATION
DIVISION OF HIGHWAYS

SUBMITTED *03/29/13*
Paul A. Calton
DEPUTY DIRECTOR OF HIGHWAYS, REGION ENGINEER

April 26 2013
John D. Baranzelli, P.E.
ENGINEER OF DESIGN AND ENVIRONMENT

April 26 2013
Cher Osman, P.E.
DIRECTOR OF HIGHWAYS, CHIEF ENGINEER

**PRINTED BY THE AUTHORITY
OF THE STATE OF ILLINOIS**