

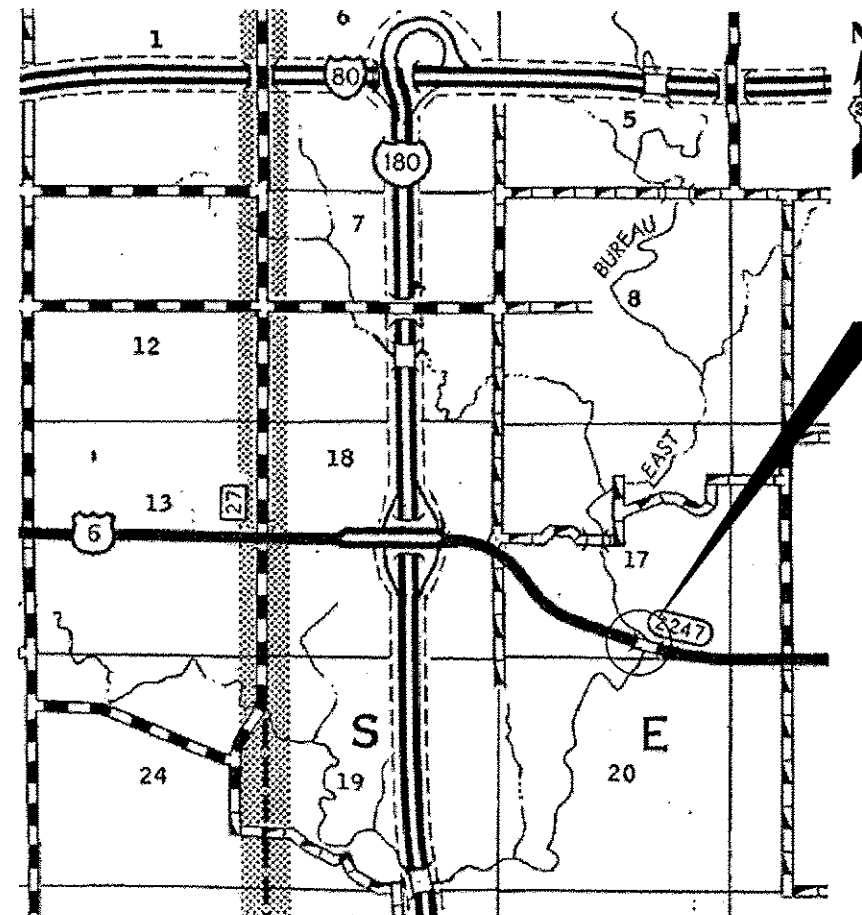
STATE OF ILLINOIS
DEPARTMENT OF TRANSPORTATION
DIVISION OF HIGHWAYS

PROPOSED
HIGHWAY PLANS

F.A.S. ROUTE 2247 (US 6)
SECTION (13C-BR)BP

CLEANING AND PAINTING STRUCTURAL STEEL
STRUCTURE NO. 006-0137
BUREAU COUNTY

C-93-085-13

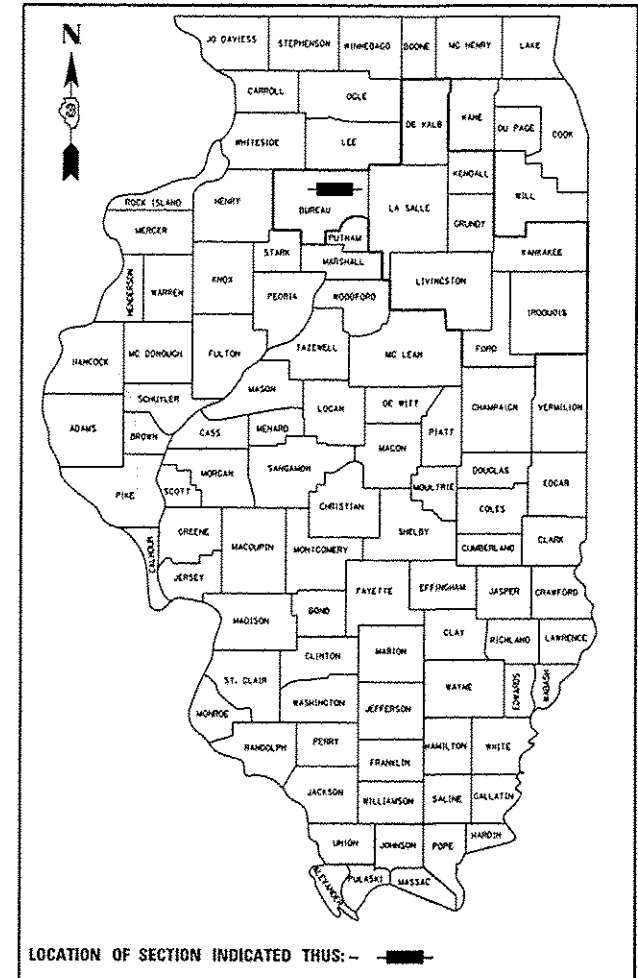


PROJECT LOCATION
SN 006-0137
CARRYING FAS 2247 (US 6) OVER
EAST BUREAU CREEK
1.3 MILES EAST OF I-180

POINT LOCATION

F.A.S. RTE.	SECTION	COUNTY	TOTAL SHEETS	SHEET NO.
2247	(13C-BR)BP	BUREAU	8	1
		ILLINOIS	CONTRACT NO. 66C90	

D-93-040-13



LOCATION OF SECTION INDICATED THUS: —

FUNCTIONAL CLASSIFICATION

MAJOR COLLECTOR

FAS 2247 (US 6)

2011 ADT = 2700

P.V. = 95.93% M.U. = 1.85% S.U. = 2.22%

STATE OF ILLINOIS
DEPARTMENT OF TRANSPORTATION
DIVISION OF HIGHWAYS

SUBMITTED

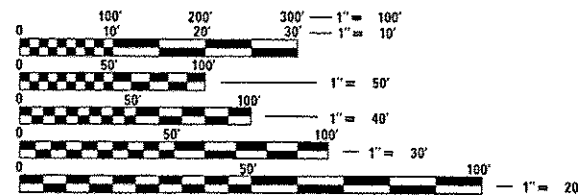
3-29-13
Paul A. Latham
DEPUTY DIRECTOR OF HIGHWAYS, REGION ENGINEER
April 26 2013
John D. Baranzelli, P.E.
ENGINEER OF DESIGN AND ENVIRONMENT
April 26 2013
Cher Osburn, P.E.
DIRECTOR OF HIGHWAYS, CHIEF ENGINEER

INDEX OF SHEETS

- 1 COVER SHEET
- 2 GENERAL NOTES
- 3 SUMMARY OF QUANTITIES
- 4 TYPICAL SECTIONS
- 5-6 TRAFFIC CONTROL AND PROTECTION STANDARD 701321 (SPECIAL)
- 7-8 EXISTING STRUCTURE PLANS

STANDARDS

- 000001-06 STANDARD SYMBOLS, ABBREVIATIONS AND PATTERNS
- 001006 DECIMAL OF AN INCH AND OF A FOOT
- 635011-02 REFLECTOR MARKER AND MOUNTING DETAILS
- 701001-02 OFF-ROAD OPERATIONS, 2L, 2W, MORE THAN 15' (4.5m) AWAY
- 701006-03 OFF-RD OPERATIONS, 2L, 2W, 15' (4.5m) TO 24" (600m) FROM PAVEMENT EDGE
- 701201-04 LANE CLOSURE, 2L, 2W, DAY ONLY, FOR SPEEDS > 45 MPH
- 701301-04 LANE CLOSURE, 2L, 2W, SHORT TIME OPERATIONS
- 701311-03 LANE CLOSURE, 2L, 2W, MOVING OPERATIONS-DAY ONLY
- 701321-11 LANE CLOSURE, 2L, 2W, BRIDGE REPAIRS WITH BARRIER
- 701901-02 TRAFFIC CONTROL DEVICES
- 704001-07 TEMPORARY CONCRETE BARRIER
- 780001-03 TYPICAL PAVEMENT MARKINGS



FULL SIZE PLANS HAVE BEEN PREPARED USING STANDARD ENGINEERING SCALES. REDUCED SIZED PLANS WILL NOT CONFORM TO STANDARD SCALES. IN MAKING MEASUREMENTS ON REDUCED PLANS, THE ABOVE SCALES MAY BE USED.

J.U.L.I.E.
JOINT UTILITY LOCATION INFORMATION FOR EXCAVATION
1-800-892-0123
OR 811

DISTRICT 3 NO. (815) 434-6131

PROJECT ENGINEER: JOE KANNEL, P.E.

UNIT CHIEF: RON WOODSHANK

TOWNSHIP: SELBY

CONTRACT NO. 66C90

PRINTED BY THE AUTHORITY
OF THE STATE OF ILLINOIS