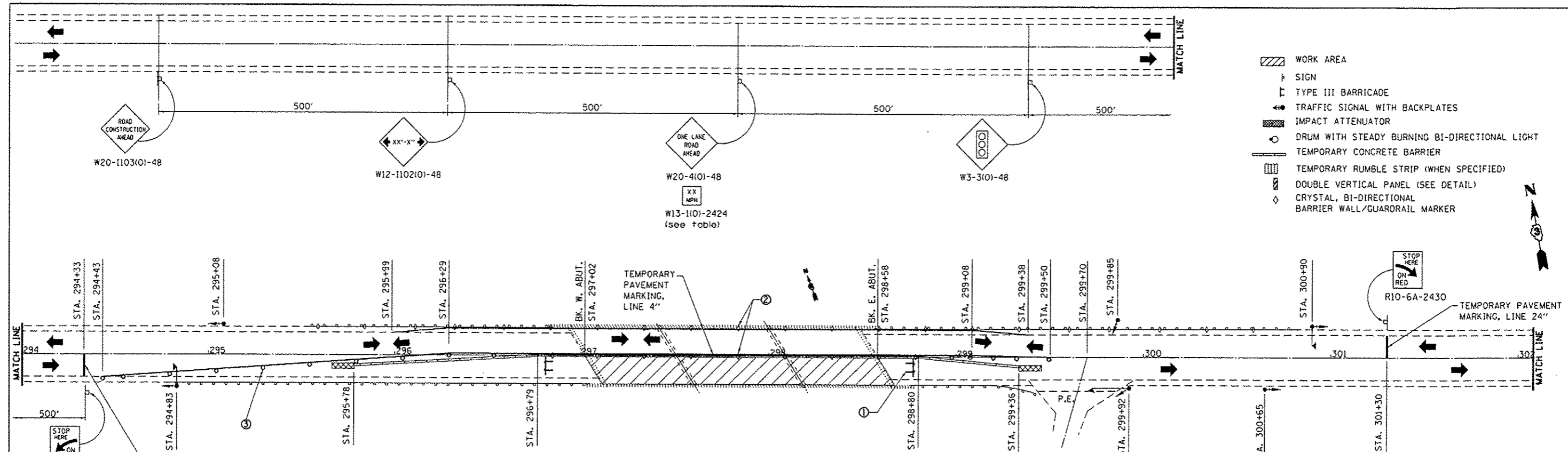
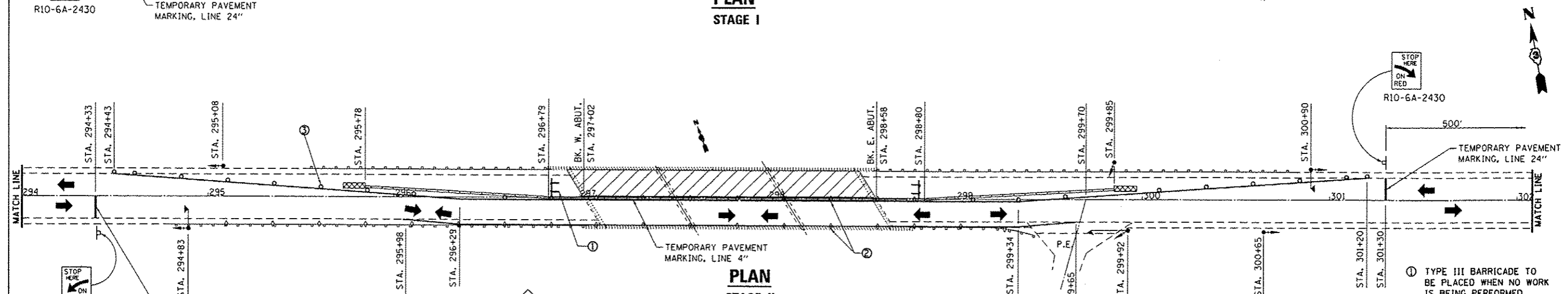


- WORK AREA
- SIGN
- TYPE III BARRICADE
- TRAFFIC SIGNAL WITH BACKPLATES
- IMPACT ATTENUATOR
- DRUM WITH STEADY BURNING BI-DIRECTIONAL LIGHT
- TEMPORARY CONCRETE BARRIER
- TEMPORARY RUMBLE STRIP (WHEN SPECIFIED)
- DOUBLE VERTICAL PANEL (SEE DETAIL)
- CRYSTAL, BI-DIRECTIONAL BARRIER WALL/GUARDRAIL MARKER



**PLAN
STAGE I**



**PLAN
STAGE II**

- ① TYPE III BARRICADE TO BE PLACED WHEN NO WORK IS BEING PERFORMED.
- ② BARRIER WALL/GUARDRAIL MARKERS AT 25' CTS. SEE STANDARDS 704001 AND 635011.
- ③ DRUMS AT 25' CTS. (TYPICAL)

GENERAL NOTES

SEE TRAFFIC CONTROL AND PROTECTION STANDARD 701321 FOR DETAILS NOT SHOWN

TEMPORARY PAVEMENT MARKINGS SHOWN WILL NOT BE MEASURED FOR PAYMENT.

REMOVAL OF TEMPORARY PAVEMENT MARKINGS WILL NOT BE MEASURED FOR PAYMENT.

FILE NAME =	USER NAME = spurlackd	DESIGNED - DBS	REVISED -	STATE OF ILLINOIS DEPARTMENT OF TRANSPORTATION	TRAFFIC CONTROL AND PROTECTION STANDARD 701321 (SPECIAL)		F.A.S. RTE.	SECTION	COUNTY	TOTAL SHEETS	SHEET NO.	
c:\pwwork\spurlackd\0336411\036	BC10-shr-detailed.dgn	DRAWN - DBS	REVISED -		SCALE: NONE	SHEET 1 OF 2 SHEETS	STA. TO STA.	2247	113C-BRIBP	BUREAU	8	5
Default	PLOT SCALE = 1/8" = 100.0000' / 1"	CHECKED -	REVISED -									
	PLOT DATE = 3/27/2013	DATE - MAR 2013	REVISED -									
									CONTRACT NO. 66C90		ILLINOIS FED. AID PROJECT	