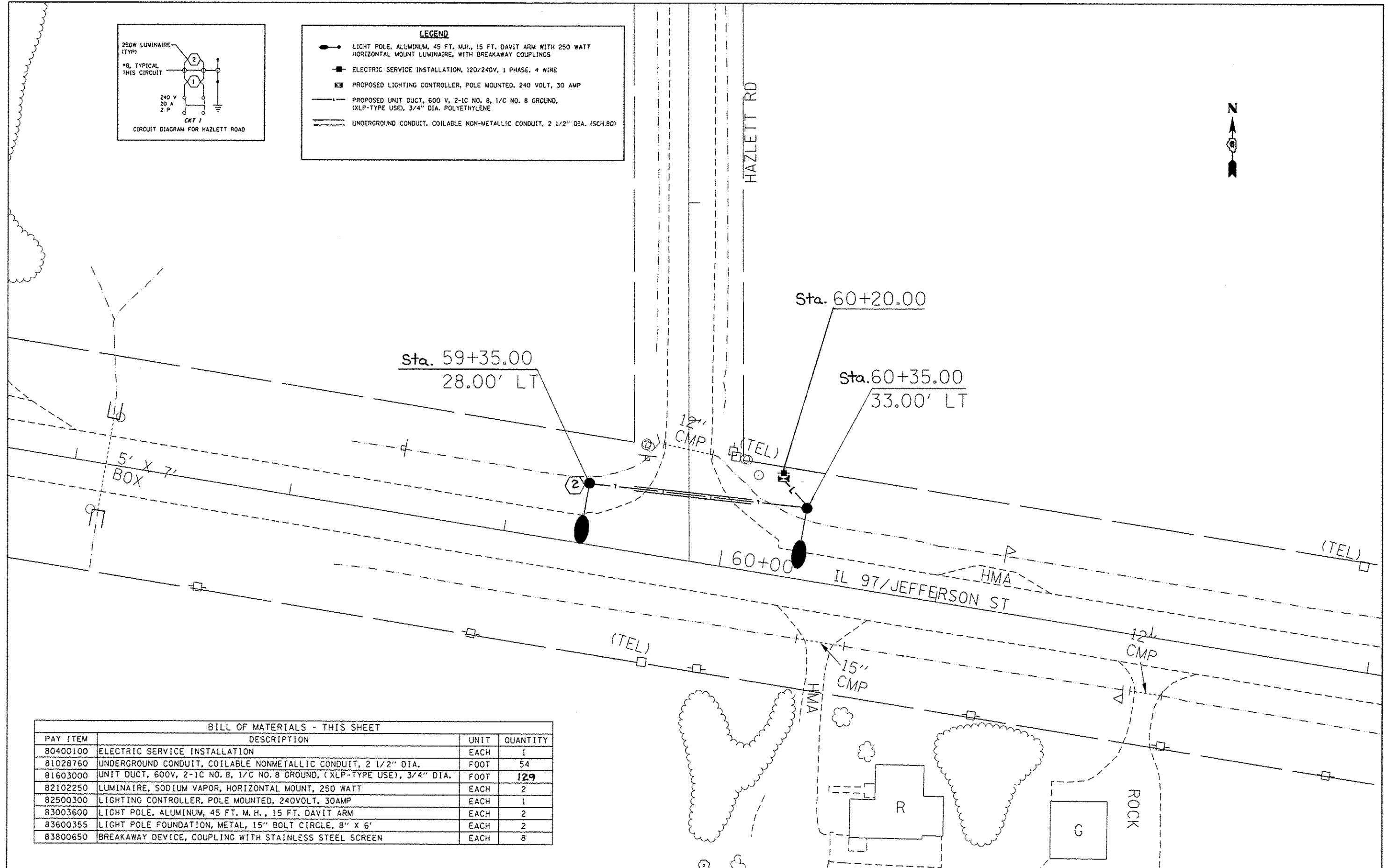


LEGEND	
	LIGHT POLE, ALUMINUM, 45 FT. M.H., 15 FT. DAVIT ARM WITH 250 WATT HORIZONTAL MOUNT LUMINAIRE, WITH BREAKAWAY COUPLINGS
	ELECTRIC SERVICE INSTALLATION, 120/240V, 1 PHASE, 4 WIRE
	PROPOSED LIGHTING CONTROLLER, POLE MOUNTED, 240 VOLT, 30 AMP
	PROPOSED UNIT DUCT, 600 V, 2-1C NO. 8, 1/C NO. 8 GROUND, (XLP-TYPE USE), 3/4" DIA. POLYETHYLENE
	UNDERGROUND CONDUIT, COILABLE NON-METALLIC CONDUIT, 2 1/2" DIA. (SCH.80)



BILL OF MATERIALS - THIS SHEET			
PAY ITEM	DESCRIPTION	UNIT	QUANTITY
80400100	ELECTRIC SERVICE INSTALLATION	EACH	1
81028760	UNDERGROUND CONDUIT, COILABLE NONMETALLIC CONDUIT, 2 1/2" DIA.	FOOT	54
81603000	UNIT DUCT, 600V, 2-1C NO. 8, 1/C NO. 8 GROUND, (XLP-TYPE USE), 3/4" DIA.	FOOT	129
82102250	LUMINAIRE, SODIUM VAPOR, HORIZONTAL MOUNT, 250 WATT	EACH	2
82500300	LIGHTING CONTROLLER, POLE MOUNTED, 240VOLT, 30AMP	EACH	1
83003600	LIGHT POLE, ALUMINUM, 45 FT. M. H., 15 FT. DAVIT ARM	EACH	2
83600355	LIGHT POLE FOUNDATION, METAL, 15" BOLT CIRCLE, 8" X 6"	EACH	2
83800650	BREAKAWAY DEVICE, COUPLING WITH STAINLESS STEEL SCREEN	EACH	8

FILE NAME =	USER NAME = sparkage	DESIGNED -	REVISED -
ct:\pwork\pvidot\sparkage\0332358\067	CG4-shr:plan sheets.dgn	DRAWN -	REVISED -
Default	PLOT SCALE = 48.0000' / in.	CHECKED -	REVISED -
	PLOT DATE = Mar-13-2013 09:43:21AM	DATE -	REVISED -

**STATE OF ILLINOIS  
DEPARTMENT OF TRANSPORTATION**

**PLAN SHEET - HAZLETT ROAD**

SCALE: SHEET OF SHEETS STA. TO STA.

F.A.P. RTE.	SECTION	COUNTY	TOTAL SHEETS	SHEET NO.
67	(S) L-1	SANGAMON	9	6
CONTRACT NO. 72004				
ILLINOIS FED. AID PROJECT				