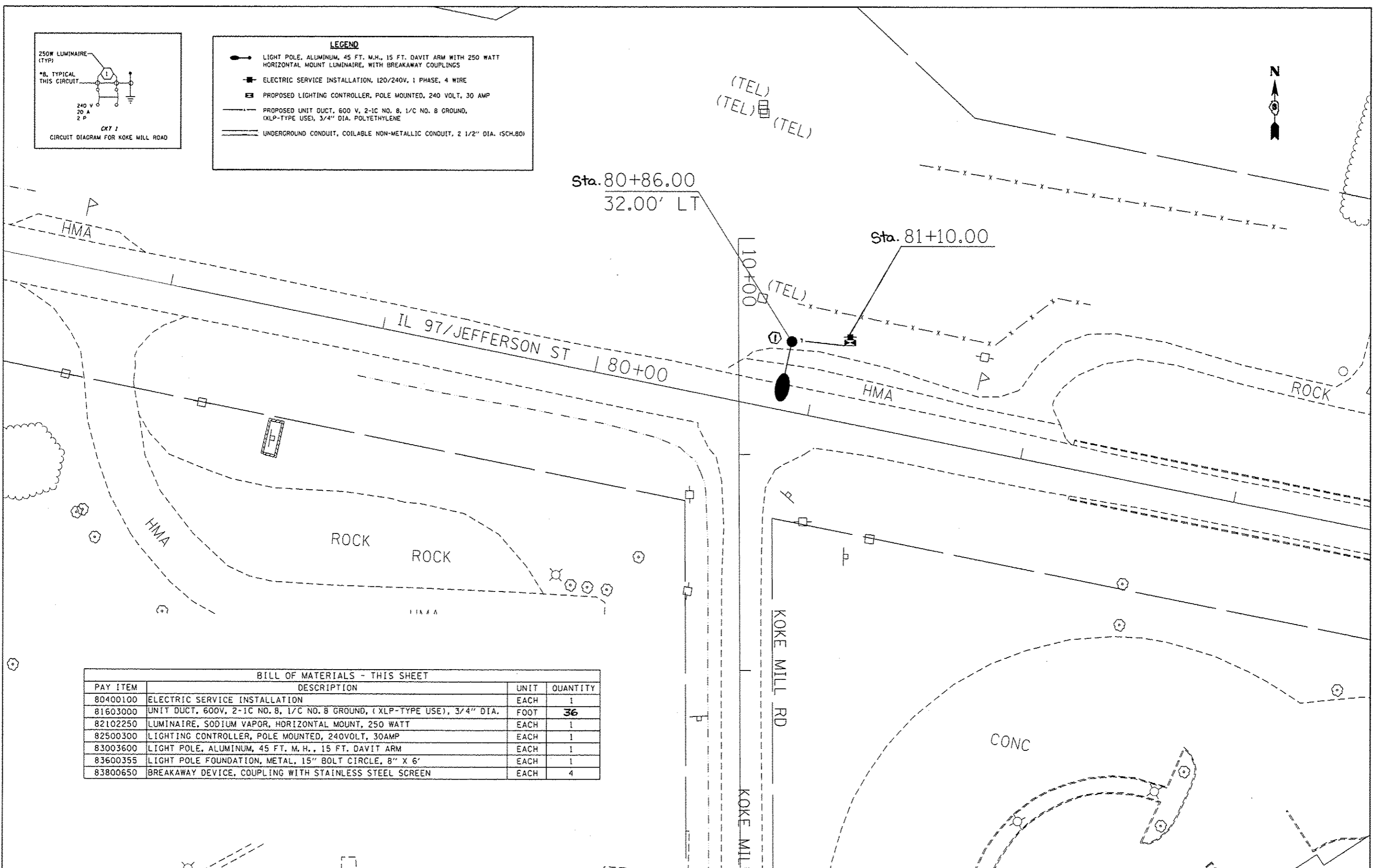


**LEGEND**

- LIGHT POLE, ALUMINUM, 45 FT. M.H., 15 FT. DAVIT ARM WITH 250 WATT HORIZONTAL MOUNT LUMINAIRE, WITH BREAKAWAY COUPLINGS
- ELECTRIC SERVICE INSTALLATION, 120/240V, 1 PHASE, 4 WIRE
- PROPOSED LIGHTING CONTROLLER, POLE MOUNTED, 240 VOLT, 30 AMP
- PROPOSED UNIT DUCT, 600 V, 2-1C NO. 8, 1/C NO. 8 GROUND, (XLP-TYPE USE), 3/4" DIA. POLYETHYLENE
- UNDERGROUND CONDUIT, COILABLE NON-METALLIC CONDUIT, 2 1/2" DIA. (SCH.80)



**BILL OF MATERIALS - THIS SHEET**

PAY ITEM	DESCRIPTION	UNIT	QUANTITY
80400100	ELECTRIC SERVICE INSTALLATION	EACH	1
81603000	UNIT DUCT, 600V, 2-1C NO. 8, 1/C NO. 8 GROUND, (XLP-TYPE USE), 3/4" DIA.	FOOT	36
82102250	LUMINAIRE, SODIUM VAPOR, HORIZONTAL MOUNT, 250 WATT	EACH	1
82500300	LIGHTING CONTROLLER, POLE MOUNTED, 240VOLT, 30AMP	EACH	1
83003600	LIGHT POLE, ALUMINUM, 45 FT. M. H., 15 FT. DAVIT ARM	EACH	1
83600355	LIGHT POLE FOUNDATION, METAL, 15" BOLT CIRCLE, 8" X 6"	EACH	1
83800650	BREAKAWAY DEVICE, COUPLING WITH STAINLESS STEEL SCREEN	EACH	4

FILE NAME =	USER NAME = sparkgw	DESIGNED -	REVISED -
c:\pwwork\spw\do\sparkgw\0332350\067	SR4-shr-plansheets.dgn	DRAWN -	REVISED -
Default	PLOT SCALE = 48.8888' / in.	CHECKED -	REVISED -
	PLOT DATE = Mar-13-2013 07:43:22AM	DATE -	REVISED -

**STATE OF ILLINOIS  
 DEPARTMENT OF TRANSPORTATION**

**PLAN SHEET - KOKE MILL ROAD**

SCALE: SHEET OF SHEETS STA. TO STA.

F.A.P. RTE.	SECTION	COUNTY	TOTAL SHEETS	SHEET NO.
67	(S) L-1	SANGAMON	9	7
CONTRACT NO. 72G04				
ILLINOIS FED. AID PROJECT				