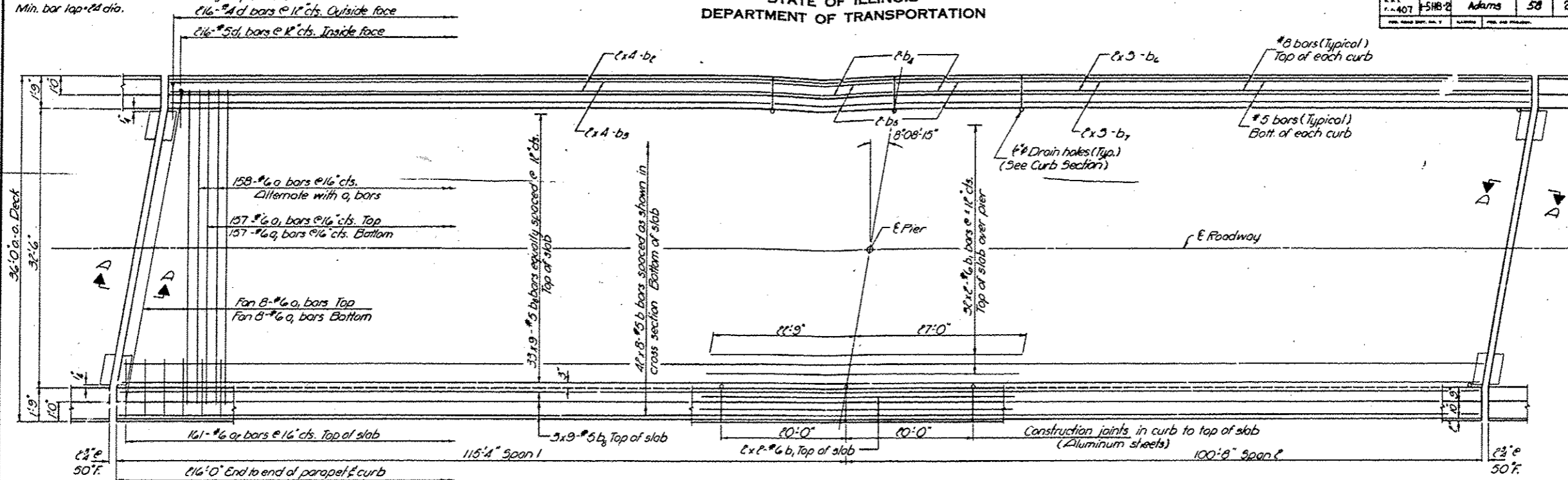


STATE OF ILLINOIS
DEPARTMENT OF TRANSPORTATION

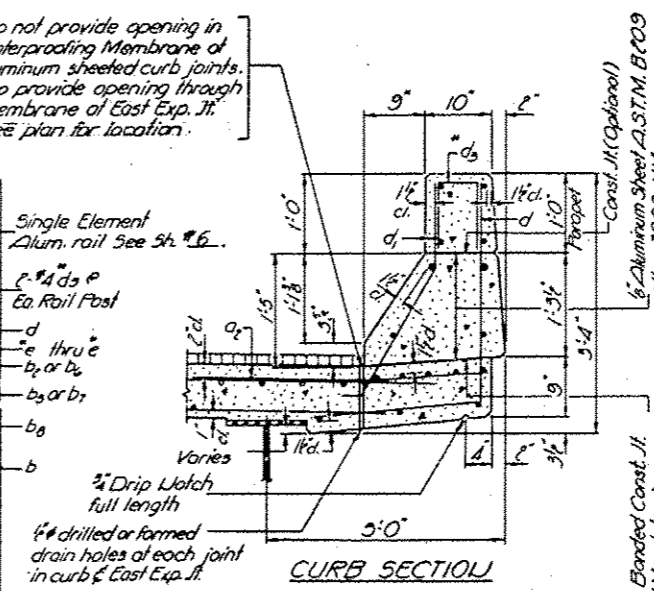
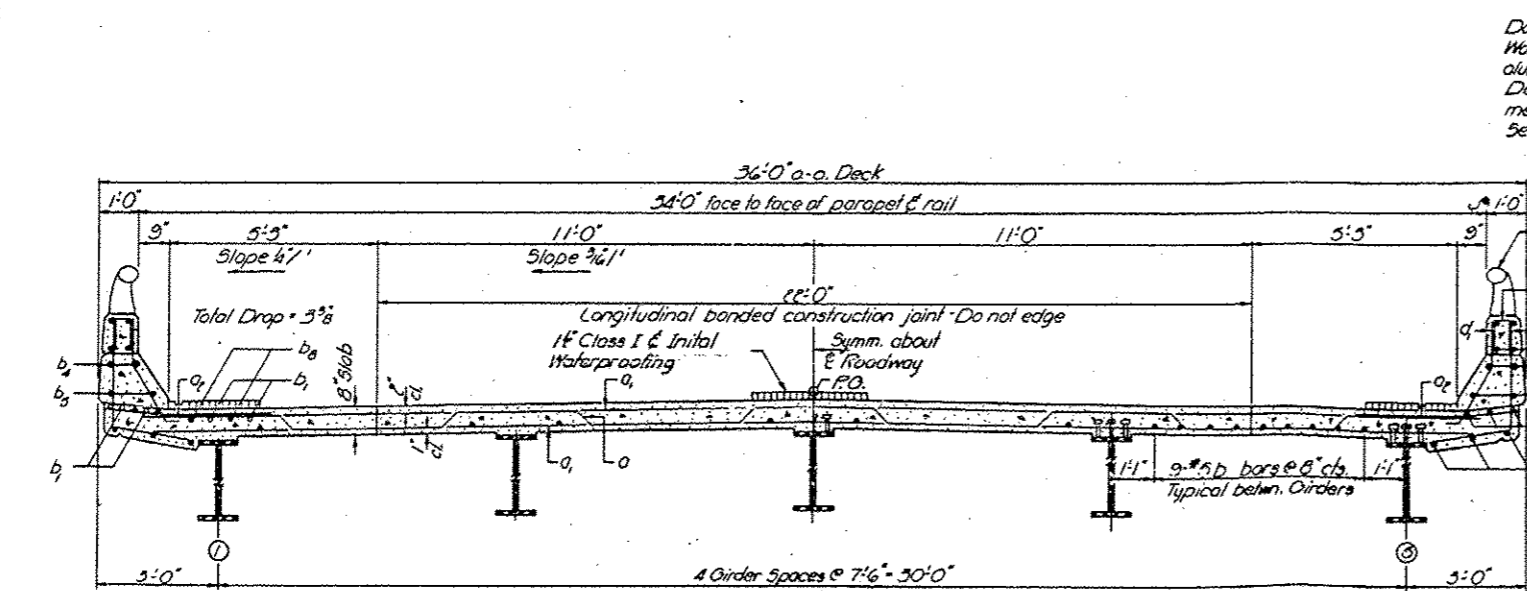
PROJECT NO.	SECTION	COUNTY	TOTAL SHEETS	SHEET NO.
407	5HB-2	Adams	58	23
SHEET NO. 5				
11 SHEETS				

Note: Bars indicated thus (0x5-#5 etc. indicates 10 lines of bars with 5 lengths per line. Min. bar lap = 24 dia.



FLAU

Note: For Sec. A-A see sh. 4.



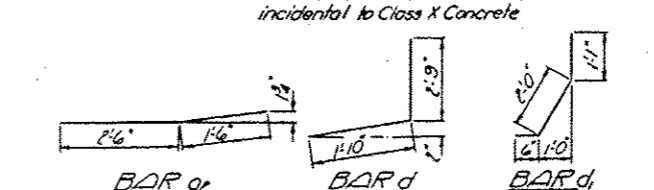
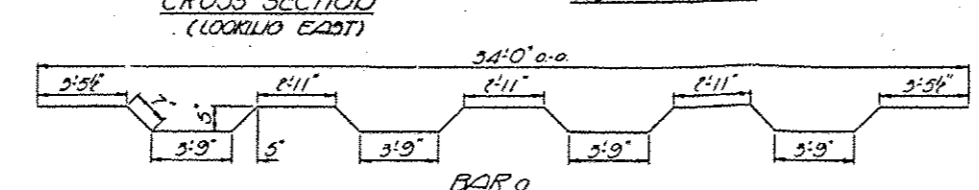
BILL OF MATERIAL

Bar	Qty	Size	Length	Shape
a	158	#6	25'-4"	---
a1	346	#6	34'-0"	---
a2	322	#6	4'-0"	---
b	336	#5	28'-3"	---
b1	72	#6	25'-9"	---
b2	16	#8	25'-6"	---
b3	16	#5	24'-9"	---
b4	8	#8	19'-9"	---
b5	8	#5	19'-9"	---
b6	12	#8	28'-5"	---
b7	12	#5	27'-9"	---
b8	351	#5	25'-3"	---
c	432	#4	4'-7"	J
d	432	#5	5'-7"	J
Class X Concrete				Cu Yds. 228.7
Reinforcement Bars				Lbs. 56,700

* Parapet Reinforcement and Class X Concrete are billed on sh. #6.

DESIGNED	Steve Butler
CHECKED	James P. O'Connell
DRAWN	J.D.
CHECKED	GEO.

EXAMINED	March 12, 1975
APPROVED	



SUPERSTRUCTURE
F.A.P. RT. 407 SEC. 15HB-2
ADAMS COUNTY
STA. 223+42.61

FOR INFORMATION ONLY