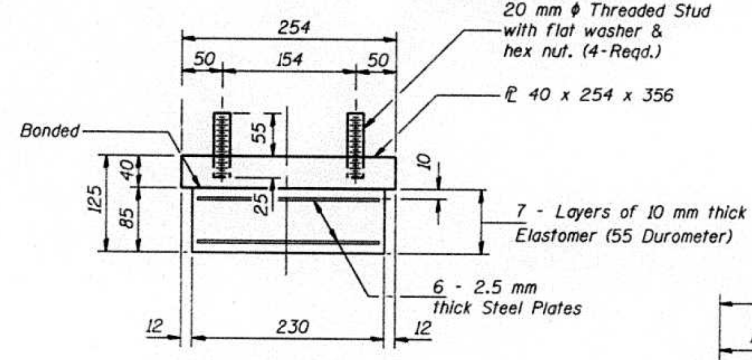


ELEVATION AT ABUT.

SECTION A-A

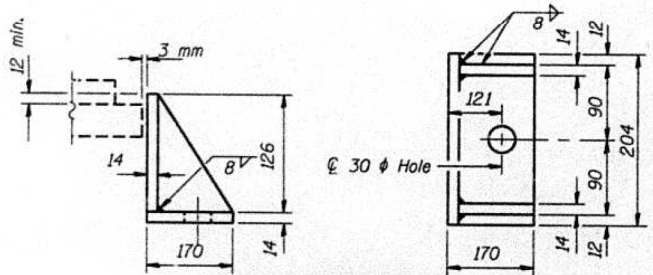
**TYPE I ELASTOMERIC EXP. BRG.
GIRDERS NO. 1 THRU NO. 14**

Notes: Anchor bolts at fixed bearings may be built into the masonry.
See sheet #14 and 15 of 24 for Bearing Anchor Bolt installation at abutments and #16 of 24 for Bearing Anchor Bolt installation at pier.
All dimensions are in millimeters (mm) except as noted.



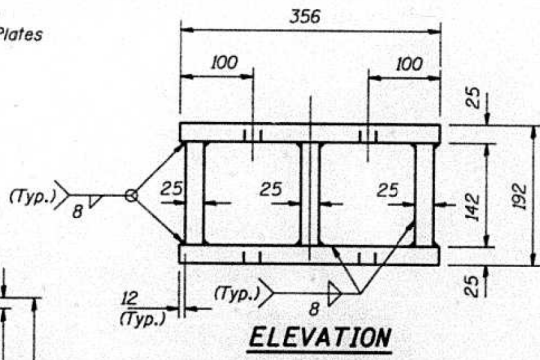
BEARING ASSEMBLY

Note: Shim plates shall not be placed under Bearing Assembly.

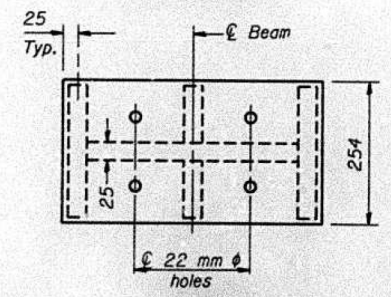


SIDE RETAINER

Equivalent rolled angle with stiffeners will be allowed in lieu of welded plates.
Weight included with Structural Steel.
(No. Required - 60)



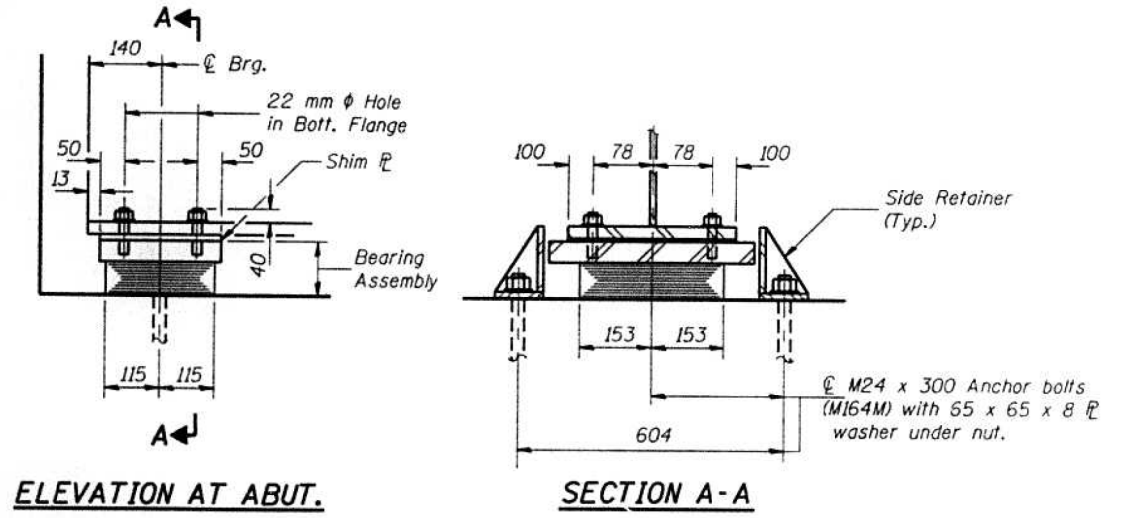
ELEVATION



PLAN

FABRICATED STEEL EXTENSION

Weight included with Structural Steel.
(No. Required - 28)



ELEVATION AT ABUT.

SECTION A-A

**TYPE I ELASTOMERIC EXP. BRG.
GIRDER NO. 15**

NOT TO SCALE

FOR INFORMATION ONLY
1998 RECONSTRUCTION

NOTE: PLANS ARE IN METRIC.

FILE NAME =	USER NAME = *USER*	DESIGNED -	REVISED -	STATE OF ILLINOIS DEPARTMENT OF TRANSPORTATION	EXISTING STRUCTURE DETAILS			F.A.I. RTE.	SECTION	COUNTY	TOTAL SHEETS	SHEET NO.
*FILE#		DRAWN -	REVISED -					64	82-5HB-3-P	ST. CLAIR	12	9
PLOT SCALE = *SCALE*		CHECKED -	REVISED -		CONTRACT NO. 76G33							
PLOT DATE = *DATE*		DATE -	REVISED -		SCALE: N/A	SHEET NO. 5 OF 7 SHEETS	STA.	TO STA.	FED. ROAD DIST. NO.	ILLINOIS FED. AID PROJECT		