

05-24-13 SPECIAL LETTING ITEM 054

FOR INDEX OF SHEETS, SEE SHEET NO. 2

STATE OF ILLINOIS  
 DEPARTMENT OF TRANSPORTATION  
 DIVISION OF HIGHWAYS  
**PROPOSED  
 HIGHWAY PLANS**

FAI 64 (I-064)  
 SECTION 82-5HB-3-P

BRIDGE PAINTING  
 ST CLAIR COUNTY

C-98-035-13

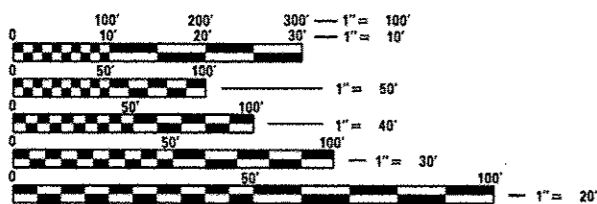
F.A.I. RTE.	SECTION	COUNTY	TOTAL SHEETS	SHEET NO.
64	82-5HB-3-P	ST. CLAIR	12	1
		ILLINOIS	CONTRACT NO. 76G33	

I 64  
 2011 ADT = 77500 (ACTUAL)  
 2013 ADT = 78600 (ESTIMATED)  
 2033 ADT = 90400 (ESTIMATED)  
 SU = 2.0% MU = 9.0%

IL 159  
 2011 ADT = 35400 (ACTUAL)  
 2013 ADT = 35900 (ESTIMATED)  
 2033 ADT = 41300 (ESTIMATED)  
 SU = 1.1% MU = 0.8%

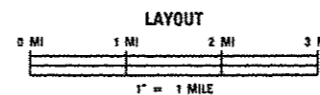
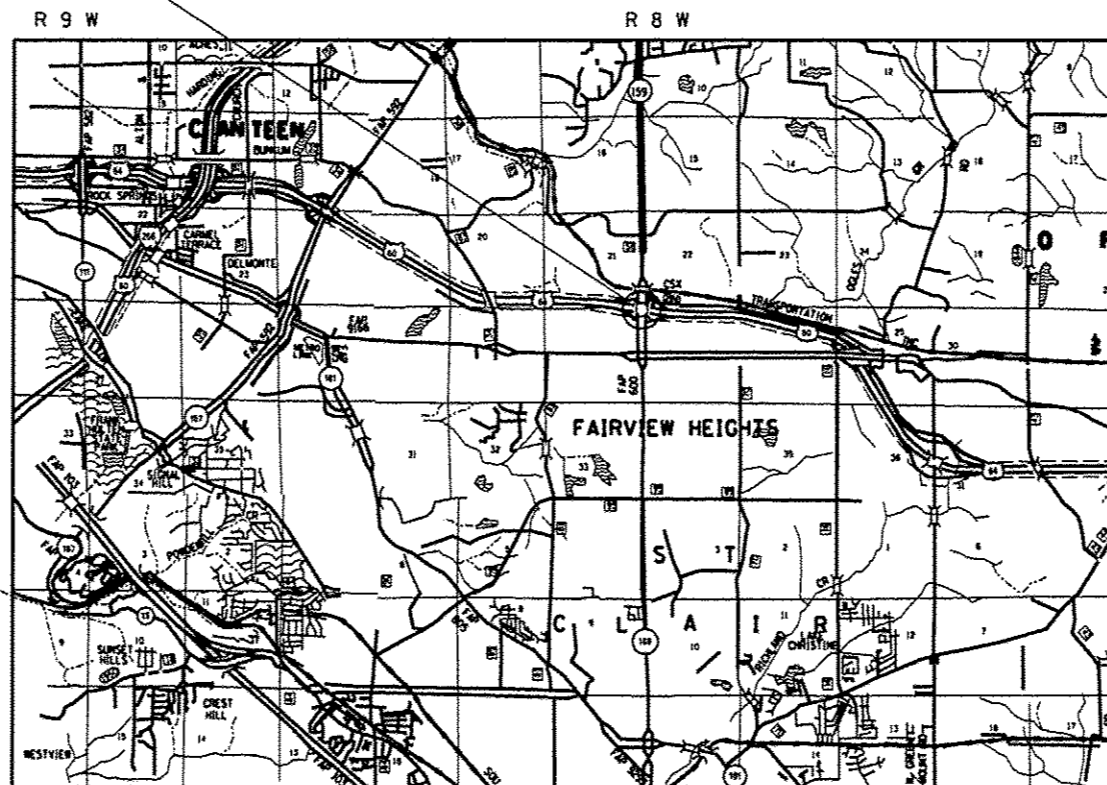
DESIGN DESIGNATION  
 N/A

PROJECT LOCATION  
 IL 159 OVER I-64  
 SN 082-0176



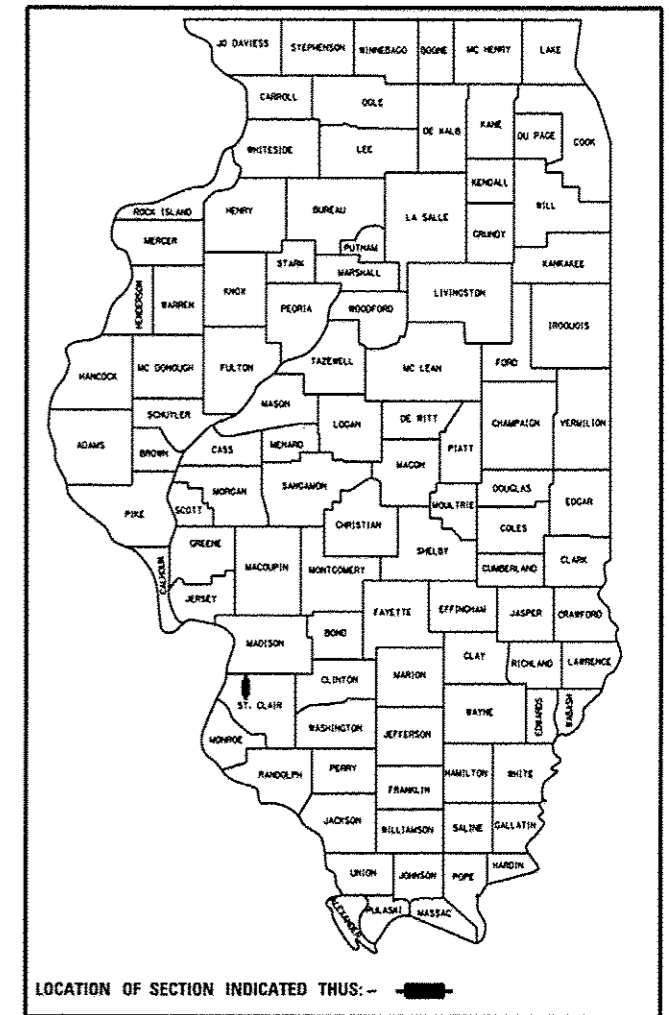
FULL SIZE PLANS HAVE BEEN PREPARED USING STANDARD ENGINEERING SCALES. REDUCED SIZED PLANS WILL NOT CONFORM TO STANDARD SCALES. IN MAKING MEASUREMENTS ON REDUCED PLANS, THE ABOVE SCALES MAY BE USED.

J.U.L.I.E.  
 JOINT UTILITY LOCATION INFORMATION FOR EXCAVATION  
 1-800-892-0123  
 OR 811



LATITUDE: 38.59901°  
 LONGITUDE: 89.98481°

GROSS LENGTH = 0.044 MI



STATE OF ILLINOIS  
 DEPARTMENT OF TRANSPORTATION  
 DIVISION OF HIGHWAYS

SUBMITTED March 29 20 13  
Jeffrey L. Keim  
 DEPUTY DIRECTOR OF HIGHWAYS, REGION 5 ENGINEER

April 26 20 13  
John D. Baranelli, P.E.  
 acting ENGINEER OF DESIGN AND ENVIRONMENT

April 26 20 13  
Omer Osman, P.E.  
 DIRECTOR OF HIGHWAYS, CHIEF ENGINEER

PROJECT ENGINEER: PATTI LeBEAU (618) 346-3179  
 PROJECT MANAGER: REBECCA THARP (618) 346-3323

CONTRACT NO. 76G33

PRINTED BY THE AUTHORITY  
 OF THE STATE OF ILLINOIS

INDEX OF SHEETS

- 1 COVER SHEET
- 2 INDEX OF SHEETS, HIGHWAY STANDARDS, COMMITMENTS & GENERAL NOTES
- 3 SUMMARY OF QUANTITIES
- 4 FRAMING PLAN
- 5-11 EXISTING STRUCTURE DETAILS
- 12 TRAFFIC CONTROL DETAIL SHEET

STANDARDS

- 000001-06
- 001006
- 701400-06
- 701401-07
- 701411-08
- 701446-04
- 701901-02

COMMITMENTS

NONE

GENERAL NOTES

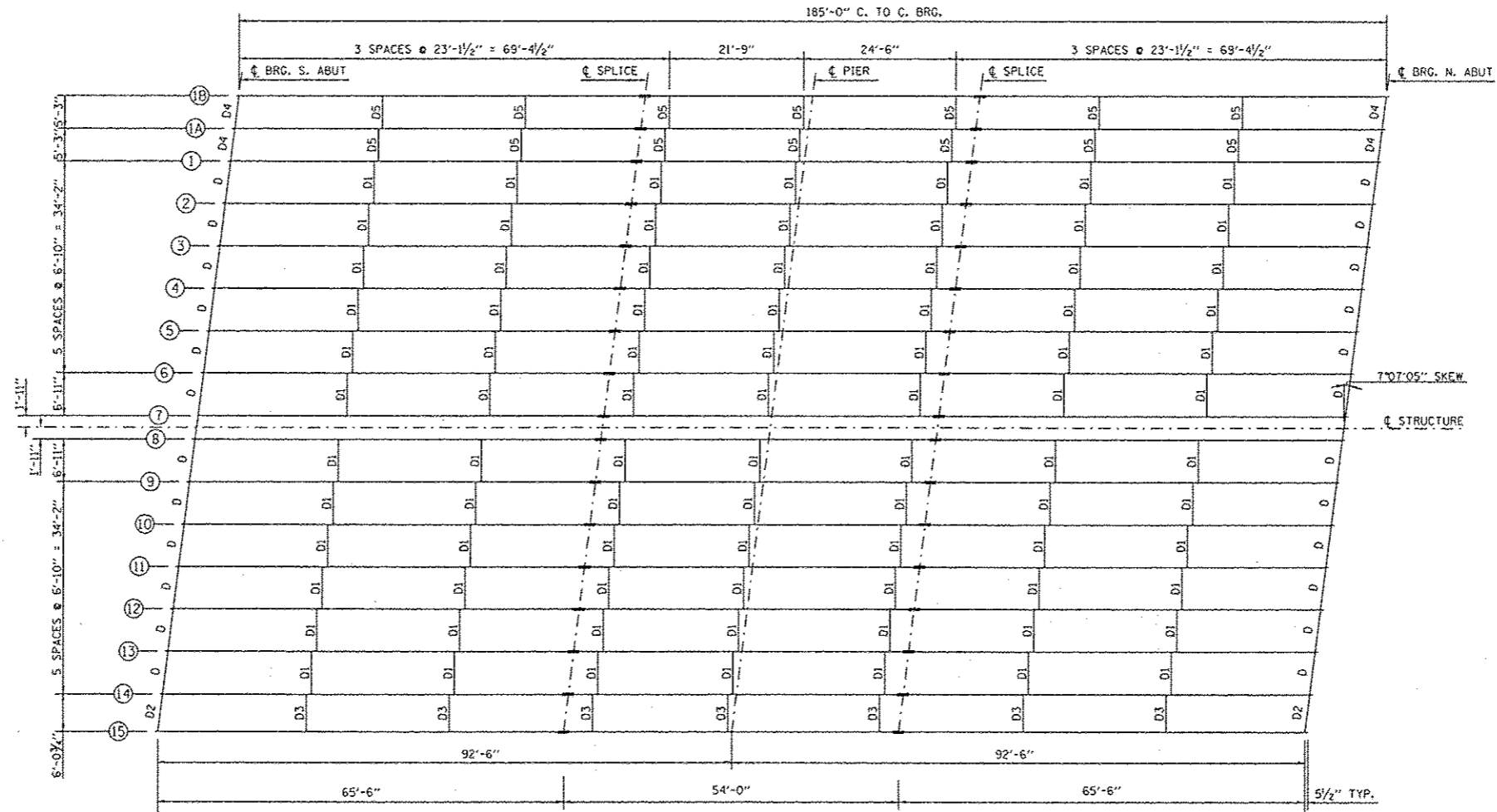
1. ILLINOIS STATE LAW REQUIRES A 48-HOUR NOTICE TO BE GIVEN TO UTILITIES BEFORE DIGGING. FIELD MARKING OF FACILITIES MAY BE OBTAINED BY CONTACTING J.U.L.I.E (1-800-892-0123 OR 811) OR FOR NON-MEMBERS, THE UTILITY COMPANY DIRECTLY.
2. UTILITY INTERFERENCES ARE NOT ANTICIPATED ON THIS CONTRACT. IT SHALL BE THE CONTRACTOR'S RESPONSIBILITY TO COORDINATE HIS CONSTRUCTION ACTIVITIES WITH THE VARIOUS UTILITY OWNERS. ALL POTENTIAL CONFLICTS SHALL BE INVESTIGATED AND REMEDIAL ACTION TAKEN PRIOR TO INTERRUPTION OF THE CONTRACTOR'S PROGRESS. NO ADDITIONAL COST SHALL BE ADDED TO THE CONTRACT RESULTING FROM UTILITY CONFLICTS.
3. A MINIMUM OF TWO AIR MONITORS WILL BE REQUIRED AT SN 082-0176 TO MONITOR ABRASIVE BLASTING OPERATION, SEE SPECIAL PROVISIONS FOR "CONTAINMENT AND DISPOSAL OF LEAD PAINT CLEANING RESIDUES."
4. THE SSPC-OP1 AND SSPC-OP2 CERTIFICATIONS WILL BE REQUIRED FOR THE BRIDGE.
5. CLEANING AND PAINTING OF THE EXISTING STRUCTURAL STEEL SHALL BE AS SPECIFIED IN THE SPECIAL PROVISION FOR "CLEANING AND PAINTING EXISTING STEEL STRUCTURES". ALL EXISTING STEEL STRUCTURES SHALL BE CLEAN PER NEAR WHITE BLAST CLEANING- SSPC-SP10. ALL EXISTING STEEL SHALL BE PAINTED ACCORDING TO THE REQUIREMENTS OF PAINT SYSTEM 1-OZ/E/U. THE COLOR OF THE FINAL FINISH COAT FOR ALL INTERIOR STEEL SURFACES SHALL BE GRAY, MUNSELL NO 5B 7/1.
6. PLEASE NOTE, THERE ARE A TOTAL OF 17 EXISTING GIRDERS AND ONLY GIRDERS 1 THROUGH 15 ARE TO BE PAINTED AS PART OF THIS CONTRACT. IF ANY DAMAGE TO THE PAINT SYSTEM FROM CLEANING OPERATIONS IS INCURRED TO GIRDERS 1A & 1B, THE CONTRACTOR IS RESPONSIBLE FOR CORRECTIVE MEASURES TO THE SATISFACTION OF THE RESIDENT ENGINEER/TECHNICIAN.
7. ALL TURF AREA DISTURBED BY THE CONTRACTOR SHALL BE SEEDED WITH THE APPROPRIATE EROSION CONTROL AS DIRECTED BY THE RESIDENT ENGINEER/TECHNICIAN AT THE CONTRACTOR'S EXPENSE.
8. THE USE OF CONES SHALL NOT BE PERMITTED AT THIS LOCATION.
9. "ROAD CONSTRUCTION AHEAD" SIGNS SHALL BE PLACED AT EACH END OF THE PROJECT LOCATIONS AND ALL INTERSECTING SIDE ROADS AND WILL BE INCLUDED IN THE TRAFFIC CONTROL PAY ITEMS. ALL CONSTRUCTION SIGNS SHALL BE FLUORESCENT ORANGE. 48".
10. TWO ADDITIONAL CHANGEABLE MESSAGE SIGNS SHALL BE PLACED ON THE NORTH AND SOUTH BOUND OF IL ROUTE 159. THESE SIGNS WILL BE PAID FOR AS "CHANGEABLE MESSAGE SIGNS".
11. CHANGEABLE MESSAGE SIGNS SHALL BE PLACED TWO (2) WEEKS PRIOR TO ANY LANE RESTRICTIONS AS DIRECTED BY THE RESIDENT ENGINEER/TECHNICIAN.
12. THE DEPARTMENT STRONGLY ENCOURAGES THE PRIME CONTRACTOR AND THEIR APPROVED SUB-CONTRACTORS TO HIRE MINORITY, WOMEN AND DISADVANTAGED INDIVIDUALS FROM ITS FEDERALLY FUNDED HIGHWAY CONSTRUCTION CAREERS TRAINING PROGRAM (HCCTP) TO HELP MEET WORKFORCE AND TRAINEE GOALS. THIS PROGRAM IS TRAINING MINORITIES, WOMEN AND DISADVANTAGED INDIVIDUALS IN HIGHWAY CONSTRUCTION-RELATED SKILLS, E.G., MATH FOR THE TRADES, JOB READINESS, TECHNICAL SKILLS COURSE WORK (CARPENTRY, CONCRETE FLATWORK, BLUEPRINT READING, SITE PLANS, SITE WORK, TOOLS USE, ETC.) AND OSHA 10 HOUR CERTIFICATION, TO PREPARE THEM FOR A CAREER IN THE HIGHWAY CONSTRUCTION TRADES. GRADUATES ARE WELL- TRAINED AND READY TO BECOME PRODUCTIVE ENTRY-LEVEL CONSTRUCTION WORKERS. CONTACT THE DISTRICT 8 EEO OFFICE AT 618-346-3360 AND/OR THE HCCTP COORDINATOR AT 618-874-6528 TO LEARN MORE ABOUT THE PROGRAM AND FOR ASSISTANCE IN MEETING WORKFORCE AND TRAINEE GOALS.

I-64 LANE SCHEDULE

MINIMUM NUMBER OF LANES TO BE LEFT OPEN SUNDAY - SATURDAY																									
	12:00 AM	1:00 AM	2:00 AM	3:00 AM	4:00 AM	5:00 AM	6:00 AM	7:00 AM	8:00 AM	9:00 AM	10:00 AM	11:00 AM	12:00 PM	1:00 PM	2:00 PM	3:00 PM	4:00 PM	5:00 PM	6:00 PM	7:00 PM	8:00 PM	9:00 PM	10:00 PM	11:00 PM	12:00 AM
I-64 EASTBOUND	1 LANE OPEN							2 LANES OPEN							ALL LANES OPEN							1 LANE OPEN			
I-64 WESTBOUND	1 LANE OPEN							ALL LANES OPEN							2 LANES OPEN							ALL LANES OPEN			1 LANE OPEN

FILE NAME :	USER NAME :	DESIGNED :	REVISED :	<b>STATE OF ILLINOIS DEPARTMENT OF TRANSPORTATION</b>	INDEX OF SHEETS, GENERAL NOTES, HIGHWAY STANDARDS & COMMITMENTS	F.A.I RTE.	SECTION	COUNTY	TOTAL SHEETS	SHEET NO.	
c:\pwwork\p\p\dot\harbaugh\d\0236835\0276633-shr-genote.dgn		DRAWN :	REVISED :			64	82-5HG-3-P	ST. CLAIR	12	2	
#MODELNAME#	PLOT SCALE :	CHECKED :	REVISED :			SCALE: N/A	SHEET 1	OF 1	SHEETS	STA.	TO STA.
	PLOT DATE :	DATE :	REVISED :								

CODE NO.	ITEM	UNIT	TOTAL QUANTITY	CONSTR. CODE
				100% STATE
				URBAN ROADWAY
				0014 S. N.
67100100	MOBILIZATION	L SUM	1	1
70100205	TRAFFIC CONTROL AND PROTECTION, STANDARD 701401	EACH	2	2
70100420	TRAFFIC CONTROL AND PROTECTION, STANDARD 701411	EACH	4	4
70100430	TRAFFIC CONTROL AND PROTECTION, STANDARD 701446	EACH	2	2
70106800	CHANGEABLE MESSAGE SIGN	CAL MO	3	3
70200100	NIGHTTIME WORK ZONE LIGHTING	L SUM	1	1
X7010218	TRAFFIC CONTROL AND PROTECTION, (SPECIAL)	EACH	2	2
Z0007101	CONTAINMENT AND DISPOSAL OF LEAD PAINT CLEANING RESIDUES NO. 1	L SUM	1	1
Z0010501	CLEANING AND PAINTING STEEL BRIDGE NO. 1	L SUM	1	1



1970 - ORIGINAL CONSTRUCTION (BEAMS 1 TO 14)  
 1998 - RECONSTRUCTED BY ADDING BEAM 15  
 2011 - RECONSTRUCTED BY ADDING BEAMS 1A & 1B

NOTE: BEAMS 1 THRU 15 ARE TO BE PAINTED. DIAPHRAGMS D, D1, D2, AND D3 ARE TO BE PAINTED. BEAMS 1A AND 1B AND DIAPHRAGMS D4 AND D5 ARE NOT TO BE PAINTED.

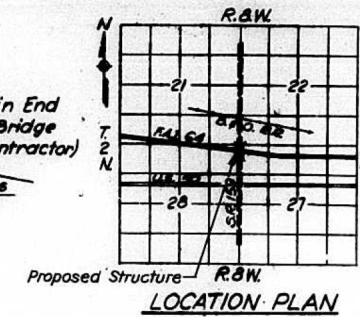
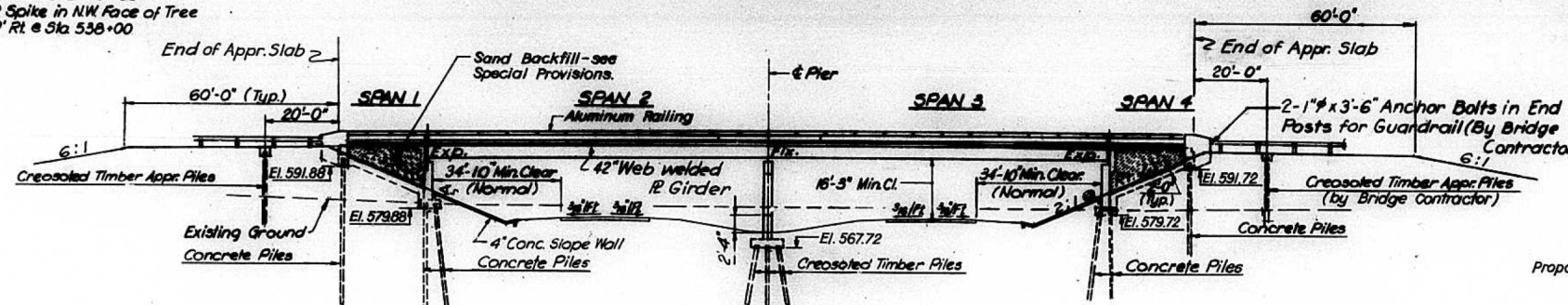
NOT TO SCALE

FILE NAME = c:\pwwork\p\idot\tharpri\08336836\d076	USER NAME = tharpri	DESIGNED -	REVISED -	<b>STATE OF ILLINOIS DEPARTMENT OF TRANSPORTATION</b>	<b>FRAMING PLAN</b>			F.A.I. RTE.	SECTION	COUNTY	TOTAL SHEETS	SHEET NO.
	37-shi-plan.dgn	DRAWN -	REVISED -					64	82-SHB-3-P	ST. CLAIR	12	4
PLOT SCALE = 100.0000' / 1"	CHECKED -	REVISED -	SCALE: N/A		SHEET NO. 1 OF 1 SHEETS	STA.	TO STA.	FED. ROAD DIST. NO. [ILLINOIS] FED. AID PROJECT				
PLOT DATE = 2/29/2013	DATE -	REVISED -					CONTRACT NO. 76G33					



B.M. No 23, El. 581.723  
RR Spike in NW Face of Tree  
722' Rt. @ Sta. 538+00

ROUTE NO.	SECTION	COUNTY	TOTAL SHEETS	SHEET NO.
F.A.I.-64	82-5HB-3	ST. CLAIR	126	32
FED. ROAD DIV. NO. 4		ILLINOIS	PROJECT I-64-1(30)8	

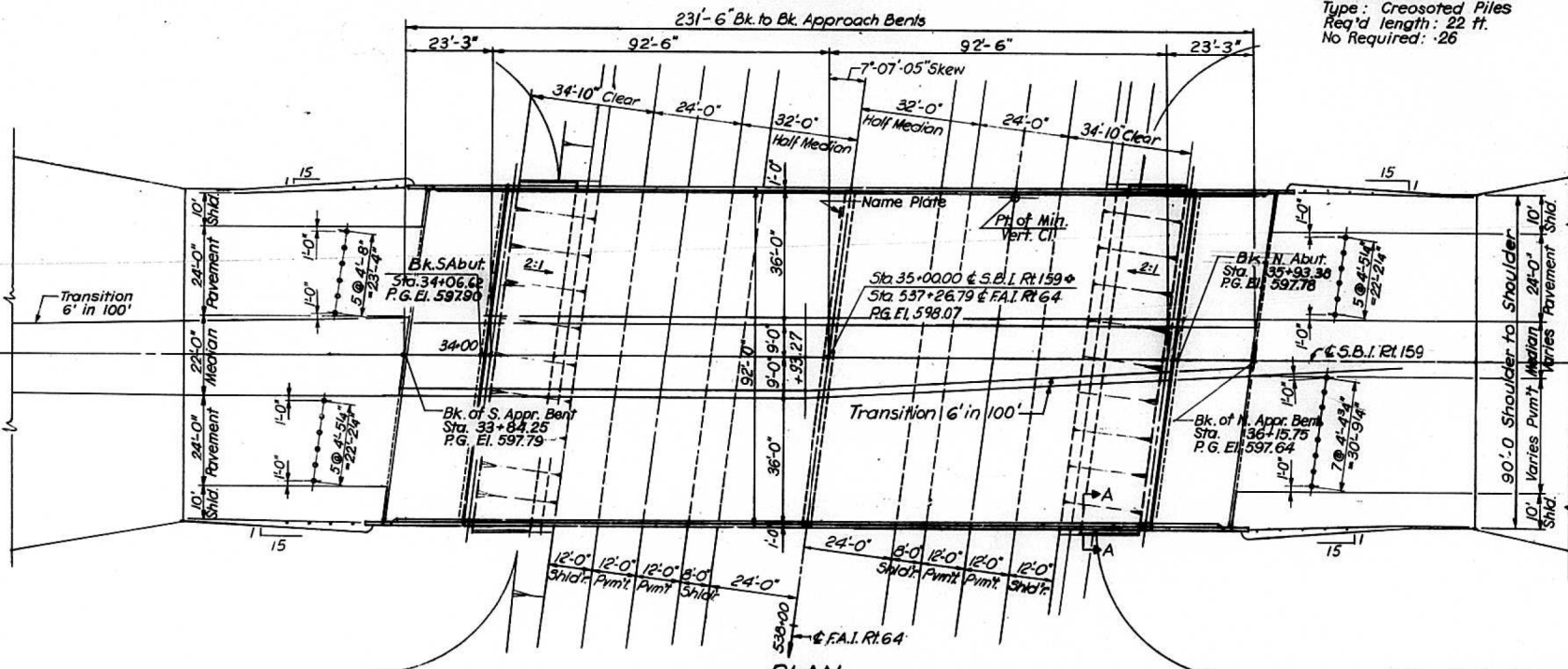


**ELEVATION**  
Scale: 1"=20'

**APPROACH PILE DATA**  
Type: Creosoted Piles  
Req'd length: 22 ft.  
No Required: 26

STATION 537+26.79  
BUILT 197 BY  
STATE OF ILLINOIS  
F.A.I. RT. 64 SEC. 82-5HB-3  
F.A.I. PROJ. I-64-1(30)  
LOADING HS20

**NAME PLATE**  
See Sld. 2113

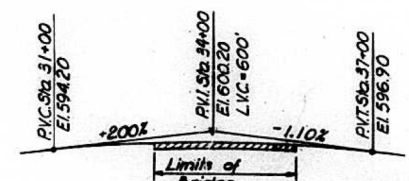
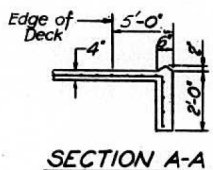
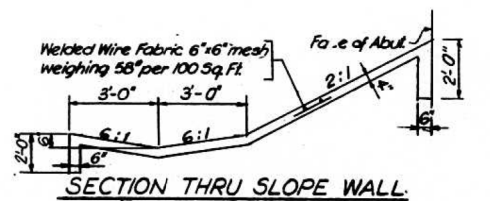


**PLAN**  
Scale: 1"=20'

NOTE: All sheet No. references are made to lower right hand corner sheet numbers.

**TOTAL BILL OF MATERIAL**

Item	Unit	Super	Sub	Total
Structure Excavation	Cu Yds	—	231.0	231.0
Class X Concrete	Cu Yds	609.5	491.9	1,101.4
Protective Coat	Sq Yds	2,486	—	2,486
Furnishing and Erecting Structural Steel	Lump Sum	0.5	—	0.5
Reinforcement Bars	Lbs	174,200	47,220	221,420
Furnishing Creosoted Piles (over 38')	Lin. Ft.	—	2,760	2,760
Driving Timber Piles	Lin. Ft.	—	3,332	3,332
Test Pile Timber	Ea.	—	1	1
Furnishing Concrete Piles	Lin. Ft.	—	5,100	5,100
Driving Concrete Piles	Lin. Ft.	—	5,100	5,100
Test Pile Concrete	Ea.	—	1	1
Name Plates	Ea.	—	1	1
Slope Wall 4'	Sq Yds	—	661	661
Aluminum Railing	Lin. Ft.	453	—	453
Preformed Joint Sealer	Lin. Ft.	184	—	184
Stud Shear Connectors	Each	5,720	—	5,720
Sand Backfill	Cu Yds.	—	845	845
Furnishing Creosoted Piles (20.1 to 38')	Lin. Ft.	—	572	572



**DESIGN STRESSES AND LOADS**

Allowable F.W.S. = 25 ps/ft.  
 $f_c = 1200$  psi Deck Slab Spans 2 & 3  
 $f_c = 1,400$  psi Deck Slab Spans 1 & 4  
 4' Curb, parapet and Substructure  
 $f_s = 20,000$  psi Structural Steel (A-36)  
 $f_s = 20,000$  psi Reinforcement  
 $v = 75$  psi Footings  
 LIVE LOAD DEFLECTION:  $\frac{1}{200}$  (Composite)

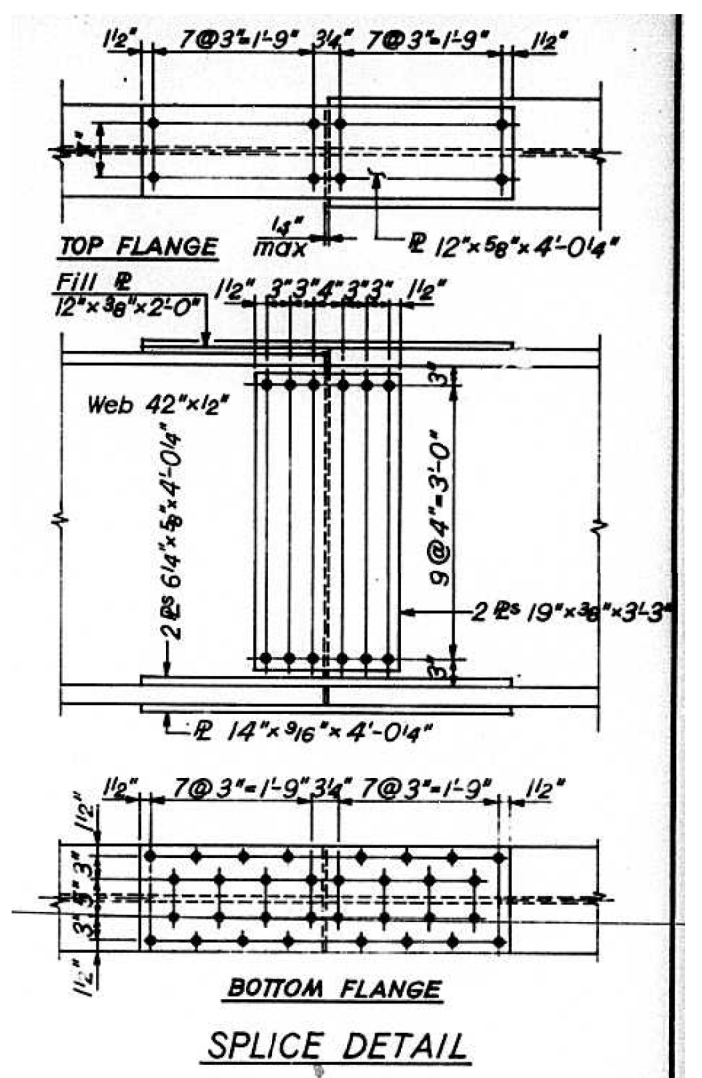
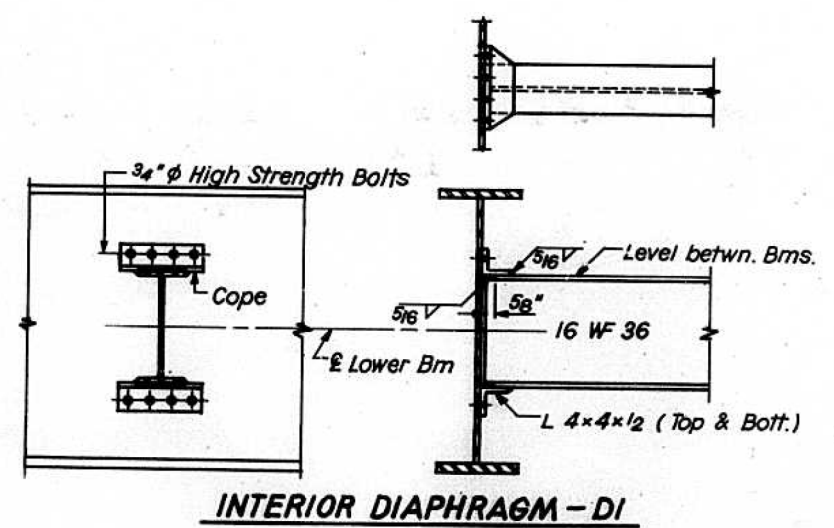
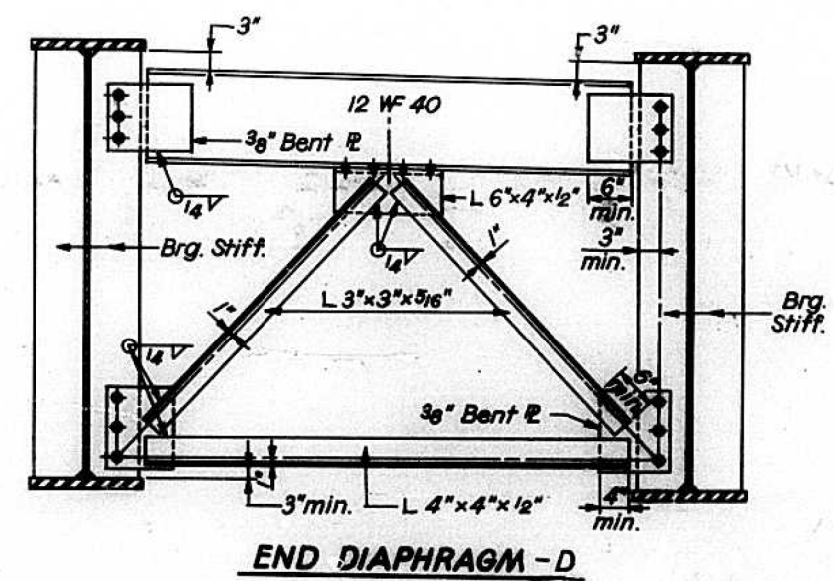
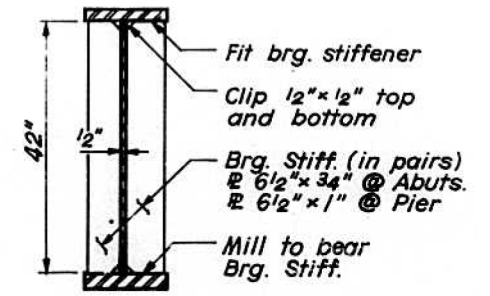
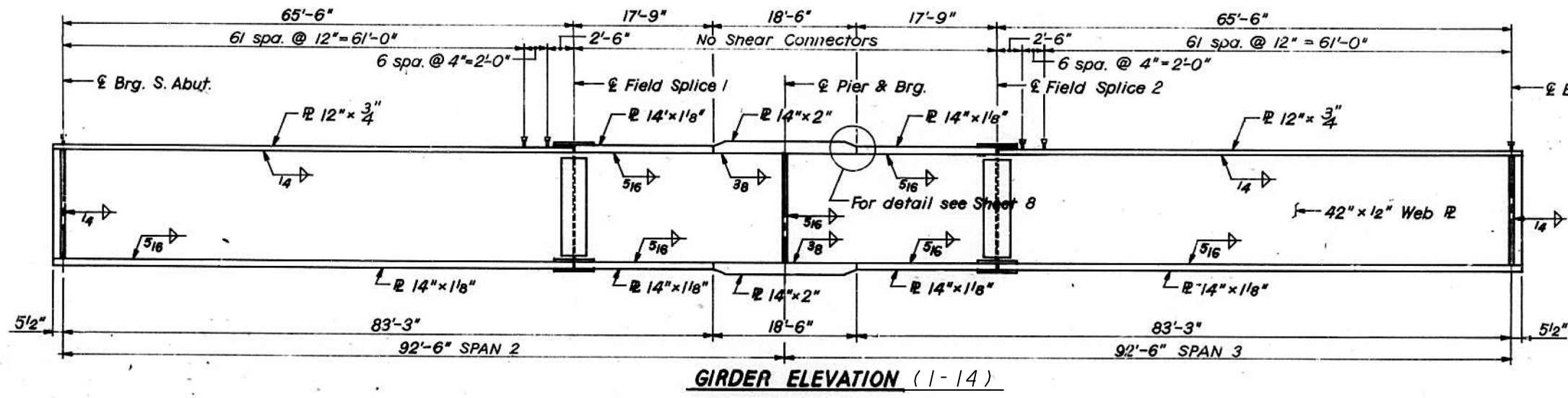
STATE OF ILLINOIS  
 GENERAL PLAN  
 S. B. I. ROUTE 159 OVER F. A. I. ROUTE 64  
 STATION 537 + 26.79  
 F. A. I. RT. 64 ST. CLAIR COUNTY SECTION 82-5HB-3  
 H. W. LOCHNER, INC.  
 ENGINEERS  
 CHICAGO, ILLINOIS

DESIGNED BY: H.N.  
 DRAWN BY: E.F. & B.B.  
 CHECKED BY: V.B.

Rev. Slope Wall 4" from 608 Sq Yds. to 661 Sq Yds. 11-5-71 J.M.J.

FOR INFORMATION ONLY  
 1970 ORIGINAL CONSTRUCTION

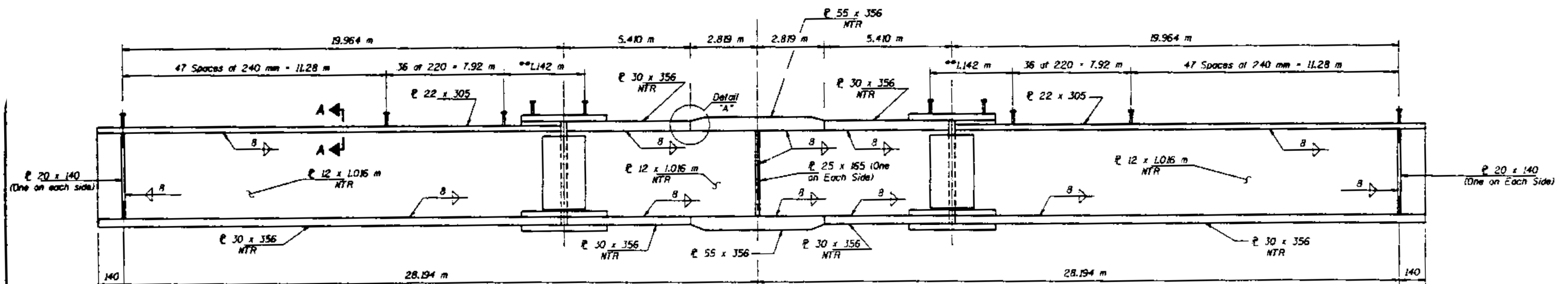
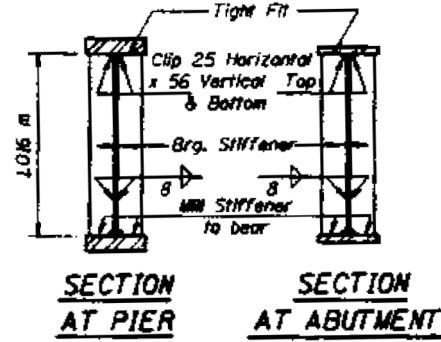
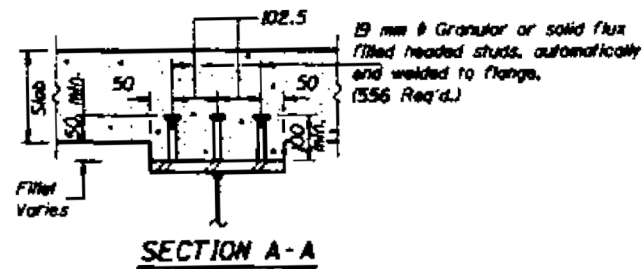
FILE NAME =	USER NAME = harbaughrd	DESIGNED -	REVISED -	STATE OF ILLINOIS DEPARTMENT OF TRANSPORTATION	EXISTING STRUCTURE DETAILS	F.A.I. RTE.	SECTION	COUNTY	TOTAL SHEETS	SHEET NO.
et:\pwork\pwork\harbaughrd\0336836\876g33-shr-plan.dgn	DRAWN -	REVISED -	64			82-5HB-3-P	ST. CLAIR	12	5	
PLOT SCALE = 100.0000' / in.	CHECKED -	REVISED -	CONTRACT NO. 76G33							
PLOT DATE = 3/29/2013	DATE -	REVISED -	FED. ROAD DIST. NO.			ILLINOIS	FED. AID PROJECT			



NOT TO SCALE

FOR INFORMATION ONLY  
1970 ORIGINAL CONSTRUCTION

FILE NAME =	USER NAME = harbaughrd	DESIGNED -	REVISED -	<b>STATE OF ILLINOIS DEPARTMENT OF TRANSPORTATION</b>	<b>EXISTING STRUCTURE DETAILS</b>			F.A.I. RTE. =	SECTION =	COUNTY =	TOTAL SHEETS =	SHEET NO. =	
et:\pwork\pwork\harbaughrd\0336836\076g33-sht-plan.dgn		DRAWN -	REVISED -		SCALE: N/A	SHEET NO. 2 OF 7 SHEETS	STA.	TO STA.	64	82-5HB-3-P	ST. CLAIR	12	6
PLOT SCALE = 100.0000' / 1"		CHECKED -	REVISED -					CONTRACT NO. 76G33					
PLOT DATE = 3/29/2013		DATE -	REVISED -					FED. ROAD DIST. NO. ILLINOIS FED. AID PROJECT					



GIRDER ELEVATION (15)

Notes: Two hardened washers shall be required over all oversize holes for diaphragms.  
 All dimensions are in millimeters (mm) except as noted.  
 "N.T.R." denotes members to which Notch Toughness Requirements are applicable.  
 \*\*See Top Flange Splice Sht. 13 of 25 for Details of spacing for shear studs on Top Plate.

NOT TO SCALE

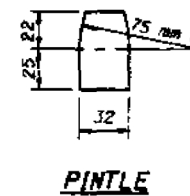
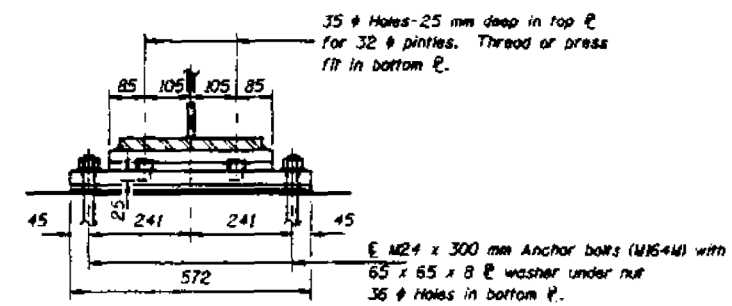
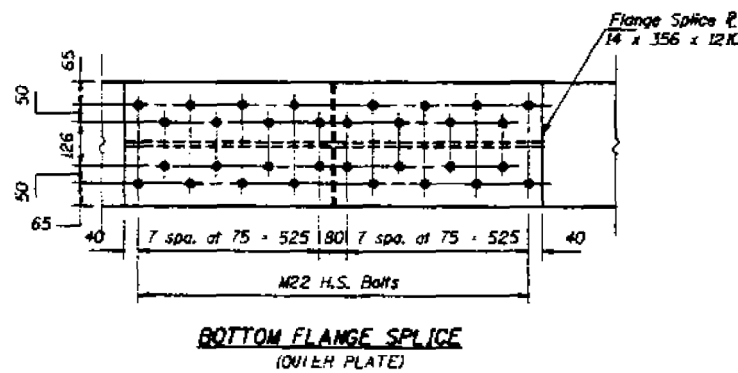
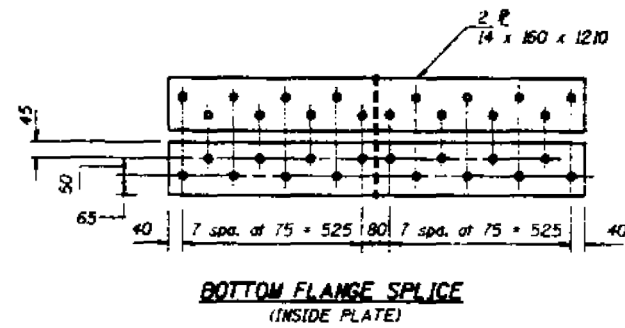
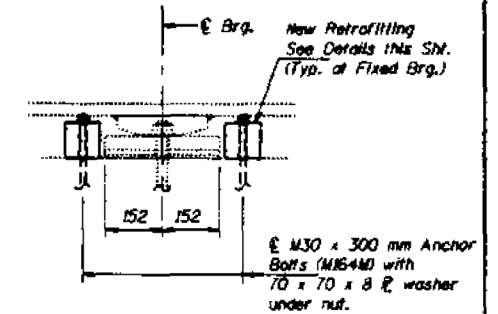
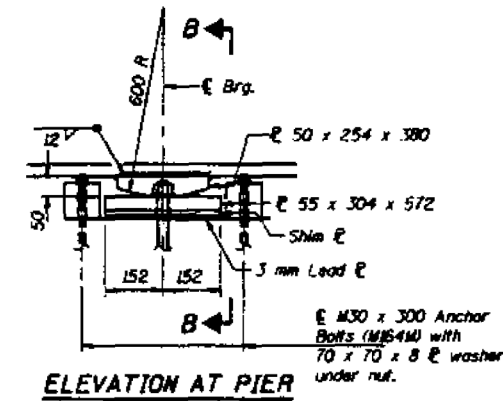
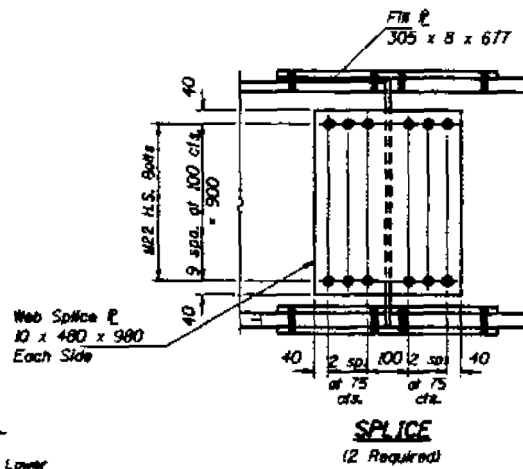
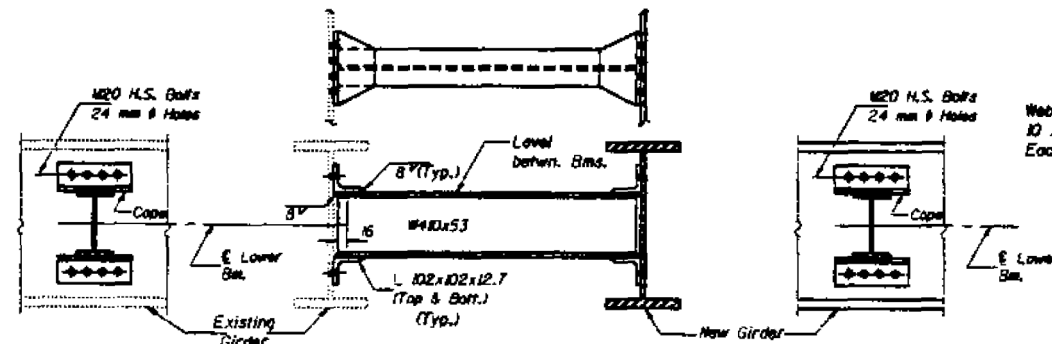
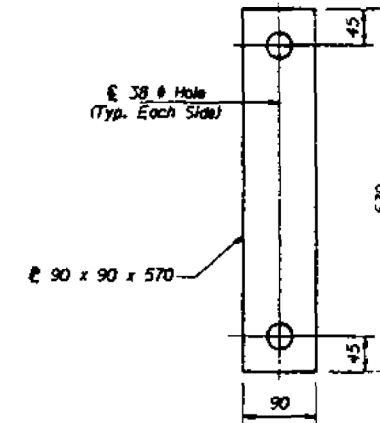
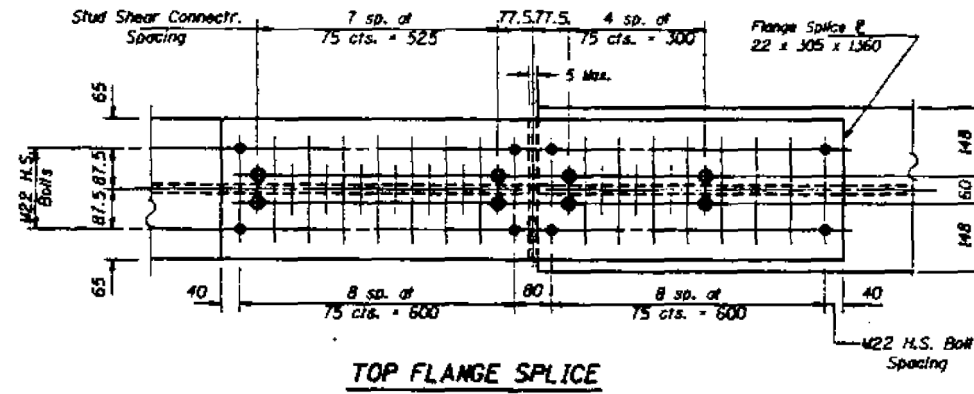
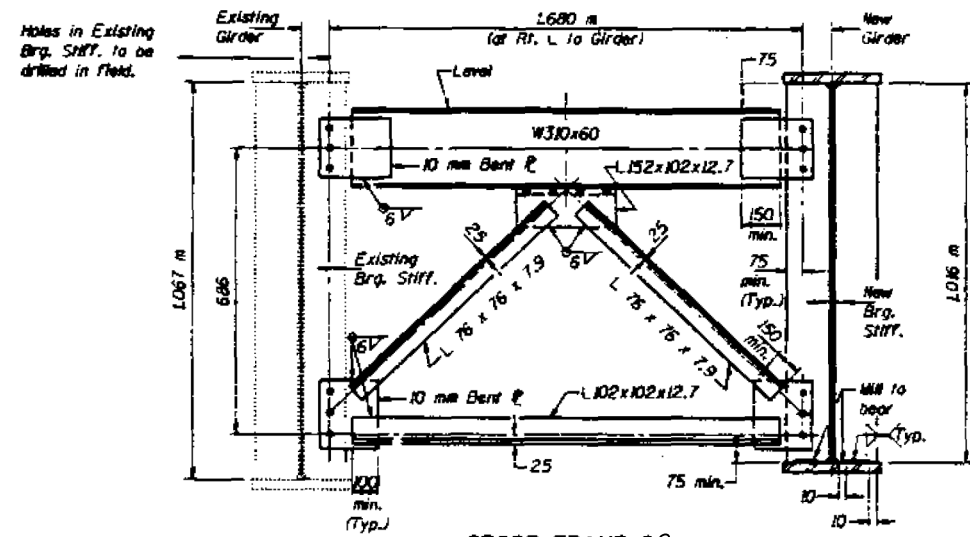
FOR INFORMATION ONLY  
 1998 RECONSTRUCTION

NOTE: PLANS ARE IN METRIC.

FILE NAME =	USER NAME = #USER*	DESIGNED -	REVISED -	<b>STATE OF ILLINOIS DEPARTMENT OF TRANSPORTATION</b>	<b>EXISTING STRUCTURE DETAILS</b>			F.A.I. RTE.	SECTION	COUNTY	TOTAL SHEETS	SHEET NO.
#FILE#		DRAWN -	REVISED -					64	82-5HB-3-P	ST. CLAIR	12	7
	PLOT SCALE = #SCALE*	CHECKED -	REVISED -		SCALE: N/A			SHEET NO. 3 OF 7 SHEETS			STA.	TO STA.
	PLOT DATE = #DATE*	DATE -	REVISED -		CONTRACT NO. 76G33			FED. ROAD DIST. NO. ILLINOIS FED. AID PROJECT				

STATE OF ILLINOIS  
DEPARTMENT OF TRANSPORTATION

ST. CLAIR	116	95	SHEET NO. 13
25 SHEETS			



DESIGNED: <i>[Signature]</i>	DATE: 10/96
CHECKED: <i>[Signature]</i>	DATE: 10/96
DRAWN: <i>[Signature]</i>	DATE: 10/96
CHECKED: <i>[Signature]</i>	DATE: 10/96

STRUCTURAL AND BEARING DETAILS  
F.A.R. ROUTE 600- SECTION 82-5K-1  
ST. CLAIR COUNTY  
STATION 1+066.80

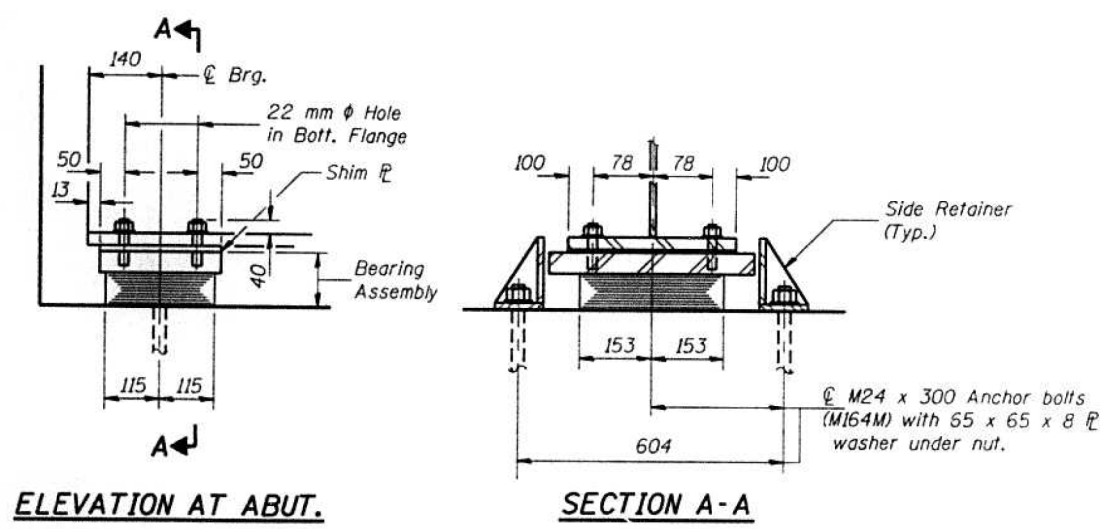
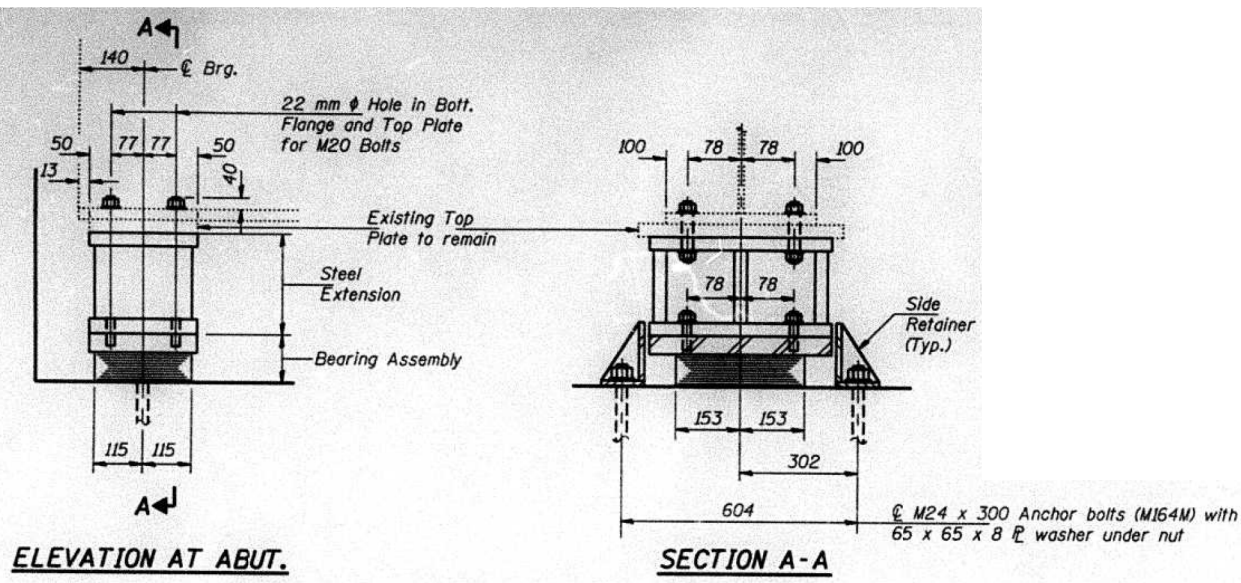
NOT TO SCALE

FOR INFORMATION ONLY  
1998 RECONSTRUCTION

NOTE: PLANS ARE IN METRIC.

FILE NAME =	USER NAME = USER*	DESIGNED -	REVISED -	STATE OF ILLINOIS DEPARTMENT OF TRANSPORTATION	EXISTING STRUCTURE DETAILS			F.A.I. RTE.	SECTION	COUNTY	TOTAL SHEETS	SHEET NO.	
#FILE#		DRAWN -	REVISED -		SCALE: N/A	SHEET NO. 4 OF 7 SHEETS	STA.	TO STA.	64	82-5HB-3-P	ST. CLAIR	12	8
		CHECKED -	REVISED -					CONTRACT NO. 76G33					
		PLOT SCALE = #SCALE#	REVISED -					FED. ROAD DIST. NO. ILLINOIS FED. AID PROJECT					
		PLOT DATE = #DATE#	REVISED -										

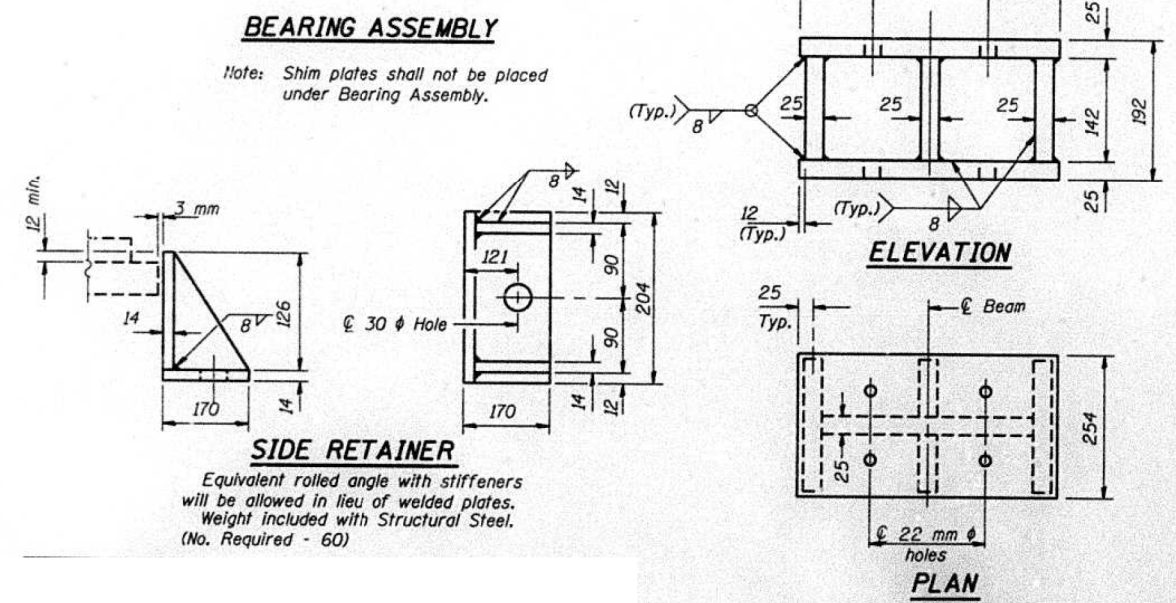
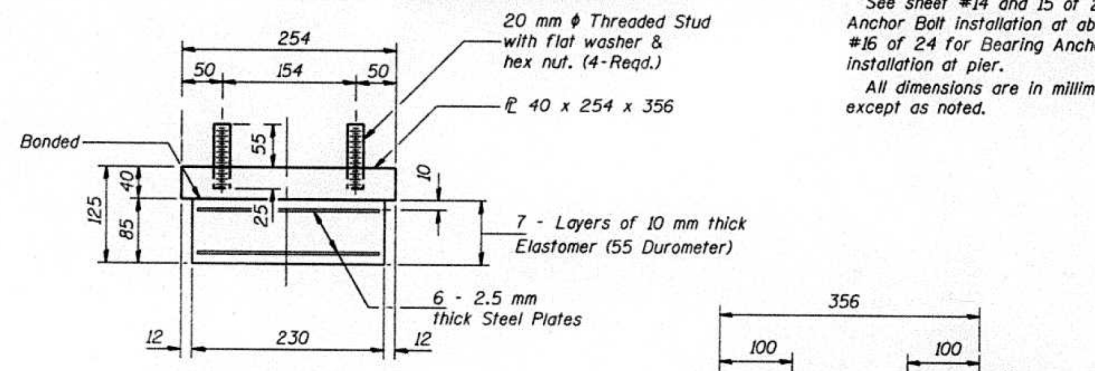




**TYPE I ELASTOMERIC EXP. BRG. GIRDERS NO. 1 THRU NO. 14**

Notes: Anchor bolts at fixed bearings may be built into the masonry.  
See sheet #14 and 15 of 24 for Bearing Anchor Bolt installation at abutments and #16 of 24 for Bearing Anchor Bolt installation at pier.  
All dimensions are in millimeters (mm) except as noted.

**TYPE I ELASTOMERIC EXP. BRG. GIRDER NO. 15**



**SIDE RETAINER**  
Equivalent rolled angle with stiffeners will be allowed in lieu of welded plates. Weight included with Structural Steel. (No. Required - 60)

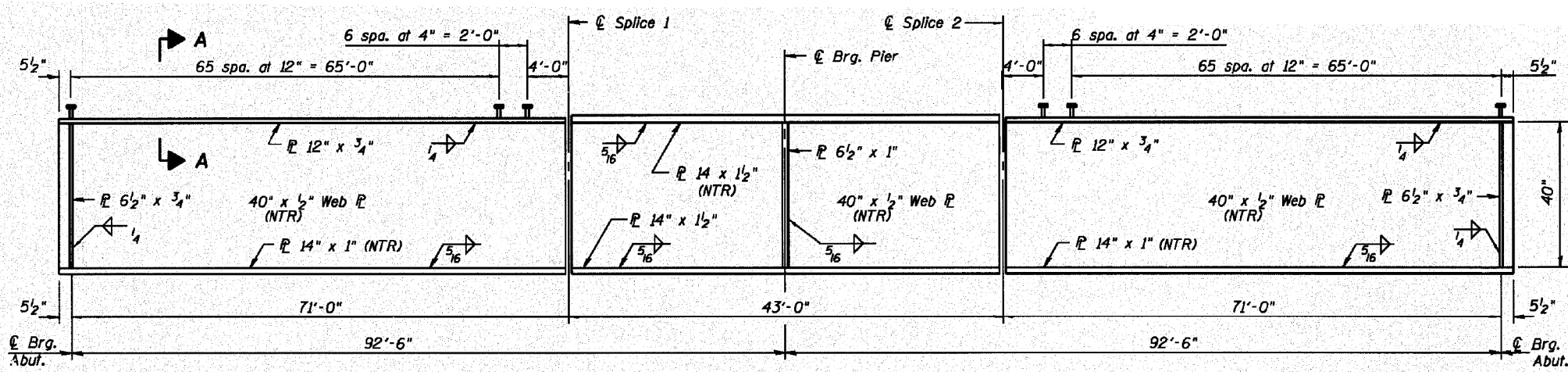
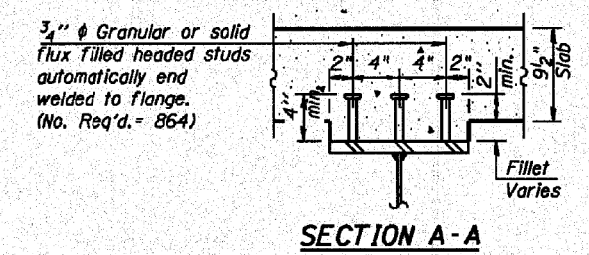
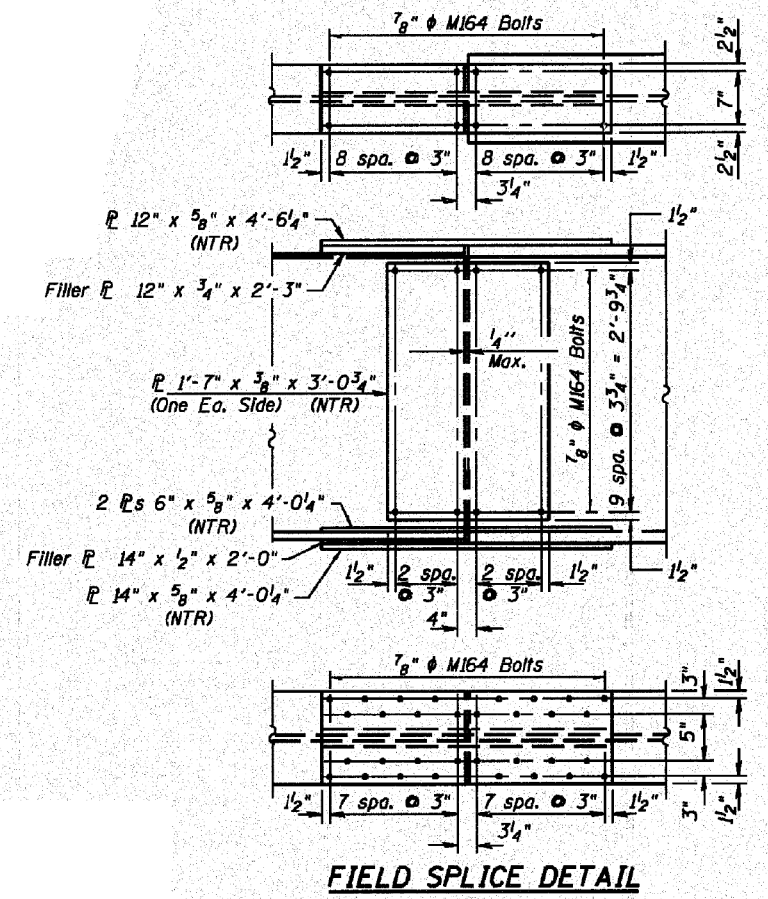
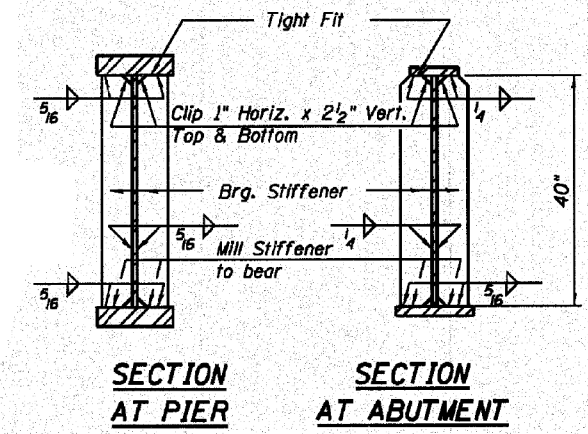
**FABRICATED STEEL EXTENSION**  
Weight included with Structural Steel. (No. Required - 28)

NOT TO SCALE

FOR INFORMATION ONLY  
1998 RECONSTRUCTION

NOTE: PLANS ARE IN METRIC.

FILE NAME =	USER NAME = *USER*	DESIGNED -	REVISED -	<b>STATE OF ILLINOIS DEPARTMENT OF TRANSPORTATION</b>	<b>EXISTING STRUCTURE DETAILS</b>			F.A.I. RTE.	SECTION	COUNTY	TOTAL SHEETS	SHEET NO.
*FILE#		DRAWN -	REVISED -					64	82-5HB-3-P	ST. CLAIR	12	9
PLOT SCALE = *SCALE*		CHECKED -	REVISED -		CONTRACT NO. 76G33							
PLOT DATE = *DATE*		DATE -	REVISED -		SCALE: N/A	SHEET NO. 5 OF 7 SHEETS	STA.	TO STA.	FED. ROAD DIST. NO.	ILLINOIS FED. AID PROJECT		



**GIRDER ELEVATION (1A-1B)**

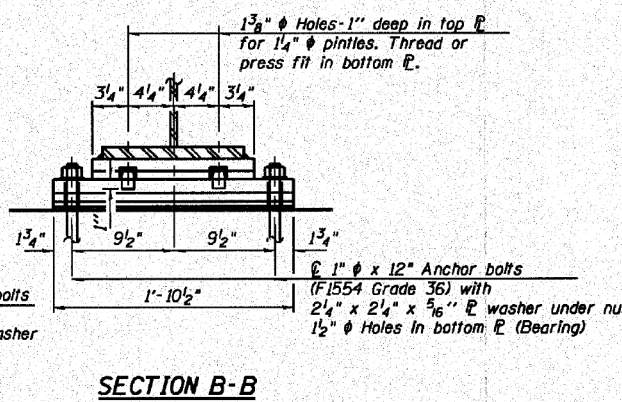
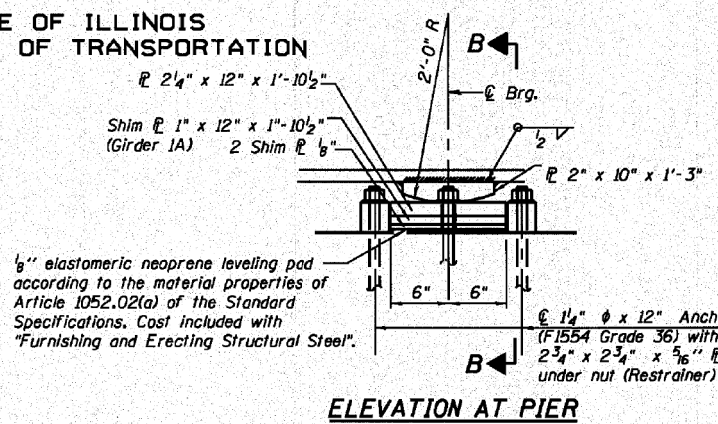
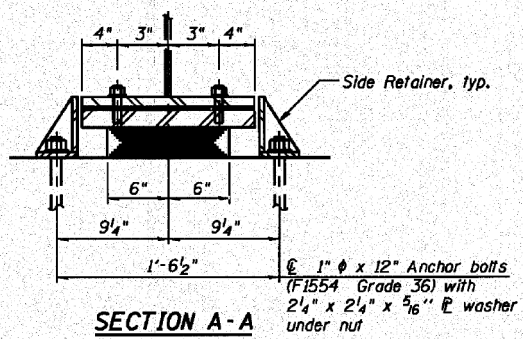
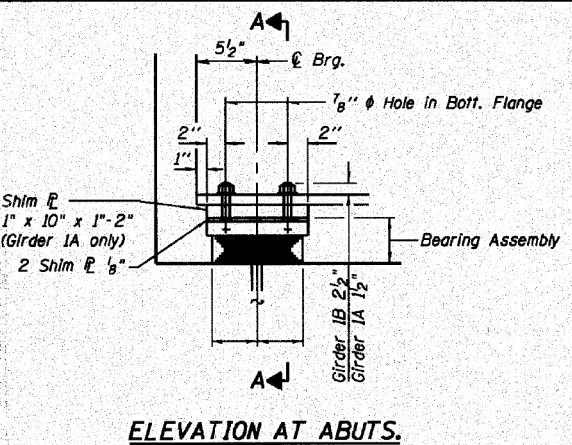
"NTR" denotes plates to which notch toughness requirements are applicable. The main load carrying members components subject to tensile stress shall conform to the Supplemental Requirements for Notch Toughness, Zone 2.

NOT TO SCALE

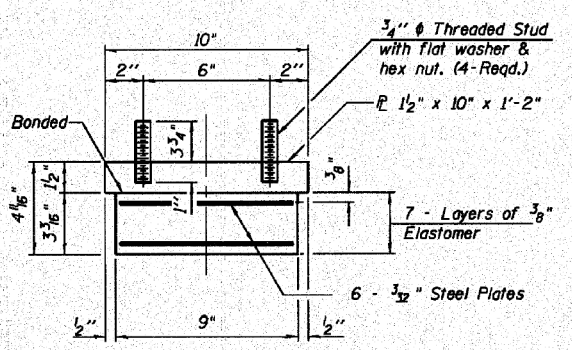
FOR INFORMATION ONLY  
2011 RECONSTRUCTION

FILE NAME =	USER NAME = harbaughrd	DESIGNED -	REVISED -	<b>STATE OF ILLINOIS DEPARTMENT OF TRANSPORTATION</b>	<b>EXISTING STRUCTURE DETAILS</b>			F.A.I. R.T.E.	SECTION	COUNTY	TOTAL SHEETS	SHEET NO.
et:\pwwork\pwwork\harbaughrd\d0336836\876g33-sh-t-plan.dgn	DRAWN -	REVISED -	REVISED -					64	82-5HB-3-P	ST. CLAIR	12	10
PLOT SCALE = 100.0000' / 1in.	CHECKED -	REVISED -	REVISED -		CONTRACT NO. 76G33							
PLOT DATE = 3/29/2013	DATE -	REVISED -	REVISED -		FED. ROAD DIST. NO.	ILLINOIS	FED. AID PROJECT					
				SCALE: N/A	SHEET NO. 6 OF 7 SHEETS	STA.	TO STA.					

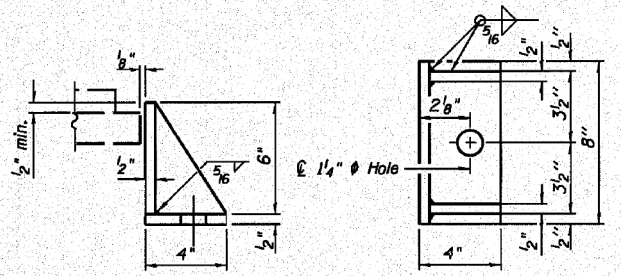
STATE OF ILLINOIS  
DEPARTMENT OF TRANSPORTATION



TYPE I ELASTOMERIC EXP. BRG.

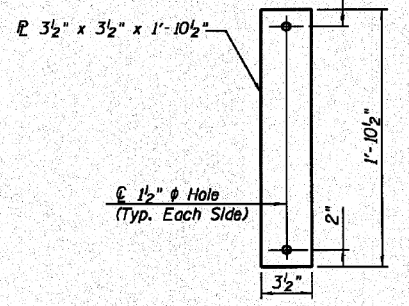


Note: Shim plates shall not be placed under Bearing Assembly.



Equivalent rolled angle with stiffeners will be allowed in lieu of welded plates.

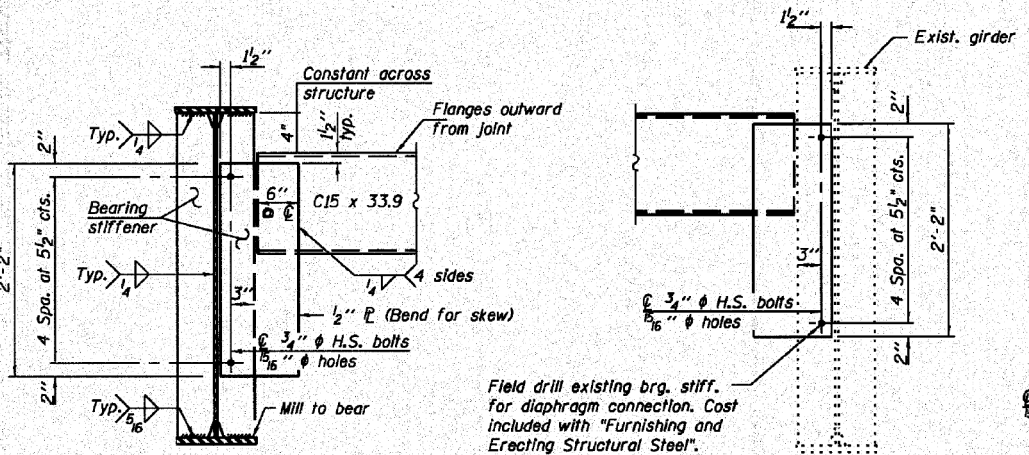
FIXED BEARING



Notes: Anchor bolts shall be ASTM F1554 all-thread (or an Engineer-approved alternate material) of the grade(s) and diameter(s) specified...

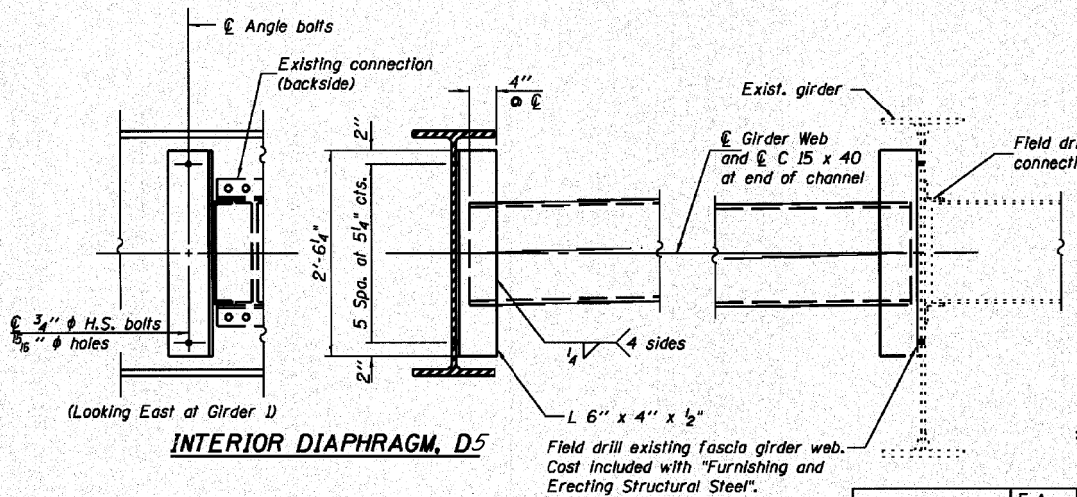
LONGITUDINAL RESTRAINER AT FIXED PIER

Longitudinal restrainer plates placed flushed next to base plate (Typ. each side) and shall be included with the cost of "Furnishing and Erecting Structural Steel".



Note: Two hardened washers required for each set of oversized holes.

WHKS ENGINEERING  
7018 KINGSMILL CT., SPRINGFIELD, IL (217) 483-9457  
DESIGN FIRM #184001036



Note: Two hardened washers required for each set of oversized holes. Alternate channels I 15 x 50 are permitted to facilitate material acquisition.

BILL OF MATERIAL

Item	Unit	Total
Elastomeric Bearing Assembly Type 1	Each	4
Anchor Bolts, 1"	Each	14
Anchor Bolts, 1 1/4"	Each	12

STRUCTURAL STEEL AND BEARING DETAILS  
STRUCTURE NO. 082-0176

SHEET NO. 14	F.A. RTE.	SECTION	COUNTY	TOTAL SHEETS	SHEET NO.
34 SHEETS	64	82-5K-2	ST. CLAIR	162	97
CONTRACT NO. 76D59					
ILLINOIS FED. AID PROJECT					

DESIGNED - TJZ
CHECKED - CWC
DRAWN - DLH
CHECKED - CWC, SDS

NOT TO SCALE

FOR INFORMATION ONLY  
2011 RECONSTRUCTION

STATE OF ILLINOIS  
DEPARTMENT OF TRANSPORTATION

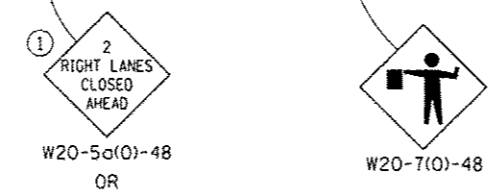
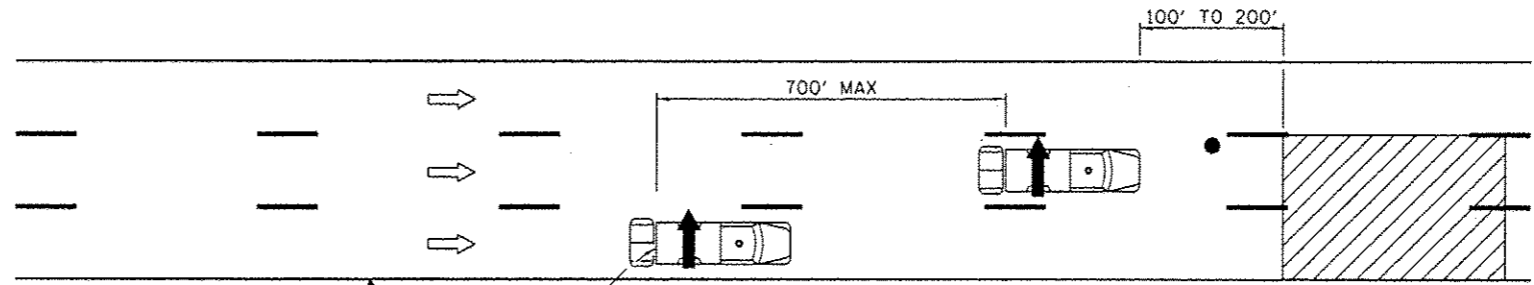
EXISTING STRUCTURE DETAILS

SCALE: N/A SHEET NO. 7 OF 7 SHEETS STA. TO STA.

F.A. RTE.	SECTION	COUNTY	TOTAL SHEETS	SHEET NO.
64	82-5HB-3-P	ST. CLAIR	12	11
CONTRACT NO. 76G33				
FED. ROAD DIST. NO. ILLINOIS FED. AID PROJECT				


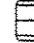
FILE NAME =	USER NAME = harbaughrd	DESIGNED -	REVISED -
et:\pw\work\p\dot\harbaughrd\0336836\076g33-sht-plen.dgn		DRAWN -	REVISED -
		PLOT SCALE = 100.0000' / in.	REVISED -
		PLOT DATE = 3/29/2013	REVISED -





① THIS SIGN SHOULD BE USED WHEN 2 LANES ARE CLOSED

**SYMBOLS**

-  Arrow board
-  Work area
-  Truck with flashing amber light
-  Truck mounted attenuator
-  Flagger with traffic control sign

FILE NAME *	USER NAME * #USER*	DESIGNED -	REVISED -	<b>STATE OF ILLINOIS DEPARTMENT OF TRANSPORTATION</b>	<b>TRAFFIC CONTROL DETAIL SHEET</b>		F.A.I. RTE.	SECTION	COUNTY	TOTAL SHEETS	SHEET NO.	
#FILE#		DRAWN -	REVISED -		SCALE: N/A	SHEET 1 OF 1 SHEETS	STA.	64	82-5H0-3-P	ST. CLAIR	12	12
#MODELNAME#		CHECKED -	REVISED -				TO STA.					
		DATE -	REVISED -									

ILLINOIS FED. AID PROJECT CONTRACT NO. 76G33