

FAU ROUTE	SECTION	COUNTY
	1E-0008(166)	ST. CLAIR
CONTRACT NO. 97500		ILLINOIS
FEDERAL AID PROJECT		

THOUVENOT, WADE & MOERCHEN, INC.
ENGINEERS SURVEYORS PLANNERS



CORPORATE OFFICE
4940 OLD COLLINSVILLE RD.
SWANSEA, ILLINOIS 62226
TEL (618) 624-4488
FAX (618) 624-6688
corp@twm-inc.com

WATERLOO OFFICE
118 EAST THIRD STREET
WATERLOO, ILLINOIS 62298
TEL (618) 939-5050
FAX (618) 939-3938
waterloo@twm-inc.com

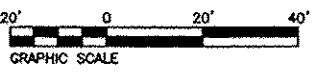
ST. LOUIS OFFICE
1001 CRAIG ROAD, SUITE 260
ST. LOUIS, MISSOURI 63146
TEL (314) 236-5052
FAX (314) 872-2194
stlouis@twm-inc.com

PROFESSIONAL REGISTRATIONS	LICENSE NO.
ILLINOIS PROFESSIONAL DESIGN FIRM	184-001220
PROFESSIONAL ENGINEERING CORP.	61-035370
PROFESSIONAL STRUCTURAL ENGR. CORP.	61-002902
ILLINOIS PROF. LAND SURVEYING CORP.	046-000029
MISSOURI PROFESSIONAL ENGR. CORP.	MC 001528
MISSOURI LAND SURVEYING CORP.	MC 000346

SEAL

Signature: _____
Signature Date: _____
Expiration Date: _____

STATEMENT OF RESPONSIBILITY
I hereby confirm that the document herein to be authorized by my seal is restricted to this sheet, and I hereby disclaim any responsibility for all other drawings, specifications, estimates, reports or other documents or instruments relating to or intended to be utilized for any other part of the architectural, engineering or survey project.

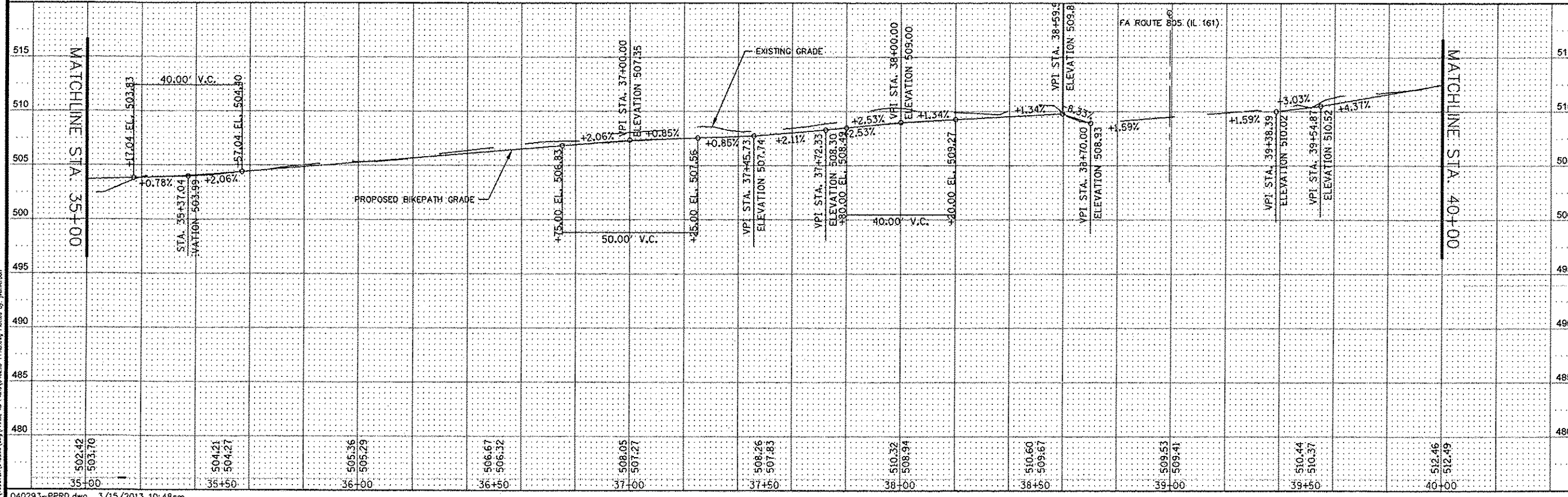
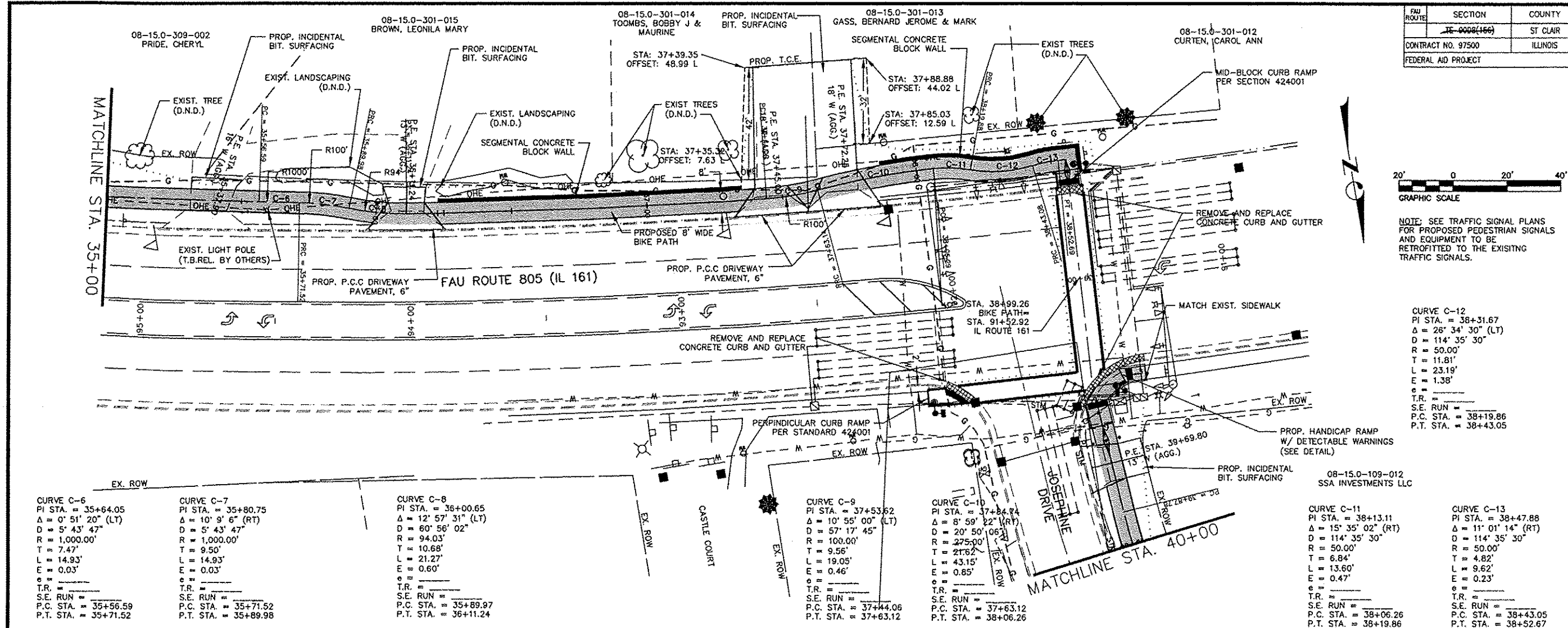


NOTE: SEE TRAFFIC SIGNAL PLANS FOR PROPOSED PEDESTRIAN SIGNALS AND EQUIPMENT TO BE RETROFITTED TO THE EXISTING TRAFFIC SIGNALS.

CURVE C-12
PI STA. = 38+31.67
Δ = 26° 34' 30" (LT)
D = 114' 35' 30"
R = 50.00'
T = 11.81'
L = 23.19'
E = 1.38'
C = _____
T.R. = _____
S.E. RUN = _____
P.C. STA. = 38+19.86
P.T. STA. = 38+43.05

CURVE C-11
PI STA. = 38+13.11
Δ = 15° 35' 02" (RT)
D = 114' 35' 30"
R = 50.00'
T = 6.84'
L = 13.60'
E = 0.47'
C = _____
T.R. = _____
S.E. RUN = _____
P.C. STA. = 38+06.26
P.T. STA. = 38+19.86

CURVE C-13
PI STA. = 38+47.88
Δ = 11° 01' 14" (RT)
D = 114' 35' 30"
R = 50.00'
T = 4.82'
L = 9.62'
E = 0.23'
C = _____
T.R. = _____
S.E. RUN = _____
P.C. STA. = 38+43.05
P.T. STA. = 38+52.67



PLAN AND PROFILE
STA. 35+00 - STA. 40+00

PROJECT: RICHLAND CREEK BIKE TRAIL
PHASE 2B
VILLAGE OF SWANSEA
ST. CLAIR COUNTY, IL

REV	DATE	DESCRIPTION
△		
△		
△		

DRAWN BY: JVV	SHEET: 8
DESIGNED BY: JVV	
CHECKED BY: MJK	
APPROVED BY: JVV	
PROJECT NUMBER: M19100072A	OF 46 SHEETS
ISSUED FOR REVIEW □ ISSUED FOR BIDDING □ ISSUED FOR CONSTRUCTION RECORD DRAWING	