

FBI ROUTE	SECTION	COUNTY
	TE-0008(166)	ST. CLAIR
CONTRACT NO. 97500	ILLINOIS	
FEDERAL AID PROJECT		

THOUVENOT, WADE & MOERCHEN, INC.
ENGINEERS • SURVEYORS • PLANNERS

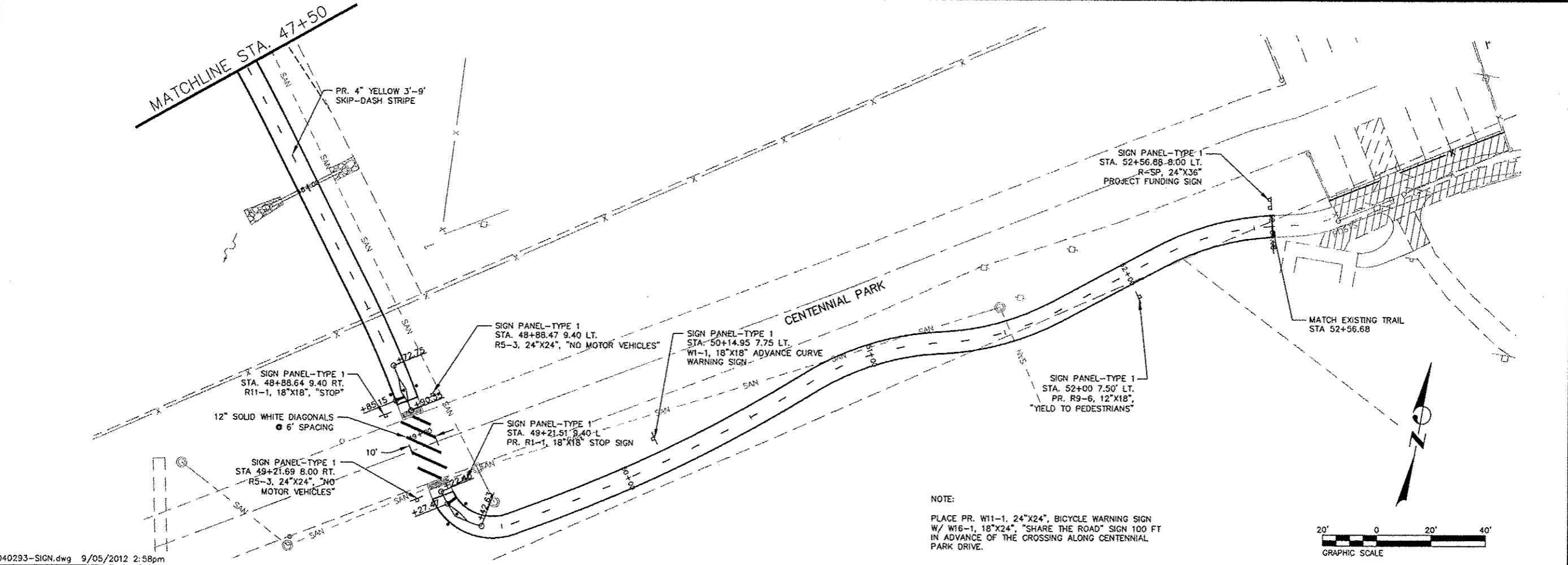


- CORPORATE OFFICE**
4940 OLD COLLINGSVILLE RD.
SWANSEA, ILLINOIS 62226
TEL (618) 624-4488
FAX (618) 624-6688
corp@twm-inc.com
- WATERLOO OFFICE**
113 SOUTH MAIN STREET
WATERLOO, ILLINOIS 62298
TEL (618) 939-5050
FAX (618) 939-3938
waterloo@twm-inc.com
- EDWARDSVILLE OFFICE**
600 COUNTRY CLUB VIEW, SUITE 1
EDWARDSVILLE, ILLINOIS 62025
TEL (618) 656-4040
FAX (618) 656-4343
edwardsville@twm-inc.com
- ST. LOUIS OFFICE**
720 OLIVE ST., SUITE 200 A
ST. LOUIS, MISSOURI 63101
TEL (314) 241-6300
stlouis@twm-inc.com

PROFESSIONAL REGISTRATIONS	LICENSE NO.
ILLINOIS PROFESSIONAL DESIGN FIRM	164-001220
PROFESSIONAL ENGINEERING CORP.	62-035370
PROFESSIONAL STRUCTURAL ENGR. CORP.	81-005202
ILLINOIS PROF. LAND SURVEYING CORP.	048-000029
MISSOURI PROFESSIONAL ENGR. CORP.	MC 001528
MISSOURI LAND SURVEYING CORP.	MC 000346

Signature: _____
Signature Date: _____
Expiration Date: _____

STATEMENT OF RESPONSIBILITY
I hereby confirm that the document herein to be authenticated by my seal is restricted to this sheet, and I hereby disclaim any responsibility for all other drawings, specifications, estimates, reports or other documents or instruments existing to or intended to be utilized for any other part of the architectural, engineering or survey project.



SECTION 10-00032-00-BT
PAVEMENT MARKING AND SIGNAGE PLAN

PROJECT: RICHLAND CREEK BIKE TRAIL PHASE 2B VILLAGE OF SWANSEA ST. CLAIR COUNTY, ILLINOIS

REV.	DATE	DESCRIPTION

DRAWN BY: JVV	SHEET
DESIGNED BY: JVV	17
CHECKED BY: MJK	OF 46 SHEETS
APPROVED BY: JVV	PROJECT DESCRIPTION
PROJECT NUMBER: M19100072A	
ISSUED FOR REVIEW	ISSUED FOR BIDDING
ISSUED FOR CONSTR.	RECORD DRAWING

P:\10072A\100293-SIGN.dwg PHASE 2B File: 10/02/2012 2:58pm Plotted By: jmmorchen