

STATE OF ILLINOIS
DEPARTMENT OF TRANSPORTATION
DIVISION OF HIGHWAYS
PLANS FOR PROPOSED

MAIN STREET BRIDGE
VILLAGE OF ROYALTON
F.A.S. ROUTE 898
SECTION 10-00009-00-BR
PROJECT NO. BROS-0055 (072)
JOB NO. C-99-516-11
CONTRACT NO. 99502

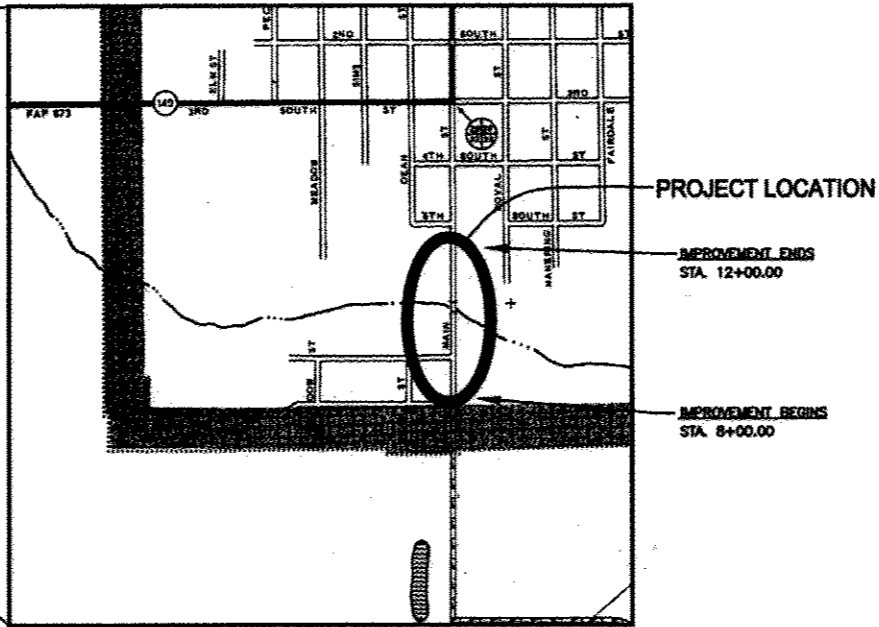
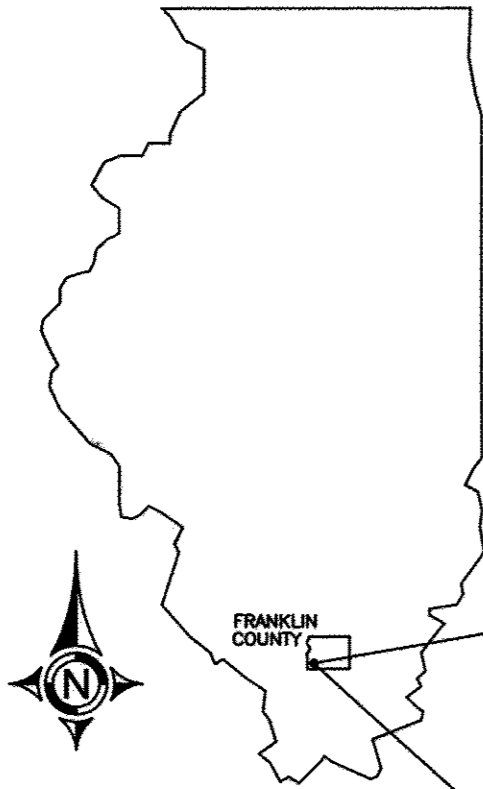
ROUTE	SECTION	COUNTY	TOTAL SHEETS	SHEET NO.
	10-00009-00-BR	FRANKLIN	11	1
VILLAGE OF ROYALTON			MAIN STREET	

CONTRACT NO. 99502

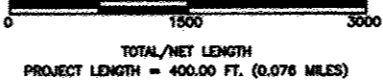
FUNCTIONAL CLASS: Local
ADT (09): 350
DESIGN SPEED: 30 MPH

INDEX OF SHEETS

- 1 COVER SHEET
- 2 SUMMARY OF QUANTITIES & TYPICAL SECTIONS
- 3 GENERAL PLAN AND ELEVATION
- 4-5 DECK BEAM DETAILS
- 6 ABUTMENT DETAILS
- 7 STEEL RAILING DETAILS
- 8 PLAN AND PROFILE
- 9-10 CROSS SECTIONS
- 11 TYPICAL WATERMAIN DETAILS



LOCATION MAP



STANDARDS

- 280001-07 TEMPORARY EROSION CONTROL
- 515001-03 NAME PLATE
- 542301-03 PRECAST REINFORCED CONCRETE FLARED END SECTION
- 701901-02 TRAFFIC CONTROL
- BLR 21-9 TRAFFIC CONTROL

ALL EXISTING UTILITIES AND LOCATIONS TO BE CONFIRMED BY J.U.L.I.E. 800-892-0123

Jim W. Brown
Jim W. Brown as President of Date: March 7, 2013
Illinois Professional Design Firm
Land Survey & Prof. Eng. Corp
Number 184-002518
Expires April 30, 2013



STATE OF ILLINOIS
DEPARTMENT OF TRANSPORTATION

APPROVED March 8, 2013
Charles Brandon
CHARLES BRANDON, VILLAGE PRESIDENT

PASSED MARCH 13, 2013
Dennis W. Hill
DISTRICT 9 ENGINEER OF LOCAL ROADS & STREETS

RELEASING FOR BID
BASED ON LIMITED
REVIEW MARCH 13, 2013
Jeffrey L. Keirn
JEFFREY L. KEIRN, P.E. DWH
DEPUTY DIRECTOR OF HIGHWAYS
REGION FIVE ENGINEER