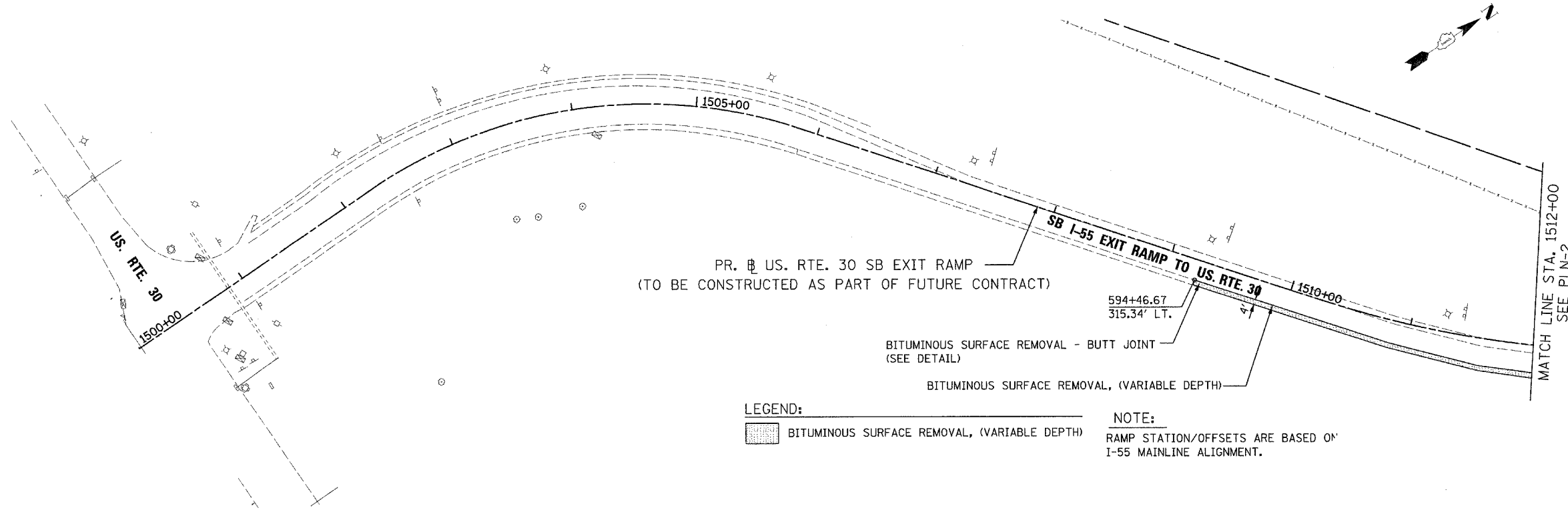
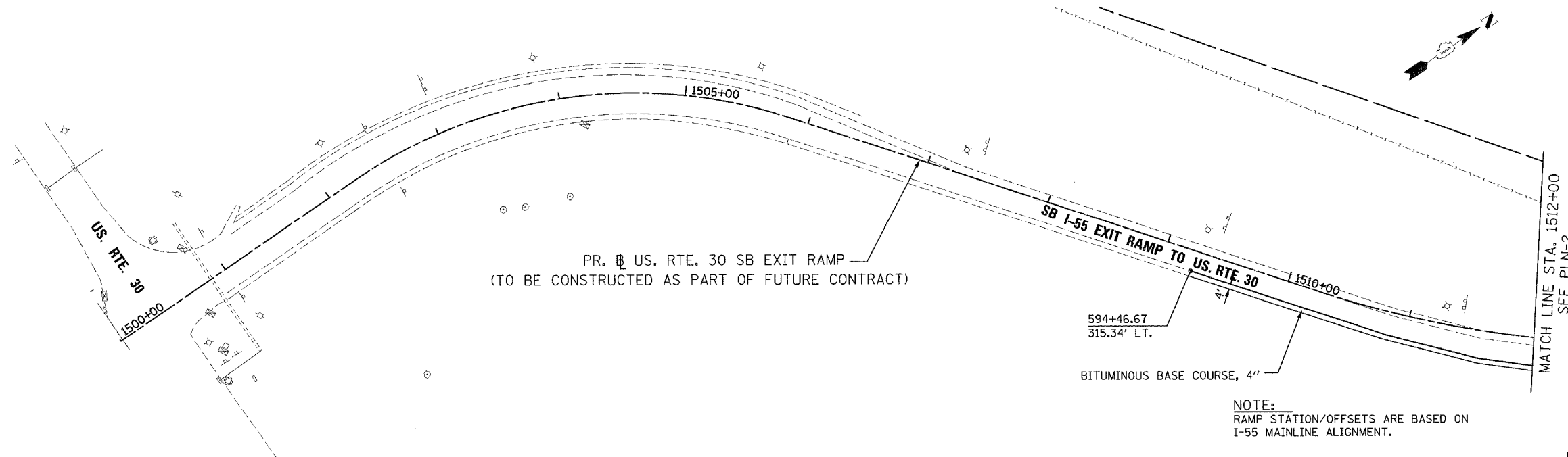


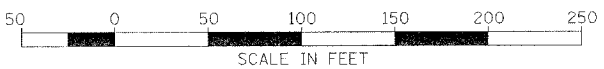
F.A.P. RTE.	SECTION	COUNTY	TOTAL SHEETS	SHEET NO.
55	100 (1&2) I-9	WILL	59	35
STA. 1500+00		TO STA. 1512+00		
FED. ROAD DIST. NO. 1		ILLINOIS	FED. AID PROJECT	
PLN-24 OF 27				



EXISTING CONDITION



PROPOSED CONDITION



REVISIONS	
NAME	DATE

ILLINOIS DEPARTMENT OF TRANSPORTATION  
 FAI ROUTE 55  
 US RTE. 30 TO WEBER ROAD  
 EXISTING AND PROPOSED PLAN

SCALE: 1"=50'  
 DATE: 03-15-06  
 DRAWN BY: ALR  
 CHECKED BY: DM

FINAL