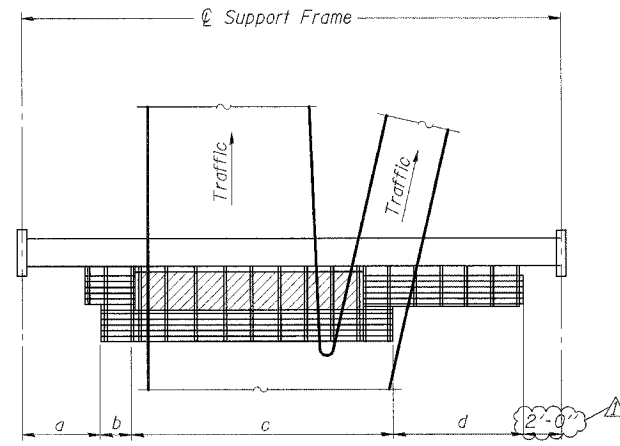
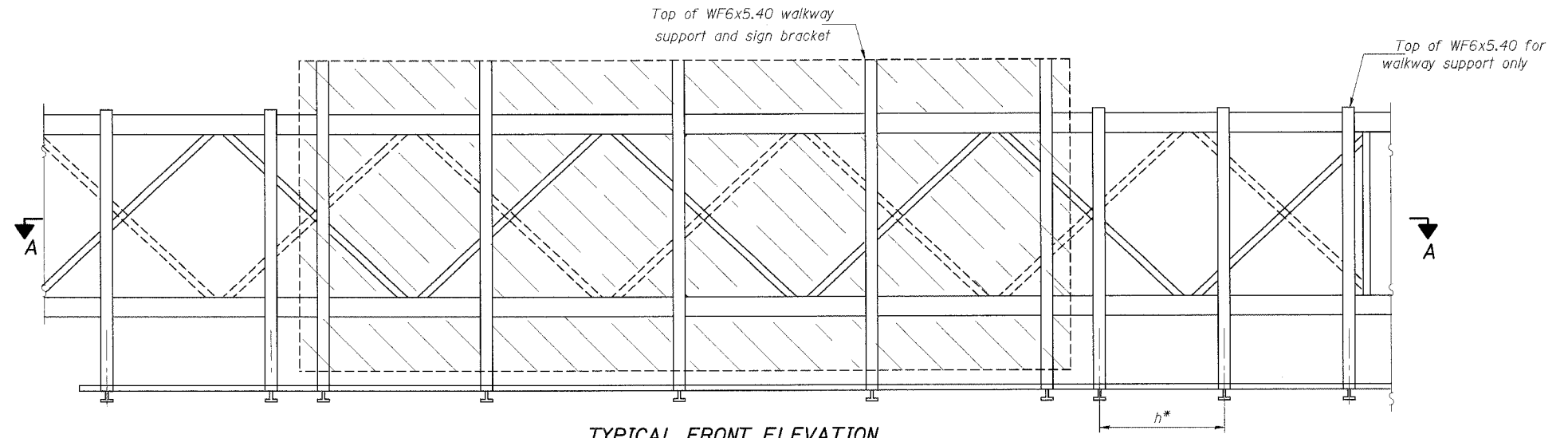


STATE OF ILLINOIS  
DEPARTMENT OF TRANSPORTATION

F.A.I. RTE.	SECTION	COUNTY	TOTAL SHEETS	SHEET NO.
55	2005-085 SG	WILL	28	15
STA.		TO STA.		
FED. ROAD DIST. NO.	ILLINOIS	FED. AID PROJECT		



**PLAN**  
**WALKWAY AND HANDRAIL SKETCH**  
(Road plan beneath truss varies)



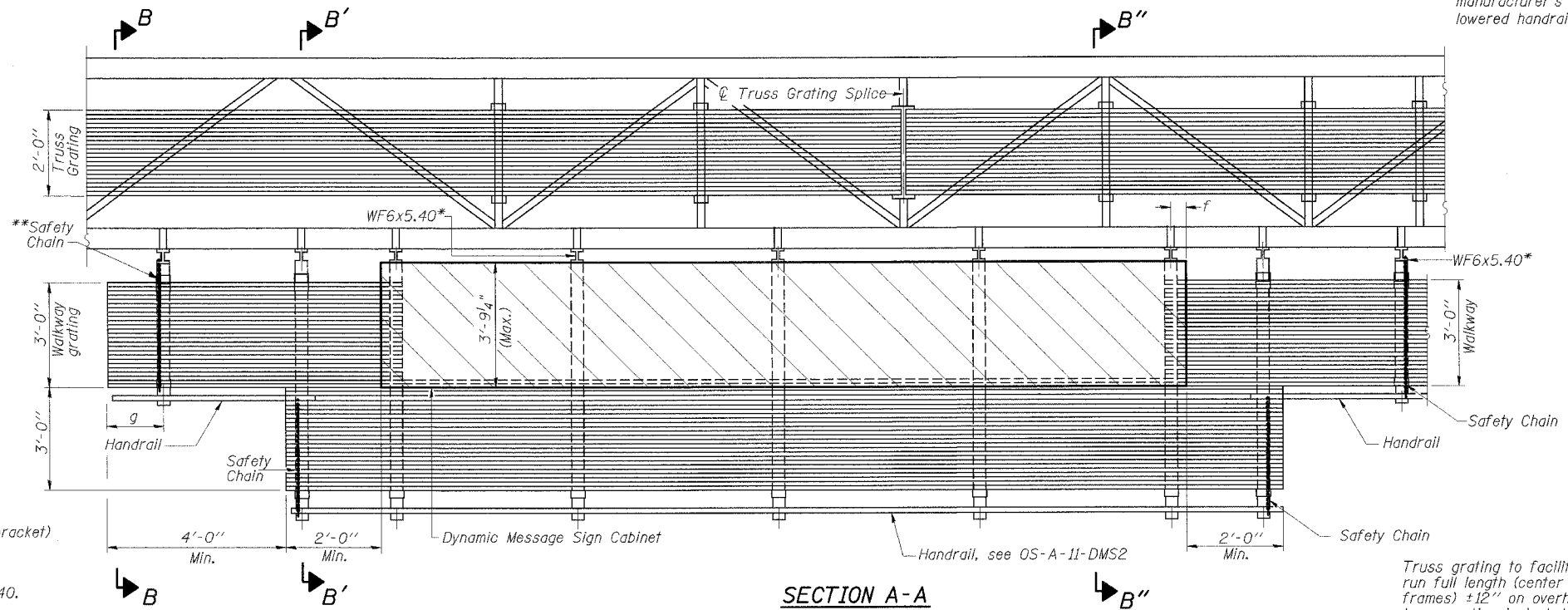
**TYPICAL FRONT ELEVATION**  
With handrail omitted for clarity.  
For Section B-B, see Base Sheet OS-A-10-DMS2  
For Section B'-B', and B''-B'', see Base Sheet OS-A-10a-DMS2

Bracket and grating dimensions are nominal and will vary based on actual DMS cabinet dimensions plus manufacturer's mounting devices, lowered handrail and DMS cabinet.

**BRACKET TABLE**

WF6x5.40 ASTM B308, Alloy 6061-T6		
Sign Width		Number Brackets Required
Greater Than	Less Than or Equal To	
8'-0"	8'-0"	2
14'-0"	14'-0"	3
20'-0"	20'-0"	4
26'-0"	26'-0"	5
32'-0"	32'-0"	6

Walkway and Truss Grating width dimensions are nominal and may vary  $\pm \frac{1}{2}$ " based on available standard widths.



**SECTION A-A**

Truss grating to facilitate inspection shall run full length (center to center of support frames)  $\pm 12$ " on overhead trusses. Cost of truss grating is included in "Overhead Sign Structure"

Handrail and walkway shall span a minimum of three brackets between splices and/or gap joints. Place all sign and walkway brackets as close to panel points as practical. Grating and handrail splices placed as needed.

Notes: \*Space WF6x5.40 brackets for efficiency and within limits shown:

- f = 12" maximum, 4" minimum (End of sign to  $\phi$  of nearest bracket)
- g = 12" maximum, 4" minimum (End of walkway grating to  $\phi$  of nearest support bracket)
- h = 6'-0" maximum ( $\phi$  to  $\phi$  of walkway support brackets, WF6x5.40)
- Maximum DMS weight = 4000LBS
- 3'-9" maximum cabinet depth includes depth of cabinet plus connection to WF6x5.40.

\*\*If walkway bracket at safety chain location is behind sign, add angle to bracket, see Alternate Safety Chain Attachment on Base Sheet OS-A-11-DMS2

For Section B-B and Grating Splice Details see Base Sheet OS-A-10-DMS2.  
For Handrail Splice Details see Base Sheet OS-A-11-DMS2.

DESIGNED	
CHECKED	
DRAWN	
CHECKED	

EXAMINED	19
PASSED	

NUMBER	REVISION	DATE

Structure Number	Station	a	b	c	d	Walkway Grating and Handrail Lengths
IS0991055R247.37	59+00	6'-8"	2'-6"	28'-8"	26'-2"	61'-4"
IS0991055R255.26	469+00	10'-5"	2'-6"	28'-8"	44'-5"	79'-7"

SHT. S-8 OF 15

REVISIONS	
NAME	DATE
MJK	5/05/06

ILLINOIS DEPARTMENT OF TRANSPORTATION  
FAI ROUTE 55 (I-80 TO U.S. 30)  
DYNAMIC MESSAGING SIGNS

**OVERHEAD SIGN STRUCTURE  
ALTERNATE ALUMINUM WALKWAY  
DETAILS FOR DMS**

SCALE: DRAWN BY MRK  
DATE 03/24/06 CHECKED BY MJK

**TENG**  
TENG & ASSOCIATES, INC.  
ENGINEERS/ARCHITECTS/PLANNERS  
CHICAGO, ILLINOIS

OS-A-9-DMS2 1/7/2005

PLOT DATE = #DATE#  
 FILE NAME = #FILE#  
 PLOT SCALE = #SCALE#  
 USER NAME = #USER#  
 S:\DOCUMENT\02361601\STRUCT\00N\56040071.SHT  
 KJENSTWJ  
 5/25/2006 10:05:54