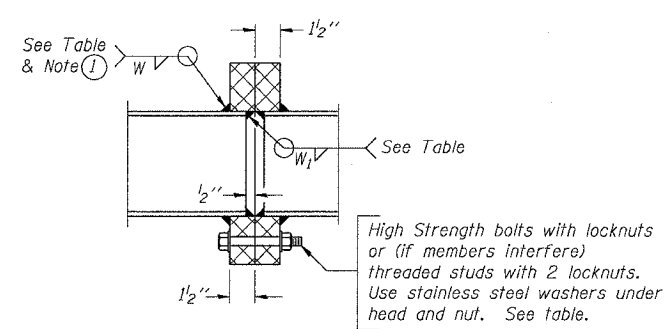


F.A.I. RTE.	SECTION	COUNTY	TOTAL SHEETS	SHEET NO.
55	2005-085 SG	WILL.	28	11
STA.		TO STA.		
FED. ROAD DIST. NO.		ILLINOIS	FED. AID PROJECT	

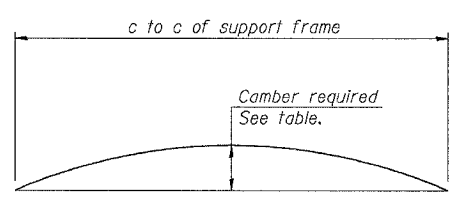
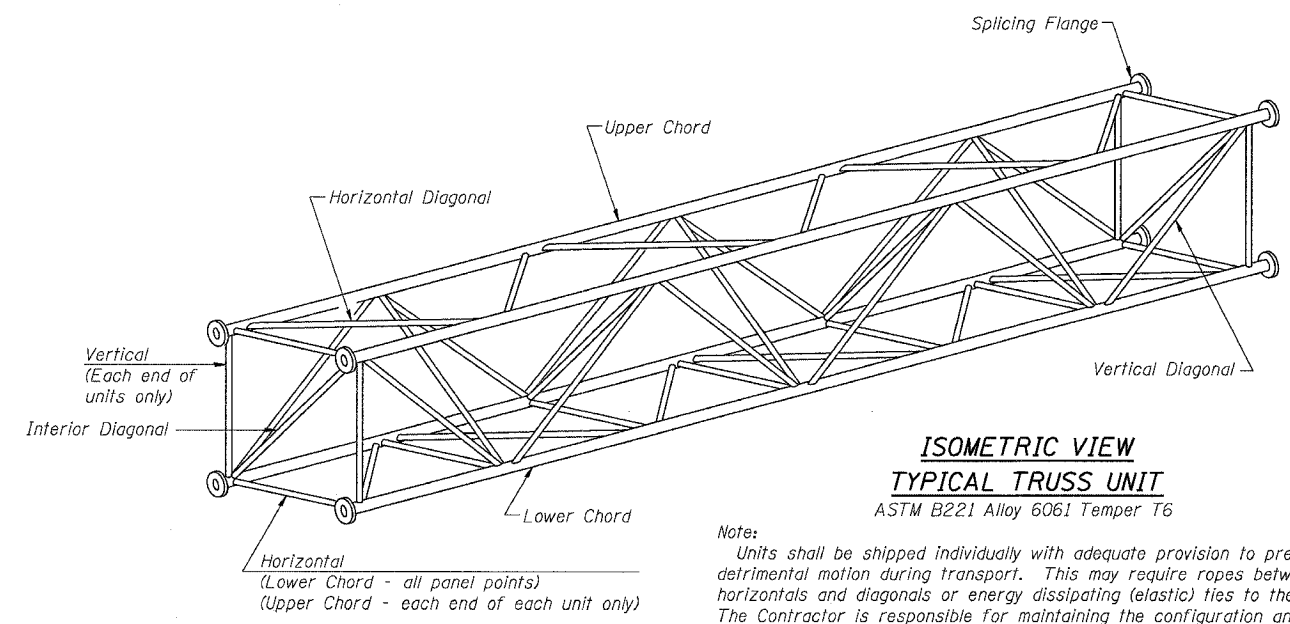
TRUSS UNIT TABLE

Structure Number	Station	Design Truss Type	Exterior Units (2)			Interior Unit				Upper & Lower Chord		Verticals; Horizontals; Vertical, Horizontal, and Interior Diagonals		Camber at Midspan	Splicing Flange					
			No. Panels per Unit	Unit Lgth.(L _e)	Panel Lgth.(P)	No. Req'd.	No. Panels per Unit	Unit Lgth.(L _i)	Panel Lgth.(P)	O.D.	Wall	O.D.	Wall		Bolts		Weld Sizes		A	B
															No./Splice	Dia.	W	W _i		
IS0991055R247.37	59+00.00	III-A	6	33'-10 1/2"	5'-4"	—	—	—	—	7"	5/16"	3 1/4"	5/16"	1 3/4"	6	1"	7/16"	5/16"	11 1/2"	15"
IS0991055R255.26	469+00.00	III-A	5	28'-4"	5'-3 1/2"	1	6	33'-0"	5'-3 1/2"	7"	5/16"	3 1/4"	5/16"	1 3/4"	6	1"	7/16"	5/16"	11 1/2"	15"

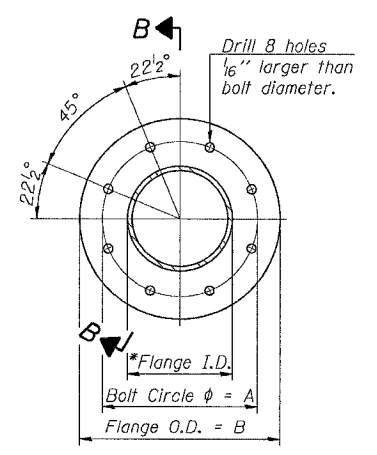
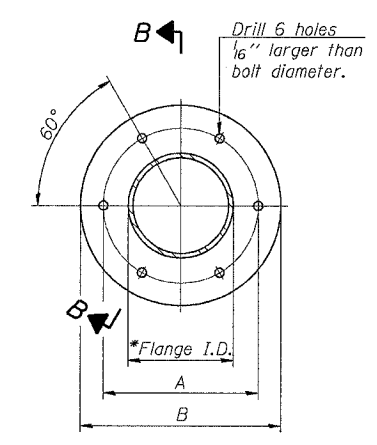
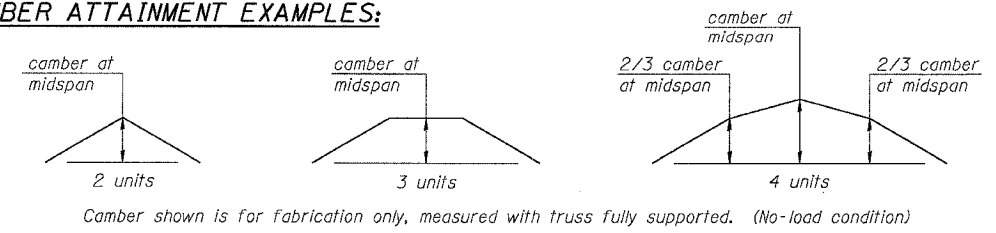


SECTION B-B

(1) Splicing Flanges shall be attached to each truss unit with the truss shop assembled to camber shown. Truss units shall be in proper alignment and flange surfaces shall be shop bolted into full contact before welding. Sufficient external welds or tacks shall be made to secure flanges until remaining welds are made after disassembly. Adjacent flanges shall be "match marked" to insure proper field assembly.



CAMBER ATTAINMENT EXAMPLES:



SPLICING FLANGES

ASTM B221, Alloy 6061-T6 or ASTM B209, Alloy 6061-T651
*To fit O.D. of Chord with maximum gap of 1/16".

NUMBER	REVISION	DATE

SHT. 5-4 OF 15

REVISIONS	
NAME	DATE

ILLINOIS DEPARTMENT OF TRANSPORTATION
FAI ROUTE 55 (I-80 TO U.S. 30)
DYNAMIC MESSAGING SIGNS

**OVERHEAD SIGN STRUCTURES
ALUMINUM TRUSS DETAILS - II
TRUSS TYPES I-A, II-A AND III-A**

SCALE: DRAWN BY MRK
DATE 03/27/06 CHECKED BY MJK

TENG TENG & ASSOCIATES, INC.
ENGINEERS/ARCHITECTS/PLANNERS
CHICAGO, ILLINOIS

PLOT DATE = #DATE#
 FILE NAME = #FILE#
 PLOT SCALE = #SCALE#
 USER NAME = #USER#
 S:\DOCUMENT\22361591\STRUC\T\GNS\589414613.DWT
 KRNWATM
 3-27-2006, 1:48:35